

STONERIDGE PLACE

7901 STONERIDGE DRIVE, PLEASANTON, CA

7901 STONERIDGE.COM

EMBARCADERO
CAPITAL PARTNERS



Kidder
Mathews

Stoneridge Place is a five-story, Class A office project located at the I-580 and I-680 interchange.

 <p>PROCURRING AGENT FEE PAID WITHIN 48 HRS OF LEASE SIGNING*</p>	 <p>SHORT DISTANCE WALK FROM THE WEST DUBLIN/ PLEASANTON BART</p>	 <p>WALKING DISTANCE TO STONERIDGE SHOPPING CENTER</p>	 <p>EV CHARGING STATIONS</p>
<p>GYM/SHOWERS</p>  <p>LOCKERS AND TOWEL SERVICE</p>	 <p>BUILDING COMMON CONFERENCE ROOM</p>	 <p>ABOVE STANDARD SURFACE PARKING</p>	 <p>24 HOUR AVANTI MARKET ON-SITE</p>

* Subject to Landlord receiving Tenant Rep Commission Invoice, Landlord receipt of any Tenant required funds per the Lease Agreement and subject to modification in the event of alternate negotiated Lease and/or commission payment terms.

For leasing information contact

LISTING BROKERS

IAN THOMAS

Kidder Mathews
925.905.1105 | ian.thomas@kidder.com
LIC N° 01279455

JASON CHANDLER

Kidder Mathews
925.905.1103 | jason.chandler@kidder.com
LIC N° 01394441

OWNER'S REPRESENTATIVE

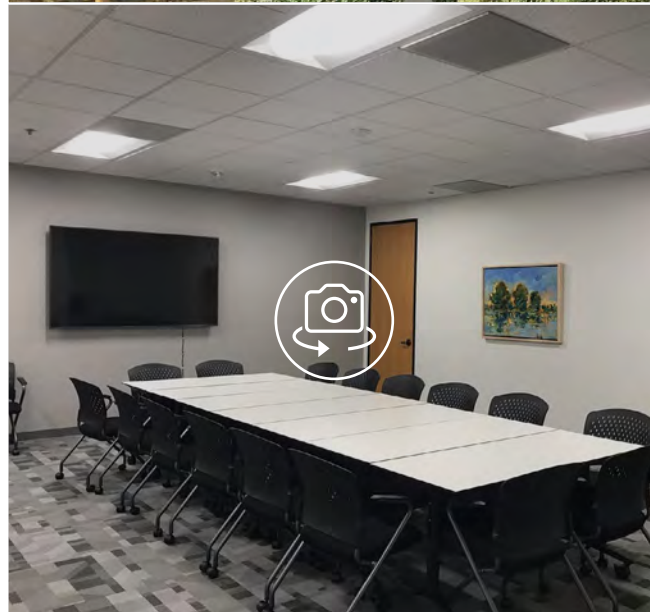
ANDREW BROWN

Embarcadero Capital Partners
650.292.4100 | abrown@ecp-llc.com

KIDDER.COM
7901STONERIDGE.COM

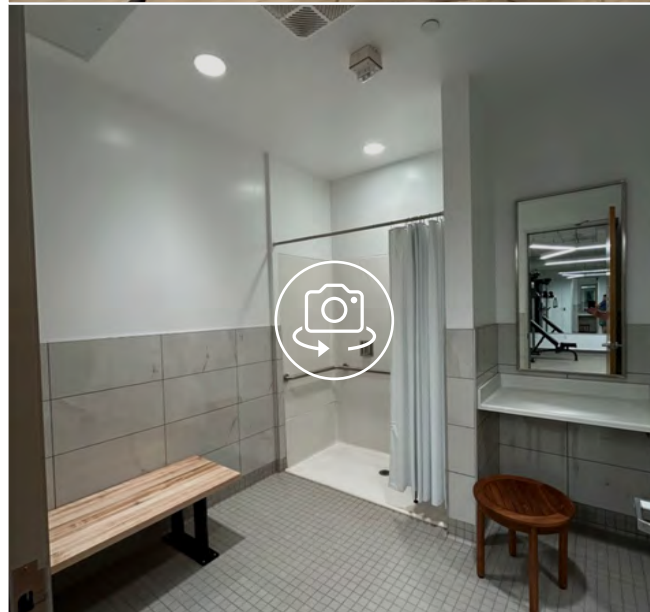
BUILDING AMENITIES

- Five-story, Class “A” office building comprising ±174,503 RSF
- Class A lobby and common area.
- Efficient, flexible floor plates.
- Generous glass-lines, providing abundant natural light
- On-site property management, day porter and engineering team
- Abundant surface parking
- EV charging stations.
- Free common conference room
- Stoneridge Place has earned the ENERGY STAR and is verified to perform in the top 25 percent of buildings nationwide!



BUILDING AMENITIES CONT.

- Avanti Market is an unattended retail self-service with pre-packaged fresh foods and contactless, no touch transactions
- The onsite fitness center features a Peloton bike, treadmill, stair machine, and weight machine
- The fitness center includes two private showers, lockers and towel service.





For leasing information contact

LISTING BROKERS

IAN THOMAS

Kidder Mathews
925.905.1105 | ian.thomas@kidder.com
LIC N° 01279455

JASON CHANDLER

Kidder Mathews
925.905.1103 | jason.chandler@kidder.com
LIC N° 01394441

OWNER'S REPRESENTATIVE

ANDREW BROWN

Embarcadero Capital Partners
650.292.4100 | abrown@ecp-llc.com

KIDDER.COM
7901STONERIDGE.COM

This information supplied herein is from sources we deem reliable. It is provided without any representation, warranty, or guarantee, expressed or implied as to its accuracy. Prospective Buyer or Tenant should conduct an independent investigation and verification of all matters deemed to be material, including, but not limited to, statements of income and expenses. Consult your attorney, accountant, or other professional advisor.

EMBARCADERO
CAPITAL PARTNERS

km Kidder
Mathews



BUILDING LOCATION

- Prime location in Tri-Valley, at the intersection of Stoneridge Drive and Foothill Road.
- Within walking distance to the West Dublin/Pleasanton BART station.
- Proximate to Stoneridge Mall - a regional mall, home to more than 165 retail, restaurant, and entertainment options.

For leasing information contact

LISTING BROKERS

IAN THOMAS
Kidder Mathews
925.905.1105 | ian.thomas@kidder.com
LIC N° 01279455

JASON CHANDLER
Kidder Mathews
925.905.1103 | jason.chandler@kidder.com
LIC N° 01394441

OWNER'S REPRESENTATIVE

ANDREW BROWN
Embarcadero Capital Partners
650.292.4100 | abrown@ecp-llc.com

KIDDER.COM
7901STONERIDGE.COM

1. STONERIDGE MALL

- Macy's
- DMV
- Apple
- PF Chang's
- Cheesecake Factory
- California Pizza Kitchen

2. PLEASANTON SQUARE

- Bev Mo
- The Home Depot
- In-N-Out Burger
- Chick-fil-a
- Taco Bell
- Starbucks

3. GATEWAY SQUARE

- SSAM K-BBQ & BAR
- Round Table Pizza
- Chili's
- Ume Sushi
- Cheese Steak Shop

4. HACIENDA CROSSINGS

- Regal Cinema IMAX
- Barnes & Noble
- Market Tavern
- TJ Maxx
- Starbucks
- Pearl Bay Manor
- Lazy Dog
- Best Buy
- Dish n Dash
- Five Below

5. METRO 580

- Walmart
- L & L Hawaiian BBQ
- Sally Beauty
- Denica's
- McDonald's

6. HACIENDA PLAZA

- Hacienda Cleaners
- Sweet & Savory

7. CROSSROADS

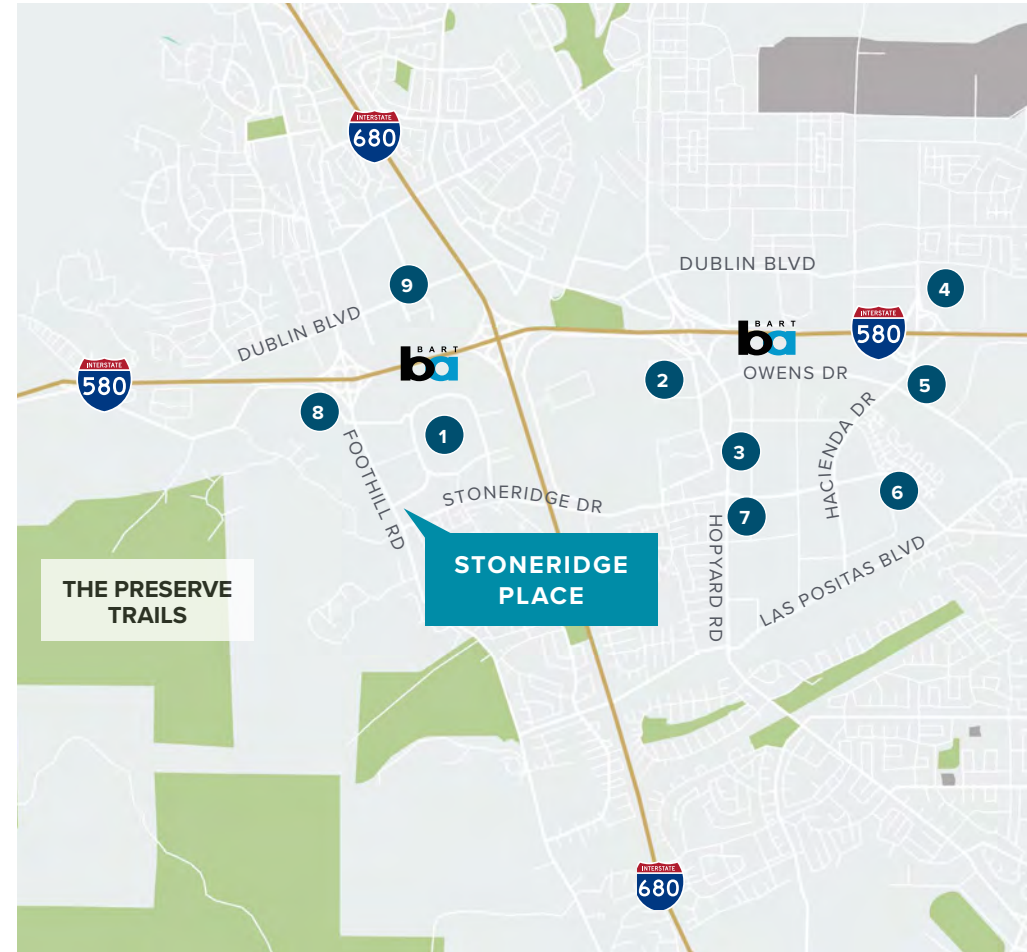
- Starbucks
- Jamba Juice
- Subway
- Chick-fil-a
- Carl's Jr.
- Wells Fargo
- Chase

8. HOTELS

- Pleasanton Marriott
- Residence Inn
- Sheraton Pleasanton
- Holiday Inn

9. DUBLIN BLVD

- Dublin Bowl
- DSW
- Ross Dress For Less
- Marshall
- Target
- Sprouts



For leasing information contact

LISTING BROKERS

IAN THOMAS

Kidder Mathews
925.905.1105 | ian.thomas@kidder.com
LIC N° 01279455

JASON CHANDLER

Kidder Mathews
925.905.1103 | jason.chandler@kidder.com
LIC N° 01394441

OWNER'S REPRESENTATIVE

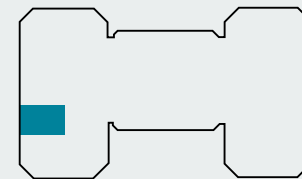
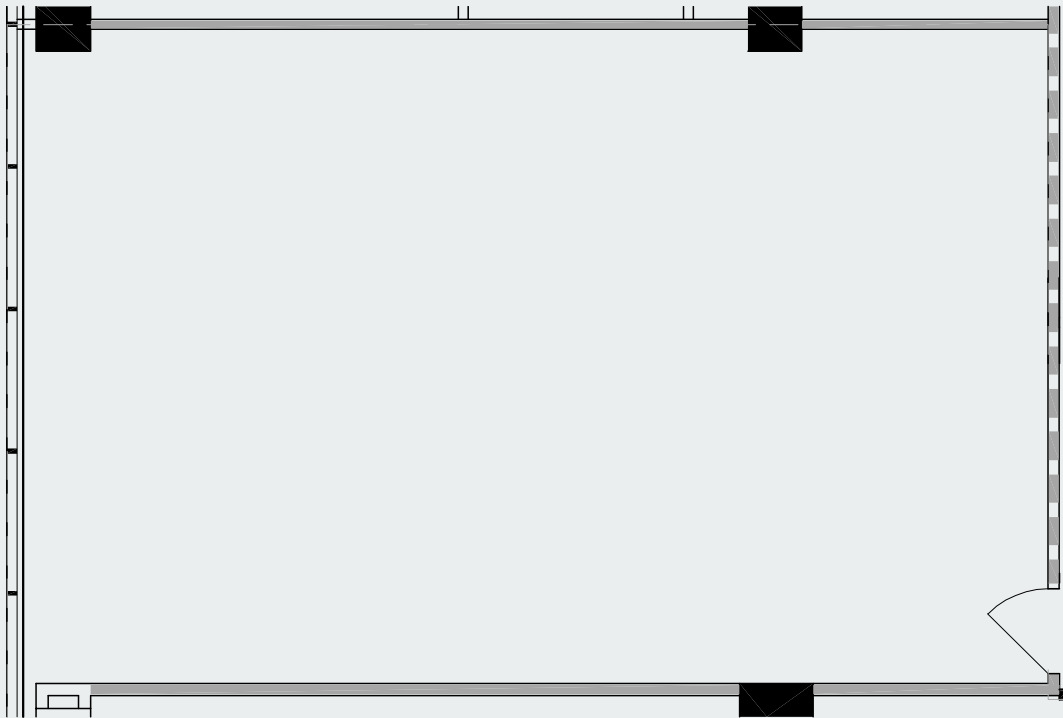
ANDREW BROWN

Embarcadero Capital Partners
650.292.4100 | abrown@ecp-llc.com

KIDDER.COM
7901STONERIDGE.COM

AVAILABLE SUITES

Suites	SF	Available	Comments
224	±1,046	Now	Premium small suite with efficient open plan is "TI Ready".
226	±1,062	Now	"Market Ready", spec suite features reception, three (3) private offices, conference room and kitchenette.
404	±1,812	Now	Suite features fourth floor eastern orientation, three (3) private offices and conference room.
223	±2,171	Now	Suite features abundant corner glass-line and an open floor plan.
330	±2,305	Now	'Spec' suite features northern views, three (3) private offices, conference room and open breakroom.
211	±2,307	Now	Efficient office featuring reception, seven (7) private offices, kitchen, and copy area.
340	±5,097	Now	Premium 'spec' suite features double glass-door entry, polished concrete at reception, large board room, ten (10) private offices, bullpen and open kitchen.
410	±5,597	Now	Spec Suite features double door entry off 4th floor elevator lobby, polished concrete and open ceiling at reception, six (6) private offices, conference room, bullpen and open kitchen. 
500	±7,036	Now	Fifth floor suite features glass double-door entry off elevator lobby, open ceilings and polished concrete at reception, eight (8) private offices, two (2) conference rooms, kitchen, and an open bullpen with glass line.
330/340	±7,402	Now	Suite features 3 sides of glass and northern views, thirteen (13) private offices, two (2) conference rooms, large kitchen and storage.

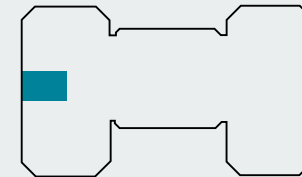
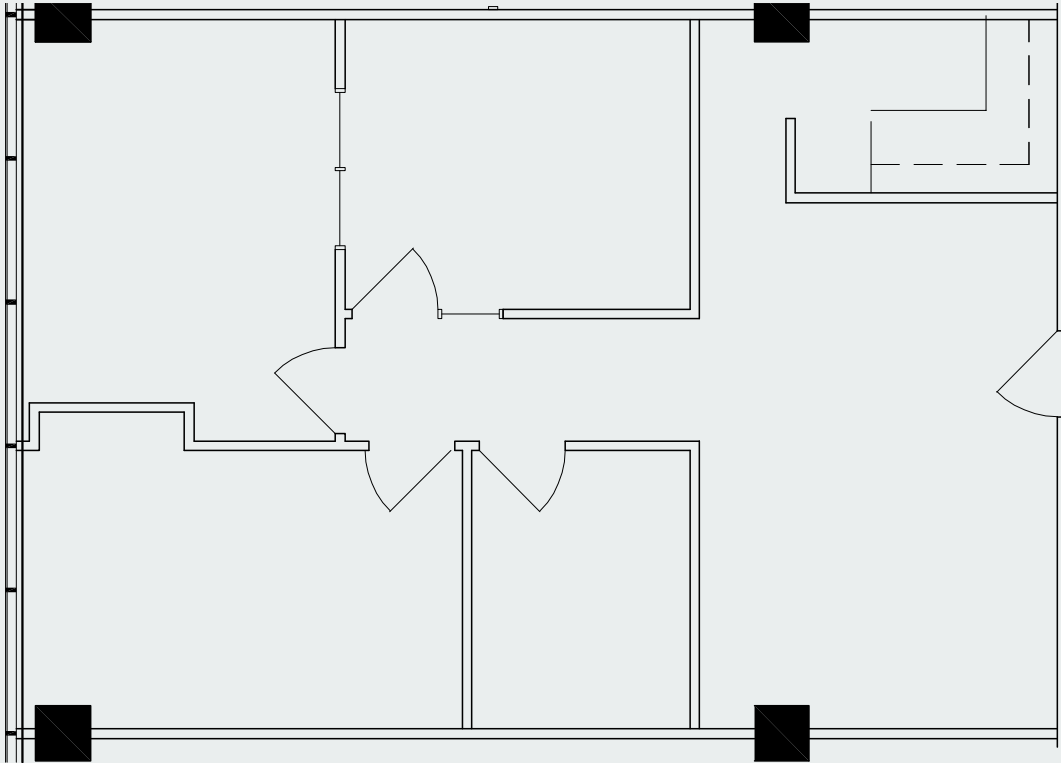


SUITE 224

**SECOND
FLOOR**

**±1,046
SQUARE FEET**

**NOW
AVAILABLE**

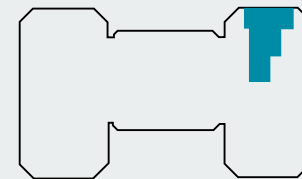
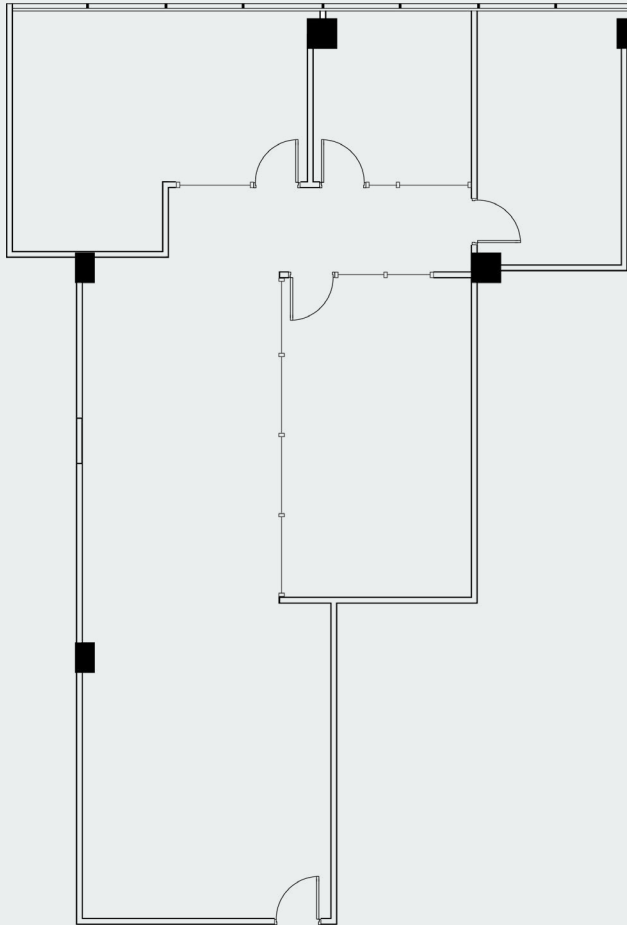


SUITE 226

**SECOND
FLOOR**

**±1,062
SQUARE FEET**

**NOW
AVAILABLE**

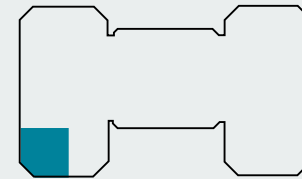
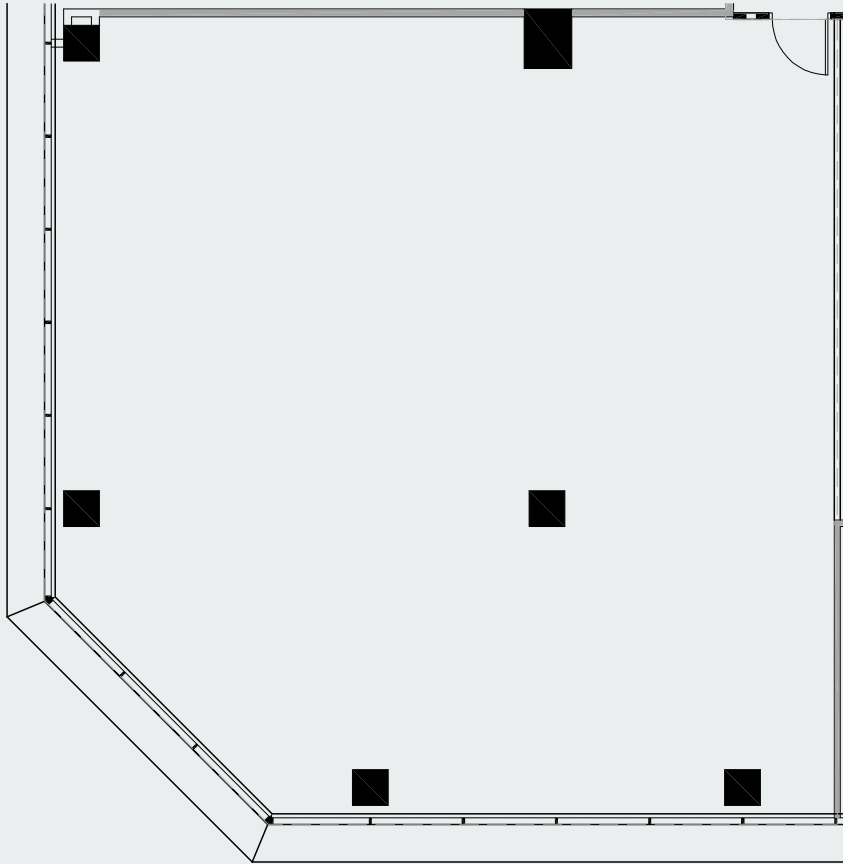


SUITE 404

**FOURTH
FLOOR**

**±1,812
SQUARE FEET**

**NOW
AVAILABLE**

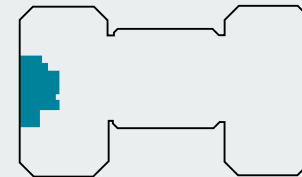
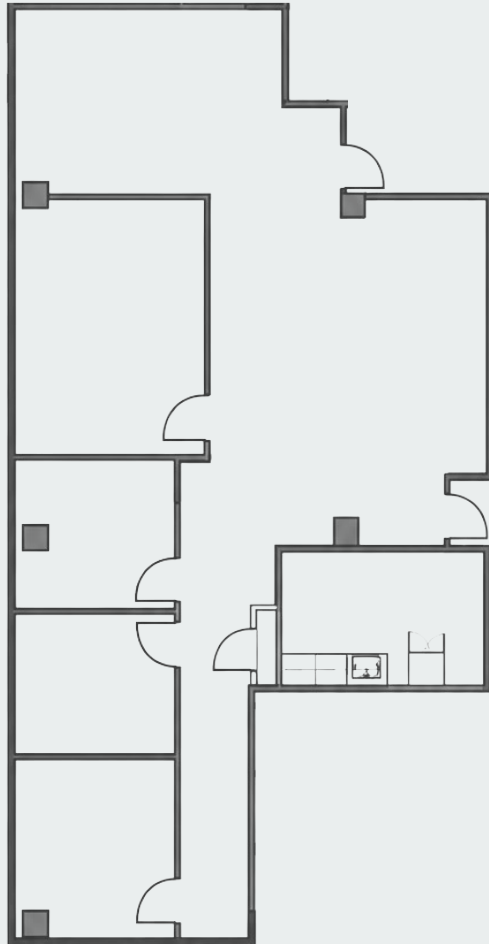


SUITE 223

**SECOND
FLOOR**

**±2,171
SQUARE FEET**

**NOW
AVAILABLE**

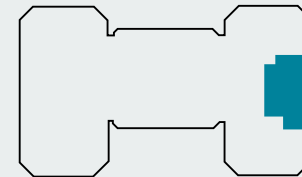
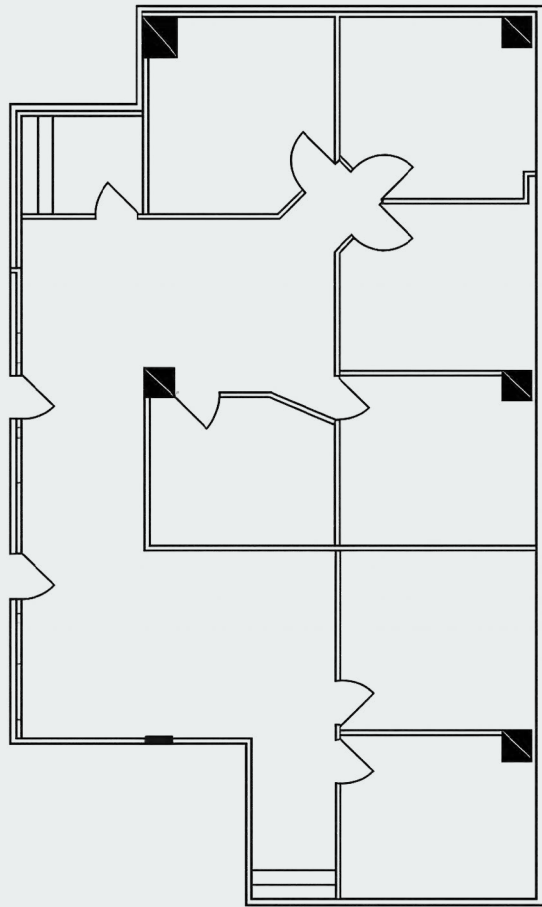


SUITE 330

THIRD
FLOOR

±2,305
SQUARE FEET

NOW
AVAILABLE

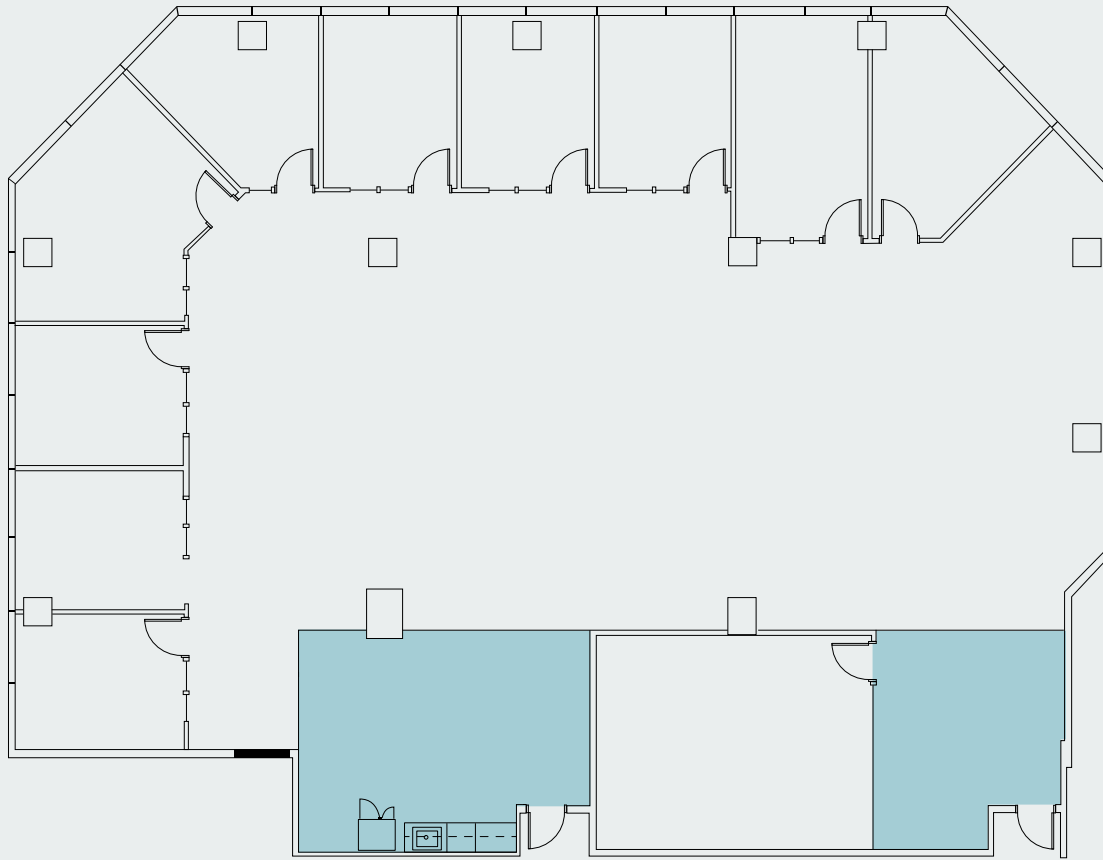


SUITE 211

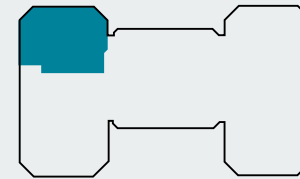
SECOND
FLOOR

±2,307
SQUARE FEET

NOW
AVAILABLE



■ Polished Concrete



SUITE 340

THIRD
FLOOR

±5,097
SQUARE FEET

NOW
AVAILABLE



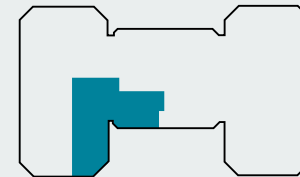
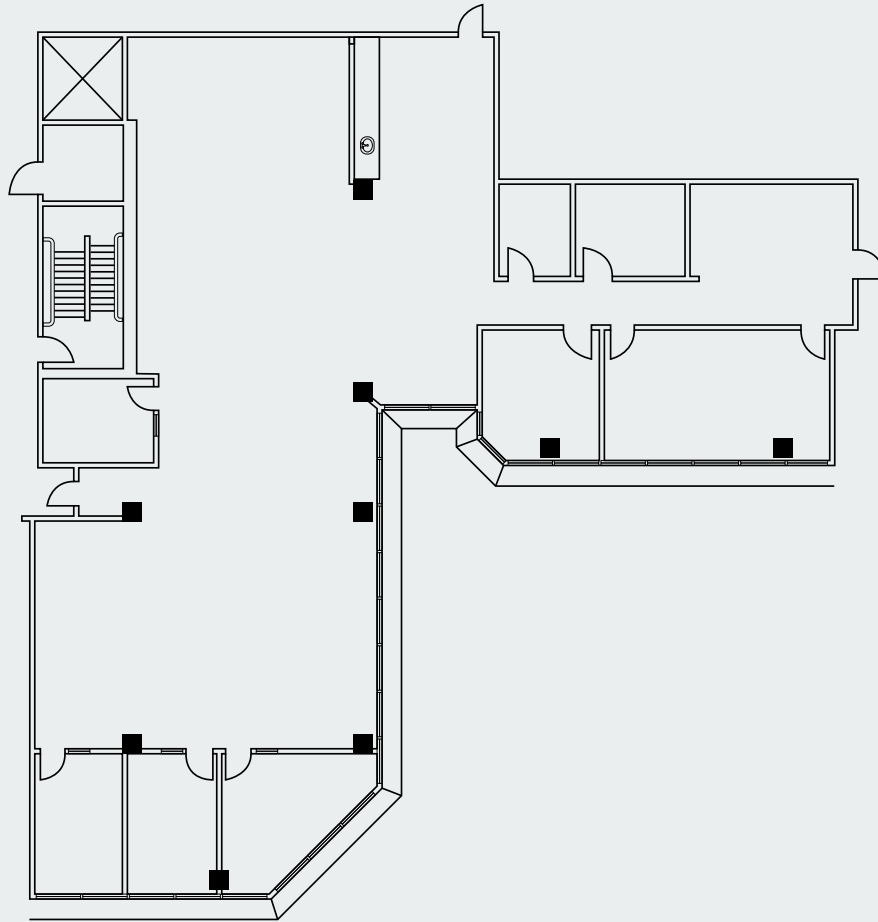
SUITE 340

**THIRD
FLOOR**

**±5,097
SQUARE FEET**

**NOW
AVAILABLE**



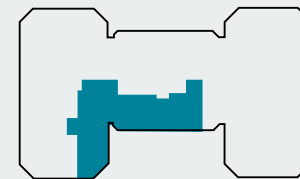
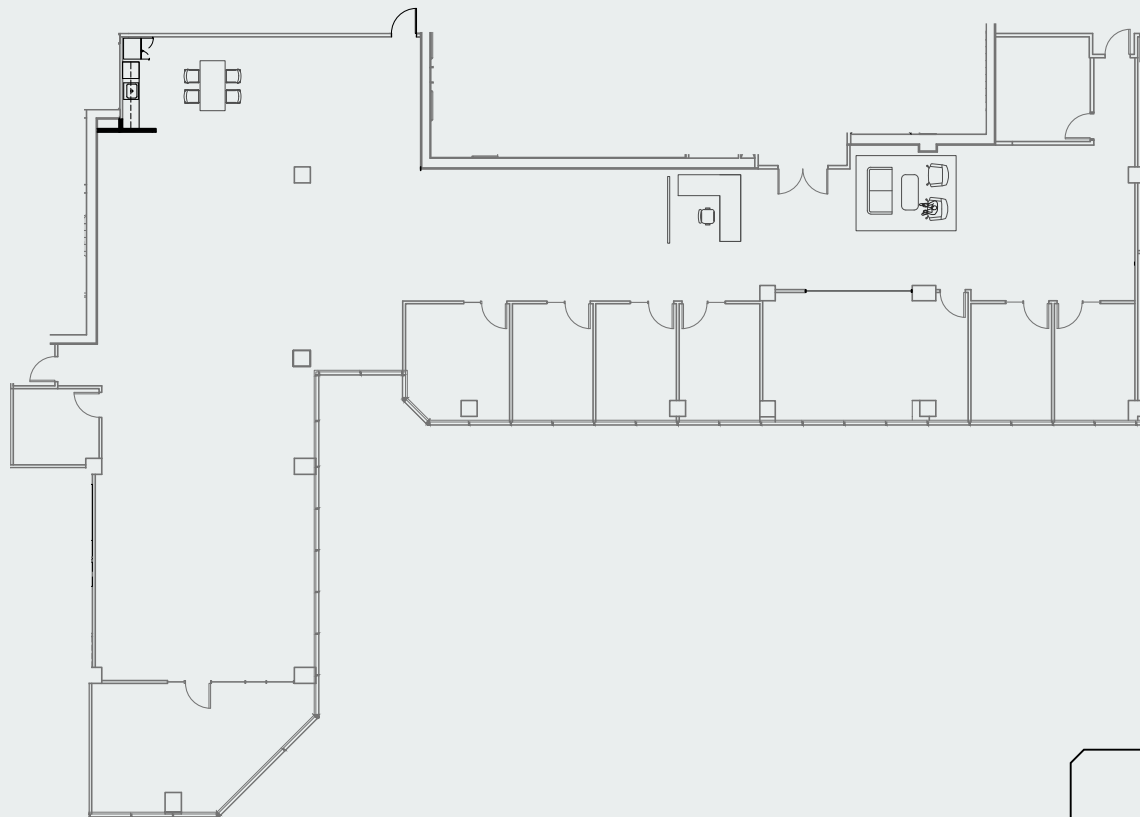


SUITE 410

**FOURTH
FLOOR**

**±5,540
SQUARE FEET**

**NOW
AVAILABLE**

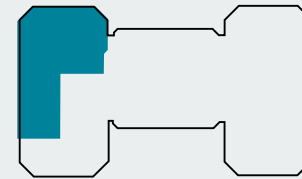
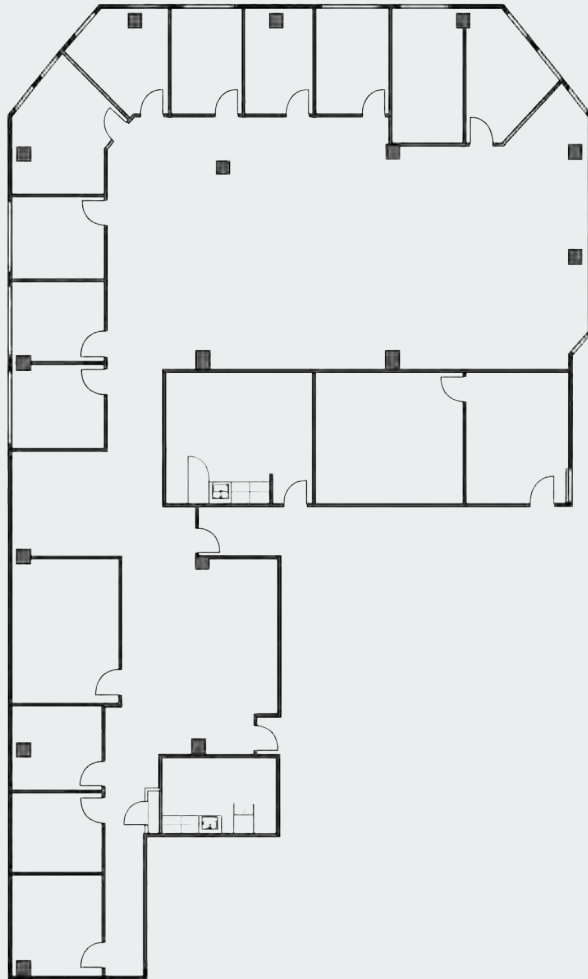


SUITE 500

**FIFTH
FLOOR**

**±7,036
SQUARE FEET**

**NOW
AVAILABLE**



SUITE 330/340

**THIRD
FLOOR**

**±7,402
SQUARE FEET**

**NOW
AVAILABLE**



STONERIDGE PLACE

7901 STONERIDGE DRIVE
PLEASANTON, CA

7901STONERIDGE.COM

For leasing information contact

LISTING BROKERS

IAN THOMAS
Kidder Mathews
925.905.1105 | ian.thomas@kidder.com
LIC N° 01279455

JASON CHANDLER
Kidder Mathews
925.905.1103 | jason.chandler@kidder.com
LIC N° 01394441

OWNER'S REPRESENTATIVE

ANDREW BROWN
Embarcadero Capital Partners
650.292.4100 | abrown@ecp-llc.com

[KIDDER.COM](https://www.kidder.com)

This information supplied herein is from sources we deem reliable. It is provided without any representation, warranty, or guarantee, expressed or implied as to its accuracy. Prospective Buyer or Tenant should conduct an independent investigation and verification of all matters deemed to be material, including, but not limited to, statements of income and expenses. Consult your attorney, accountant, or other professional advisor.

EMBARCADERO
CAPITAL PARTNERS

 **Kidder
Mathews**