

# 2121

AVENUE OF THE STARS

## 48K SF CONTIGUOUS OPPORTUNITY

WITH INTERCONNECTING STAIRWELL

CENTURY CITY



# WORKSPACE OPPORTUNITY

47,672 TOTAL SF

## Office

### 18TH FLOOR

OFFICE 23,836 SQ. FT.

### 19TH FLOOR

OFFICE 23,836 SQ. FT.

**SLAB TO SLAB:**  
12' 6"

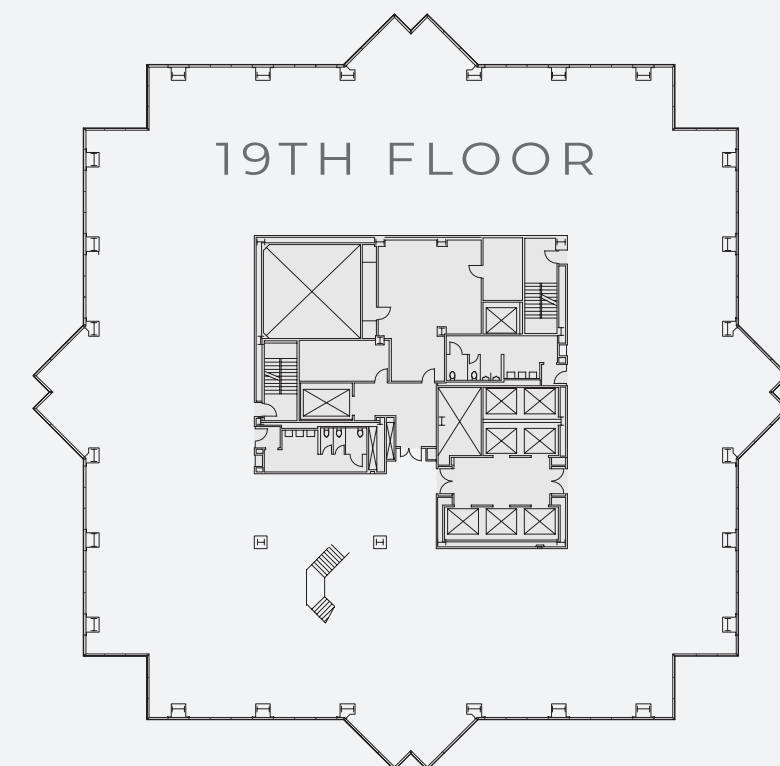
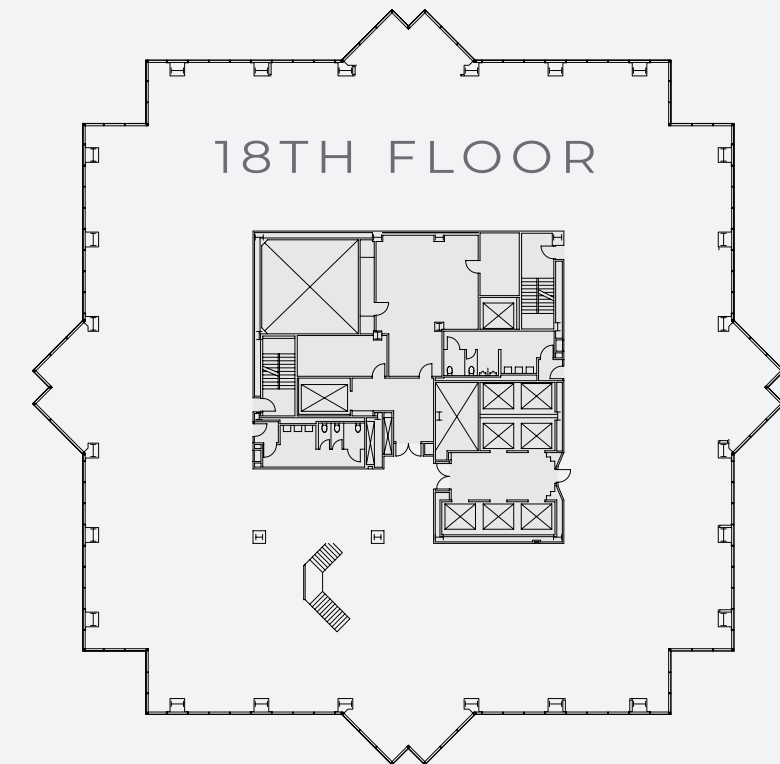
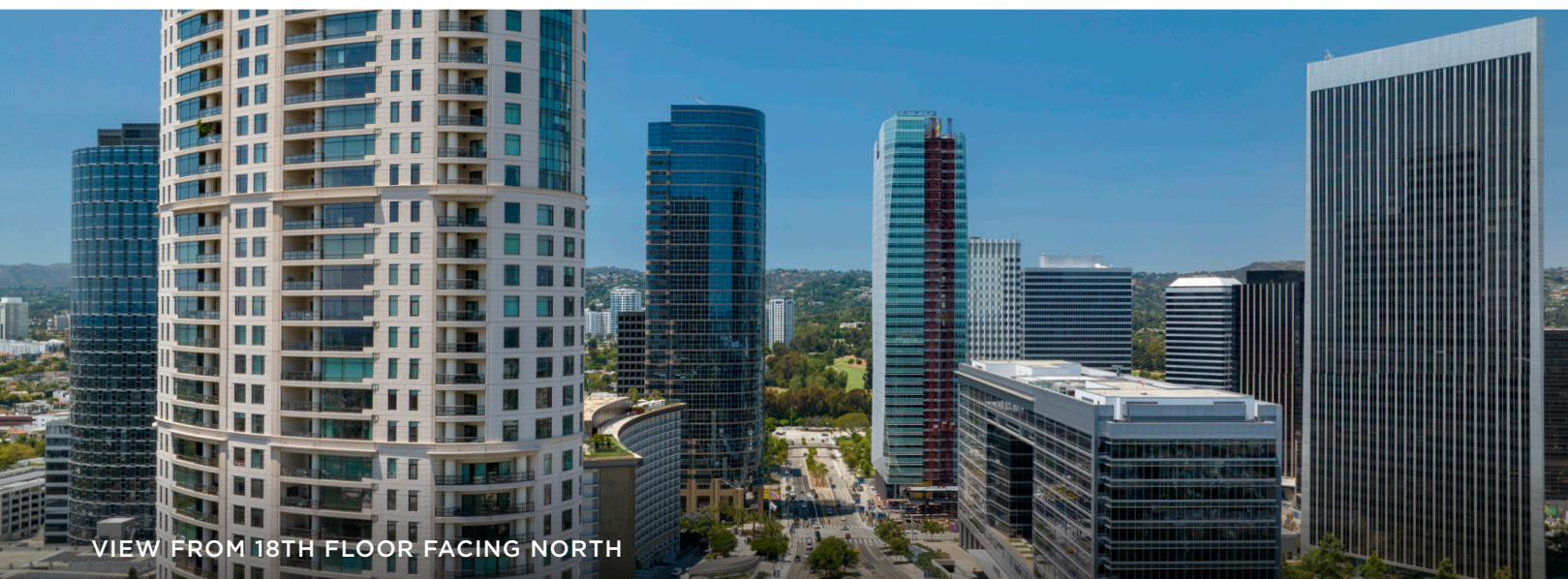
**EV CHARGING:**  
24 Stations

**WORKSPACE OPPORTUNITY:**

- Monument signage available
- Panoramic views
- Interconnecting stairwell

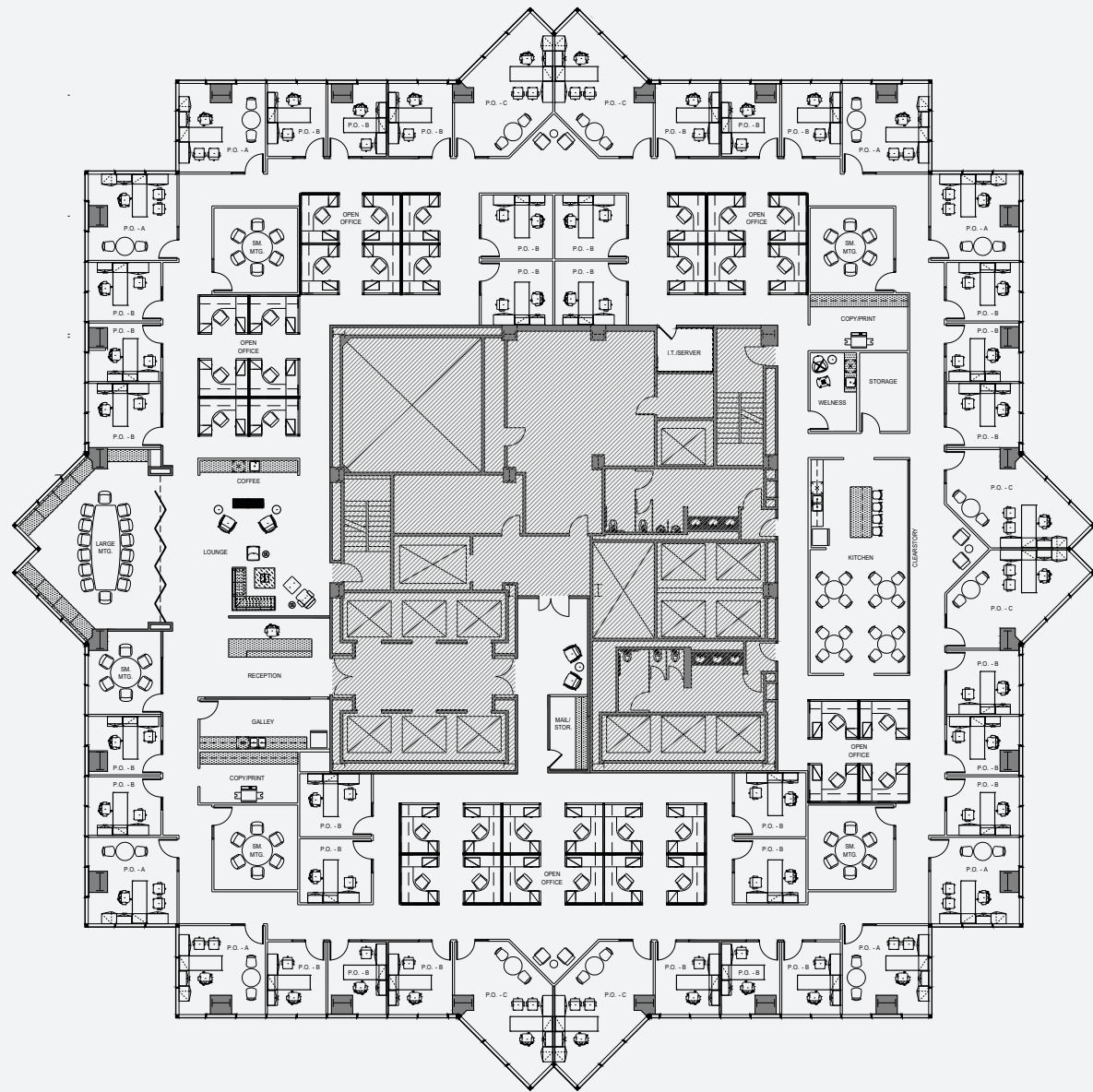
**ON-SITE AMENITIES:**

- Venue Meetings & Events
- Dining
- Kinetic Fitness with locker rooms and showers
- Valet Parking



# HYPOTHETICAL FLOOR PLANS

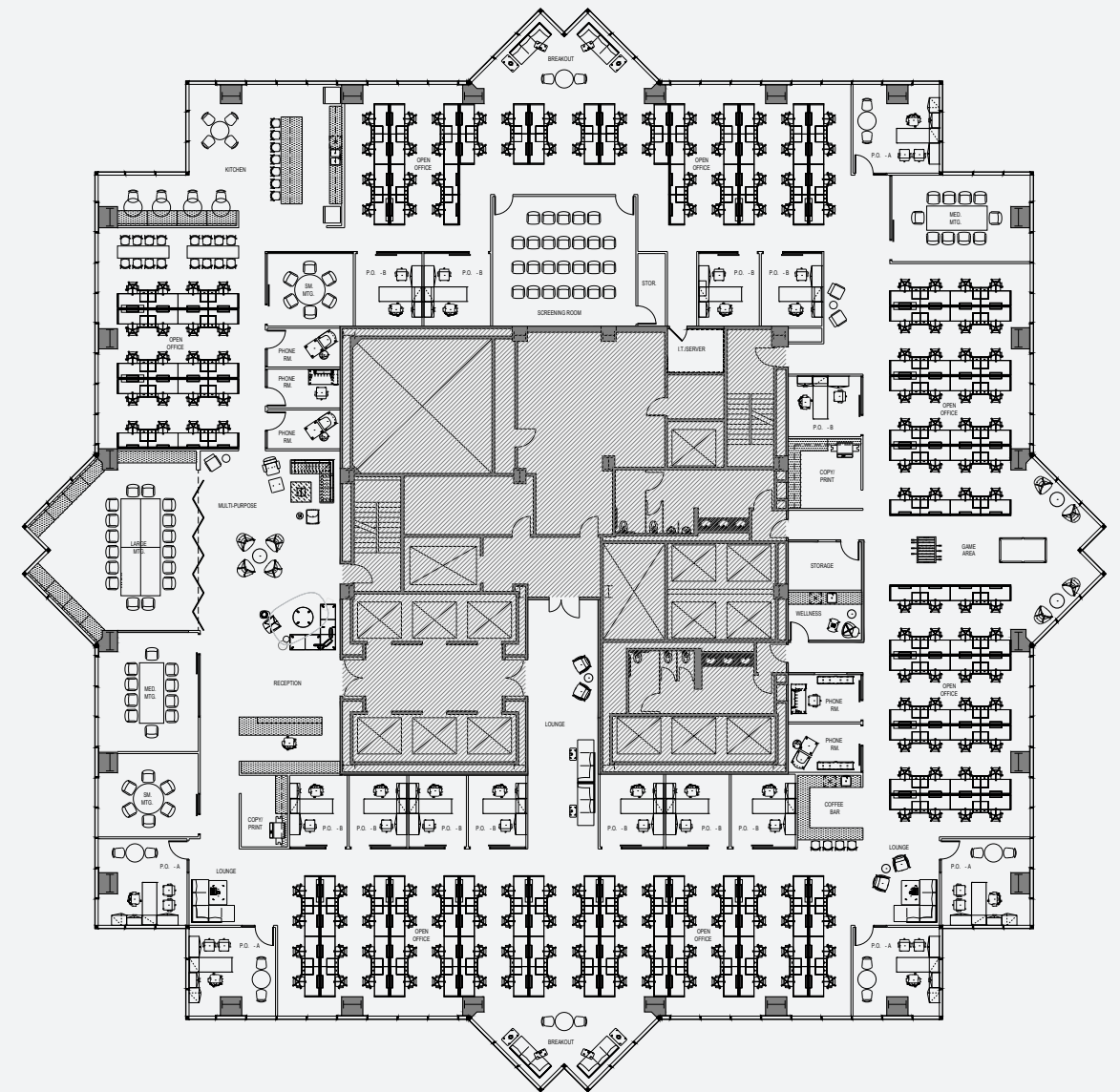
## TRADITIONAL



46 OFFICE SPACES  
35 WORK STATIONS

6 CONFERENCE ROOMS  
2 COLLABORATION SPACES

## CREATIVE



17 OFFICE SPACES  
92 WORK STATIONS

5 CONFERENCE ROOMS  
12 COLLABORATION SPACES



## BRING YOUR COMPANY CULTURE TO LIFE

---

### CUSTOMER SPACES

Completely customize your workspace to empower your team to excel and take bold, strategic action. Our expert teams will help you create a space that's uniquely your own, reflecting your brand and culture.

---



# CENTRAL CENTURY CITY

## BE IN A LOCATION TALENT LOVES

Enjoy easy access to Olympic Boulevard  
and I-405 for seamless connection to Westfield  
Century City, downtown LA and South Bay cities.

- 1 UCLA CAMPUS
- 2 WESTFIELD CENTURY CITY  
Featuring more than 200 shops and restaurants,  
choose from an inspired mix of dining options.
- 3 FAIRMONT CENTURY PLAZA HOTEL
- 4 LOS ANGELES COUNTRY CLUB
- 5 BEVERLY HILTON
- 6 WALDORF ASTORIA
- 7 FOX STUDIOS



# 2121

AVENUE OF THE STARS

CENTURY CITY



FOR LEASING INFORMATION



RICK BUCKLEY | **Principal**  
rbuckley@larealtypartners.com  
310.890.7050 | CA LIC: #01051873

TYLER THURLOW | **Senior Director**  
tthurlow@larealtypartners.com  
310.415.2492 | CA LIC: #01480579

OWNED AND MANAGED BY



SCOTT DIGGS | **Regional Vice President, Leasing**  
sdiggs@irvinecompany.com  
858.658.7743 | CA LIC: #01368593

KURT DAVIS | **Director, Leasing**  
kudavis@irvinecompany.com  
310.405.8968 | CA LIC: #01886608

[2121AOS.COM](http://2121AOS.COM)

©2025 The Irvine Company LLC. All rights reserved. The information in these materials has been obtained from various sources. While we believe the information to be reliable, neither the Irvine Company nor Irvine Management Company makes any representation or warranty as to the accuracy or completeness of such data and it should be independently verified by prospective tenants. Artist's renderings based on current development concepts are subject to change without notice and are sole property of The Irvine Company LLC. The Irvine Company® is a registered trademark of Irvine Management Company. LIC. # 02041810.