

HARLEM, MANHATTAN, NEW YORK

2854 FREDERICK DOUGLASS BOULEVARD

MOD



SPACE DETAILS

LOCATION

Between W 151st Street & W 152nd Street

SPACE

Ground Floor: 2,200 SF

POSSESSION

Immediate

ASKING RENT

Upon Request

NEIGHBORS

Patrick's Place, Key Food Supermarket, Macomb's Bridge Library, Jackie Robinson Park, cafés and service businesses along Frederick Douglass Boulevard, dense residential mid-rise housing.

TRANSPORTATION



COMMENTS

- Inline retail space with glass frontage and bright interior exposure along FDB Boulevard
- Former early childhood education center with multiple rooms and bathrooms in place
- Ideal for daycare, community use, medical office, salon, or service retail
- Surrounded by parks, schools, and dense residential buildings offering steady foot traffic

CONTACTS

MEYER DAGMY

718-249-3613

m@modcre.com

EDDIE MAMIYE

917-379-6719

e@modcre.com

JACK DAGMY

718-249-3614

j@modcre.com



EXTERIOR IMAGES



CONTACTS

MEYER DAGMY

718-249-3613

m@modcre.com

EDDIE MAMIYE

917-379-6719

e@modcre.com

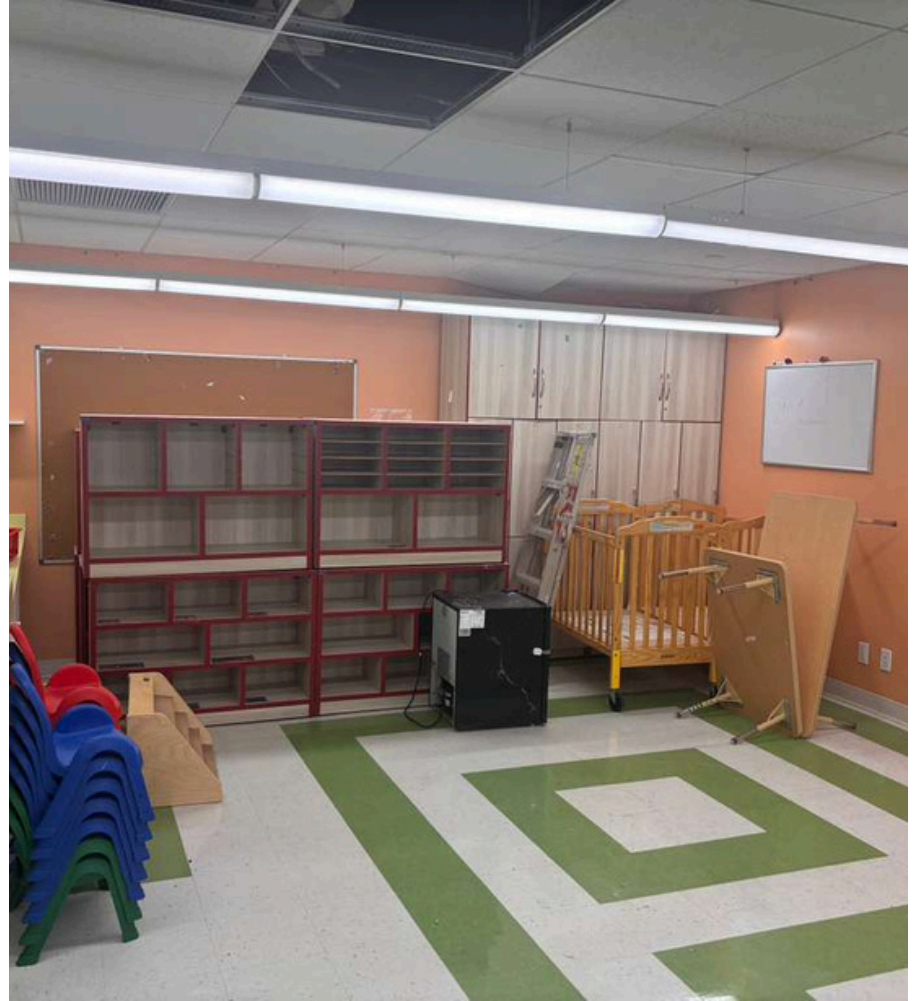
JACK DAGMY

718-249-3614

j@modcre.com



INTERIOR IMAGES



CONTACTS

MEYER DAGMY

718-249-3613

m@modcre.com

EDDIE MAMIYE

917-379-6719

e@modcre.com

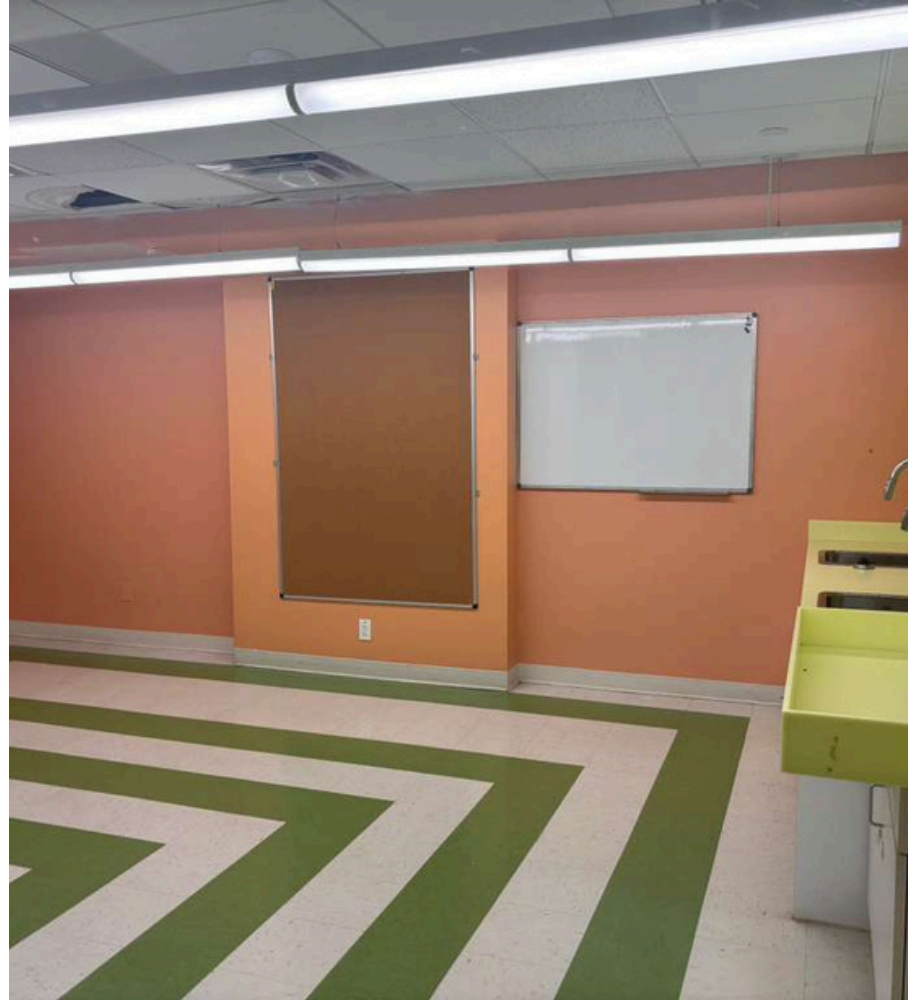
JACK DAGMY

718-249-3614

j@modcre.com



INTERIOR IMAGES



CONTACTS

MEYER DAGMY

718-249-3613

m@modcre.com

EDDIE MAMIYE

917-379-6719

e@modcre.com

JACK DAGMY

718-249-3614

j@modcre.com



AREA MAP



CONTACTS

MEYER DAGMY

718-249-3613

m@modcre.com

EDDIE MAMIYE

917-379-6719

e@modcre.com

JACK DAGMY

718-249-3614

j@modcre.com

