



**HARVEST**  
International

Commercial Real Estate Services Since 1992

**FOR LEASE | 9500± SF Ground Floor Commercial Space**

**131-58 SANFORD AVE A.K.A.**

**42-01 HAIGHT STREET, FLUSHING, QUEENS, NY, 11355**



For further information, kindly contact exclusive agents:

**CHARLES G. CHAN | CEO**  
charlesc@harvestinternational.net  
516.326.8223

**DAPHNE ZHOU-CHAN | President & COO**  
daphnec@harvestinternational.net  
516.326.8200

All information furnished regarding property for sale, rental, or financing is from sources deemed reliable, such information has not been verified and no express representation is made nor is any to be implied as to the accuracy thereof and it is submitted subject to errors, omissions, change of price, rental or other conditions, prior sale, lease or financing, or withdrawal without notice and to any special conditions imposed by our principal. As an example, all zoning information, buildable square footage estimates and indicated users must be independently verified. Vacancy factors used herein are an arbitrary percentage used only as an example, and does not necessarily relate to actual vacancy, if any. All measurements are approximate and should be independently verified. Procuring broker shall only be entitled to a commission, calculated in accordance with the rates approved by our principal, only if such procuring broker executes a brokerage agreement acceptable to us and our principal and the conditions set forth in the brokerage agreement are fully and satisfied unconditionally.

**HARVEST INTERNATIONAL** | Licensed Real Estate Broker | 1129 Northern Blvd., Suite 404, Manhasset, NY 11030 | [www.harvestinternational.net](http://www.harvestinternational.net)

**PROPERTY INFORMATION:**

**Great location in downtown Flushing. Next to Home Depot. Good for home decoration, construction material supplies, lighting, and furniture business and more!**

<b>Block/ Lot:</b>	<b>5065/ 9</b>
<b>Building Dimension:</b>	<b>95x100</b>
<b>Available Size:</b>	<b>9500 sf ±</b>
<b>Zoning:</b>	<b>M1-1</b>
<b>Ceiling Height:</b>	<b>Approx. 16'</b>
<b>Loading:</b>	<b>2 drive-in doors.</b>
<b>Fire Proof System:</b>	<b>Wet sprinkler system.</b>
<b>Property Type:</b>	<b>Industrial, warehouse, showroom and retail.</b>
<b>Other Features:</b>	<b>Fully sprinklered. Gas heat.</b>
<b>Price:</b>	<b>Upon request.</b>



For further information, kindly contact exclusive agents:

**CHARLES G. CHAN | CEO**  
charlesc@harvestinternational.net  
516.326.8223

**DAPHNE ZHOU-CHAN | President & COO**  
daphnec@harvestinternational.net  
516.326.8200

All information furnished regarding property for sale, rental, or financing is from sources deemed reliable, such information has not been verified and no express representation is made nor is any to be implied as to the accuracy thereof and it is submitted subject to errors, omissions, change of price, rental or other conditions, prior sale, lease or financing, or withdrawal without notice and to any special conditions imposed by our principal. As an example, all zoning information, buildable square footage estimates and indicated users must be independently verified. Vacancy factors used herein are an arbitrary percentage used only as an example, and does not necessarily relate to actual vacancy, if any. All measurements are approximate and should be independently verified. Procuring broker shall only be entitled to a commission, calculated in accordance with the rates approved by our principal, only if such procuring broker executes a brokerage agreement acceptable to us and our principal and the conditions set forth in the brokerage agreement are fully and satisfied unconditionally



**HARVEST**  
International

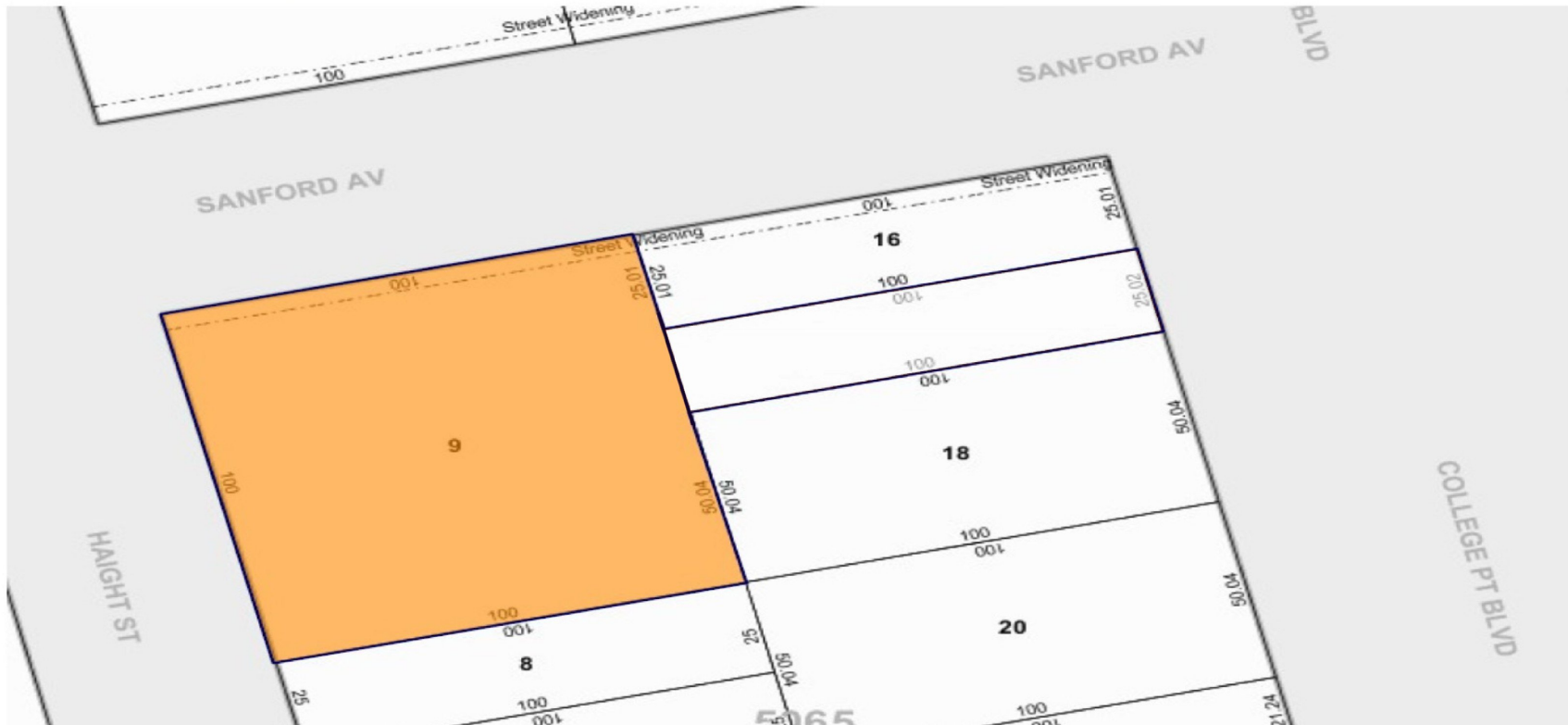
Commercial Real Estate Services Since 1992

**FOR LEASE | 9500± SF Ground Floor Commercial Space**

**131-58 SANFORD AVE A.K.A.**

**42-01 HAIGHT STREET, FLUSHING, QUEENS, NY, 11355**

**TAX MAP (BLOCK: 5065; LOT: 9)**



For further information, kindly contact exclusive agents:

**CHARLES G. CHAN | CEO**  
charlesc@harvestinternational.net  
516.326.8223

**DAPHNE ZHOU-CHAN | President & COO**  
daphnec@harvestinternational.net  
516.326.8200

All information furnished regarding property for sale, rental, or financing is from sources deemed reliable, such information has not been verified and no express representation is made nor is any to be implied as to the accuracy thereof and it is submitted subject to errors, omissions, change of price, rental or other conditions, prior sale, lease or financing, or withdrawal without notice and to any special conditions imposed by our principal. As an example, all zoning information, buildable square footage estimates and indicated users must be independently verified. Vacancy factors used herein are an arbitrary percentage used only as an example, and does not necessarily relate to actual vacancy, if any. All measurements are approximate and should be independently verified. Procuring broker shall only be entitled to a commission, calculated in accordance with the rates approved by our principal, only if such procuring broker executes a brokerage agreement acceptable to us and our principal and the conditions set forth in the brokerage agreement are fully and satisfied unconditionally.

**HARVEST INTERNATIONAL** | Licensed Real Estate Broker | 1129 Northern Blvd., Suite 404, Manhasset, NY 11030 | [www.harvestinternational.net](http://www.harvestinternational.net)



**HARVEST**  
International

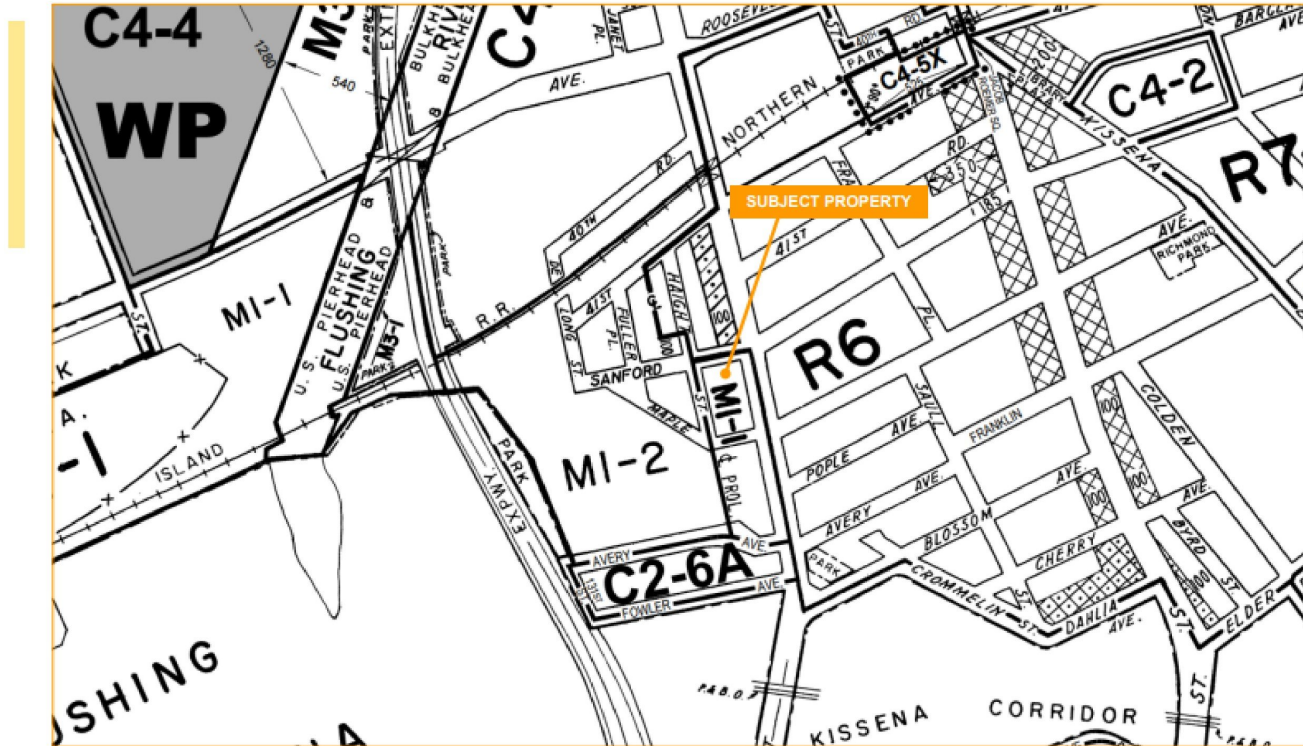
Commercial Real Estate Services Since 1992

**FOR LEASE | 9500± SF Ground Floor Commercial Space**

**131-58 SANFORD AVE A.K.A.**

**42-01 HAIGHT STREET, FLUSHING, QUEENS, NY, 11355**

The subject property is located within an M1-1 zoning district



For further information, kindly contact exclusive agents:

**CHARLES G. CHAN | CEO**  
charlesc@harvestinternational.net  
516.326.8223

**DAPHNE ZHOU-CHAN | President & COO**  
daphnec@harvestinternational.net  
516.326.8200

All information furnished regarding property for sale, rental, or financing is from sources deemed reliable, such information has not been verified and no express representation is made nor is any to be implied as to the accuracy thereof and it is submitted subject to errors, omissions, change of price, rental or other conditions, prior sale, lease or financing, or withdrawal without notice and to any special conditions imposed by our principal. As an example, all zoning information, buildable square footage estimates and indicated users must be independently verified. Vacancy factors used herein are an arbitrary percentage used only as an example, and does not necessarily relate to actual vacancy, if any. All measurements are approximate and should be independently verified. Procuring broker shall only be entitled to a commission, calculated in accordance with the rates approved by our principal, only if such procuring broker executes a brokerage agreement acceptable to us and our principal and the conditions set forth in the brokerage agreement are fully and satisfied unconditionally.

**HARVEST INTERNATIONAL** | Licensed Real Estate Broker | 1129 Northern Blvd., Suite 404, Manhasset, NY 11030 | [www.harvestinternational.net](http://www.harvestinternational.net)