

FOR LEASE

BALTIMORE COUNTY, MD

800 RED BROOK BLVD

RED BROOK CORPORATE CENTER | 300-800 RED BROOK BLVD | OWINGS MILLS, MD 21117



PROPERTY HIGHLIGHTS:

- ▶ 60-ACRE GATED OFFICE PARK
- ▶ FITNESS CENTER AND CONFERENCE CENTER ON-SITE
- ▶ LESS THAN 3 MILES TO METRO CENTRE & MILL STATION
- ▶ CLASS "A" OFFICE SPACE AVAILABLE FOR LEASE, INCLUDING SEVERAL FURNISHED SUITES
- ▶ HOME TO ZURICH, TAI ENGINEERING, SIEMENS, STV ENGINEERING & MORE!

DAVID S. BROWN
ENTERPRISES, L.T.D.

KEVIN KEANE | SVP, OFFICE LEASING
410.581.2519 | KEVIN@DAVIDSBROWN.COM

BRENT MANGUM | VP, OFFICE LEASING
410.581.2518 | BRENT@DAVIDSBROWN.COM

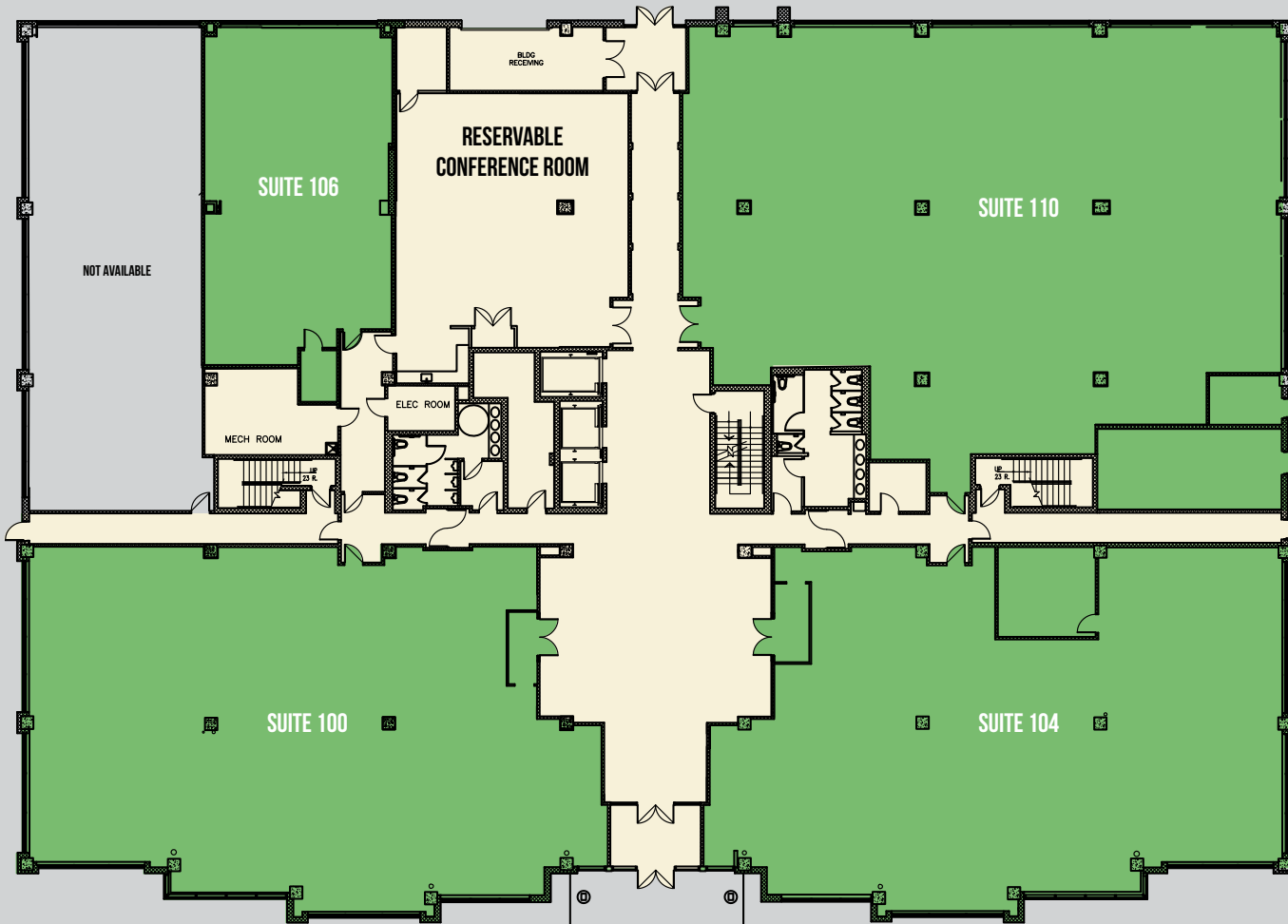
NOAH ADLER | LEASING ASSOCIATE
410.581.2510 | NADLER@DAVIDSBROWN.COM

FOR LEASE

BALTIMORE COUNTY, MD

800 RED BROOK BLVD

RED BROOK CORPORATE CENTER | 300-800 RED BROOK BLVD | OWINGS MILLS, MD 21117



AVAILABLE

- ▶ SUITE 100 - 5,607 SF
- ▶ SUITE 104 - 5,324 SF
- ▶ SUITE 106 - 1,967 SF
- ▶ SUITE 110 - 7,083 SF

FOR LEASE

BALTIMORE COUNTY, MD

800 RED BROOK BLVD

RED BROOK CORPORATE CENTER | 300-800 RED BROOK BLVD | OWINGS MILLS, MD 21117

SUITE 220 VIRTUAL TOUR ▶



AVAILABLE

- ▶ SUITE 200 - 10,263 SF
- ▶ SUITE 210 - 3,959 SF
- ▶ SUITE 220 - 9,491 SF
- ▶ SUITE 230 - 1,755 SF
- ▶ SUITE 240 - 1,728 SF

DAVID S. BROWN
ENTERPRISES, LTD.

KEVIN KEANE | SVP, OFFICE LEASING
410.581.2519 | KEVIN@DAVIDSBROWN.COM

BRENT MANGUM | VP, OFFICE LEASING
410.581.2518 | BRENT@DAVIDSBROWN.COM

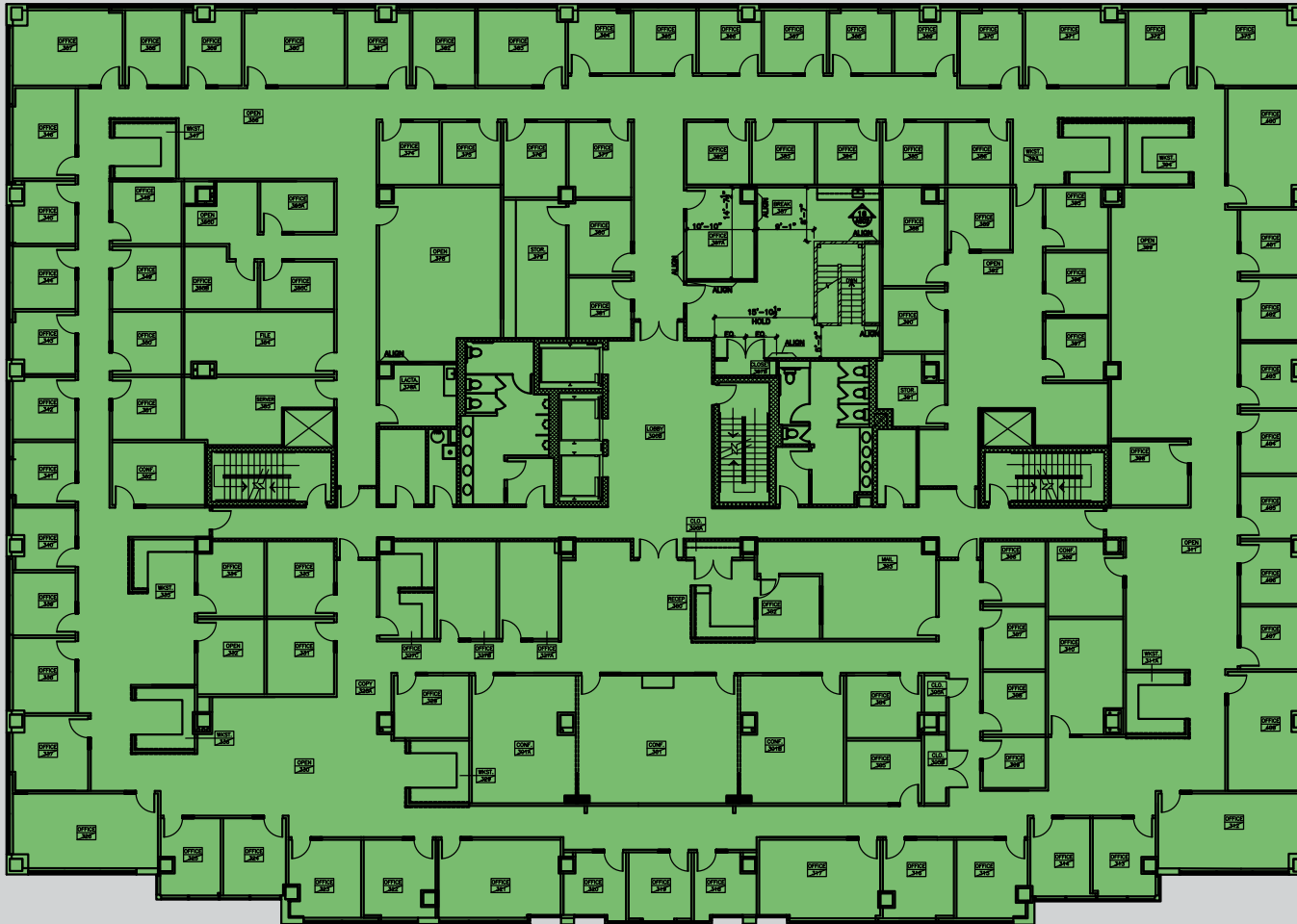
NOAH ADLER | LEASING ASSOCIATE
410.581.2510 | NADLER@DAVIDSBROWN.COM

FOR LEASE

BALTIMORE COUNTY, MD

800 RED BROOK BLVD

RED BROOK CORPORATE CENTER | 300-800 RED BROOK BLVD | OWINGS MILLS, MD 21117



AVAILABLE

► SUITE 300 - 29,351 SF

SUITE 300 VIRTUAL TOUR ►

DAVID S. BROWN
ENTERPRISES, L.T.D.

KEVIN KEANE | SVP, OFFICE LEASING
410.581.2519 | KEVIN@DAVIDSBROWN.COM

BRENT MANGUM | VP, OFFICE LEASING
410.581.2518 | BRENT@DAVIDSBROWN.COM

NOAH ADLER | LEASING ASSOCIATE
410.581.2510 | NADLER@DAVIDSBROWN.COM

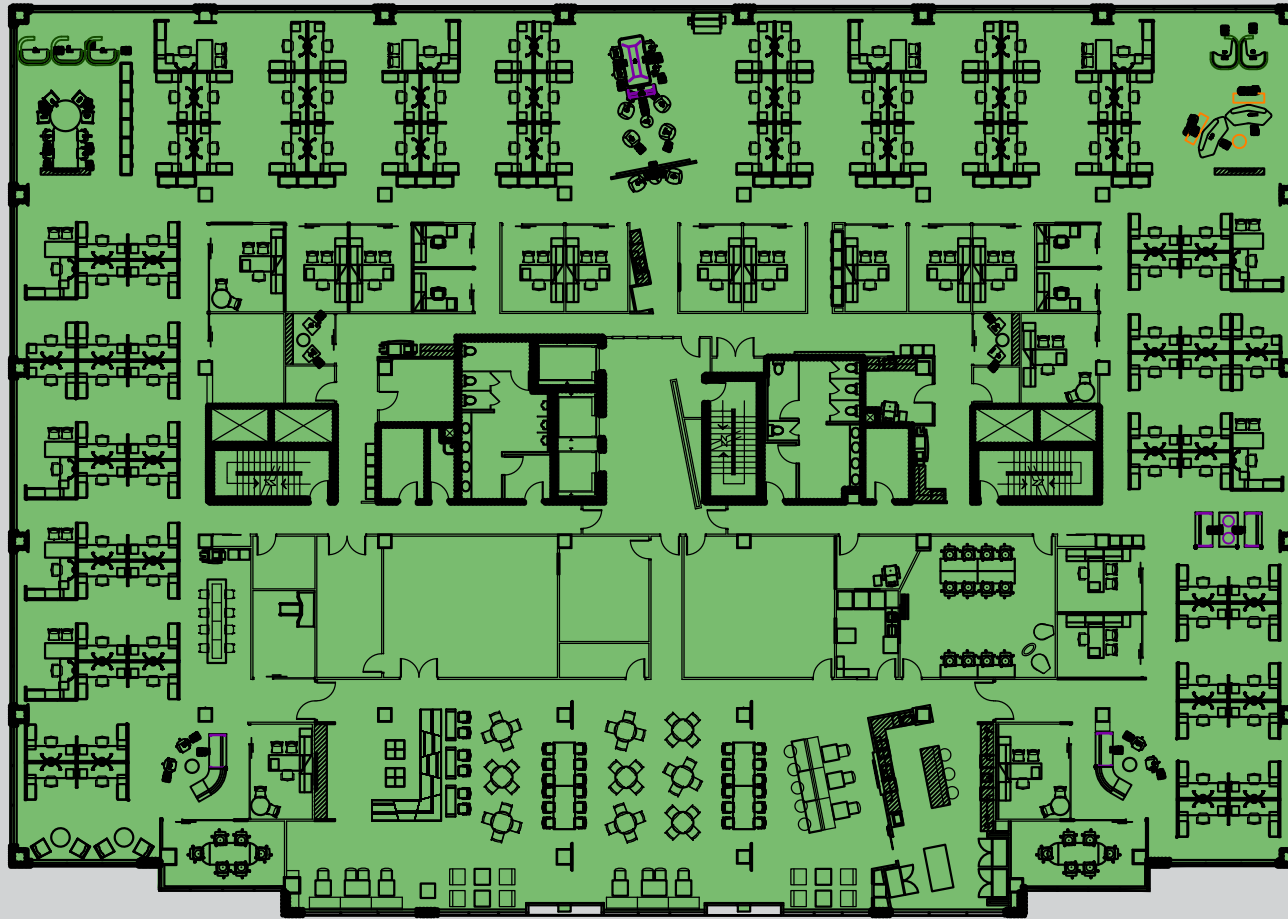
DAVID S. BROWN ENTERPRISES | 100 PAINTERS MILL ROAD, OWINGS MILLS, MD 21117 | 410.581.2520 | WWW.DAVIDSBROWN.COM |    

FOR LEASE

BALTIMORE COUNTY, MD

800 RED BROOK BLVD

RED BROOK CORPORATE CENTER | 300-800 RED BROOK BLVD | OWINGS MILLS, MD 21117



AVAILABLE

▶ SUITE 400 - 30,000 SF AVAILABLE

SUITE 400 VIRTUAL TOUR ▶

*FURNITURE IS SHOWN AS A REFERENCE ONLY.

DAVID S. BROWN
ENTERPRISES, L.T.D.

KEVIN KEANE | SVP, OFFICE LEASING
410.581.2519 | KEVIN@DAVIDSBROWN.COM

BRENT MANGUM | VP, OFFICE LEASING
410.581.2518 | BRENT@DAVIDSBROWN.COM

NOAH ADLER | LEASING ASSOCIATE
410.581.2510 | NADLER@DAVIDSBROWN.COM

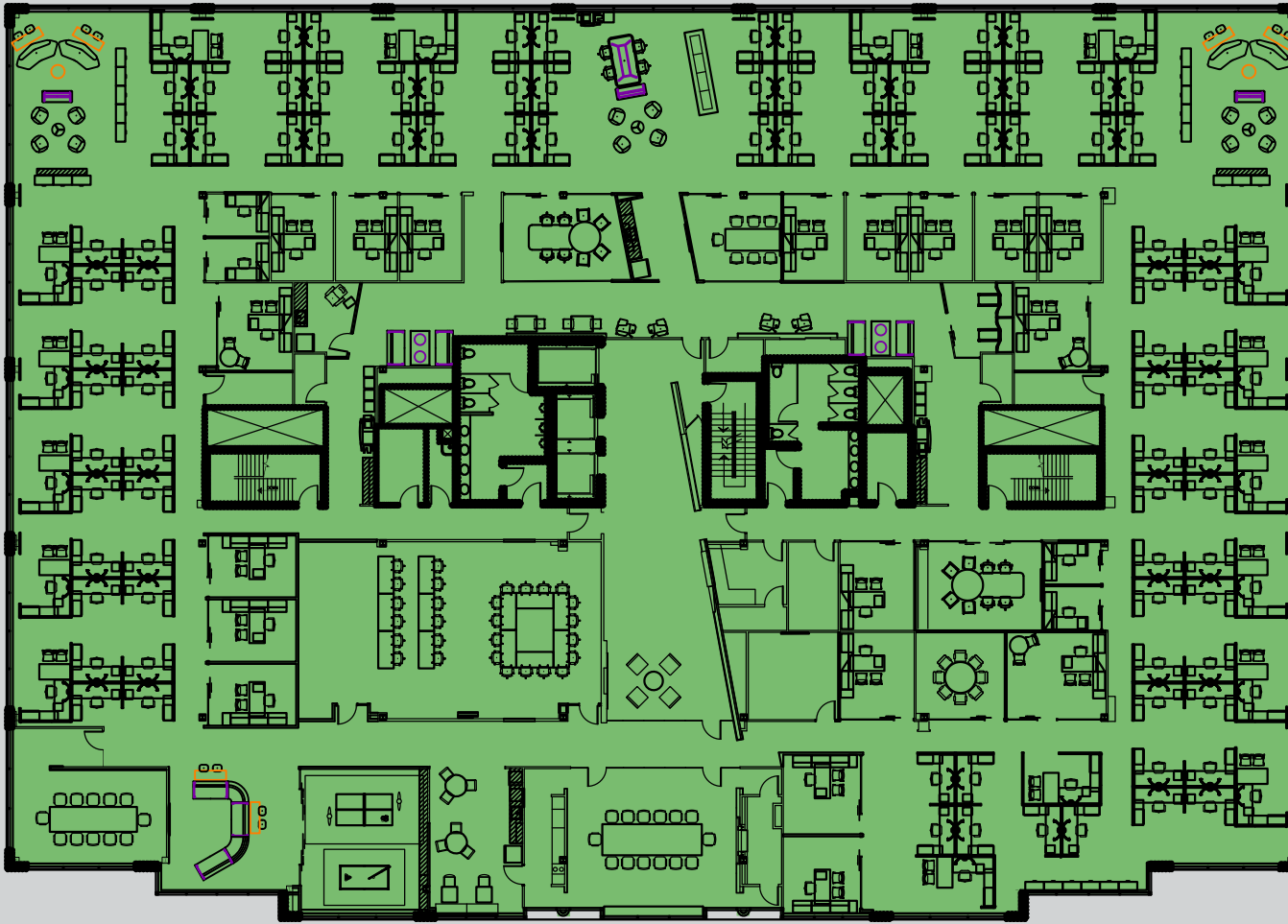
DAVID S. BROWN ENTERPRISES | 100 PAINTERS MILL ROAD, OWINGS MILLS, MD 21117 | 410.581.2520 | WWW.DAVIDSBROWN.COM |

FOR LEASE

BALTIMORE COUNTY, MD

800 RED BROOK BLVD

RED BROOK CORPORATE CENTER | 300-800 RED BROOK BLVD | OWINGS MILLS, MD 21117



AVAILABLE

► SUITE 500 - 30,000 SF AVAILABLE

*FURNITURE IS SHOWN AS A REFERENCE ONLY.

DAVID S. BROWN
ENTERPRISES, L.T.D.

KEVIN KEANE | SVP, OFFICE LEASING
410.581.2519 | KEVIN@DAVIDSBROWN.COM

BRENT MANGUM | VP, OFFICE LEASING
410.581.2518 | BRENT@DAVIDSBROWN.COM

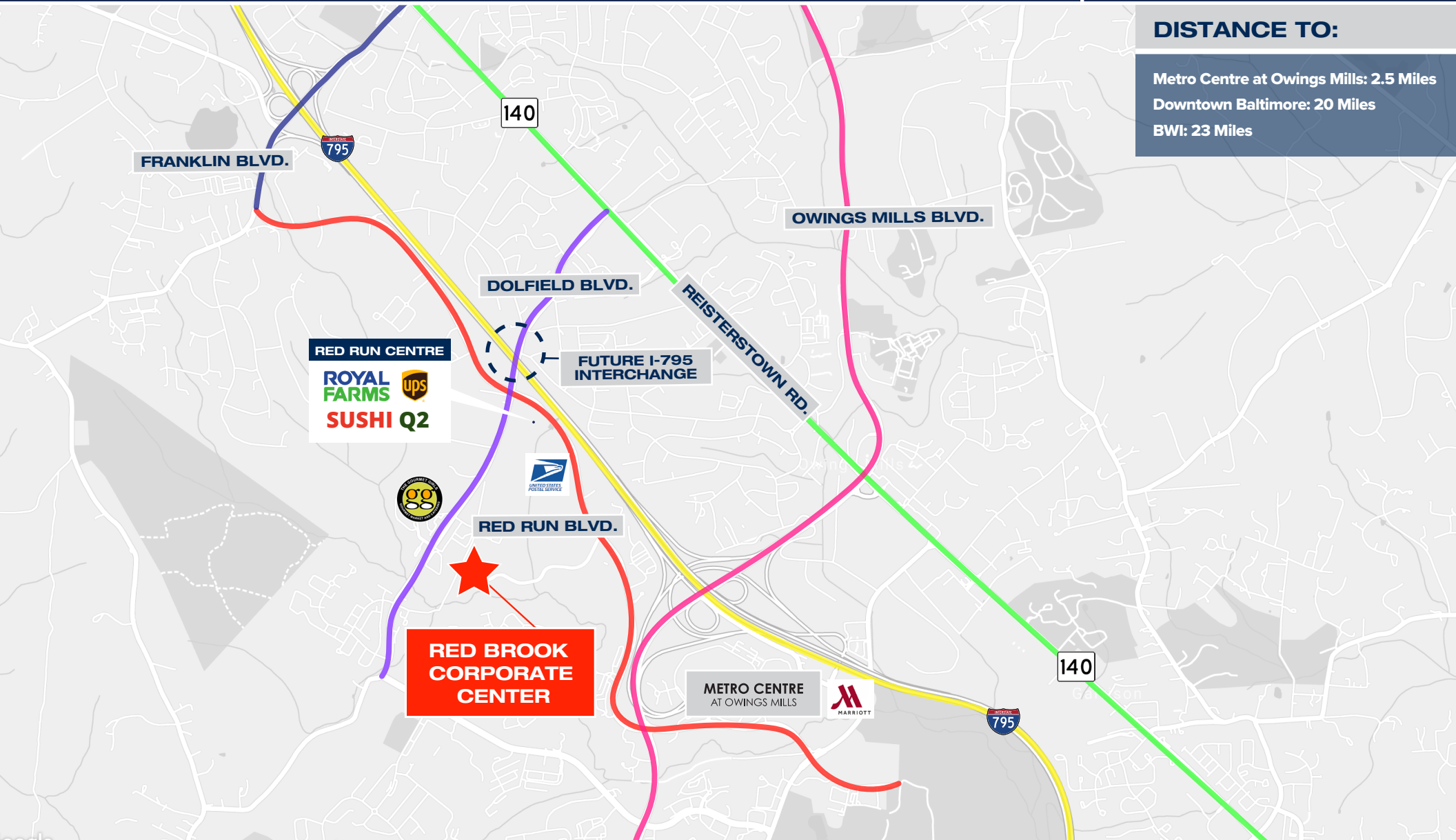
NOAH ADLER | LEASING ASSOCIATE
410.581.2510 | NADLER@DAVIDSBROWN.COM

DAVID S. BROWN ENTERPRISES | 100 PAINTERS MILL ROAD, OWINGS MILLS, MD 21117 | 410.581.2520 | WWW.DAVIDSBROWN.COM |

800 RED BROOK BLVD

RED BROOK CORPORATE CENTER | 300-800 RED BROOK BLVD | OWINGS MILLS, MD 21117

MAP



DISTANCE TO:

Metro Centre at Owings Mills: 2.5 Miles

Downtown Baltimore: 20 Miles

BWI: 23 Miles