



Exclusive Sales Agent = Kenneth R. Labbe  
 Associate Real Estate Broker:  
 Pyramid Real Estate Management (PREM)  
 Kenneth R. Labbe - Direct (203) 391-6805;  
 R. Labbe (203) 348-8566; Extension 805  
 Cell Phone = 860-891-8551  
 Email – [klabbe@pyramidregroup.com](mailto:klabbe@pyramidregroup.com)

## INDUSTRIAL SUITES FOR LEASE – BASIS OF RENT ESTIMATES - PROFORMA

Property: 2015 South Main Street, Middletown, Connecticut

### Asking Lease Rate and Terms:

<u>Category</u>	<u>Sq. Ft.</u>	<u>Amts \$/mo</u>	<u>\$/SF</u>
<u>Unit 3 - 8,640 sf Office Warehouse</u>			
Base Rent	8,640 sf	\$ 6,300	\$ 8.75
Plus - Common Area Maintenance (CAM)		\$ 2,340	\$ 3.25
Subtotal		\$ 8,640	\$ 12.00
<u>Unit 6 - 6,480 sf Office Warehouse</u>			
Base Rent	6,840 sf	\$ 4,995	\$ 9.25
Plus - Common Area Maintenance (CAM)		\$ 1,755	\$ 3.25
Subtotal		\$ 6,750	\$ 12.50
<u>Unit 4 - 4,320 sf Office Warehouse</u>			
Base Rent	4,320 sf	\$ 3,870	\$ 10.75
Plus - Common Area Maintenance (CAM)		\$ 1,170	\$ 3.25
Subtotal		\$ 5,040	\$ 14.00
<u>Unit 1 - 2,160 sf Office Warehouse - View Premium</u>			
Base Rent	2,160 sf	\$ 1,980	\$ 11.00
Plus - Common Area Maintenance (CAM)		\$ 585	\$ 3.25
Subtotal		\$ 2,565	\$ 14.25

Pyramid Real Estate Group

20 Summer Street, Stamford, CT 06901 • Telephone: (203) 348-8566 • Fax (203) 358-9763

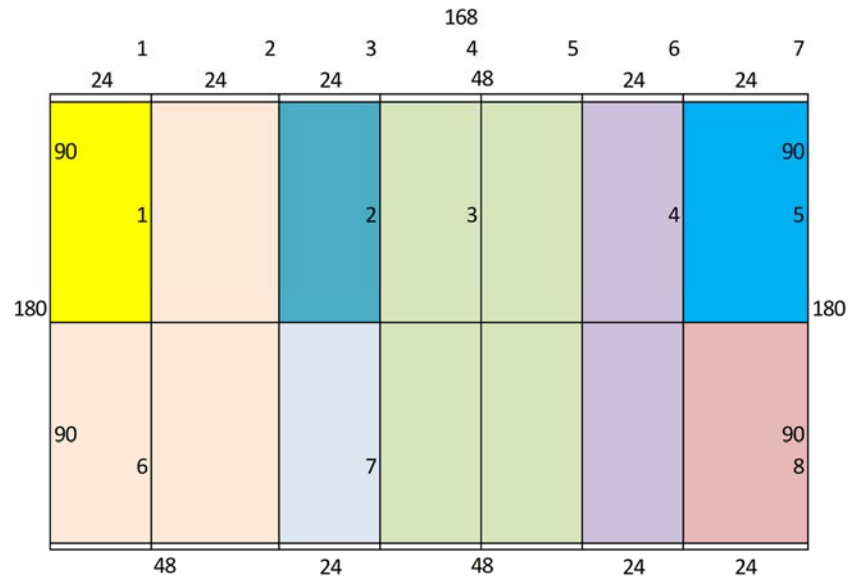
2002 PREM, Inc. The information above has been obtained from sources believed reliable. While we do not doubt its accuracy, we have not verified it and make no guarantee, warranty or representation about it. It is your responsibility to independently confirm its accuracy and completeness. Any projections, opinions, assumptions or estimates used are for example only and do not represent the current or future performance of the property. The value of this transaction to you depends on tax and other factors which should be evaluated by your tax, financial and legal advisors. You and your advisors should conduct a careful, independent investigation of the property to determine to your satisfaction the suitability of the property for your needs.



Exclusive Sales Agent = Kenneth R. Labbe  
 Associate Real Estate Broker:  
 Pyramid Real Estate Management (PREM)  
 Kenneth R. Labbe - Direct (203) 391-6805;  
 R. Labbe (203) 348-8566; Extension 805  
 Cell Phone = 860-891-8551  
 Email – [klabbe@pyramidregroup.com](mailto:klabbe@pyramidregroup.com)

## INDUSTRIAL SUITES FOR LEASE – BASIS OF RENT ESTIMATES – PROFORMA – FLOOR PLAN

Property: 2015 South Main Street, Middletown, Connecticut



Pyramid Real Estate Group

20 Summer Street, Stamford, CT 06901 • Telephone: (203) 348-8566 • Fax (203) 358-9763

© 2007 PREM, Inc. The information above has been obtained from sources believed reliable. While we do not doubt its accuracy, we have not verified it and make no guarantee, warranty or representation about it. It is your responsibility to independently confirm its accuracy and completeness. Any projections, opinions, assumptions or estimates used are for example only and do not represent the current or future performance of the property. The value of this transaction to you depends on tax and other factors which should be evaluated by your tax, financial and legal advisors. You and your advisors should conduct a careful, independent investigation of the property to determine to your satisfaction the suitability of the property for your needs.

## INDUSTRIAL SUITES FOR LEASE – BASIS OF RENT ESTIMATES - PROFORMA



Exclusive Sales Agent = Kenneth R. Labbe  
 Associate Real Estate Broker:  
 Pyramid Real Estate Management (PREM)  
 Kenneth R. Labbe - Direct (203) 391-6805;  
 R. Labbe (203) 348-8566; Extension 805  
 Cell Phone = 860-891-8551  
 Email – [klabbe@pyramidregroup.com](mailto:klabbe@pyramidregroup.com)

Property: 2015 South Main Street, Middletown, Connecticut

### Asking Lease Rate and Terms:

<u>Category</u>	<u>Sq. Ft.</u>	<u>Amts \$/mo</u>	<u>\$/SF</u>
<u>Unit 2 - 2,160 sf Office Warehouse - View Premium</u>			
Base Rent	2,160 sf	\$ 1,980	\$ 11.00
Plus - Common Area Maintenance (CAM)		\$ 585	\$ 3.25
Subtotal		\$ 2,565	\$ 14.25
<u>Unit 5 - 2,160 sf Office Warehouse - View Premium</u>			
Base Rent	2,160 sf	\$ 1,980	\$ 11.00
Plus - Common Area Maintenance (CAM)		\$ 585	\$ 3.25
Subtotal		\$ 2,565	\$ 14.25
<u>Unit 7 - 2,160 sf Office Warehouse</u>			
Base Rent	2,160 sf	\$ 1,890	\$ 10.50
Plus - Common Area Maintenance (CAM)		\$ 585	\$ 3.25
Subtotal		\$ 2,475	\$ 13.75
<u>Unit 8 - 2,160 sf Office Warehouse - View Premium</u>			
Base Rent	2,160 sf	\$ 1,980	\$ 11.00
Plus - Common Area Maintenance (CAM)		\$ 585	\$ 3.25
Subtotal		\$ 2,565	\$ 14.25

Pyramid Real Estate Group

20 Summer Street, Stamford, CT 06901 • Telephone: (203) 348-8566 • Fax (203) 358-9763

© 2007 PREM, Inc. The information above has been obtained from sources believed reliable. While we do not doubt its accuracy, we have not verified it and make no guarantee, warranty or representation about it. It is your responsibility to independently confirm its accuracy and completeness. Any projections, opinions, assumptions or estimates used are for example only and do not represent the current or future performance of the property. The value of this transaction to you depends on tax and other factors which should be evaluated by your tax, financial and legal advisors. You and your advisors should conduct a careful, independent investigation of the property to determine to your satisfaction the suitability of the property for your needs.

# PYRAMID

Real Estate Group

SUBVIVISOIN LEVEL



Pyramid Real Estate Group

20 Summer Street, Stamford, CT 06901 • Telephone: (203) 348-8566 • Fax (203) 358-9763

© 2002 PYRAMID, Inc. The information above has been obtained from sources believed reliable. While we do not doubt its accuracy, we have not verified it and make no guarantee, warranty or representation about it. It is your responsibility to independently confirm its accuracy and completeness. Any projections, opinions, assumptions or estimates used are for example only and do not represent the current or future performance of the property. The value of this transaction to you depends on tax and other factors which should be evaluated by your tax, financial and legal advisors. You and your advisors should conduct a careful, independent investigation of the property to determine to your satisfaction the suitability of the property for your needs.

**PYRAMID**  
Real Estate Group

Brokerage • Consulting • Management Services • Construction

[www.pyramidregroup.com](http://www.pyramidregroup.com)



Exclusive Sales Agent = Kenneth R. Labbe  
 Associate Real Estate Broker:  
 Pyramid Real Estate Management (PREM)  
 Kenneth R. Labbe - Direct (203) 391-6805;  
 R. Labbe (203) 348-8566; Extension 805  
 Cell Phone = 860-891-8551  
 Email – [klabbe@pyramidregroup.com](mailto:klabbe@pyramidregroup.com)

## EXECUTIVE BRIEF – PURCHASE OF THE SUBDIVISION

Property: 2015 South Main Street, Middletown, Connecticut

### Acquisition of Subdivision

Purchase of 9 lot Subdivision

Date of Purchase:	11/2024
Amount of Purchase:	\$ 650,000 plus capital expenditures
Acreage:	23.26 acres
Amount of Purchase Per Acre:	\$ 27,945
Amount of Purchase Per SF of Land:	\$ 0.64

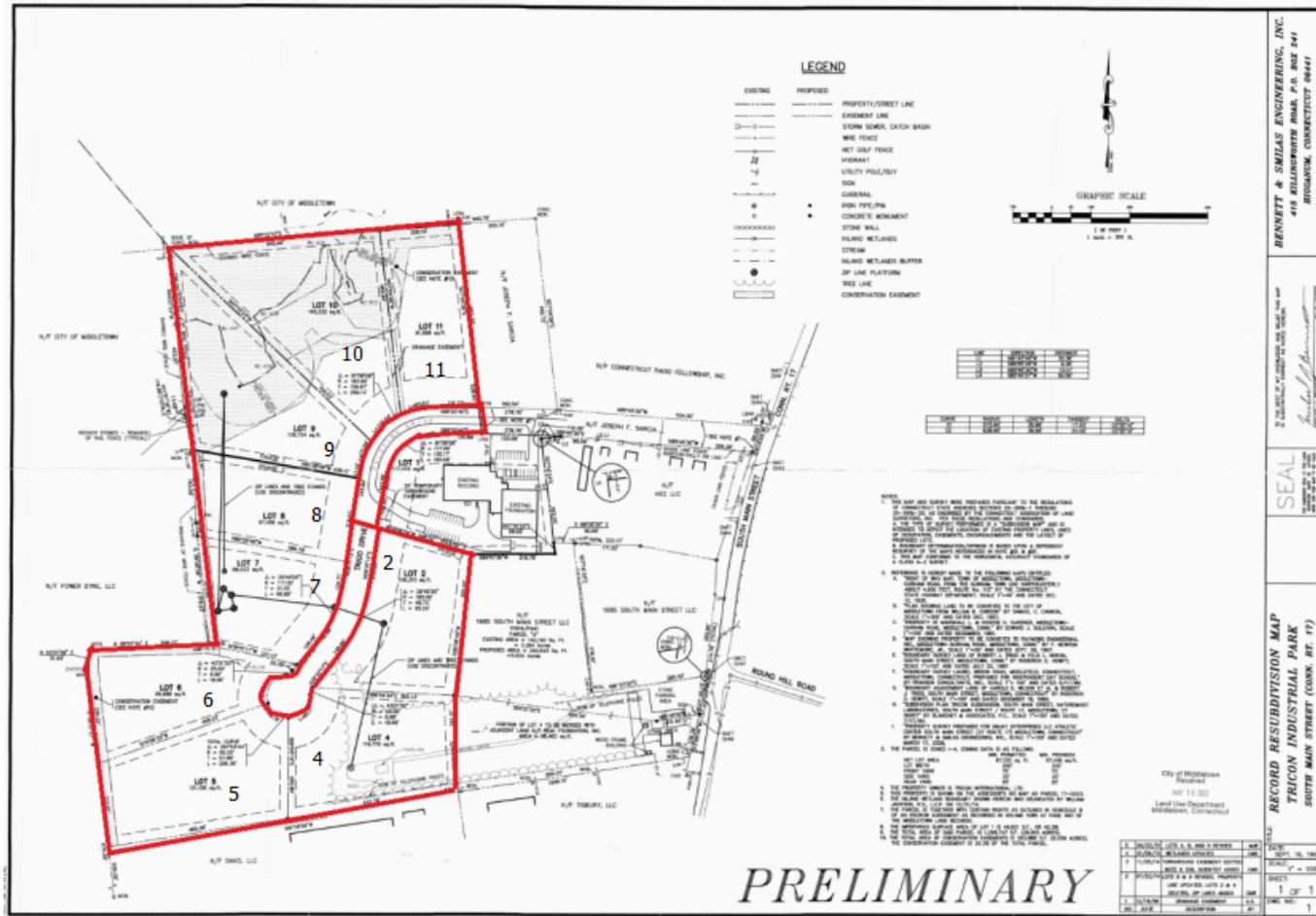
<u>Lot Reference</u>	<u>Acreage</u>
R15552 Map 17/0029 - Lot 2:	2.44 acres
R17054 Map 17/0038 - Lot 4:	2.75 acres
R15553 Map 17/0030 - Lot 5:	2.78 acres
R15554 Map 17/0031 - Lot 6:	2.27 acres
R15555 Map 17/0032 - Lot 7:	2.03 acres
R15556 Map 17/0033 - Lot 8:	2.01 acres
R15557 Map 17/0034 - Lot 9:	3.21 acres
R15558 Map 17/0035 - Lot 10:	3.68 acres
R15559 Map 17/0036 - Lot 11	2.09 acres
Subtotal:	23.26 acres
R15560 Map 17/0037 - Lot 37 - Roadway	2.61 acres
Total Lots and Roadway:	25.87 acres

Pyramid Real Estate Group

20 Summer Street, Stamford, CT 06901 • Telephone: (203) 348-8566 • Fax (203) 358-9763

© 2007 PREM, Inc. The information above has been obtained from sources believed reliable. While we do not doubt its accuracy, we have not verified it and make no guarantee, warranty or representation about it. It is your responsibility to independently confirm its accuracy and completeness. Any projections, opinions, assumptions or estimates used are for example only and do not represent the current or future performance of the property. The value of this transaction to you depends on tax and other factors which should be evaluated by your tax, financial and legal advisors. You and your advisors should conduct a careful, independent investigation of the property to determine to your satisfaction the suitability of the property for your needs.

**PYRAMID**  
Real Estate Group



Pyramid Real Estate Group 20 Summer Street, Stamford, CT 06901 • Telephone: (203) 348-8566 • Fax (203) 358-9763

© 2002 PYRAMID, Inc. The information above has been obtained from sources believed reliable. While we do not doubt its accuracy, we have not verified it and make no guarantee, warranty or representation about it. It is your responsibility to independently confirm its accuracy and completeness. Any projections, opinions, assumptions or estimates used are for example only and do not represent the current or future performance of the property. The value of this transaction to you depends on tax and other factors which should be evaluated by your tax, financial and legal advisors. You and your advisors should conduct a careful, independent investigation of the property to determine to your satisfaction the suitability of the property for your needs.



Exclusive Sales Agent = Kenneth R. Labbe  
 Associate Real Estate Broker:  
 Pyramid Real Estate Management (PREM)  
 Kenneth R. Labbe - Direct (203) 391-6805;  
 R. Labbe (203) 348-8566; Extension 805  
 Cell Phone = 860-891-8551  
 Email – [klabbe@pyramidregroup.com](mailto:klabbe@pyramidregroup.com)

## EXECUTIVE BRIEF – STATE OF THE SUBDIVISION

Property: Trigo Lane Subdivision, Middletown, Connecticut

### Acquisition of Subdivision

Entitlement Status: Entitled; Improved as an industrially zoned subdivision.

Physical Improvement Status: Roughly improved with a roadbed and basic utilities and rough graded wooded sites.

Type of Road: Private

Lots Retained – Food Manufacturer: An indoor cannabis growing warehouse.

Lots Retained – Construction Firm: A warehouse and construction yard and building.

Lots Retained – Self Storage: A 2.95-acre lot fronting on South Main Street on the southwest side of South Main Street (CT route 17). The site improved with a 22,220 square foot self-storage project.

Pyramid Real Estate Group

20 Summer Street, Stamford, CT 06901 • Telephone: (203) 348-8566 • Fax (203) 358-9763

© 2002 PREM, Inc. The information above has been obtained from sources believed reliable. While we do not doubt its accuracy, we have not verified it and make no guarantee, warranty or representation about it. It is your responsibility to independently confirm its accuracy and completeness. Any projections, opinions, assumptions or estimates used are for example only and do not represent the current or future performance of the property. The value of this transaction to you depends on tax and other factors which should be evaluated by your tax, financial and legal advisors. You and your advisors should conduct a careful, independent investigation of the property to determine to your satisfaction the suitability of the property for your needs.

**PYRAMID**  
 Real Estate Group

Brokerage • Consulting • Management Services • Construction

[www.pyramidregroup.com](http://www.pyramidregroup.com)



Exclusive Sales Agent = Kenneth R. Labbe  
 Associate Real Estate Broker:  
 Pyramid Real Estate Management (PREM)  
 Kenneth R. Labbe - Direct (203) 391-6805;  
 R. Labbe (203) 348-8566; Extension 805  
 Cell Phone = 860-891-8551  
 Email – [klabbe@pyramidregroup.com](mailto:klabbe@pyramidregroup.com)



## EXECUTIVE BRIEF – ABUTTING PROJECTS

Property: 60 Trigo Drive, Middletown, Connecticut

User: Absolute Standards Middletown, LLC  
 Project Type: Industrial Building – Marijuana Growing Operation  
 Land Area: 2.70 acres  
 Building Area: 13,950 sf  
 Year Built: 1998

### Acquisition of Subdivision

<u>Building Ref.</u>	<u>Use</u>	<u>SF</u>	<u>Year Built</u>
Building 1	Warehouse	13,950 sf	Built 1998

Pyramid Real Estate Group

20 Summer Street, Stamford, CT 06901 • Telephone: (203) 348-8566 • Fax (203) 358-9763

© 2002 PREM, Inc. The information above has been obtained from sources believed reliable. While we do not doubt its accuracy, we have not verified it and make no guarantee, warranty or representation about it. It is your responsibility to independently confirm its accuracy and completeness. Any projections, opinions, assumptions or estimates used are for example only and do not represent the current or future performance of the property. The value of this transaction to you depends on tax and other factors which should be evaluated by your tax, financial and legal advisors. You and your advisors should conduct a careful, independent investigation of the property to determine to your satisfaction the suitability of the property for your needs.



Exclusive Sales Agent = Kenneth R. Labbe  
 Associate Real Estate Broker:  
 Pyramid Real Estate Management (PREM)  
 Kenneth R. Labbe - Direct (203) 391-6805;  
 R. Labbe (203) 348-8566; Extension 805  
 Cell Phone = 860-891-8551  
 Email – [klabbe@pyramidregroup.com](mailto:klabbe@pyramidregroup.com)

## EXECUTIVE BRIEF – ABUTTING PROJECTS

Property: 1963 South Main Street, Middletown, Connecticut

Project Name: Nosal Builders  
 Project Type: Construction Yard  
 Purchased: December 5, 2022 - \$550,000  
 Land Area: 2.15 acres  
 Building Area: 5,040 sf  
 Web - <https://nosalbuilders.com/about-us/>

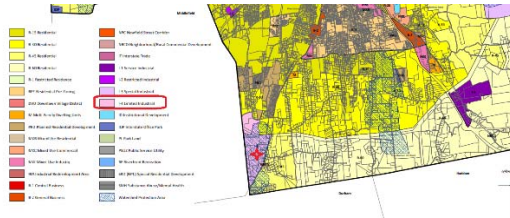
### Acquisition of Subdivision

Building Ref.	Use	SF	Year Built
Building 1	Warehouse	5,040 sf	Built 1997

Pyramid Real Estate Group

20 Summer Street, Stamford, CT 06901 • Telephone: (203) 348-8566 • Fax (203) 358-9763

© 2022 PREM, Inc. The information above has been obtained from sources believed reliable. While we do not doubt its accuracy, we have not verified it and make no guarantee, warranty or representation about it. It is your responsibility to independently confirm its accuracy and completeness. Any projections, opinions, assumptions or estimates used are for example only and do not represent the current or future performance of the property. The value of this transaction to you depends on tax and other factors which should be evaluated by your tax, financial and legal advisors. You and your advisors should conduct a careful, independent investigation of the property to determine to your satisfaction the suitability of the property for your needs.



Exclusive Sales Agent = Kenneth R. Labbe  
 Associate Real Estate Broker:  
 Pyramid Real Estate Management (PREM)  
 Kenneth R. Labbe - Direct (203) 391-6805;  
 Phone (203) 348-8566; Extension 805  
 Cell Phone = 860-891-8551  
 Email – [klabbe@pyramidregroup.com](mailto:klabbe@pyramidregroup.com)

FOR SALE – Approved Industrial Lot – Industrial 4 Zoning

Zoning – Regulations – I-4 Limited Industrial Zone

**§2.19 I-4- Limited Industrial Zone.**

1. **Description.** The zone is composed of certain lands so situated as to be suitable for industrial development.
2. **Uses.** No land shall be used or occupied and no structure shall be erected, constructed, reconstructed, altered, or used, except for any use which is shown in I-2 in §6.2 Business Zones, Industrial Zones and Other Non-residential Zones Use Schedule, and shall be subject to such provisions as referred to in that column.
3. **Area, Bulk, and Yard Requirements.**

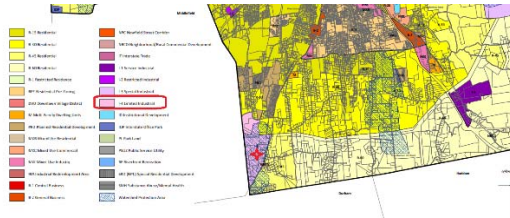
Lot Size:	2 ac. minimum.
Lot Width:	200 ft. minimum.
Front Yard:	75 ft. minimum.
Rear Yard:	25 ft. minimum.
Side Yard:	20 ft. minimum.
Building Coverage:	40% maximum.
Height:	35 ft., unless it sets back from each street and lot line, in addition to yard requirements, two feet for each one foot of excess height; but in no case shall it exceed 50 ft. in height, except as provided in §4.8.2 Height Modification and for office buildings which will be permitted up to six stories in height.

Pyramid Real Estate Group

20 Summer Street, Stamford, CT 06901

• Telephone: (203) 348-8566 • Fax (203) 358-9763

© 2007 PREM, Inc. The information above has been obtained from sources believed reliable. While we do not doubt its accuracy, we have not verified it and make no guarantee, warranty or representation about it. It is your responsibility to independently confirm its accuracy and completeness. Any projections, opinions, assumptions or estimates used are for example only and do not represent the current or future performance of the property. The value of this transaction to you depends on tax and other factors which should be evaluated by your tax, financial and legal advisors. You and your advisors should conduct a careful, independent investigation of the property to determine to your satisfaction the suitability of the property for your needs.



FOR SALE – Approved Industrial Lot – Industrial 4 Zoning

Zoning – Regulations – I-4 Limited Industrial Zone

Exclusive Sales Agent = Kenneth R. Labbe  
 Associate Real Estate Broker:  
 Pyramid Real Estate Management (PREM)  
 Kenneth R. Labbe - Direct (203) 391-6805;  
 Phone (203) 348-8566; Extension 805  
 Cell Phone = 860-891-8551  
 Email – [klabbe@pyramidregroup.com](mailto:klabbe@pyramidregroup.com)

4. **Additional Requirements.**
  1. **Off-Street Parking and Off-Street Loading.** Off-street parking and off-street loading shall be provided in connection with any use in this zone in accordance with the provisions of *§4.19 Off-Street Parking and Off-Street Loading*.
  2. **Interior Buffer Area.** Within the industrial zone a buffer area shall be left between the contiguous sites. The buffer shall take maximum advantage of existing natural, topographical features and existing planting. Where these characteristics do not exist provision for screen planting shall be included in site development proposals.

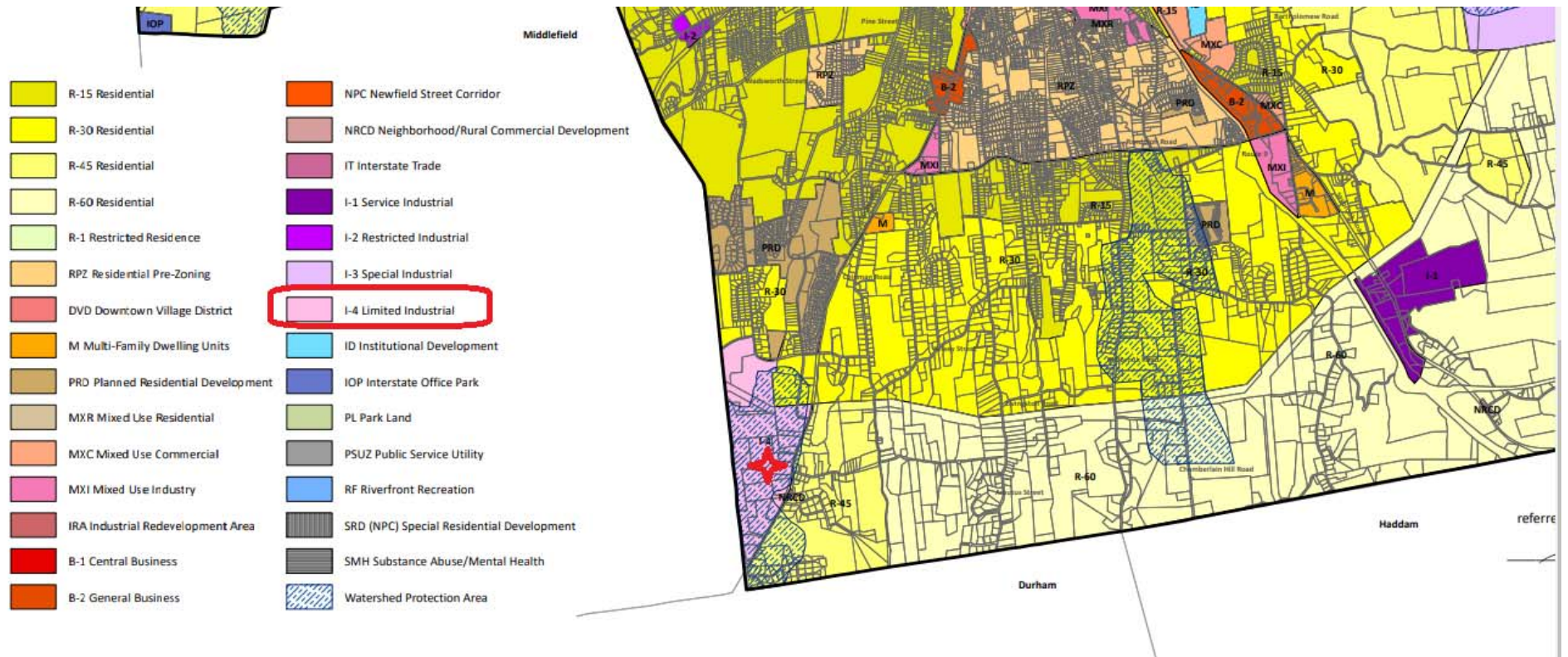
Pyramid Real Estate Group

20 Summer Street, Stamford, CT 06901

• Telephone: (203) 348-8566 • Fax (203) 358-9763

© 2007 PREM, Inc. The information above has been obtained from sources believed reliable. While we do not doubt its accuracy, we have not verified it and make no guarantee, warranty or representation about it. It is your responsibility to independently confirm its accuracy and completeness. Any projections, opinions, assumptions or estimates used are for example only and do not represent the current or future performance of the property. The value of this transaction to you depends on tax and other factors which should be evaluated by your tax, financial and legal advisors. You and your advisors should conduct a careful, independent investigation of the property to determine to your satisfaction the suitability of the property for your needs.

## Zoning Map



Pyramid Real Estate Group

20 Summer Street, Stamford, CT 06901

• Telephone: (203) 348-8566 • Fax (203) 358-9763

© 2002 PYRAMID, Inc. The information above has been obtained from sources believed reliable. While we do not doubt its accuracy, we have not verified it and make no guarantee, warranty or representation about it. It is your responsibility to independently confirm its accuracy and completeness. Any projections, opinions, assumptions or estimates used are for example only and do not represent the current or future performance of the property. The value of this transaction to you depends on tax and other factors which should be evaluated by your tax, financial and legal advisors. You and your advisors should conduct a careful, independent investigation of the property to determine to your satisfaction the suitability of the property for your needs.

**PYRAMID**  
Real Estate Group

Brokerage • Consulting • Management Services • Construction

www.pyramidregroup.com



FOR LEASE – 30,240 SQUARE FOOT WAREHOUSE DIVIDED INTO UNITS

Real Estate Taxes:

Asking Price – Lot Price:

<u>Category</u>	<u>Amounts \$</u>	<u>Amts \$/SF</u>
Average Suite Size:	30,240 sf	
Average Real Estate Tax PSF:	\$ 1.75 per square foot	

Exclusive Sales Agent = Kenneth R. Labbe  
 Associate Real Estate Broker:  
 Pyramid Real Estate Management (PREM)  
 Kenneth R. Labbe - Direct (203) 391-6805;  
 R. Labbe (203) 348-8566; Extension 805  
 Cell Phone = 860-891-8551  
 Email – [klabbe@pyramidregroup.com](mailto:klabbe@pyramidregroup.com)

Pyramid Real Estate Group

20 Summer Street, Stamford, CT 06901 • Telephone: (203) 348-8566 • Fax (203) 358-9763

© 2002 PREM, Inc. The information above has been obtained from sources believed reliable. While we do not doubt its accuracy, we have not verified it and make no guarantee, warranty or representation about it. It is your responsibility to independently confirm its accuracy and completeness. Any projections, opinions, assumptions or estimates used are for example only and do not represent the current or future performance of the property. The value of this transaction to you depends on tax and other factors which should be evaluated by your tax, financial and legal advisors. You and your advisors should conduct a careful, independent investigation of the property to determine to your satisfaction the suitability of the property for your needs.

2015 South Main Street Subdivision, Middletown, CT – Incomplete roadway to food warehouse



Pyramid Real Estate Group

20 Summer Street, Stamford, CT 06901 • Telephone: (203) 348-8566 • Fax (203) 358-9763

© 2002 PYRAMID, Inc. The information above has been obtained from sources believed reliable. While we do not doubt its accuracy, we have not verified it and make no guarantee, warranty or representation about it. It is your responsibility to independently confirm its accuracy and completeness. Any projections, opinions, assumptions or estimates used are for example only and do not represent the current or future performance of the property. The value of this transaction to you depends on tax and other factors which should be evaluated by your tax, financial and legal advisors. You and your advisors should conduct a careful, independent investigation of the property to determine to your satisfaction the suitability of the property for your needs.

2015 South Main Street Subdivision, Middletown, CT – Future Industrial Lot and Land



Pyramid Real Estate Group

20 Summer Street, Stamford, CT 06901 • Telephone: (203) 348-8566 • Fax (203) 358-9763

© 2002 PYRAMID, Inc. The information above has been obtained from sources believed reliable. While we do not doubt its accuracy, we have not verified it and make no guarantee, warranty or representation about it. It is your responsibility to independently confirm its accuracy and completeness. Any projections, opinions, assumptions or estimates used are for example only and do not represent the current or future performance of the property. The value of this transaction to you depends on tax and other factors which should be evaluated by your tax, financial and legal advisors. You and your advisors should conduct a careful, independent investigation of the property to determine to your satisfaction the suitability of the property for your needs.

**PYRAMID**  
Real Estate Group

Brokerage • Consulting • Management Services • Construction

[www.pyramidregroup.com](http://www.pyramidregroup.com)

2015 South Main Street Subdivision, Middletown, CT – Future Industrial Lot and Land



Pyramid Real Estate Group

20 Summer Street, Stamford, CT 06901 • Telephone: (203) 348-8566 • Fax (203) 358-9763

© 2002 PYRAMID, Inc. The information above has been obtained from sources believed reliable. While we do not doubt its accuracy, we have not verified it and make no guarantee, warranty or representation about it. It is your responsibility to independently confirm its accuracy and completeness. Any projections, opinions, assumptions or estimates used are for example only and do not represent the current or future performance of the property. The value of this transaction to you depends on tax and other factors which should be evaluated by your tax, financial and legal advisors. You and your advisors should conduct a careful, independent investigation of the property to determine to your satisfaction the suitability of the property for your needs.

2015 South Main Street Subdivision, Middletown, CT – Future Industrial Lot and Land



Pyramid Real Estate Group

20 Summer Street, Stamford, CT 06901 • Telephone: (203) 348-8566 • Fax (203) 358-9763

© 2002 PYRAMID, Inc. The information above has been obtained from sources believed reliable. While we do not doubt its accuracy, we have not verified it and make no guarantee, warranty or representation about it. It is your responsibility to independently confirm its accuracy and completeness. Any projections, opinions, assumptions or estimates used are for example only and do not represent the current or future performance of the property. The value of this transaction to you depends on tax and other factors which should be evaluated by your tax, financial and legal advisors. You and your advisors should conduct a careful, independent investigation of the property to determine to your satisfaction the suitability of the property for your needs.

# PYRAMID

- Real Estate Group

2015 South Main Street Subdivision, Middletown, CT – Rough Finished Road to be Finished by Seller



Pyramid Real Estate Group    20 Summer Street, Stamford, CT 06901    • Telephone: (203) 348-8566    • Fax (203) 358-9763

© 2002 PYRAMID, Inc. The information above has been obtained from sources believed reliable. While we do not doubt its accuracy, we have not verified it and make no guarantee, warranty or representation about it. It is your responsibility to independently confirm its accuracy and completeness. Any projections, opinions, assumptions or estimates used are for example only and do not represent the current or future performance of the property. The value of this transaction to you depends on tax and other factors which should be evaluated by your tax, financial and legal advisors. You and your advisors should conduct a careful, independent investigation of the property to determine to your satisfaction the suitability of the property for your needs.

**PYRAMID**  
Real Estate Group

Brokerage • Consulting • Management Services • Construction

[www.pyramidregroup.com](http://www.pyramidregroup.com)

2015 South Main Street Subdivision, Middletown, CT – Future Lots and Land



Pyramid Real Estate Group

20 Summer Street, Stamford, CT 06901 • Telephone: (203) 348-8566 • Fax (203) 358-9763

© 2002 PYRAMID, Inc. The information above has been obtained from sources believed reliable. While we do not doubt its accuracy, we have not verified it and make no guarantee, warranty or representation about it. It is your responsibility to independently confirm its accuracy and completeness. Any projections, opinions, assumptions or estimates used are for example only and do not represent the current or future performance of the property. The value of this transaction to you depends on tax and other factors which should be evaluated by your tax, financial and legal advisors. You and your advisors should conduct a careful, independent investigation of the property to determine to your satisfaction the suitability of the property for your needs.

Entry Road, Trigo Drive View North Along Route 17/South Main Street



Pyramid Real Estate Group

20 Summer Street, Stamford, CT 06901 • Telephone: (203) 348-8566 • Fax (203) 358-9763

© 2002 PYRAMID, Inc. The information above has been obtained from sources believed reliable. While we do not doubt its accuracy, we have not verified it and make no guarantee, warranty or representation about it. It is your responsibility to independently confirm its accuracy and completeness. Any projections, opinions, assumptions or estimates used are for example only and do not represent the current or future performance of the property. The value of this transaction to you depends on tax and other factors which should be evaluated by your tax, financial and legal advisors. You and your advisors should conduct a careful, independent investigation of the property to determine to your satisfaction the suitability of the property for your needs.

**PYRAMID**  
Real Estate Group

Brokerage • Consulting • Management Services • Construction

[www.pyramidregroup.com](http://www.pyramidregroup.com)

# PYRAMID

- Real Estate Group

2015 South Main Street Subdivision, Middletown, CT – Entry Road, Trigo Drive



Pyramid Real Estate Group

20 Summer Street, Stamford, CT 06901 • Telephone: (203) 348-8566 • Fax (203) 358-9763

© 2002 PYRAMID, Inc. The information above has been obtained from sources believed reliable. While we do not doubt its accuracy, we have not verified it and make no guarantee, warranty or representation about it. It is your responsibility to independently confirm its accuracy and completeness. Any projections, opinions, assumptions or estimates used are for example only and do not represent the current or future performance of the property. The value of this transaction to you depends on tax and other factors which should be evaluated by your tax, financial and legal advisors. You and your advisors should conduct a careful, independent investigation of the property to determine to your satisfaction the suitability of the property for your needs.

**PYRAMID**  
Real Estate Group

Brokerage • Consulting • Management Services • Construction

[www.pyramidregroup.com](http://www.pyramidregroup.com)

# PYRAMID

- Real Estate Group

Entry Road, Trigo Drive View South Along Route 17/South Main Street



Pyramid Real Estate Group

20 Summer Street, Stamford, CT 06901 • Telephone: (203) 348-8566 • Fax (203) 358-9763

© 2002 PYRAMID, Inc. The information above has been obtained from sources believed reliable. While we do not doubt its accuracy, we have not verified it and make no guarantee, warranty or representation about it. It is your responsibility to independently confirm its accuracy and completeness. Any projections, opinions, assumptions or estimates used are for example only and do not represent the current or future performance of the property. The value of this transaction to you depends on tax and other factors which should be evaluated by your tax, financial and legal advisors. You and your advisors should conduct a careful, independent investigation of the property to determine to your satisfaction the suitability of the property for your needs.

**PYRAMID**  
Real Estate Group

Brokerage • Consulting • Management Services • Construction

[www.pyramidregroup.com](http://www.pyramidregroup.com)

# PYRAMID

- Real Estate Group

Entry Road, Trigo Drive View North Along Route 17/South Main Street



Pyramid Real Estate Group

20 Summer Street, Stamford, CT 06901 • Telephone: (203) 348-8566 • Fax (203) 358-9763

© 2002 PYRAMID, Inc. The information above has been obtained from sources believed reliable. While we do not doubt its accuracy, we have not verified it and make no guarantee, warranty or representation about it. It is your responsibility to independently confirm its accuracy and completeness. Any projections, opinions, assumptions or estimates used are for example only and do not represent the current or future performance of the property. The value of this transaction to you depends on tax and other factors which should be evaluated by your tax, financial and legal advisors. You and your advisors should conduct a careful, independent investigation of the property to determine to your satisfaction the suitability of the property for your needs.

**PYRAMID**  
Real Estate Group

Brokerage • Consulting • Management Services • Construction

[www.pyramidregroup.com](http://www.pyramidregroup.com)

Entry Road, Trigo Drive View East Across Route 17/South Main Street



Pyramid Real Estate Group

20 Summer Street, Stamford, CT 06901 • Telephone: (203) 348-8566 • Fax (203) 358-9763

© 2002 PYRAMID, Inc. The information above has been obtained from sources believed reliable. While we do not doubt its accuracy, we have not verified it and make no guarantee, warranty or representation about it. It is your responsibility to independently confirm its accuracy and completeness. Any projections, opinions, assumptions or estimates used are for example only and do not represent the current or future performance of the property. The value of this transaction to you depends on tax and other factors which should be evaluated by your tax, financial and legal advisors. You and your advisors should conduct a careful, independent investigation of the property to determine to your satisfaction the suitability of the property for your needs.

**PYRAMID**  
Real Estate Group

Brokerage • Consulting • Management Services • Construction

[www.pyramidregroup.com](http://www.pyramidregroup.com)

2015 South Main Street Subdivision, Middletown, CT – Entry Road, Trigo Drive View East Across Route 17/South Main Street



Pyramid Real Estate Group

20 Summer Street, Stamford, CT 06901 • Telephone: (203) 348-8566 • Fax (203) 358-9763

© 2002 PYRAMID, Inc. The information above has been obtained from sources believed reliable. While we do not doubt its accuracy, we have not verified it and make no guarantee, warranty or representation about it. It is your responsibility to independently confirm its accuracy and completeness. Any projections, opinions, assumptions or estimates used are for example only and do not represent the current or future performance of the property. The value of this transaction to you depends on tax and other factors which should be evaluated by your tax, financial and legal advisors. You and your advisors should conduct a careful, independent investigation of the property to determine to your satisfaction the suitability of the property for your needs.

**PYRAMID**  
Real Estate Group

Brokerage • Consulting • Management Services • Construction

[www.pyramidregroup.com](http://www.pyramidregroup.com)

# PYRAMID

- Real Estate Group

2015 South Main Street Subdivision, Middletown, CT – Entry Road, Trigo Drive



Pyramid Real Estate Group

20 Summer Street, Stamford, CT 06901 • Telephone: (203) 348-8566 • Fax (203) 358-9763

© 2002 PYRAMID, Inc. The information above has been obtained from sources believed reliable. While we do not doubt its accuracy, we have not verified it and make no guarantee, warranty or representation about it. It is your responsibility to independently confirm its accuracy and completeness. Any projections, opinions, assumptions or estimates used are for example only and do not represent the current or future performance of the property. The value of this transaction to you depends on tax and other factors which should be evaluated by your tax, financial and legal advisors. You and your advisors should conduct a careful, independent investigation of the property to determine to your satisfaction the suitability of the property for your needs.

**PYRAMID**  
Real Estate Group

Brokerage • Consulting • Management Services • Construction

[www.pyramidregroup.com](http://www.pyramidregroup.com)

# PYRAMID

- Real Estate Group



Pyramid Real Estate Group

20 Summer Street, Stamford, CT 06901 • Telephone: (203) 348-8566 • Fax (203) 358-9763

© 2002 PYRAMID, Inc. The information above has been obtained from sources believed reliable. While we do not doubt its accuracy, we have not verified it and make no guarantee, warranty or representation about it. It is your responsibility to independently confirm its accuracy and completeness. Any projections, opinions, assumptions or estimates used are for example only and do not represent the current or future performance of the property. The value of this transaction to you depends on tax and other factors which should be evaluated by your tax, financial and legal advisors. You and your advisors should conduct a careful, independent investigation of the property to determine to your satisfaction the suitability of the property for your needs.

**PYRAMID**  
Real Estate Group

Brokerage • Consulting • Management Services • Construction

[www.pyramidregroup.com](http://www.pyramidregroup.com)

# PYRAMID

- Real Estate Group

Drive View South Along Route 17/South Main Street



Pyramid Real Estate Group

20 Summer Street, Stamford, CT 06901 • Telephone: (203) 348-8566 • Fax (203) 358-9763

© 2002 PYRAMID, Inc. The information above has been obtained from sources believed reliable. While we do not doubt its accuracy, we have not verified it and make no guarantee, warranty or representation about it. It is your responsibility to independently confirm its accuracy and completeness. Any projections, opinions, assumptions or estimates used are for example only and do not represent the current or future performance of the property. The value of this transaction to you depends on tax and other factors which should be evaluated by your tax, financial and legal advisors. You and your advisors should conduct a careful, independent investigation of the property to determine to your satisfaction the suitability of the property for your needs.

**PYRAMID**  
Real Estate Group

Brokerage • Consulting • Management Services • Construction

[www.pyramidregroup.com](http://www.pyramidregroup.com)

We appreciate your business...

Kenneth R. Labbe  
Business Development Manager (BDM)/Owner's Rep



Associate Real Estate Broker – State of Connecticut #0795117  
Associated with Pyramid Group - [www.pyramidregroup.com](http://www.pyramidregroup.com)

20 Summer Street  
Stamford, CT 06901

D: 203-391-6805

P: 860.891.8551; P: 203-391-6822 Extension 805; F: 203-872-9023

Geographic Expertise – National

Web - [www.linkedin.com/in/kennethlabbe1](http://www.linkedin.com/in/kennethlabbe1)

Conference – 605-313-4818 x775876

Email – [klabbe@pyramidregroup.com](mailto:klabbe@pyramidregroup.com)