



**BCP**  
BREA, CA

**NEWMARK**

3010-3070 Saturn Street, Brea CA



**BCP**  
BREA, CA

## HIGHLIGHTS



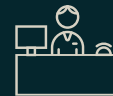
EV Charging Stations



Outdoor Lounge Space



On-Site Management &  
Leasing Offices



Full-Time Day Porter Service



Close Proximity to  
Brea Sports Park



# PROJECT DETAILS



7  
Buildings



±229,448 SF  
Building Size

## PROXIMATE TO NUMEROUS RETAIL AND RESTAURANT AMENITIES



MENDOCINO FARMS  
sandwich market



# AVAILABILITY


## 3 0 3 0 S A T U R N S T R E E T

SUITE	SIZE	AVAILABILITY	NOTES	VIRTUAL TOUR
100	14,241 SF	30 days	10 offices, conference room, break room, large open area, potential for roll up door and building signage.	
200	3,623 SF	April 1, 2026	4 offices, conference room, break area and large open area.	


## 3 0 4 0 S A T U R N S T R E E T

SUITE	SIZE	AVAILABILITY	NOTES	VIRTUAL TOUR
200	8,369 SF	Vacant	6 offices, 2 conference rooms, open area and kitchen/break room.	

## 3 0 6 0 S A T U R N S T R E E T

SUITE	SIZE	AVAILABILITY	NOTES	VIRTUAL TOUR
201	6,445 SF	Vacant	Call to show.	

## 3 0 7 0 S A T U R N S T R E E T

SUITE	SIZE	AVAILABILITY	NOTES	VIRTUAL TOUR
200	5,266 SF	April 1, 2026	Double door elevator lobby identity. 5 offices, conference room, open area and kitchen/break room.	
201	2,731 SF	Vacant	Large open area, office, kitchen and storage room.	

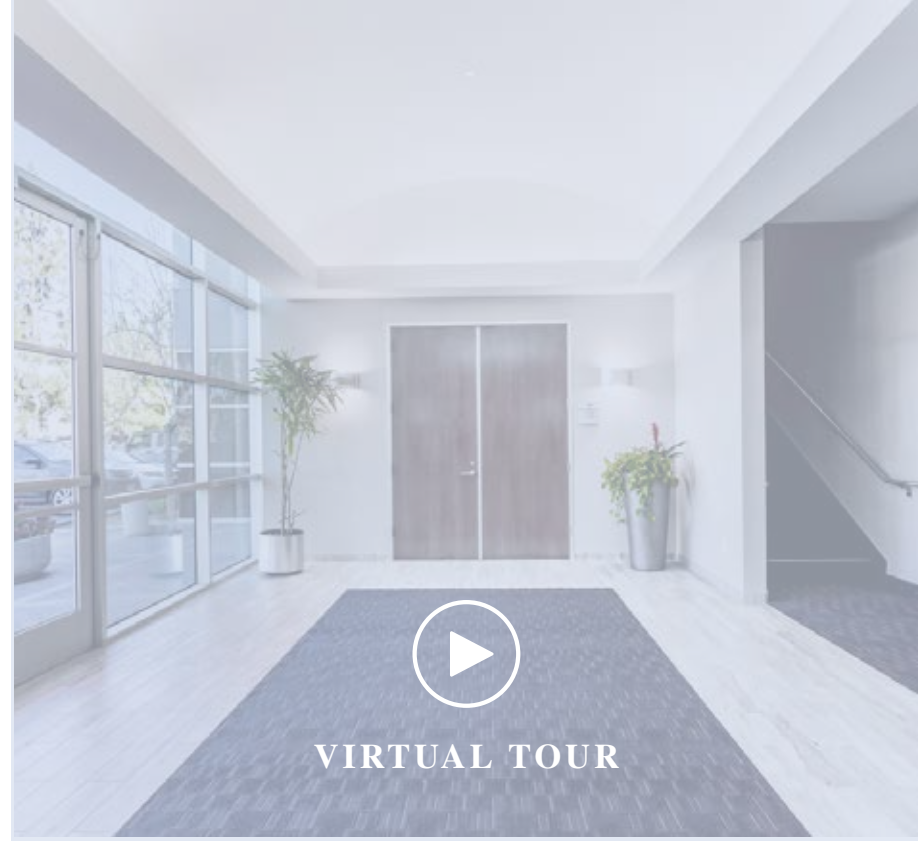
# S I T E P L A N

3010-3070 SATURN STREET, BREA CA



**BCP**  
BREA, CA

VALENCIA AVE

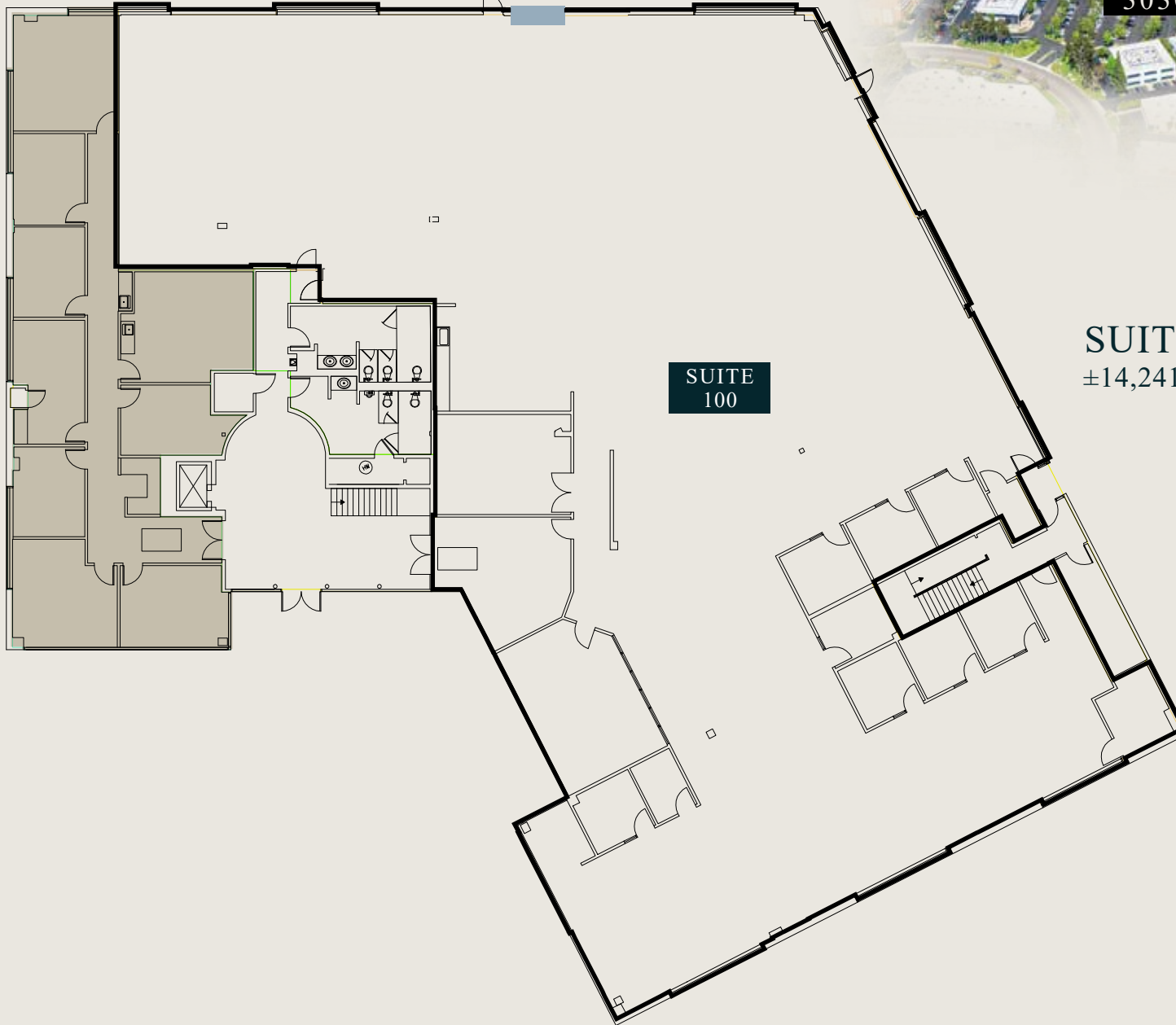


# 3 0 3 0 S A T U R N S T R E E T

Potential Roll-up Door



## 1ST FLOOR



SUITE  
100

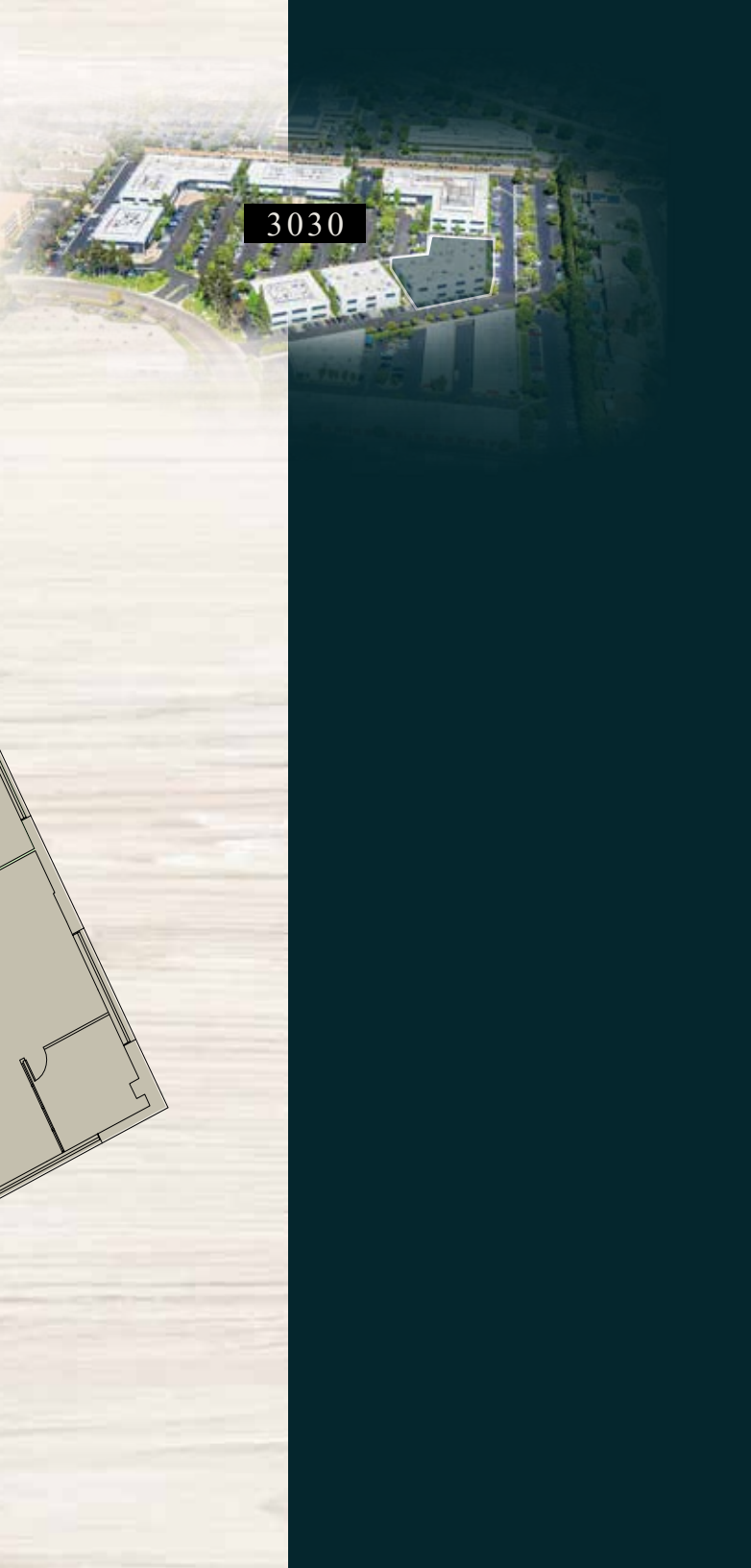
SUITE 100  
±14,241 SF

# 3 0 3 0 S A T U R N S T R E E T



SUITE  
200

SUITE 200  
± 3,623 SF





# 3 0 4 0   S A T U R N   S T R E E T



## 2ND FLOOR

SUITE 200  
±8,369 SF



SUITE 200

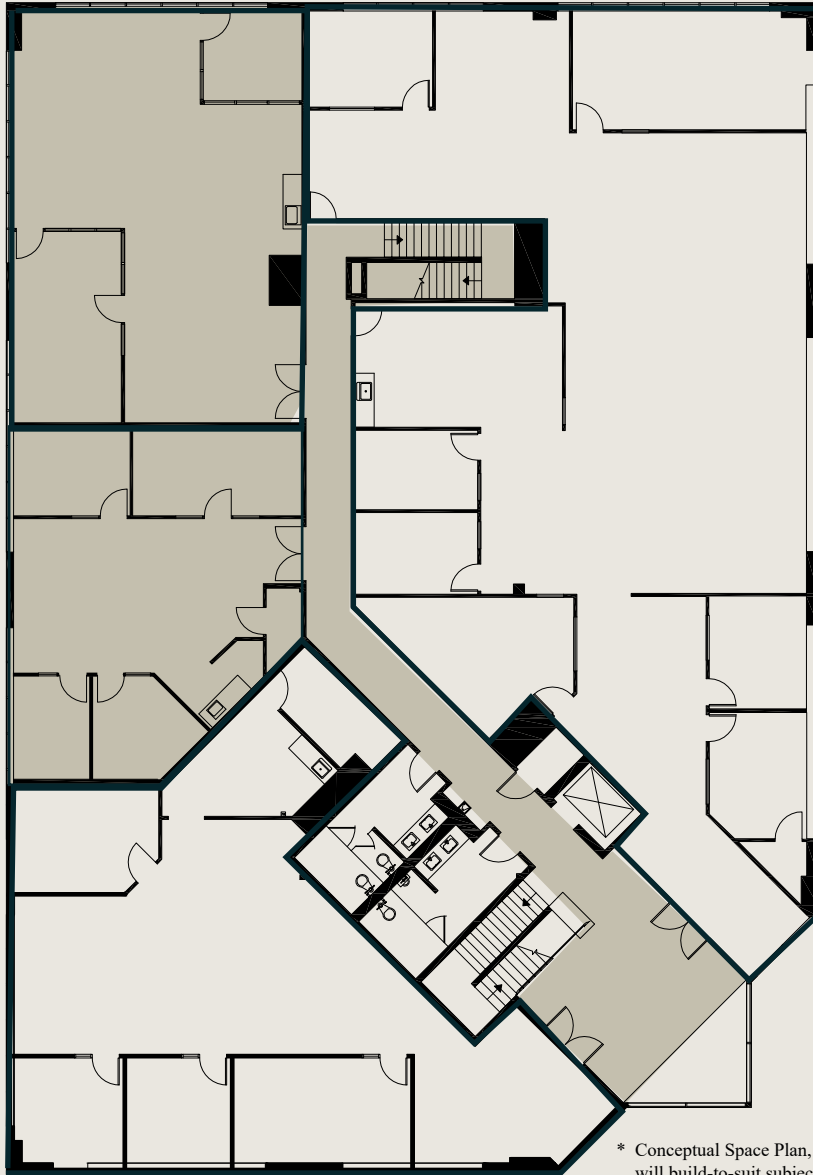
# 3 0 6 0 S A T U R N S T R E E T

SUITE 201  
±6,445 SF



2ND FLOOR

# 3 0 7 0 S A T U R N S T R E E T



SUITE  
201\*

SUITE  
200



SUITE 200  
± 5,266 SF

SUITE 201  
± 2,731 SF



VIRTUAL  
TOUR

\* Conceptual Space Plan, Landlord  
will build-to-suit subject to terms

# 2ND FLOOR

# BREA DEMOGRAPHICS



**46,485**  
Population



**\$706,565**  
Average Home Value



**33,071**  
Population with Associate's Degree



**\$121,658**  
Average Household Income



**72,714**  
Daytime Population



**4,105**  
Businesses



# MAJOR EMPLOYERS

NORDSTROM



# NEARBY AMENITIES

**Birch Hills**  
GOLF COURSE

**BREA SPORTS PARK**

**Brea Union Plaza**

**THE HOME DEPOT** **ROSS** DRESS FOR LESS **Michaels**  
**Walmart** Save money. Live better. **NORDSTROM** **1 RACK**

**Village at La Floresta**

**WHOLE FOODS MARKET** **Capital** noode bar **URBAN PLATES**  
**Orangetheory** FITNESS styled by **te**  
**MENDOCINO FARMS** sandwich market

**76**

**néktar** JUICE BAR

**Arby's**

**EXTENDED STAY AMERICA**  
**TOGO'S** GREAT SANDWICHES

**Chase Suite Hotels**

**CHASE**

**CITIZENS BUSINESS BANK**

**Imperial East Shopping**

**Starbucks**

**TRADER JOE'S**

**Albertsons**

**verizon**

**petco**

**Pollo Loco**

**Sit'n Sleep** YOUR MATTRESS SUPERSTORE

**T.J. MAXX**

**BCP**  
BREA, CA

**Starbucks**

**Shell**

BCP

BREA, CA

3010-3070 SATURN STREET, BREA CA

TAYLOR ING  
Senior Managing Director  
t 714-271-9068  
taylor.ing@nmrk.com  
CA RE Lic. #00895164

RICHARD P. SUNG  
Senior Managing Director  
t 949-608-2178  
richard.sung@nmrk.com  
CA RE Lic. #01953211



Corporate License #01355491

The information contained herein has been obtained from sources deemed reliable but has not been verified and no guarantee, warranty or representation, either express or implied, is made with respect to such information. Terms of sale or lease and availability are subject to change or withdrawal without notice.

NEWMARK