

Specifications

±8,000 SF
TOTAL BUILDING SIZE

±0.45 AC (Block 1403, Lot 14)
LOT SIZE

Banks, Restaurants, Salons, Schools,
Art Museum, Hotel, Grocery
DOWNTOWN AMENITIES

Commercial
LAND USE

\$66,129.70 (2023)
TAXES

At Bus Stop NJ Transit 11, 29
2.7 Miles to GSP Exit 148
8.7 Miles to I-78
16.2 Miles to Newark Airport
ACCESSIBILITY

For additional property information or to arrange an inspection, please contact the exclusive brokers:

Jason M. Crimmins, CCIM, SIOR
President
973.568.6611
jmcrimmins@blauberg.com

Alessandro (Alex) Conte, CCIM, SIOR
Executive Vice President
973.432.1648
aconte@blauberg.com

Peter J. Murano, Jr., SIOR
Managing Executive Director
973.214.9375
pjmurano@blauberg.com

FOR LEASE | 665 – 679 BLOOMFIELD AVENUE | MONTCLAIR, NJ

Located on Bloomfield Avenue in the heart of Montclair’s downtown district, this property boasts convenient access to all major roads and highways including Routes 3, 46, I-280 and the Garden State Parkway. With over 85 restaurants and bars, retail, entertainment and hospitality options nearby.



For additional property information or to arrange an inspection, please contact the exclusive brokers:

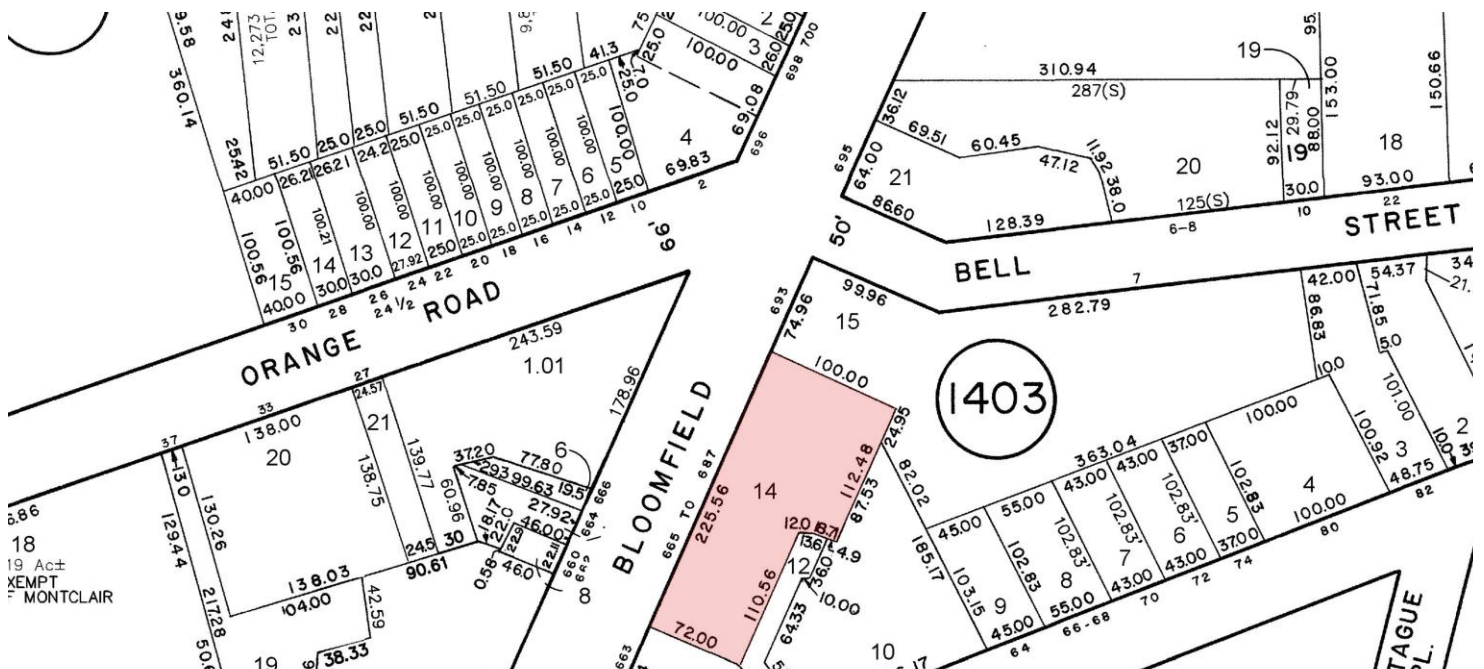
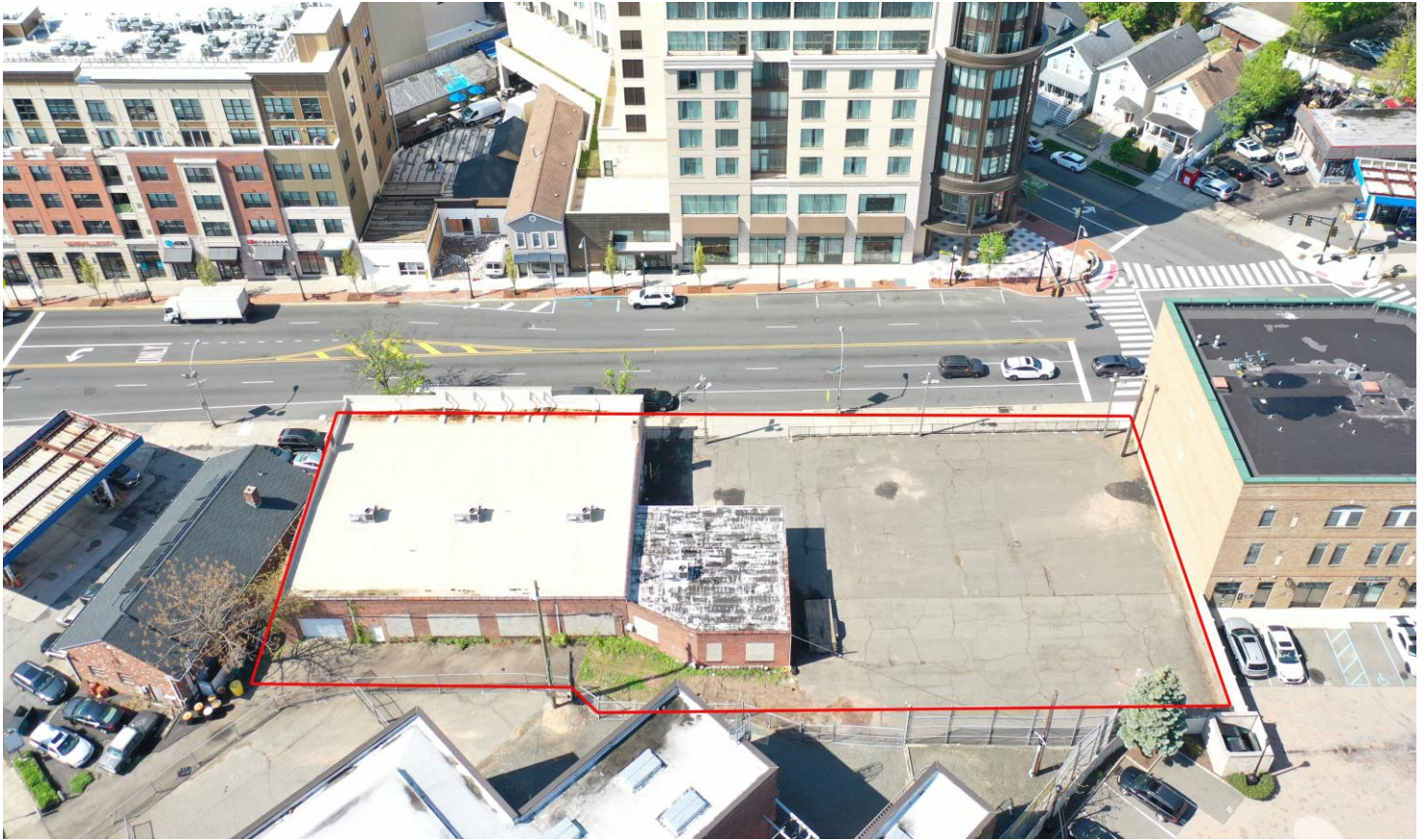
Jason M. Crimmins, CCIM, SIOR
President
973.568.6611
jmcrimmins@blauberg.com

Alessandro (Alex) Conte, CCIM, SIOR
Executive Vice President
973.432.1648
aconte@blauberg.com

Peter J. Murano, Jr., SIOR
Managing Executive Director
973.214.9375
pjmurano@blauberg.com

The information contained herein has been obtained from sources considered to be reliable, but no guarantee of its accuracy is made by this company. In addition, no representation is made respecting zoning, condition of title, dimensions, or any matters of a legal or environmental nature. Such matters should be referred to legal counsel for determination. Terms and conditions are subject to change without prior notice. Subject to errors and omissions.

FOR LEASE | 665 – 679 BLOOMFIELD AVENUE | MONTCLAIR, NJ



For additional property information or to arrange an inspection, please contact the exclusive brokers:

Jason M. Crimmins, CCIM, SIOR
 President
 973.568.6611
 jmcrimmins@blauberg.com

Alessandro (Alex) Conte, CCIM, SIOR
 Executive Vice President
 973.432.1648
 acont@blauberg.com

Peter J. Murano, Jr., SIOR
 Managing Executive Director
 973.214.9375
 pjmurano@blauberg.com

The information contained herein has been obtained from sources considered to be reliable, but no guarantee of its accuracy is made by this company. In addition, no representation is made respecting zoning, condition of title, dimensions, or any matters of a legal or environmental nature. Such matters should be referred to legal counsel for determination. Terms and conditions are subject to change without prior notice. Subject to errors and omissions.



5 MILES

- Total Population: 565,781
- Households: 213,673
- Median Household Income: \$110,324
- Average Household Size: 2.6
- Transportation to Work: 298,386
- Labor Force: 455,875

10 MILES

- Total Population: 1.87M
- Households: 681,983
- Median Household Income: \$102,369
- Average Household Size: 2.7
- Transportation to Work: 973,350
- Labor Force: 1.5M

15 MILES

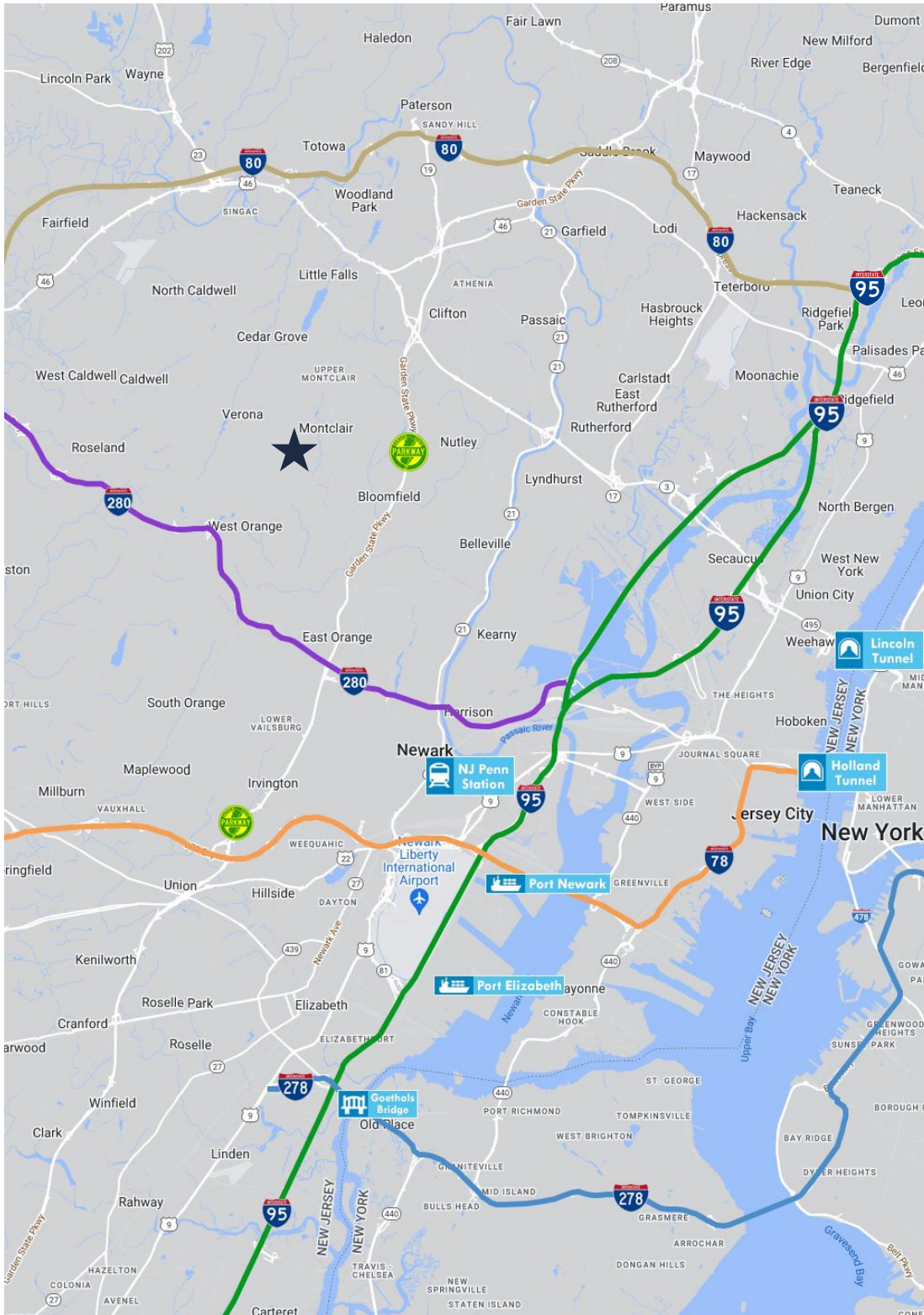
- Total Population: 5.23M
- Households: 2.16M
- Median Household Income: \$121,172
- Average Household Size: 2.4
- Transportation to Work: 2.86M
- Labor Force: 4.34M

For additional property information or to arrange an inspection, please contact the exclusive brokers:

Jason M. Crimmins, CCIM, SIOR
President
 973.568.6611
 jmcrimmins@blauberg.com

Alessandro (Alex) Conte, CCIM, SIOR
Executive Vice President
 973.432.1648
 acont@blauberg.com

Peter J. Murano, Jr., SIOR
Managing Executive Director
 973.214.9375
 pjmurano@blauberg.com



ACCESSIBILITY



2.7 MI
GSP Exit 148



3.7 MI
I-280



8.7 MI
I-78



10.4 MI
Penn Station



11.1 MI
I-95 Exit 16W



16.2 MI
Newark Airport



16.4 MI
Lincoln Tunnel



16.4 MI
Ports Newark & Elizabeth



17 MI
Holland Tunnel



19.9 MI
George Wash. Bridge

For additional property information or to arrange an inspection, please contact the exclusive brokers:

Jason M. Crimmins, CCIM, SIOR
President
973.568.6611
jmcrimmins@blauberg.com

Alessandro (Alex) Conte, CCIM, SIOR
Executive Vice President
973.432.1648
aconte@blauberg.com

Peter J. Murano, Jr., SIOR
Managing Executive Director
973.214.9375
pjmurano@blauberg.com