

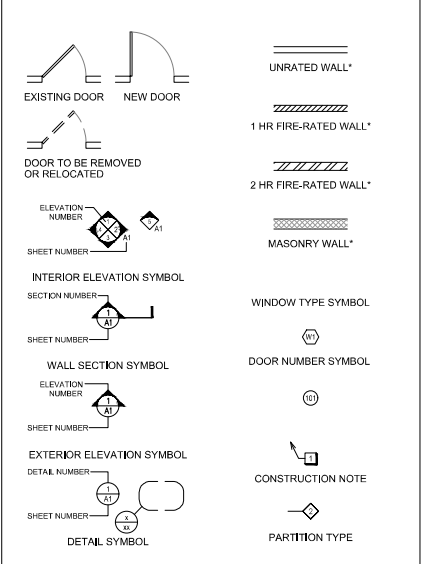
### LIST OF ABBREVIATIONS

<b>A</b> AB ANCHOR BOLT	<b>G</b> GA GAGE (GAUGE)	<b>R</b> R RISER
<b>ABC</b> AGGREGATE BASE COURSE	<b>GAL</b> GALLONS	<b>RAD</b> RETURN AIR
<b>AC</b> ASPHALTIC CONCRETE	<b>GALV</b> GALVANIZED	<b>RBP</b> RETURN AIR GRILLE
<b>ACR</b> AIR CONDITIONING	<b>GAR</b> GARAGE	<b>RB</b> RUBBER BASE
<b>ACT</b> ACTUATOR	<b>GC</b> GENERAL CONTRACTOR	<b>RC</b> REFLECTED CEILING PLAN
<b>ADH</b> ADHESIVE	<b>GD</b> GROUND	<b>RD</b> ROOF DRAIN
<b>ADJ</b> ADJUSTABLE	<b>GF</b> GROUND FAULT INTERRUPTER	<b>REF</b> REFERENCE
<b>ADN</b> AERATION	<b>GL</b> GLASS	<b>REG</b> REGISTER
<b>ADVF</b> ABOVE FINISH FLOOR	<b>GLB</b> GLUE LAMINATED BEAM	<b>RENF</b> REINFORCING
<b>AGGR</b> AGGREGATE	<b>GND</b> GROUND	<b>REQD</b> REQUIRED
<b>AGU</b> AIR HANDLING UNIT	<b>GRDW</b> GYPSPUM DRYWALL	<b>REMT</b> REQUIREMENT
<b>ALT</b> ALTERNATE	<b>GR</b> GROUT (REVISION)	<b>REV</b> REVISION
<b>ALUM</b> ALUMINUM	<b>GRM</b> GROUT (PER MINUTE)	<b>RFR</b> REFRIGERATOR
<b>ANOD</b> ANODIZED	<b>GR</b> GREATROOM	<b>RFR</b> RAFTER
<b>ANSI</b> AMERICAN NATIONAL STANDARDS INSTITUTE		<b>RH</b> RIGHT HAND
<b>AP</b> ACCESS PANEL		<b>RL</b> ROOF LEADER
<b>APPL</b> APPLICABLE		<b>RM</b> ROOM
<b>APPROX</b> APPROXIMATE		<b>RO</b> ROUGH OPENING
<b>ARCH</b> ARCHITECTURAL		<b>ROOF</b> ROOFING
<b>ASPH</b> ASPHALT		<b>ROW</b> RIGHT OF WAY
<b>AUTO</b> AUTOMATIC		<b>RPZ</b> REDUCED PRESSURE ZONE
<b>AUT</b> AUTOBUSUAL		<b>RTU</b> ROOF TOP UNIT
<b>AVNG</b> AVENUE		<b>RFR</b> RAFTER
<b>BATH</b> BATHROOM		
<b>BS</b> BALL BEARING		
<b>BS</b> BOARD		
<b>BSFT</b> BREAKFAST ROOM		
<b>BSF</b> BELOW FINISH FLOOR		
<b>BFF</b> BACK FLOW PREVENTOR		
<b>BLDG</b> BUILDING		
<b>BLCK</b> BLOCK		
<b>BLKG</b> BLOCKING		
<b>BLM</b> BLIND		
<b>BOC</b> BOTTOM OF CURB		
<b>BOS</b> BOTTOM OF STEEL		
<b>BSL</b> BEDROOM		
<b>BRDD</b> BREACHING		
<b>BRK</b> BEARING		
<b>BRK</b> BRICK		
<b>BRZ</b> BRONZE		
<b>BSMT</b> BASEMENT		
<b>BTWN</b> BETWEEN		
<b>BU</b> BUILT UP		
<b>CAB</b> CABINET		
<b>CBS</b> CATCH BASIN		
<b>CEM</b> CEMENT		
<b>CF</b> CUBIC FOOT		
<b>CFM</b> CUBIC FEET PER MINUTE		
<b>CFM2</b> CFM FORMER METAL		
<b>CI</b> CAST IRON		
<b>QIP</b> CAST IN PLACE		
<b>QIR</b> QIR		
<b>CIRC</b> CIRCUMFERENCE		
<b>CJ</b> CONTROL JOINT		
<b>CL</b> CENTER LINE		
<b>CLC</b> CEILING		
<b>CLX</b> CALKING		
<b>CLR</b> CLEARANCE		
<b>CLST</b> CLOSET		
<b>CMU</b> CONCRETE MASONRY UNIT		
<b>CNTR</b> COUNTER		
<b>CND</b> CLEAN OUT		
<b>COL</b> COLUMN		
<b>CONC</b> CONCRETE		
<b>COND</b> CONDENSATE		
<b>CONP</b> CONCRETE		
<b>CONN</b> CONNECTION		
<b>CONSTR</b> CONSTRUCTION		
<b>CONT</b> CONTINUOUS		
<b>CONTR</b> CONTRACTOR		
<b>COOR</b> COORDINATE		
<b>CORR</b> CORRIDOR		
<b>CS</b> CURB		
<b>CBS</b> COURSE		
<b>CSMT</b> CASEMENT		
<b>CT</b> CERAMIC TILE		
<b>CT</b> CENTER		
<b>CUH</b> CABINET UNIT HEATER		
<b>CV</b> COLD WATER		
<b>CU</b> CURB YARD		
<b>DBL</b> DOUBLE		
<b>DET</b> DETAIL		
<b>DG</b> DEGREE		
<b>DF</b> DRINKING FOUNTAIN		
<b>DK</b> DRINKING KITCHEN		
<b>DH</b> DOUBLE HUNG		
<b>DMTR</b> DIMETER		
<b>DIFF</b> DIFFUSER		
<b>DM</b> DIMENSION		
<b>DM</b> DIMENSION ROOM		
<b>DL</b> DEAD LOAD		
<b>DN</b> DOWN		
<b>DPR</b> DAMPER		
<b>DR</b> DOOR		
<b>DS</b> DOWN SPOUT		
<b>DW</b> DRAINWASHER		
<b>DWG</b> DRAWING		
<b>DWH</b> DOWN WATER HEATER		
<b>DWR</b> DRAWER		
<b>E</b> EAST		
<b>EA</b> EACH		
<b>EC</b> ELECTRICAL CONTRACTOR		
<b>EF</b> EXHAUST FAN		
<b>EMS</b> EXTERIOR INSULATION & FRESH SYSTEM		
<b>EJ</b> EXPANSION JOINT		
<b>EL</b> ELEVATOR		
<b>ELEC</b> ELECTRICAL		
<b>ELEV</b> ELEVATION		
<b>EMER</b> EMERGENCY		
<b>ENCL</b> ENCLOSURE		
<b>ENGR</b> ENGINEER		
<b>ENT</b> ENTRANCE		
<b>EP</b> ELECTRICAL PANEL		
<b>EPY</b> EPOXY PAINT		
<b>EQ</b> EQUAL		
<b>EQIP</b> EQUIPMENT		
<b>ESC</b> ESCALATOR		
<b>EW</b> EXISTING TO REMAIN		
<b>EW</b> EACH WAY		
<b>EWG</b> ELECTRIC WATER COOLER		
<b>EXH</b> EXHAUST		
<b>EXIST</b> EXISTING		
<b>EXP</b> EXPANSION		
<b>EXT</b> EXTERIOR		
<b>F</b> FIRE		
<b>FA</b> FIRE ALARM		
<b>FBI</b> FIRE BRIGADE		
<b>FBO</b> FINISHED BY OTHERS		
<b>FCO</b> FLOOR CLEAN OUT		
<b>FD</b> FLOOR DRAIN		
<b>FDMPP</b> FIRE DAMPER		
<b>FE</b> FIRE EXTINGUISHER		
<b>FF</b> FINISHED FLOOR		
<b>FN</b> FRESH		
<b>FLSH</b> FLASHING		
<b>FLR</b> FLOOR		
<b>FNDR</b> FOUNDATION		
<b>FOC</b> FACE OF CONCRETE		
<b>FOF</b> FACE OF FINISH		
<b>FOM</b> FACE OF MASONRY		
<b>FOS</b> FACE OF STUD		
<b>FBR</b> FIRE BRICK		
<b>FFM</b> FEET PER MINUTE		
<b>FFS</b> FEET PER SECOND		
<b>FT</b> FOOT (FEET)		
<b>FOOTING</b>		
<b>FTR</b> FIRE-TREATED		
<b>FURR</b> FURRING		
<b>H</b> HIGH		
<b>HB</b> HOSE BIBB		
<b>HC</b> HOLLOW CORE		
<b>HOP</b> HANDICAPPED		
<b>HD</b> HEAT DETECTOR		
<b>HDR</b> HEADER		
<b>HD RL</b> HAND RAIL		
<b>HDW</b> HARDWARE		
<b>HFR</b> HEM FIR		
<b>HM</b> HOLLOW METAL		
<b>HOR</b> HORIZONTAL		
<b>HP</b> HOSE POWER		
<b>HR</b> HOUR		
<b>HT</b> HEIGHT		
<b>HTG</b> HEATING		
<b>HVAC</b> HEATING/VENTILATING/ AIR CONDITIONING		
<b>I</b> INCH		
<b>HW</b> HOT WATER		
<b>HWWD</b> HARDWOOD		
<b>WHW</b> HOT WATER HEATER		
<b>HWS</b> HOT WATER SUPPLY		
<b>HWTR</b> HOT WATER RETURN		
<b>HWWD</b> HANDWRIBED SMOKE DETECTOR		
<b>HYD</b> HYDRANT		
<b>ID</b> INSIDE DIAMETER		
<b>IN</b> INCH		
<b>INSUL</b> INSULATION		
<b>INT</b> INTERIOR		
<b>INVT</b> INVERT		
<b>J</b> JAN JANITOR'S CLOSET		
<b>JBOX</b> JUNCTION BOX		
<b>JST</b> JOIST		
<b>JT</b> JOINT		
<b>K</b> KITCHEN		
<b>KC</b> KNOCKOUT		
<b>KP</b> KICK PLATE		
<b>KW</b> KILN DRY		
<b>L</b> LABORATORY		
<b>LAM</b> LAMINATED		
<b>LAV</b> LAVATORY		
<b>LBS</b> POUNDS		
<b>LC</b> LINEN CLOSET		
<b>LGMP</b> LIGHT GAGE MTL. FRAMING		
<b>LH</b> LEFT HAND		
<b>LKR</b> LOCKERS		
<b>LLH</b> LONG LEG HORIZONTAL		
<b>LLV</b> LONG LEG VERTICAL		
<b>LND</b> LAUNDRY		
<b>LR</b> LIVING ROOM		
<b>LT</b> LIGHT		
<b>LTL</b> LIMIT LINE		
<b>LV</b> LUVYER		
<b>LW</b> LIGHTWEIGHT		
<b>M</b> MASONRY		
<b>MAT</b> MATERIAL		
<b>MAX</b> MAXIMUM		
<b>MB</b> MASTER BATHROOM		
<b>MBR</b> MASTER BEDROOM		
<b>MC</b> MECHANICAL CONTRACTOR		
<b>MECH</b> MECHANICAL		
<b>MEMB</b> MEMBRANE		
<b>MAN</b> MANUFACTURE (REER)		
<b>MIN</b> MINIMUM		
<b>MNH</b> MANHOLE		
<b>MISC</b> MISCELLANEOUS		
<b>MOR</b> MASONRY OPENING		
<b>MDO</b> MODULAR		
<b>MOR</b> MOISTURE RESISTANT		
<b>MTO</b> MOUNTING		
<b>ME</b> METAL		
<b>MIL</b> MILLION		
<b>N</b> NORTH		
<b>NAT</b> NATURAL GAS		
<b>NEC</b> NECESSARY		
<b>NG</b> NATURAL GAS		
<b>NC</b> NOT IN CONTRACT		
<b>NO.</b> NUMBER		
<b>NOM</b> NOMINAL		
<b>NTS</b> NOT TO SCALE		
<b>OA</b> OUTSIDE AIR		
<b>OC</b> ON CENTER		
<b>OFF</b> OFFICE		
<b>OH</b> OVERHEAD		
<b>CHD</b> OVERHEAD CORD		
<b>OSP</b> OPPOSITE		
<b>ORND</b> ORIENTED STRAND BOARD		
<b>OVRA</b> OVERALL		
<b>OVDR</b> OVERDRAINING		
<b>OZ</b> OUNCE		
<b>P</b> PARALLEL		
<b>PART</b> PARTITION		
<b>PBD</b> PARTIALLY BOARD		
<b>PBCAST</b>		
<b>PCF</b> POUNDS PER CUBIC FOOT		
<b>PCT</b>		
<b>PL</b> PROPERTY LINE		
<b>PLA</b> PLASTER (LAMINATED)		
<b>PLAS</b> PLASTER		
<b>PND</b> POUNDS PER LINEAL FOOT		
<b>PLF</b> POUNDS PER LINEAL FOOT		
<b>PLY</b> PLYWOOD		
<b>PNT</b> PAINT		
<b>PP</b> POWER POLE		
<b>PR</b> PREPARED/REBARRETTED		
<b>PRV</b> PRESSURE REDUCING VALVE		
<b>PRD</b> FEEDTAL BIN		
<b>PSF</b> POUNDS PER SQUARE FOOT		
<b>PSI</b> POUNDS PER SQUARE INCH		
<b>PTD</b> PAPER TOWEL DISPENSER		
<b>PTM</b> PATCH TO MATCH		
<b>PTM</b> PATCH TO MATCH		
<b>PTWO</b> PRESSURE TREATED WOOD		
<b>PVC</b> POLYVINYL CHLORIDE		
<b>PWMT</b> PAVEMENT		
<b>PWR</b> POWER ROOM		
<b>Q</b> QUARRY TILE		

### RENDERING

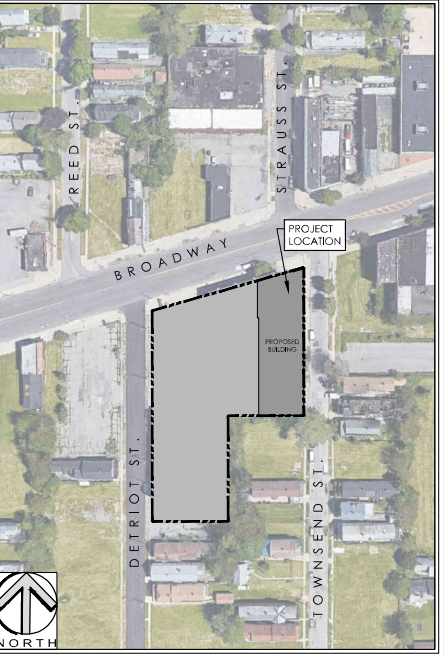


### SYMBOL LEGEND



\* REFER TO PARTITION WALL TYPES - A8,0

### SITE LOCATION MAP



### BUILDING CODE ANALYSIS

BUILDING CODE:	2020 NEW YORK STATE BUILDING CODE
FIRE CODE:	2020 NEW YORK STATE FIRE CODE
PLUMBING CODE:	2020 NEW YORK STATE PLUMBING CODE
ACCESSIBILITY:	2017 ICC/ANSI A117.1
CONSTRUCTION TYPE:	IIA
CLASSIFICATION OF WORK:	NEW CONSTRUCTION
OCCUPANCY CLASSIFICATION:	BUILDING SHELL
BUILDING FLOOR AREA:	16,162 S.F.
FIRE AREA:	
BUILDING FIRE AREA ACTUAL:	
ACTUAL BUILDING HEIGHT:	(1) STORY / 20'-0"
FIRE PROTECTION/SPRINKLER:	T.B.D.
TRAVEL DISTANCE TO EXIT (ALLOWABLE):	T.B.D.
TRAVEL DISTANCE TO EXIT (ACTUAL):	T.B.D.
OCCUPANT LOAD:	T.B.D.
EGRESS WIDTH REQ'D:	T.B.D.
EGRESS WIDTH ACTUAL:	T.B.D.
INCIDENTAL USE SEPARATION:	T.B.D.
ACCESSORY USE SEPARATION:	T.B.D.
OCCUPANCY SEPARATION:	T.B.D.

### INDEX OF DRAWINGS

TYPE	DWG. #	DRAWING NAME	REV.	DATE
GENERAL	G100	COVER SHEET		
CIVIL	C100	EXISTING SITE SURVEY		
	C101	PROPOSED SITE / LANDSCAPE PLAN		
	C102	SITE DETAILS		
	C104	LANDSCAPE DETAILS		
	C105	BIORETENTION PLAN / DETAILS		
	C200	GRADING PLAN		
	C300	STORM DRAINAGE PLAN		
	C400	UTILITY PLAN		
ARCHITECTURAL	A101	FLOOR PLAN (W/ ROUGH MEP)		
	A102	ROOF PLAN		
	A200	EXTERIOR ELEVATIONS		
	A301	WALL SECTIONS		
	A302	WALL SECTIONS CONT'D		
	A600	DOOR, STOREFRONT ELEVATIONS		
STRUCTURAL	S000	STRUCTURAL NOTES		
	S100	FOUNDATION PLAN		
	S101	ROOF FRAMING PLAN		
	S500	STRUCTURAL FOUNDATION DETAILS		
	S501	STRUCTURAL STEEL DETAILS		

NO.	DATE	DESCRIPTION	REVISIONS
1	10/27/22	LANDSCAPE REVISIONS	



PROJECT NO: 4485  
 DATE: 10/27/22  
 DECKED BY:  
 DRAWN BY: PDS  
 CHECKED BY:  
 ALL DIMENSIONS SHALL BE IN UNITS OF FEET AND INCHES UNLESS OTHERWISE SPECIFIED.

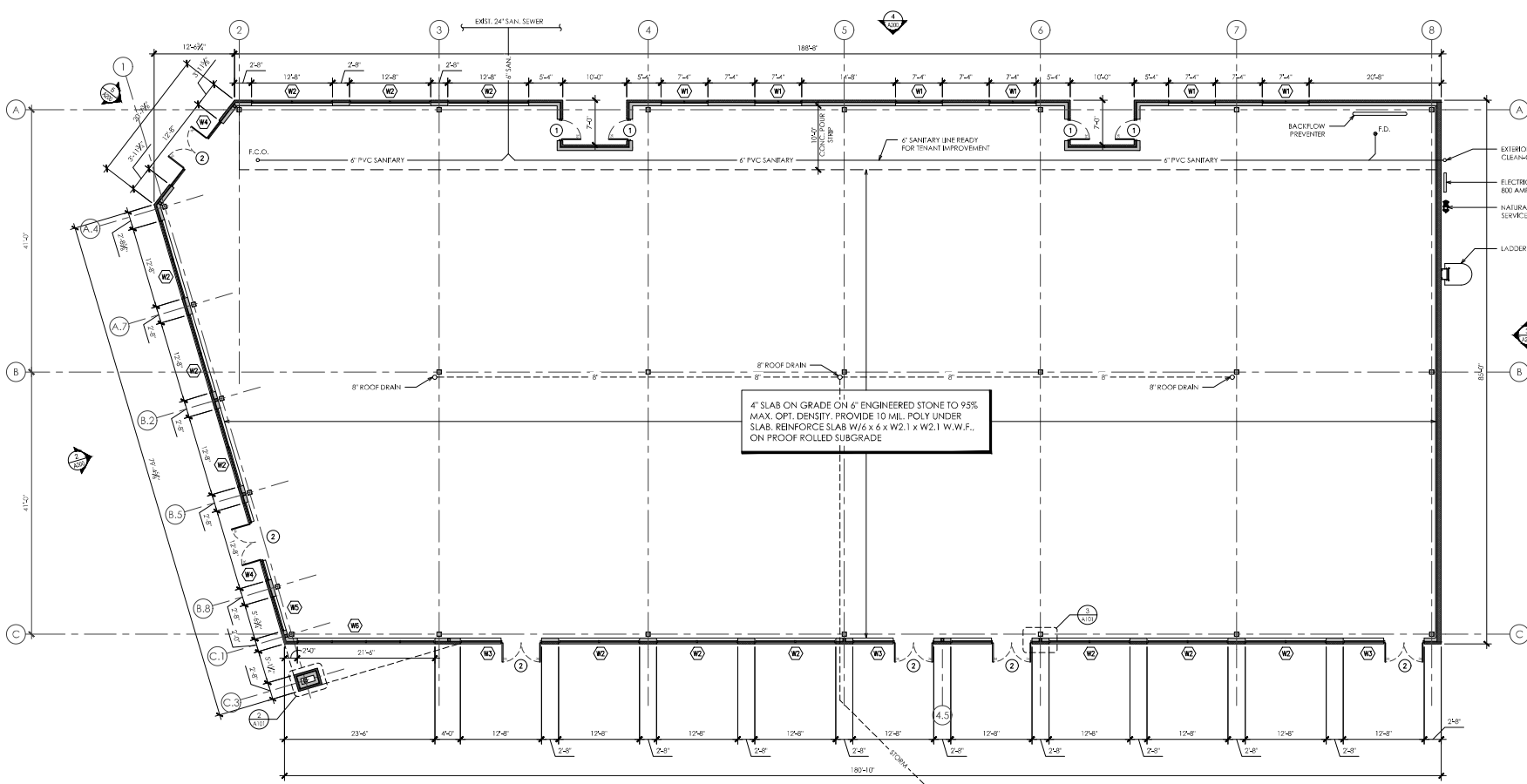
JAMES ALLEN RUMSEY ARCHITECT  
 5729 EAST RIVER ROAD  
 GRAND ISLAND, NY 14072

4485

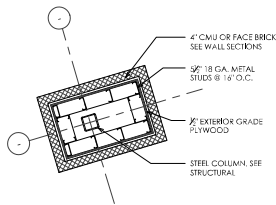
COVER SHEET  
 BUILDING SHELL  
 881 BROADWAY  
 BUFFALO, NEW YORK 14212

DATE: 09/20/2022

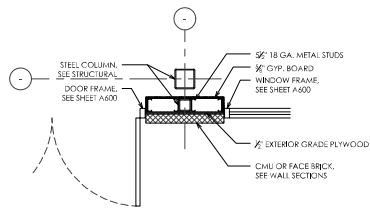
DRAWING NO:  
**G100**



FLOOR PLAN  
SCALE: 1/8" = 1'-0"



ENLARGED PIER  
SCALE: 1/2" = 1'-0"

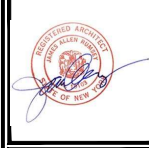


ENLARGED PIER  
SCALE: 1/2" = 1'-0"

NOTES:

- CONTRACTOR SHALL VERIFY THAT ALL FOUNDATION SYSTEMS REST ON 95% COMPACTED BASE AND SUBSURFACE.

NO.	DATE	REVISIONS	DESCRIPTION



PROJECT NO. 4485  
DATE: 06/18/2021  
DESIGNED BY: PDS  
DRAWN BY: PDS  
CHECKED BY: PDS

JAMES ALLEN RUMSEY  
ARCHITECT  
5729 EAST RIVER ROAD  
GRAND ISLAND, NY 14072

DRAWN BY: PDS  
CHECKED BY: PDS  
DATE: 06/18/2021

4485

FLOOR PLAN (W/ ROUGH MEP)  
BUILDING SHELL  
881 BROADWAY  
BUFFALO, NEW YORK 14212

DATE: 8/18/2021

DRAWING NO. A101