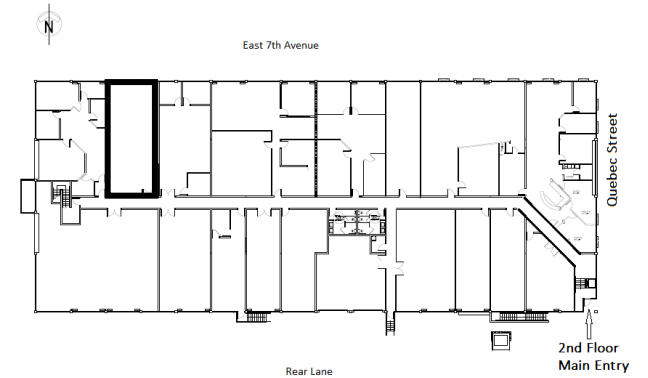
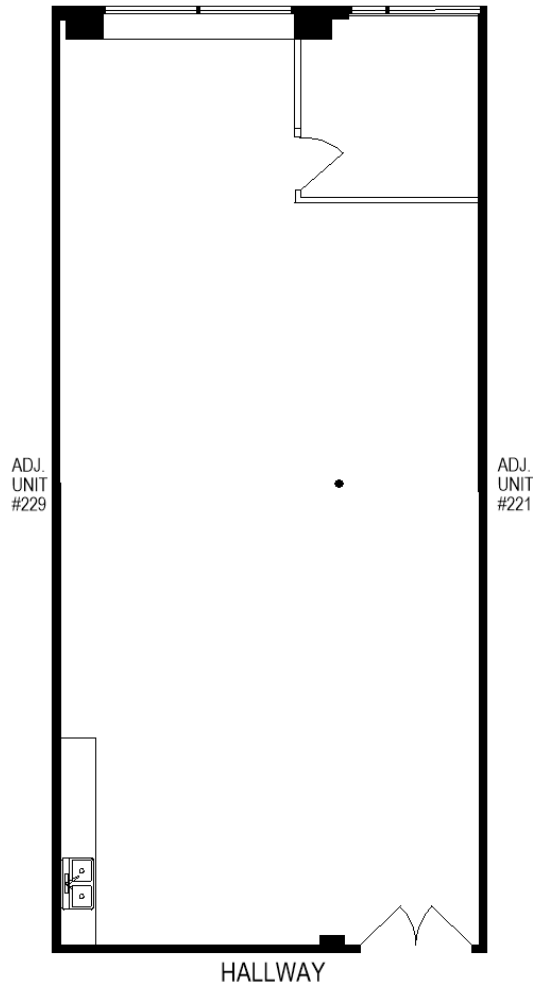
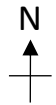


2323 Quebec Street, Vancouver, BC



Suite 225 1,324 square feet

Description: Miscellaneous products manufacturing use. North facing suite improved with one office, open space, and sink.

This is a representation for marketing purposes only and should not be used for measurements of any kind. This drawing is not to scale.

TPMG CAPITAL

Real Estate Acquisition
Management
Leasing