

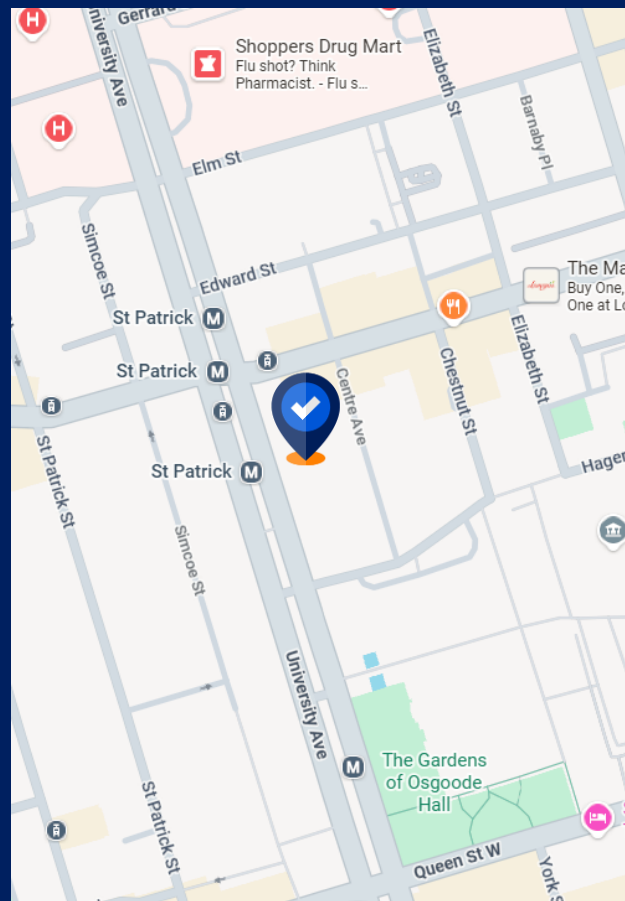
Sublease Available

Space Profile

Premises	Suite 2110
Total Rentable Area	6,260 SF Consider Demising to Approximately 4,460 SF
Net Rent	Contact Agent
Additional Rent	\$22.00 (2026 est)
Term	March 31, 2032
Availability	60 Days

Features

- Bright side-core space with lots of windows
- Efficient layout with good mix of open and office
- Reception area, spacious kitchenette, boardroom, and breakout rooms



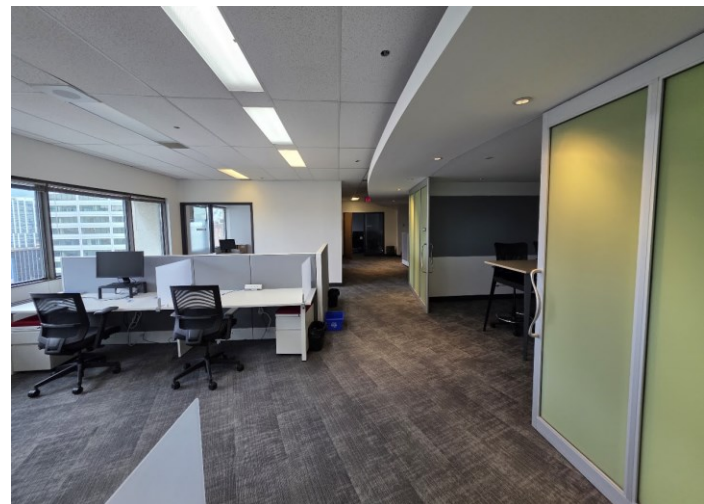
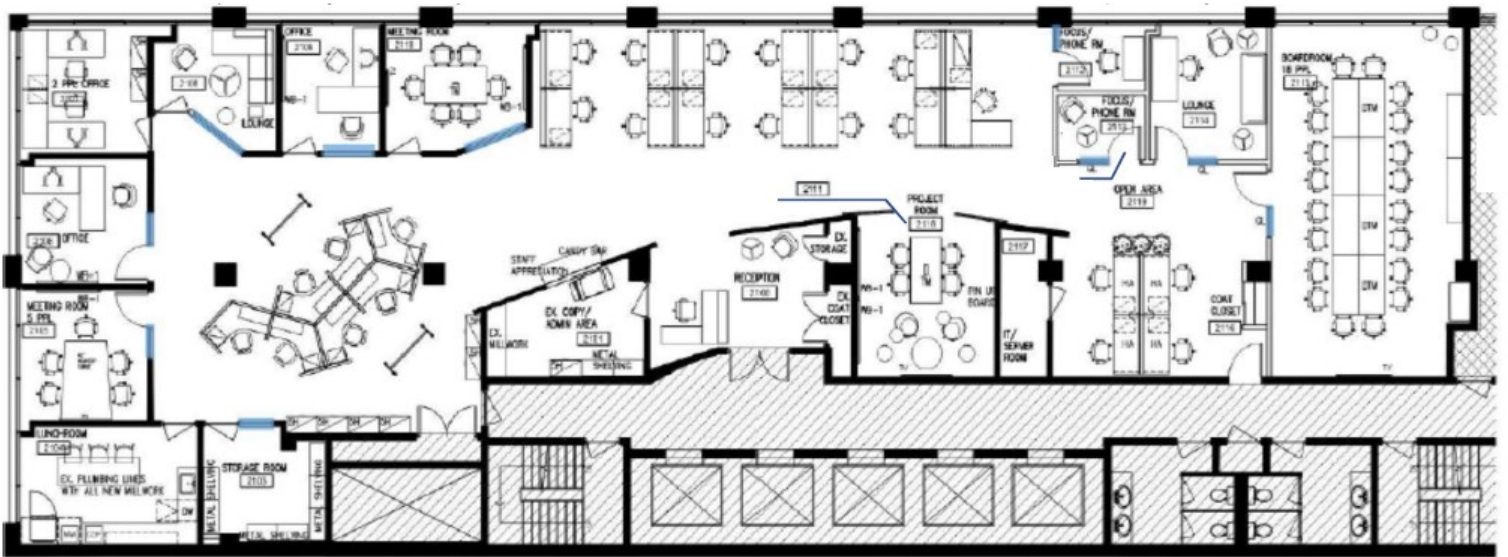
Jamie Grossman
Principal,
Broker
416.402.1430
jgrossman@cresa.com



Jeff Good
Principal,
Sales Representative
416.807.8200
jgood@cresa.com

Even though obtained from sources deemed reliable, no warranty or representation, express or implied, is made as to the accuracy of the information herein, and it is subject to errors, omissions, change of price, rental or other conditions, withdrawal without notice, and to any special listing conditions imposed by our principals.

439 University Avenue - Toronto, ON



Jamie Grossman
Principal, Broker
416.402.1430
jgrossman@cresa.com



Jeff Good
Principal,
Sales Representative
416.807.8200
jgood@cresa.com

cresa