



For lease

3609 N 15th St, Tampa, FL 33605

6,042 SF Industrial Food Processing Facility | Cold Storage
0.39 AC | Ybor City / East Tampa



3609 N 15th St, Tampa

Highlights

Available Immediately

Total SF 6,042 SF

Lot Size 0.39 AC

Site Features

- 3,426 SF commercial kitchen space
- 2,616 SF distribution warehouse
- ±550 SF walk-in freezer/refrigerator space
- High-traffic N 15th St location

Zoning CI (Commercial Industrial)

Year Built 1947 | 2002 Effective Date

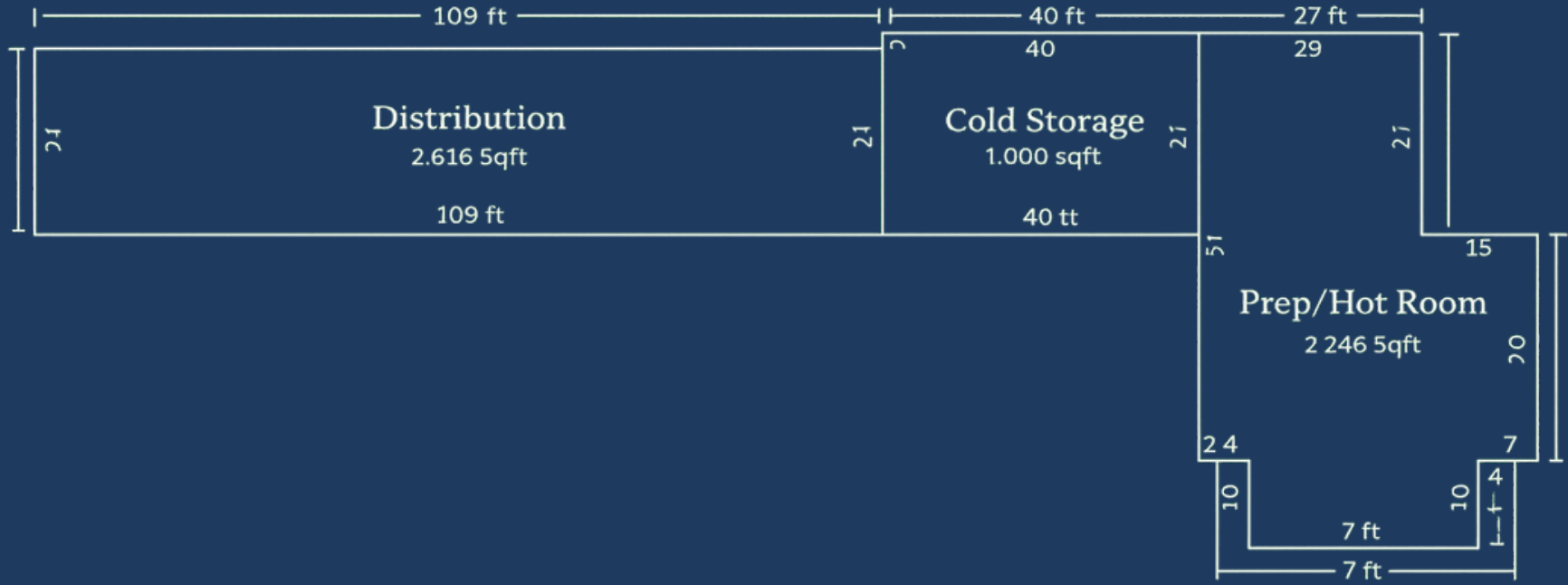
Construction Metal and Block

Features

- Three (3) bathrooms | private offices | security system
- Three (3) 10' roll-up doors | conference room
- Updated A/C | plumbing | electrical | floor | parking lot

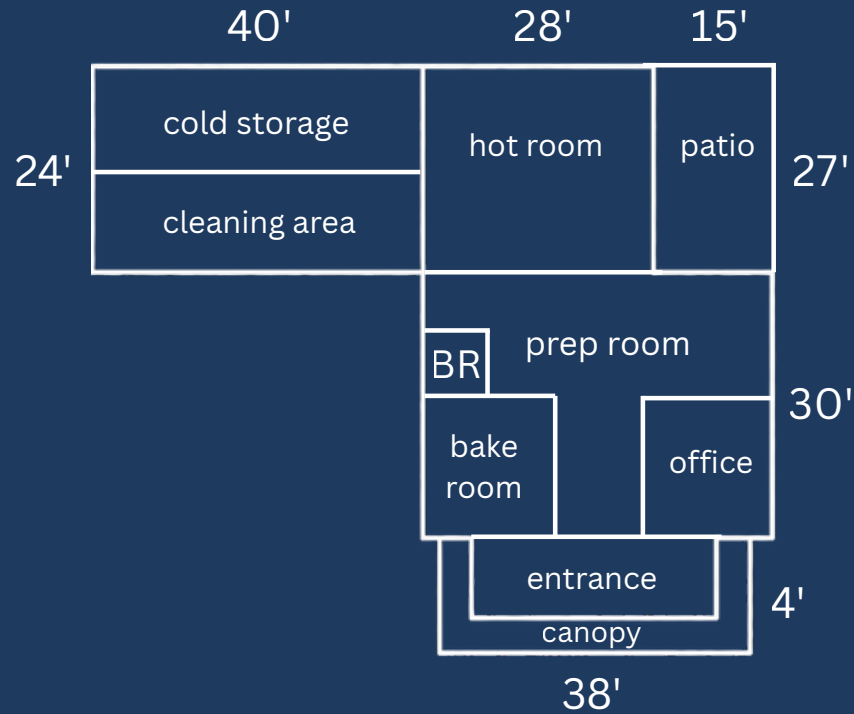


Floor Plan



Floor Plan - Commercial Kitchen

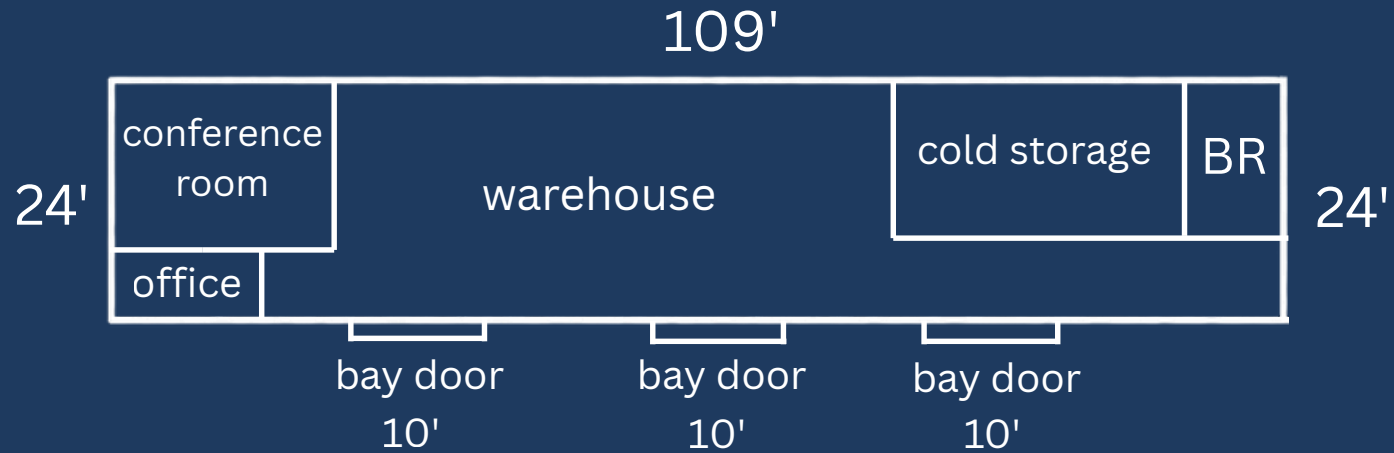
Total Square Feet: 3,411



3609 N 15th St, Tampa

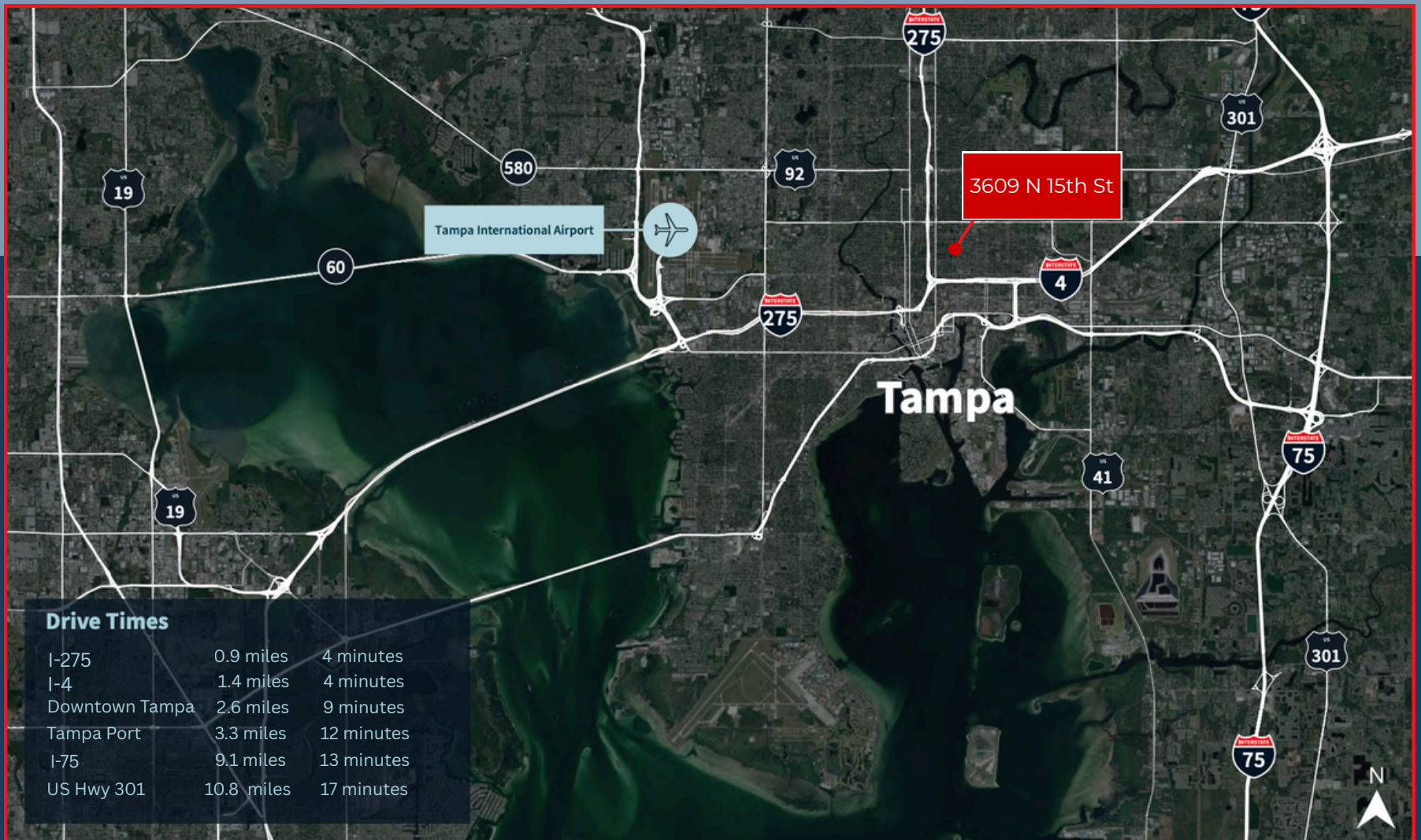
Floor Plan - Warehouse

Total Square Feet: 2,616



3609 N 15th St, Tampa

Location Map



THE EXIT STRATEGY CO

AXISTEAM

Contact:

Alexander Poplawski

Associate

941-806-8432

Alex@axis.deals

Although information has been obtained from sources deemed reliable, no guarantees, warranties or representations, express or implied, are made as to the completeness or accuracy of the information contained herein. Any projections, opinions, assumptions or estimates used are for example only. There may be differences between projected and actual results, and those differences may be material.

