



Professional office space in Guelph's south end

Mason Sinkeldam
Sales Representative
+1 226 366 9070
mason.sinkeldam@avisonyoung.com

Chris Valeriote
Sales Representative, Principal
+1 226 366 9014
chris.valeriote@avisonyoung.com

Office for lease | 920 Edinburgh Road S, Guelph

Property details

Discover approximately 750 sf of professional office space available for lease in a highly accessible and sought-after location in Guelph's south end. This well-maintained unit offers **four** dedicated parking spots, making it convenient for staff and visitors alike.

Situated near major roadways, everyday amenities, and beautiful nearby trails, this location offers convenient access for business looking to establish or grow their presence.



750 sf
Unit size



R3A-18
Zoning



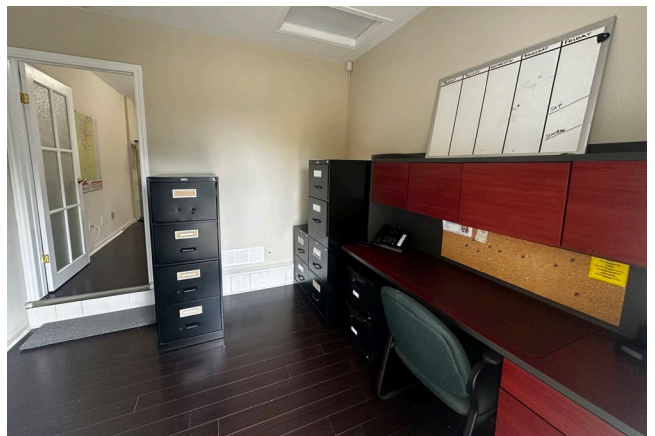
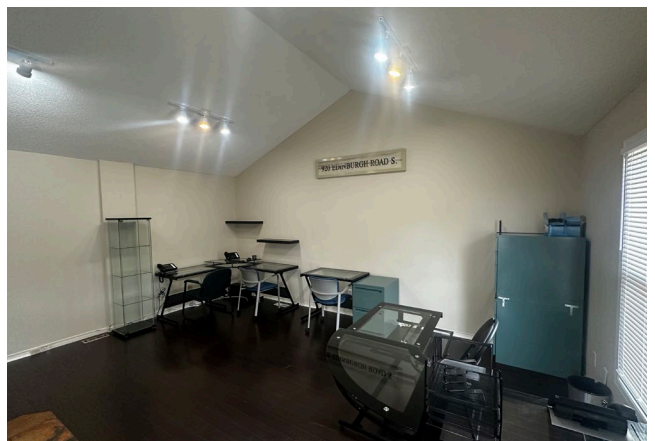
Four dedicated spots
Available from 8am-8pm



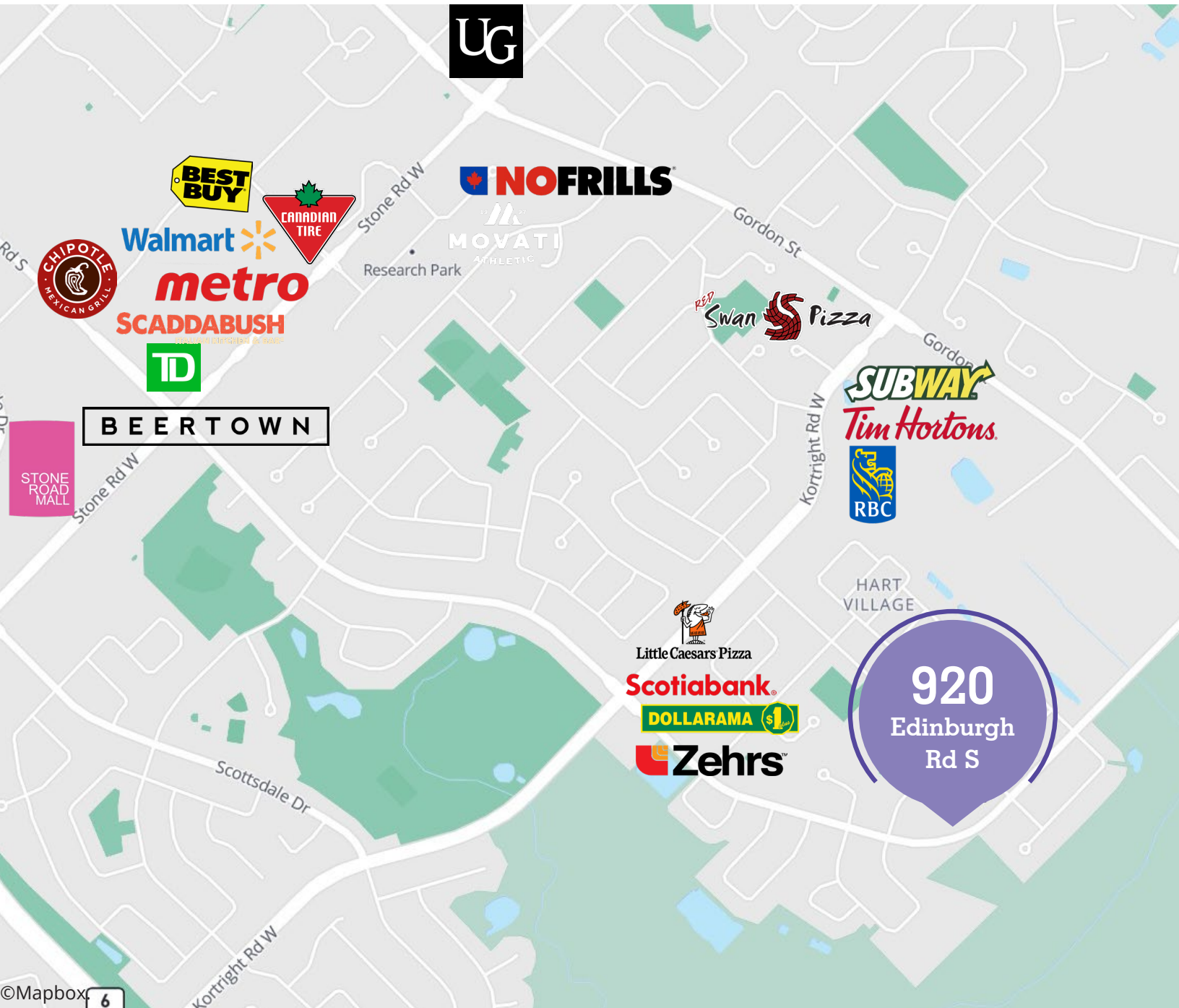
5+ routes
Public transit



\$2,500 month gross
Asking rate



Office for lease | 920 Edinburgh Road S, Guelph



Get more information

Mason Sinkeldam

Sales Representative

+1 226 366 9070

mason.sinkeldam@avisonyoung.com

Chris Valeriote

Sales Representative, Principal

+1 226 366 9014

chris.valeriote@avisonyoung.com

Avison Young Commercial Real Estate Services, LP, Brokerage
231 Shearson Crescent, Suite 102, Cambridge ON N1T 1J5
T +1 226 366 9090 F +1 866 541 9755

**AVISON
YOUNG**



Platinum member