

TAHARI
REALTY

528 W 145TH STREET | **PRIME RETAIL SPACE
FOR LEASE**



WEST HARLEM, NY

**528 W
145TH STREET**

HIGHLIGHTS

- 1,500 SF
- 11 Foot Ceilings
- Private Restroom
- White Boxed
- Former Hair Salon

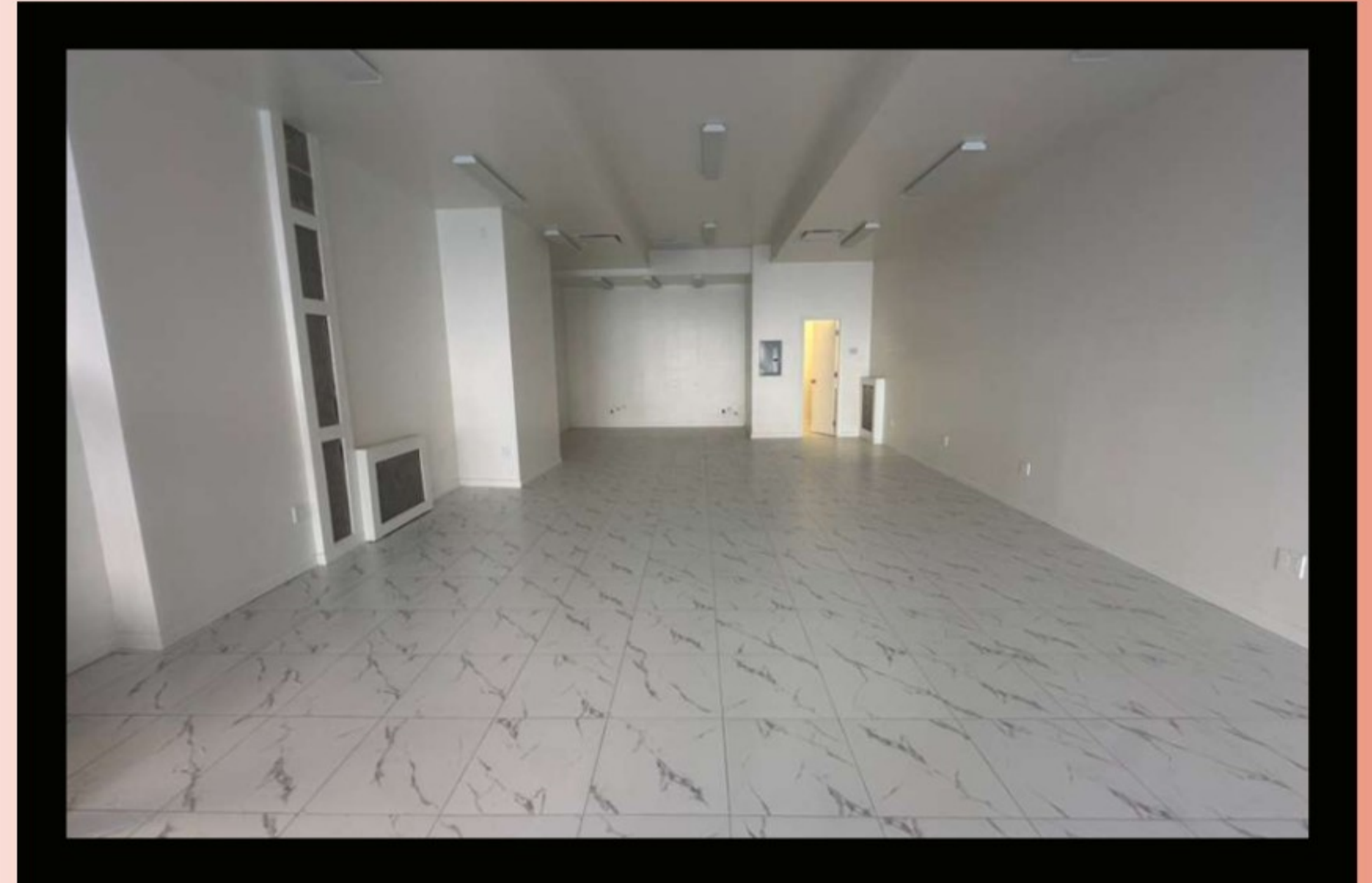


TABLE OF CONTENTS

About The Neighborhood	2
Transportation	3
Property Photos	4

INQUIRE FOR PRICE

ABOUT THE NEIGHBORHOOD

Position your business in the heart of West Harlem, one of Manhattan’s most dynamic and rapidly growing retail corridors. This vibrant stretch along 145th Street benefits from dense residential surroundings, strong neighborhood demand, and consistent high foot traffic.

The location offers excellent accessibility, with nearby subway lines including the A, B, C, and D trains at 145th Street, as well as multiple bus routes connecting you to the rest of Manhattan and beyond.

Surrounded by a mix of national retailers, local businesses, restaurants, and essential services, the area creates a built-in customer base and strong co-tenancy synergy.

Don't miss the opportunity to establish your presence in one of Upper Manhattan's most active and evolving retail markets.



TRANSPORTATION


Transit/Subway	Walk	Distance
145 Street (1 Line)	01 mins	0.1 mi
145 Street (A,B,C,D Line)	05 mins	0.3 mi
137 Street-City College	09 mins	0.5 mi
155 Street (A,C Line)	13 mins	0.7 mi
135 Street (A,B,C Line)	14 mins	0.8 mi

Commuter Rail	Drive	Distance
Harlem-125Th Street Station	05 mins	2.2 mi
Yankees-E 153Rd Street Station	06 mins	2.4 mi
Melrose Station	08 mins	2.6 mi
Highbridge Yard	07 mins	3.6 mi
Morris Heights Station	10 mins	4.4 mi

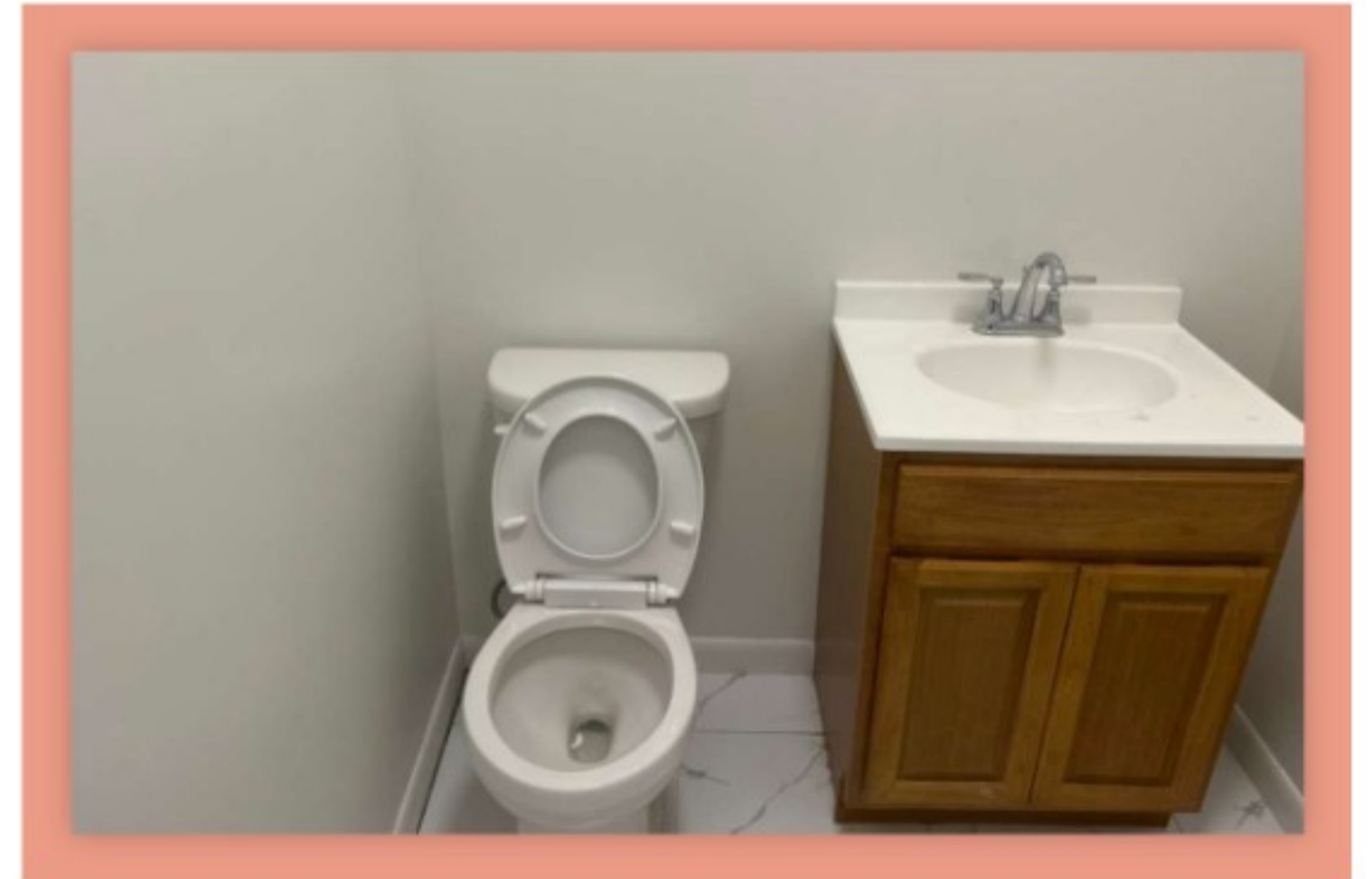
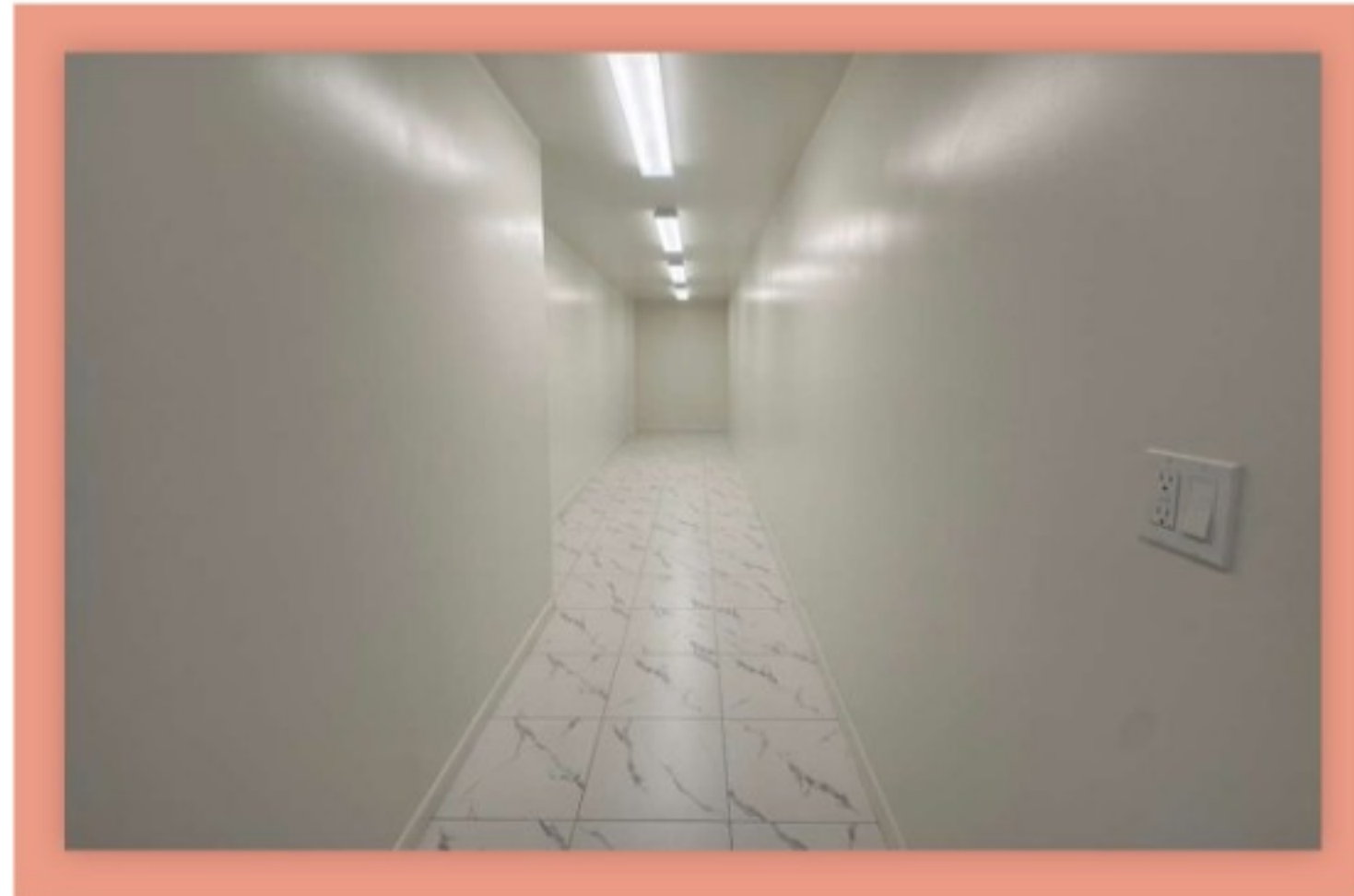
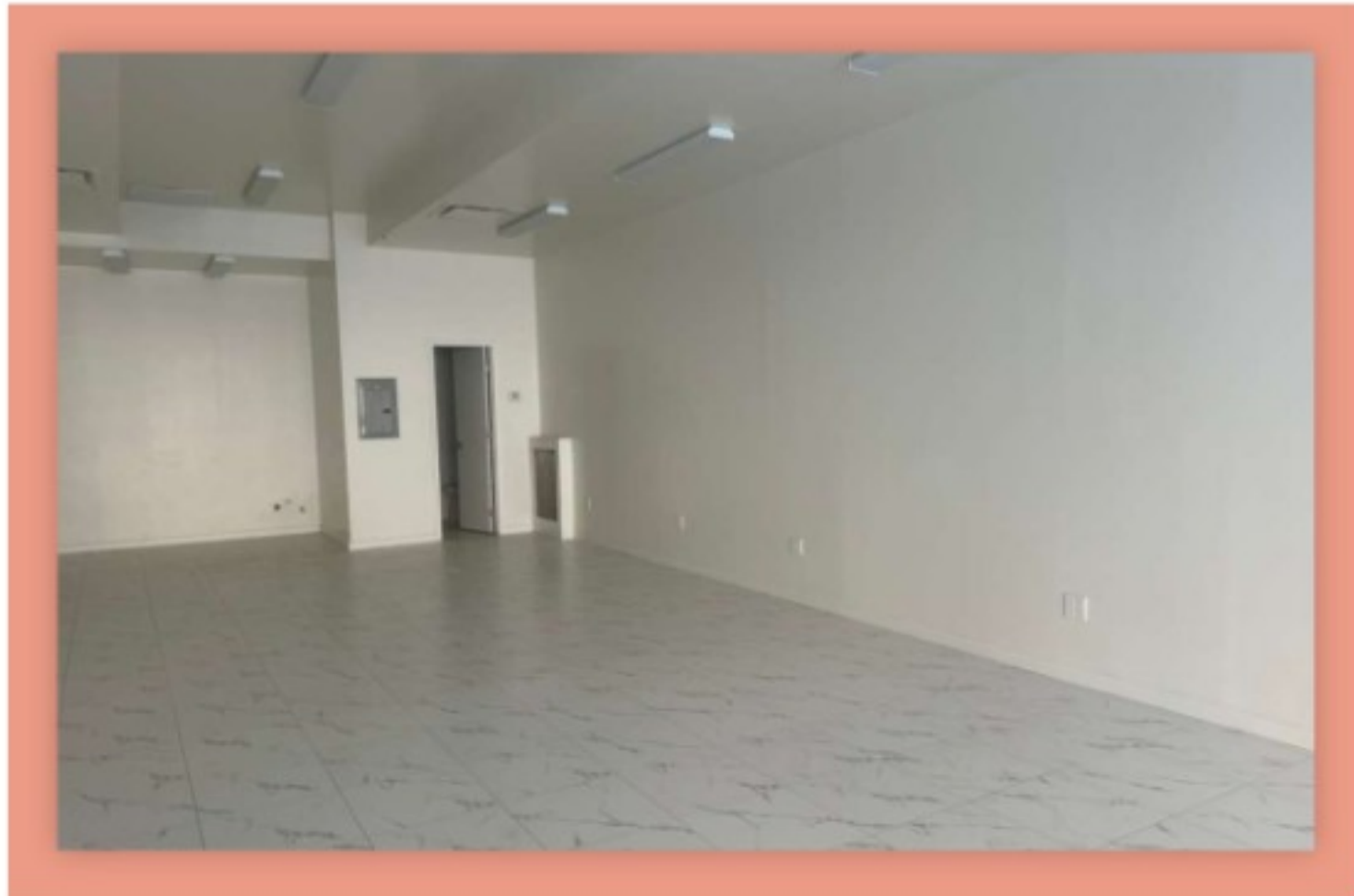
Airport	Drive	Distance
LaGuardia	17 mins	8.0 mi
Newark Liberty International	26 mins	21.9 mi

 WALK SCORE
100%

 TRANSIT SCORE
100%

 BIKE SCORE
80%

*Apartments.com



528 W 145TH STREET

FOR MORE DETAILS CONTACT US

ARYEH VILINSKY

917-450-9773

aryeh@taharirealty.com

ABRAHAM COHEN

917-890-6669

acohen@taharirealty.com

TAHARI
REALTY

www.taharirealty.com

**393 Lafayette St, Fl 2
New York, NY, 10003**