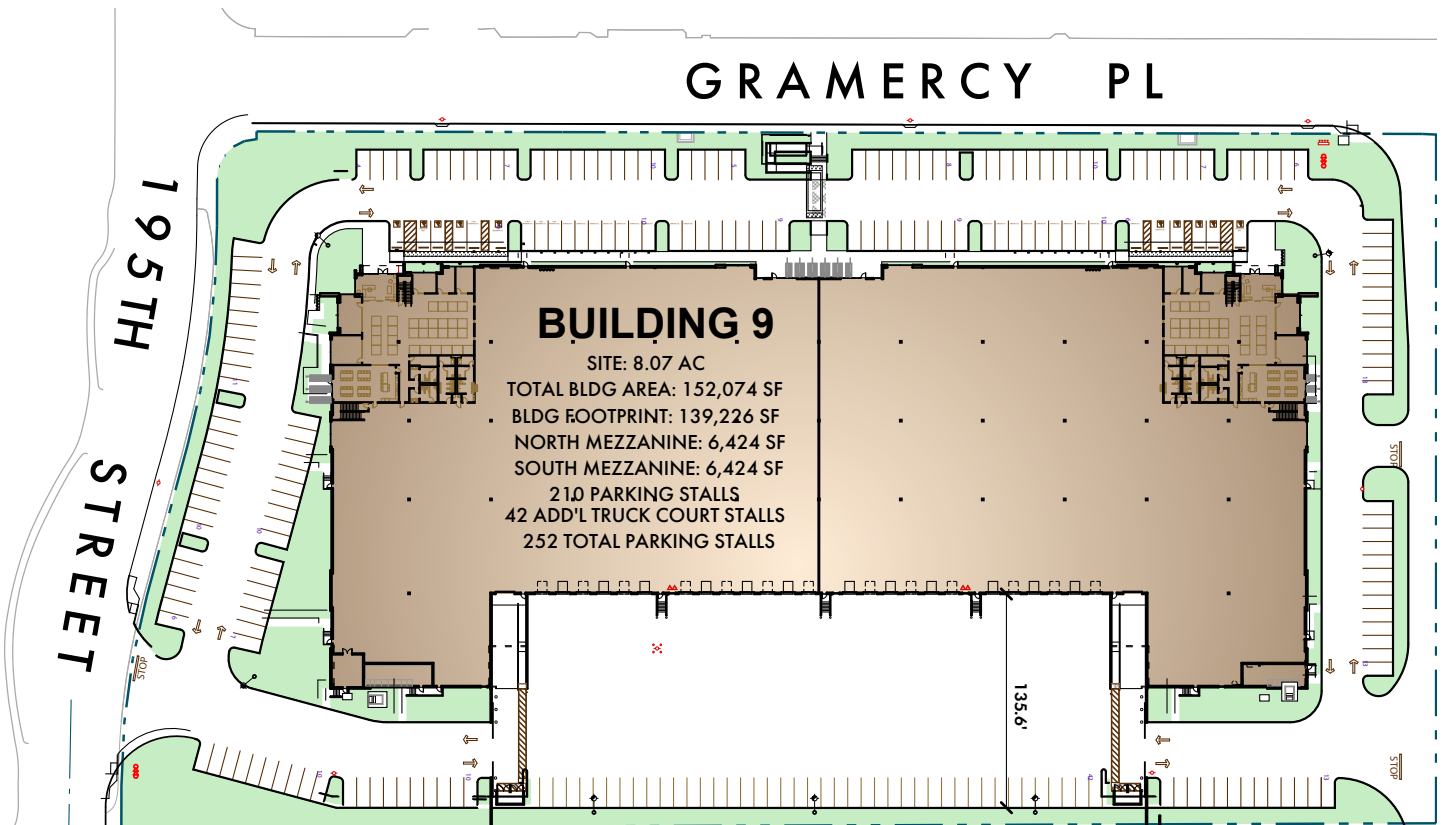


# TORRANCE GATEWAY

PHASE III, BLDG. 9

152,074 SF



**Zac Sakowski**  
Executive Vice President  
Lic. 01510420  
T +1.424.294.3429  
zac.sakowski@am.jll.com



**John Schumacher**  
Vice Chairman  
Lic. 00987225  
T +1.310.363.4960  
john.schumacher@cbre.com

**Caroline Reid**  
Senior Associate  
Lic. 02188038  
+1 310 947 4219  
caroline.reid@cbre.com

**Nicki Peetz**  
Client Services Specialist  
Lic. 01720809  
+1 310 433 0602  
nicki.peetz@cbre.com



**SARES REGIS  
GROUP**