



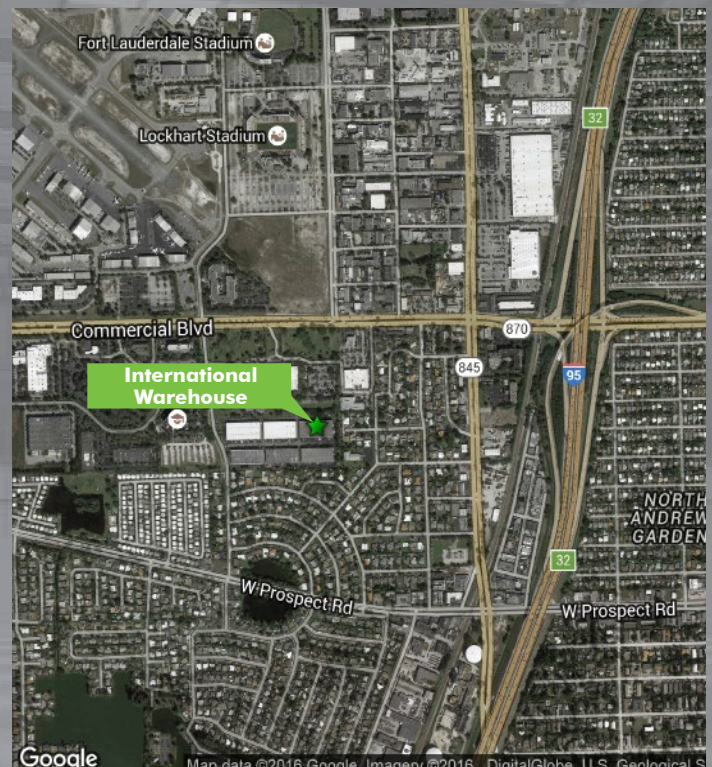
15,020 SF Available

## International Warehouse 4720 NW 15th Avenue | Fort Lauderdale, FL 33309

International Warehouse is located just off of Commercial Blvd. and I-95 in Fort Lauderdale, FL. Building 4720 Suite 4C consists of a total ±15,080 SF with ±2,106 SF of office in an open plan layout with perimeter offices, conference room, kitchenette and restrooms. This space also has two standard drive-in doors and one dock well. All loading doors are oversized. This is ideal for any company that utilizes both dock and grade level loading doors allowing flow from multiple points in the building. The oversized doors are also perfect for parking larger service vehicles indoors. This suite features; LED lighting, a Twin-T-Roof, ±22' clear height, it has partial fire sprinklers, professional property management and institutional ownership.

### Highlights - 4C

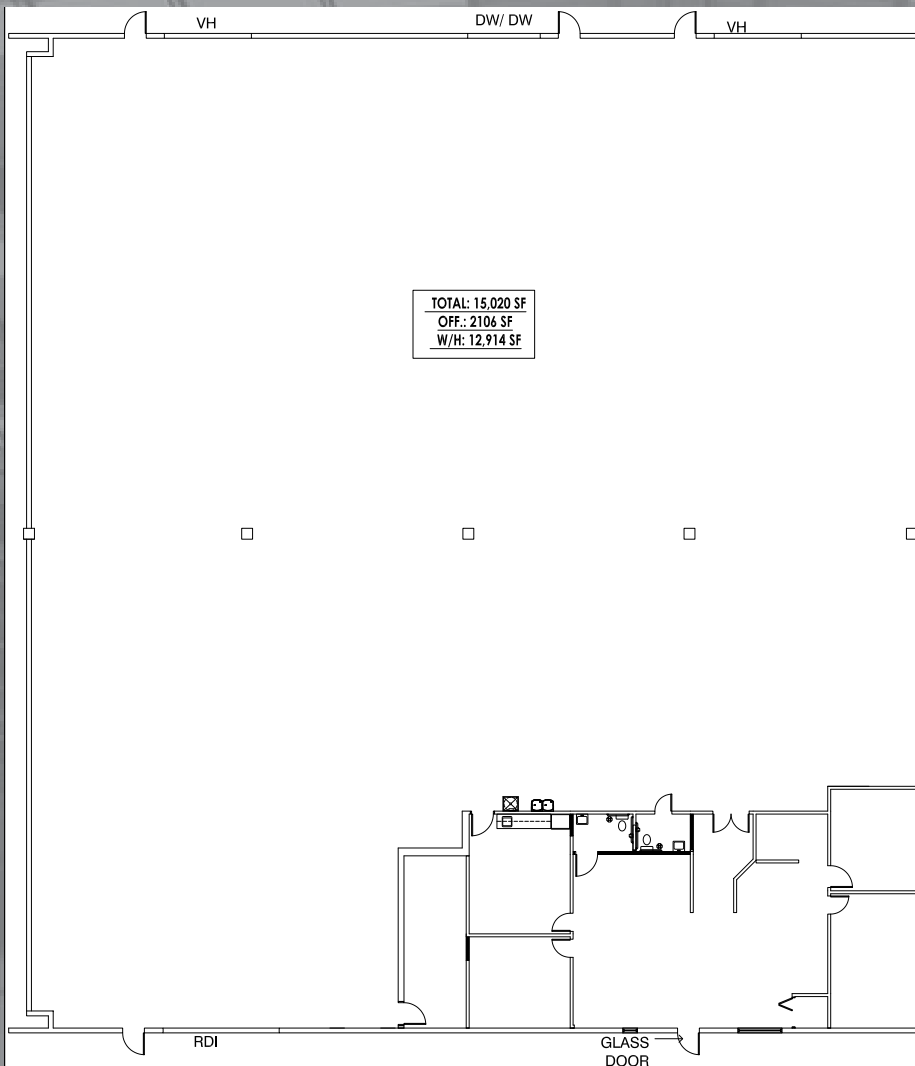
|                           |   |
|---------------------------|---|
| <b>Total Building SF:</b> | 300,000 SF  |
| <b>Available Space:</b>   | 15,020 SF   |
| <b>Office SF:</b>         | ±2,106 SF   |
| <b>Ceiling Height:</b>    | 22' Clear   |
| <b>Sprinkler System:</b>  | Partial   |
| <b>Loading:</b>           | 1 dock well & 1 drive-in, 2 van height doors  |
| <b>Lighting:</b>          | LED   |
| <b>Roof</b>               | Twin-T-Roof   |
| <b>Location:</b>          | Central Broward   |
| <b>Amenities:</b>         | Top schools, banks/retail, hotels, airports & seaports and high end residential communities nearby. |
| <b>Available:</b>         | Immediately   |



# International Warehouse

4720 NW 15th Avenue | Fort Lauderdale, FL 33309

For Lease



## Contacts

### Broker Contacts:

Tom O'Loughlin  
Vice Chairman

Direct: (954) 817-3919

[tom.oloughlin@cbre.com](mailto:tom.oloughlin@cbre.com)

Michael Oretsky  
First Vice President

Direct: (954) 798-4284

[michael.oretsky@cbre.com](mailto:michael.oretsky@cbre.com)

# CBRE

### Owner Contact:

Brad Kluever  
Senior Regional Director

Direct: (312) 344-4347

[bkluever@firt.com](mailto:bkluever@firt.com)

 **FIRST**  
INDUSTRIAL  
REALTY TRUST

© 2026 CBRE, Inc. This information has been obtained from sources believed reliable. We have not verified it and make no guarantee, warranty or representation about it. Any projections, opinions, assumptions or estimates used are for example only and do not represent the current or future performance of the property. You and your advisors should conduct a careful, independent investigation of the property to determine to your satisfaction the suitability of the property for your needs.

CBRE, Inc. | Licensed Real Estate Broker

[www.firstindustrial.com](http://www.firstindustrial.com)  
[www.cbre.com](http://www.cbre.com)