



205 & 215
LEXINGTON

MOVE-IN READY FLOOR W/ TERRACE
215 LEXINGTON – ENTIRE 19TH FLOOR

NEWLY RENOVATED SPACE W/ RARE PRIVATE TERRACE AT 215 LEX

FURNISHED FULL FLOOR FEATURING EXCELLENT NATURAL LIGHT, GLASS-FRONTED CONFERENCE ROOMS AND OFFICES, AND A PRIVATE TERRACE WITH STUNNING CITY VIEWS. ATTENDED LOBBY WITH ON-SITE MANAGEMENT AND 24/7 ACCESS. OWNERSHIP WILL MODIFY TO SUIT.

SPACE
ENTIRE 19TH FL

SIZE
6,670 SQ FT

RENT
INQUIRE

TERM
NEGOTIABLE

POSSESSION
IMMEDIATE



205 & 215
LEXINGTON



FLOOR PLAN

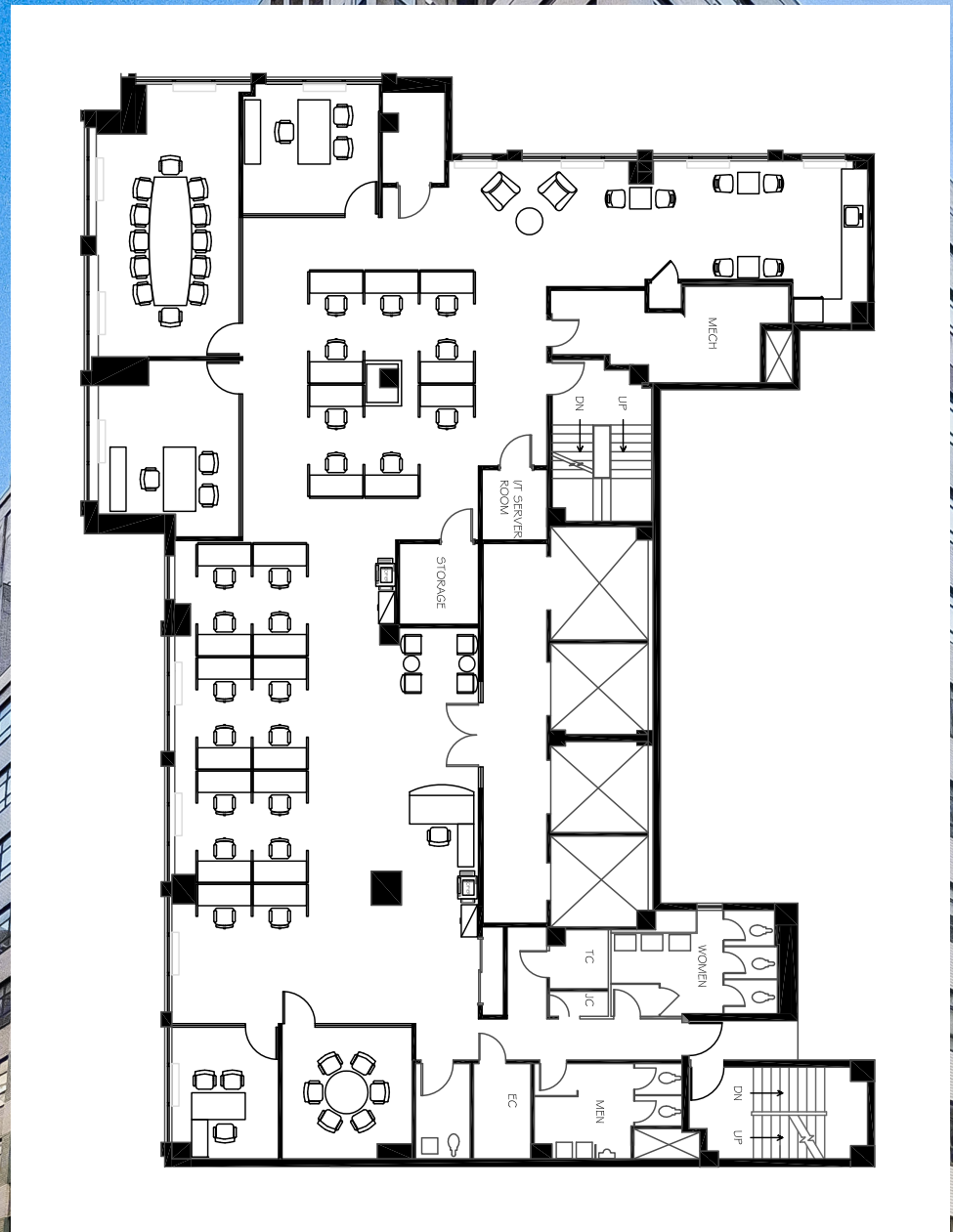
6,670 SQUARE FEET

1 GLASS-FRONTED CONFERENCE ROOM

4 MEETING ROOMS/
PRIVATE OFFICES

30+ BULLPEN
WORKSTATIONS

1 PANTRY WITH
DINING AREA



NEIGHBORHOOD & TRANSIT

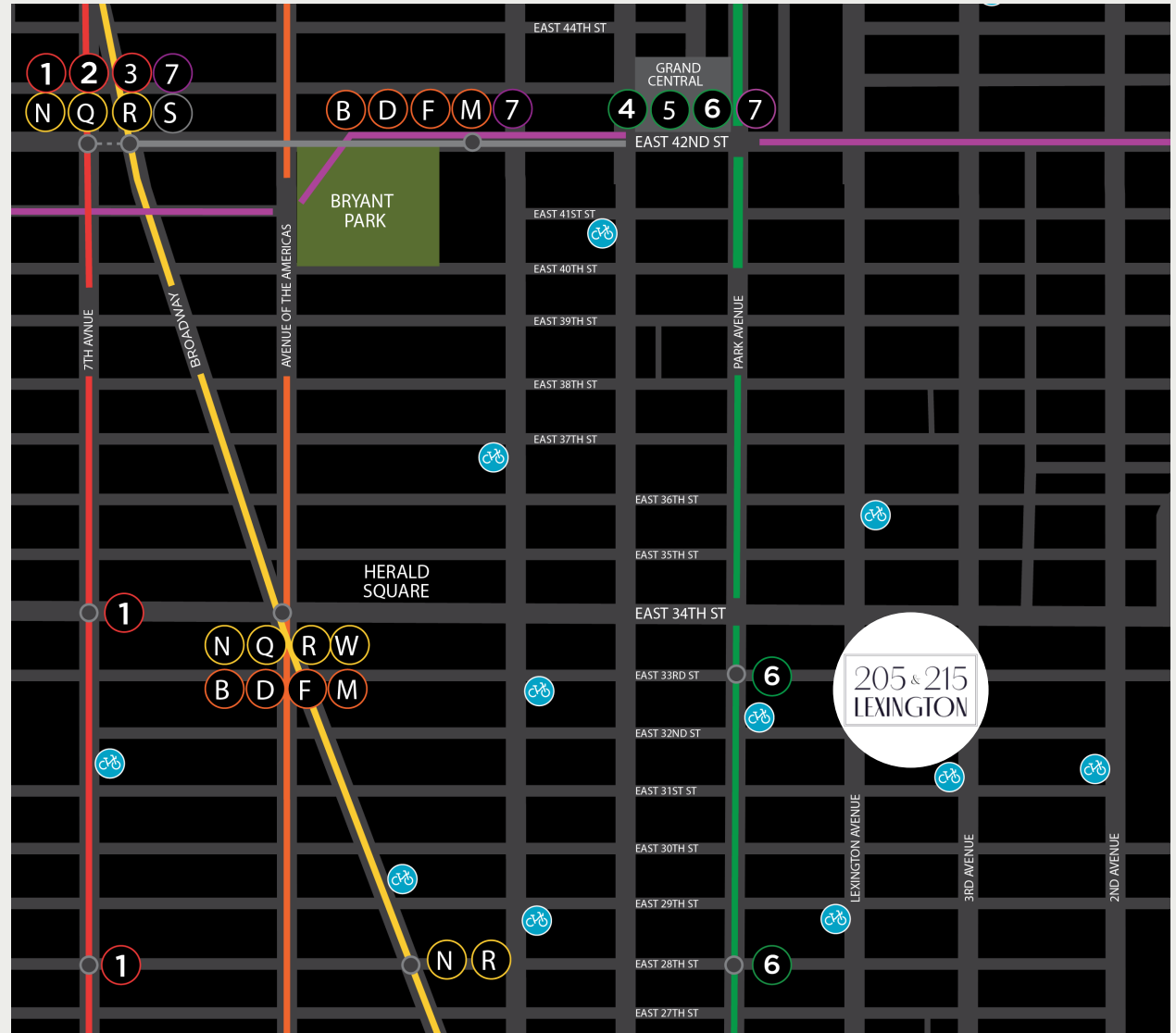
CLOSE TO MAJOR TRANSIT HUBS AND
SUBWAY CONNECTIONS. LESS THAN
15 MINUTES FROM METRO-NORTH,
LIRR, PATH, NJ TRANSIT, AND AMTRAK.

1 STOP FROM
GRAND CENTRAL

2 MINUTE WALK TO
THE M34 SBS STOP

9 MINUTE WALK
TO PENN

8 MINUTE WALK
TO 33RD ST PATH



205 & 215 LEXINGTON

LEASING CONTACT

JARED STERNBERG
KAUFMAN LEASING
212.471.4352
JAREDS@KFMN.NYC

KAUFMAN



THE SOMERSET GROUP

INVESTMENT | DEVELOPMENT | MANAGEMENT