



RETAIL SPACE

**129 GRAHAM AVENUE, WILLIAMSBURG, BROOKLYN, NY**

Between Johnson Avenue & Boerum Street

**BRAND NEW STOREFRONT BEING INSTALLED - 1,083 SF INCLUDING MEZZANINE**




# 129 GRAHAM AVENUE

Between Johnson Street & Boerum Avenue

## Available

Ground:	514 sf	Frontage:	26'-1 <sup>3</sup> / <sub>4</sub> " along Graham Ave
Mezzanine:	569 sf via staircase	Possession:	Immediate
Basement:	947 sf of storage space	Rent:	Upon request

## Comments

- Brand new storefront being installed - all uses considered
- Delivered in white box condition with (1) restroom
- Centrally located between the Montrose Ave  subway station, Broadway  station, and Lorimer St  station

## By the Numbers

Retail Businesses

1,252

1 Mile Radius

Households

68,160

1 Mile - 2024

Avg. Household Income

\$97,809

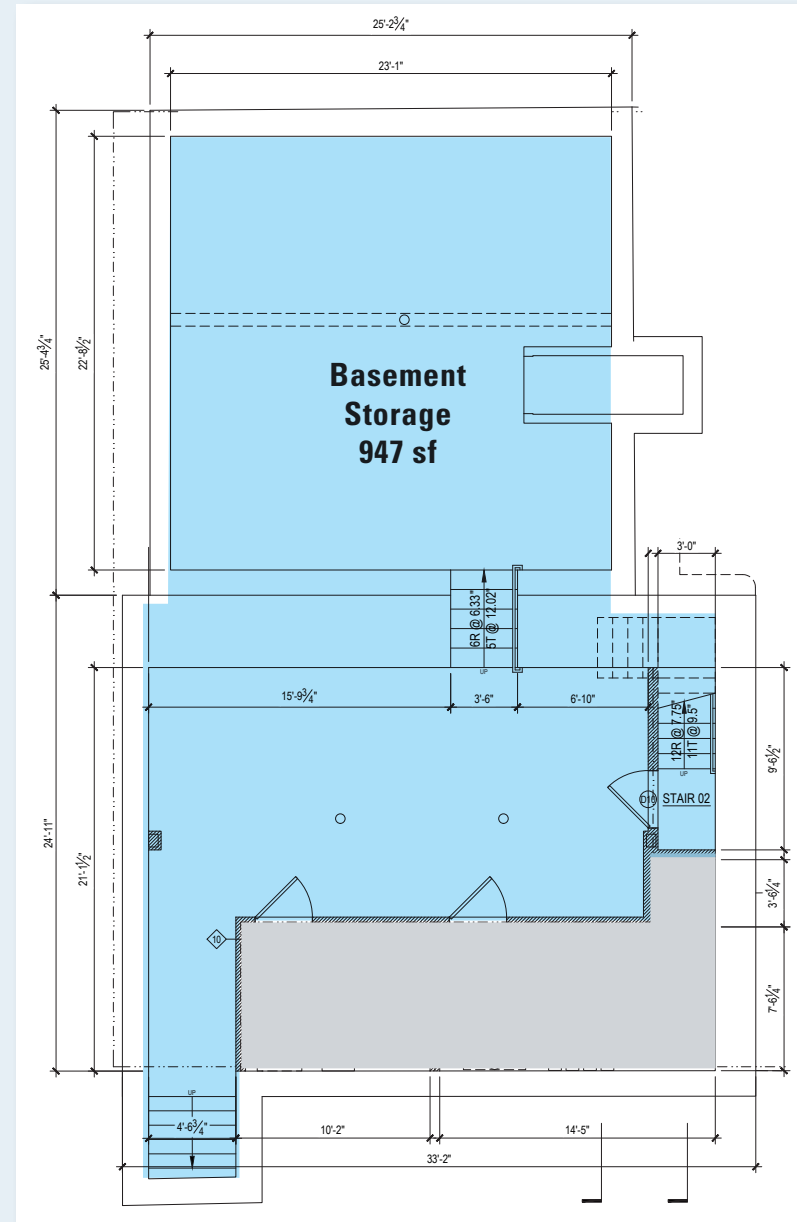
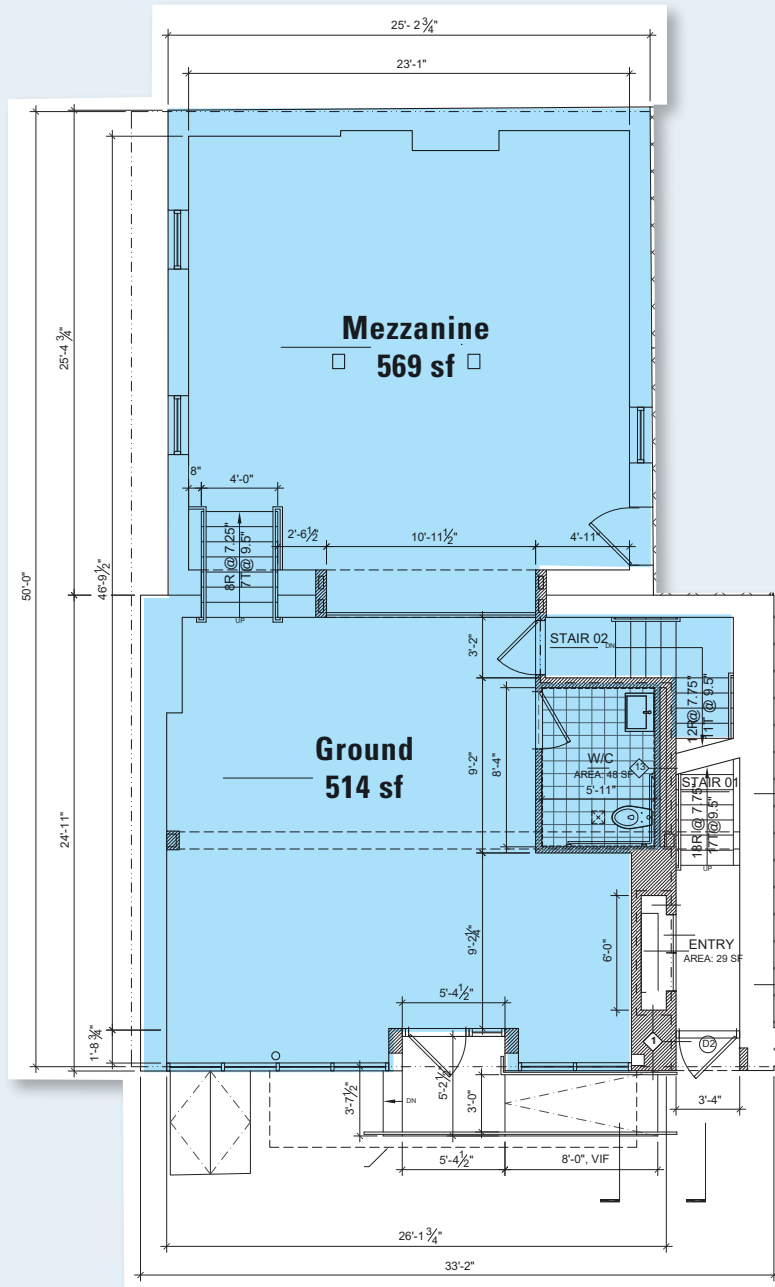
1 Mile - 2024

Annual Subway Ridership

2,696,690

2024 Total - Montrose Ave & Broadway stations

# Floor Plan



# Area Map





For further information and/or inspection contact exclusive broker:

**Mark Tergesen**

Partner

212.400.9528

mt@absre.com

**Ben Waller**

Partner

212.400.9515

bwaller@absre.com

**Quinn Reavy**

Associate

212.400.6064

qreavy@absre.com

ABS Partners Real Estate • 200 Park Avenue South, 10th Floor, New York, NY 10003 • 212.400.6060 • [www.absre.com](http://www.absre.com)