



**1,190 SF – 21,267 RSF FOR LEASE**

## 300 & 350 Eagleview Boulevard

EXTON, PA

### 300 Eagleview Boulevard

- First Floor – 19,861 RSF & 1,477 RSF
- 4.01/1,000 parking ratio
- Newly renovated lobby
- Grab n' Go cafe

### 350 Eagleview Boulevard

- First Floor – 1,190 RSF, 2,987 RSF & 11,030 RSF
- Second Floor – 21,267 RSF
- 5.59/1,000 parking ratio
- Newly renovated lobby

*For information, please contact:*

**Jim Dugan**

*Executive Managing Director*

t 610-879-4513

[james.dugan@nmrk.com](mailto:james.dugan@nmrk.com)

**Jeff Mack**

*Executive Managing Director*

t 610-755-6960

[jeff.mack@nmrk.com](mailto:jeff.mack@nmrk.com)

1000 Continental Drive  
Suite 200  
King of Prussia, PA 19406  
t 610-265-0600  
**Licensed in Pennsylvania as  
Newmark Real Estate**

## 300 & 350 Eagleview Boulevard

1,190 SF – 21,267 SF AVAILABLE FOR LEASE



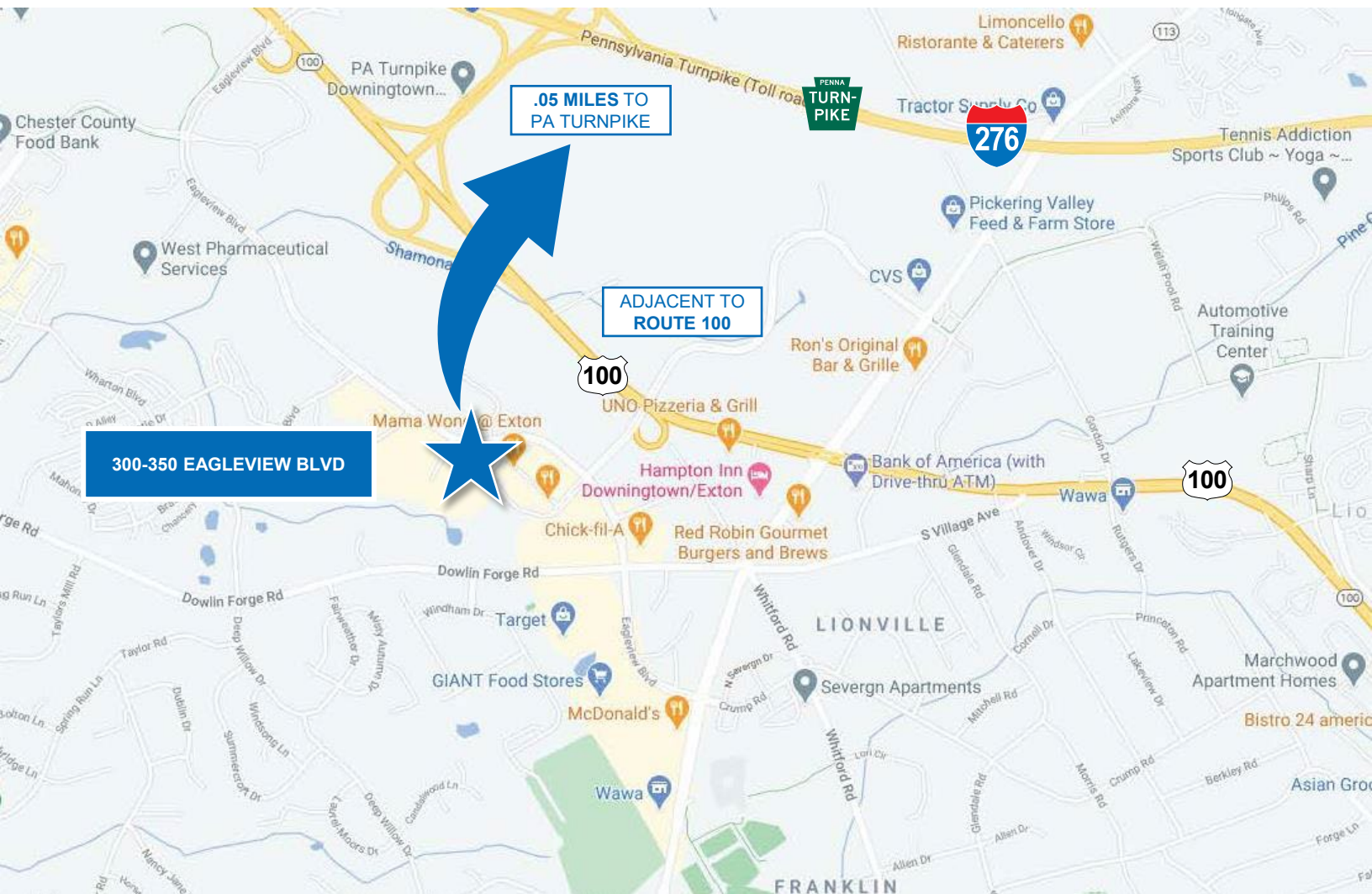
### SUPERIOR AMENITY-RICH SUBURBAN ENVIRONMENT

Unique amenity-rich environment including an abundance of retail walkable amenities, multi-family communities and much more only minutes from the properties.



### TRANSIT-ORIENTED LOCATION

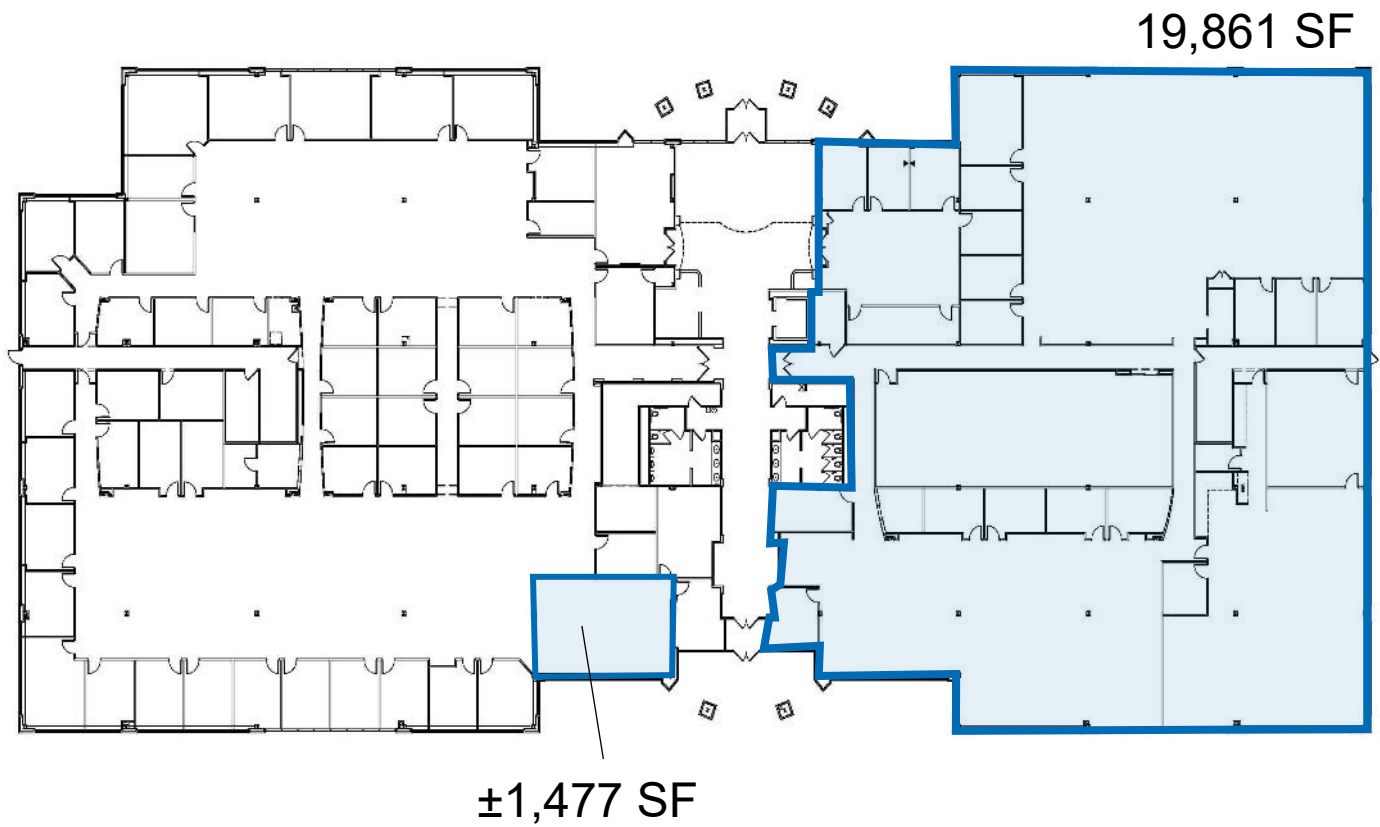
Prominently located with the region's most traversed thoroughfares nearby, offering swift connections to the entire Greater Philadelphia area, with the Pennsylvania Turnpike (Interstate 276) Interchange less than one mile away.



## 300 Eagleview Boulevard

1,477 SF – 19,861 SF AVAILABLE FOR LEASE

### 1<sup>ST</sup> FLOOR AVAILABILITIES





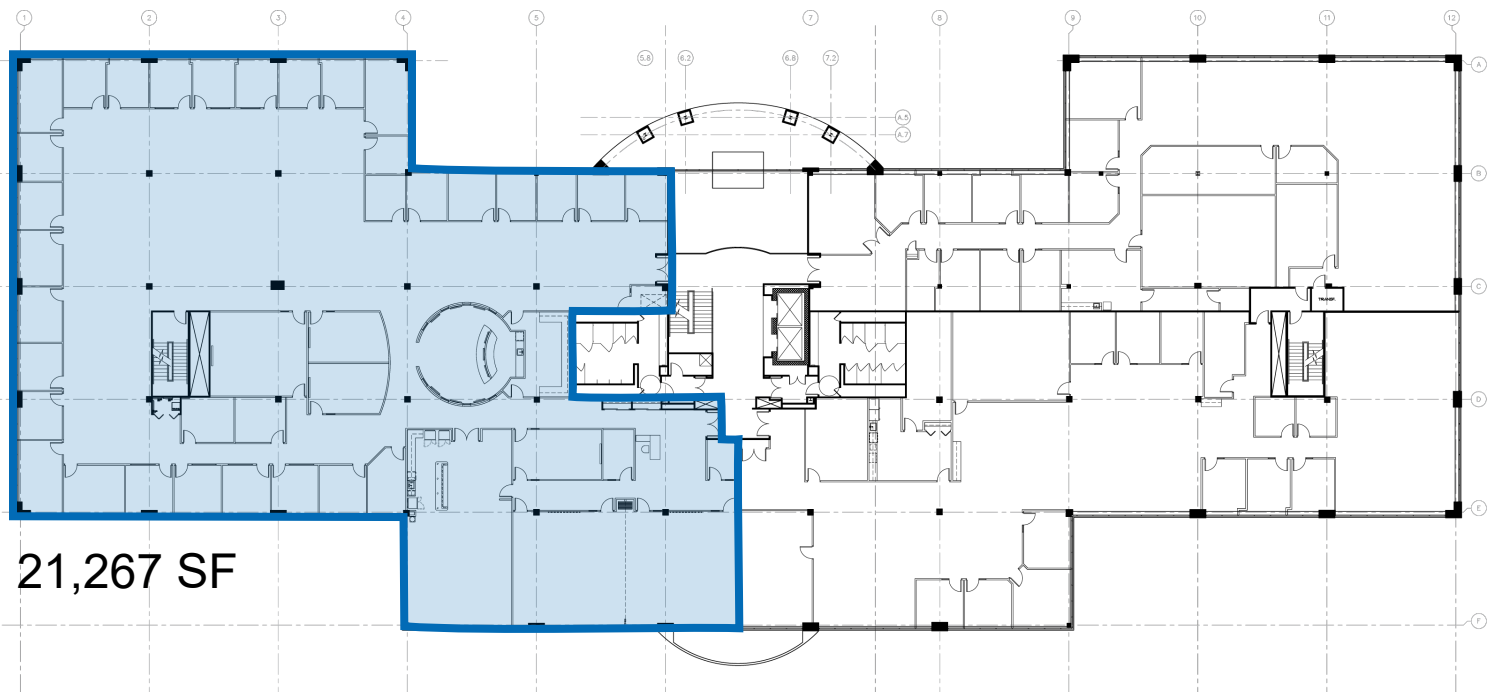
## 350 Eagleview Boulevard

1,190 SF – 21,267 SF AVAILABLE FOR LEASE

### 1<sup>ST</sup> FLOOR AVAILABILITY



### 2<sup>ND</sup> FLOOR AVAILABILITY

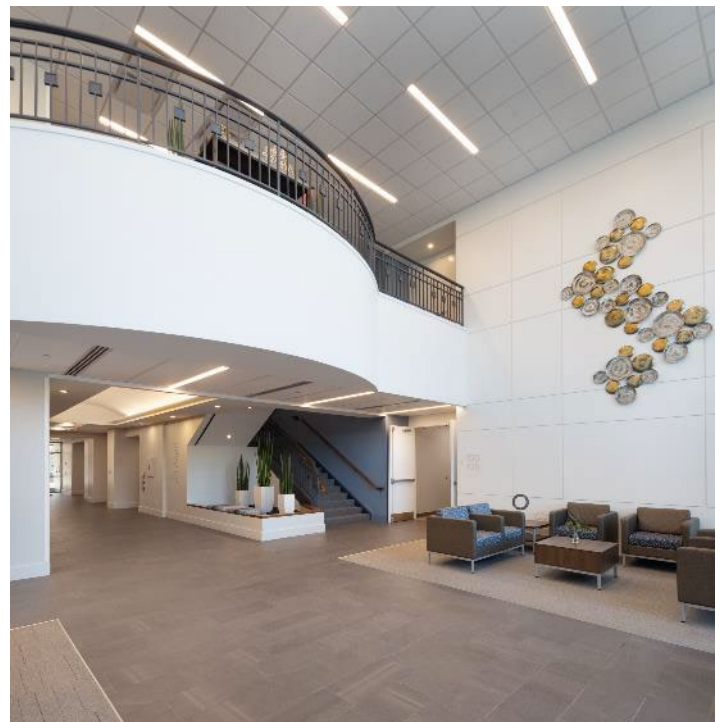


## 300 & 350 Eagleview Boulevard

1,190 SF – 21,267 SF AVAILABLE FOR LEASE



BUILDING 300: GRAB N' GO



NEWLY RENOVATED LOBBY