

CENTRALLY LOCATED OFFICE BUILDING FOR LEASE

Two Oyster Point
825 Diligence Drive
Newport News, VA 23606



LEASE RATE \$17.00/SF - \$17.50/SF | FULL SERVICE

ABOUT PROPERTY

- 2-story, 38,900 square foot office building on 3.42 acres
- Ample parking - 4.4/1,000
- Easy access off of J. Clyde Morris Boulevard and one minute from Interstate 64
- Full Service with Janitorial
- Available
 - Ste 200, 2,933 SF | Rent \$4,155/mn
 - Ste 202B, 2,435 SF | Rent \$3,550/mn
 - Ste 209, 1,885 SF | Rent \$2,750/mn



For more information:
MICHAEL ALLEN, CCIM
Call or Text 757.952.6660
MichaelAllen@HarveyLindsay.com

CLARK BALDWIN, CCIM
757.640.9290
ClarkBaldwin@HarveyLindsay.com

HARVEY LINDSAY
COMMERCIAL REAL ESTATE

www.harveylindsay.com

TENANT ROSTER

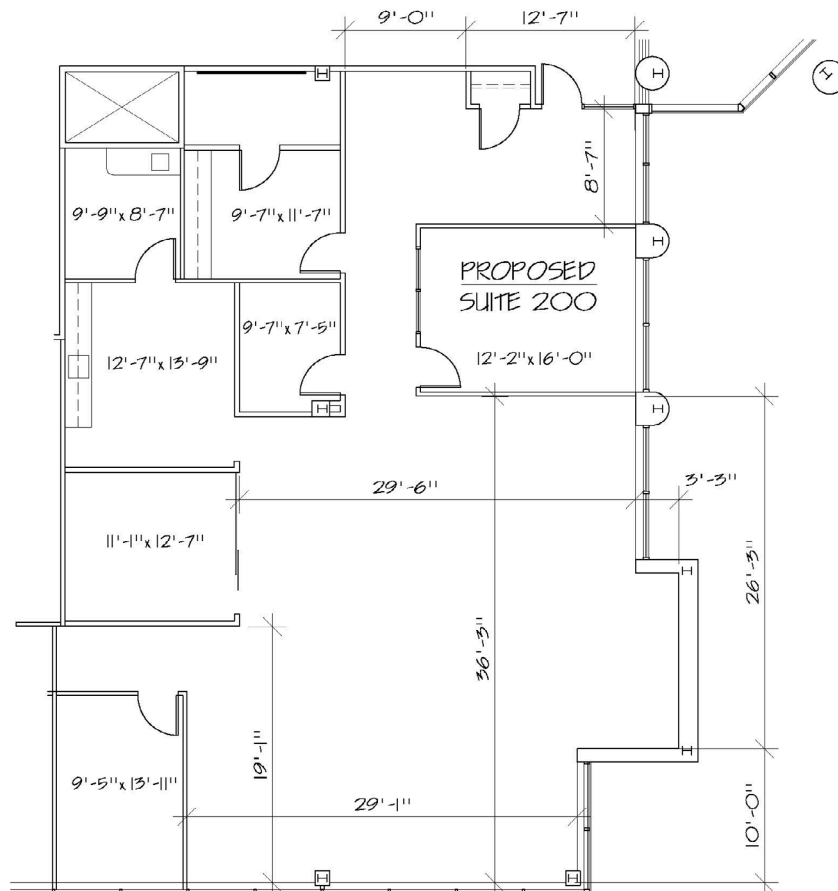
FIRST FLOOR

Suite 100	Coastal Medical & Psychiatric Svcs
Suite 102	Texoma ABA
Suite 114	Harvey Lindsay Commercial RE
Suite 116	Fast Track EMS
Suite 120	NCS Pearson
Suite 124	Venture Dynamics

SECOND FLOOR

Suite 200	2,933 SF; AVAILABLE Nov. 1
Suite 201	Wright Choices
Suite 202A	Alpha Enterprises
Suite 202B	2,435 SF; AVAILABLE NOW
Suite 210	TPMG
Suite 207	Firsthand Health
Suite 209	1,885 SF; AVAILABLE NOW
Suite 226	Greenbrook TMS

PROPOSED FLOOR PLAN SUITE 200 - 2,933 SF



TENANT ROSTER

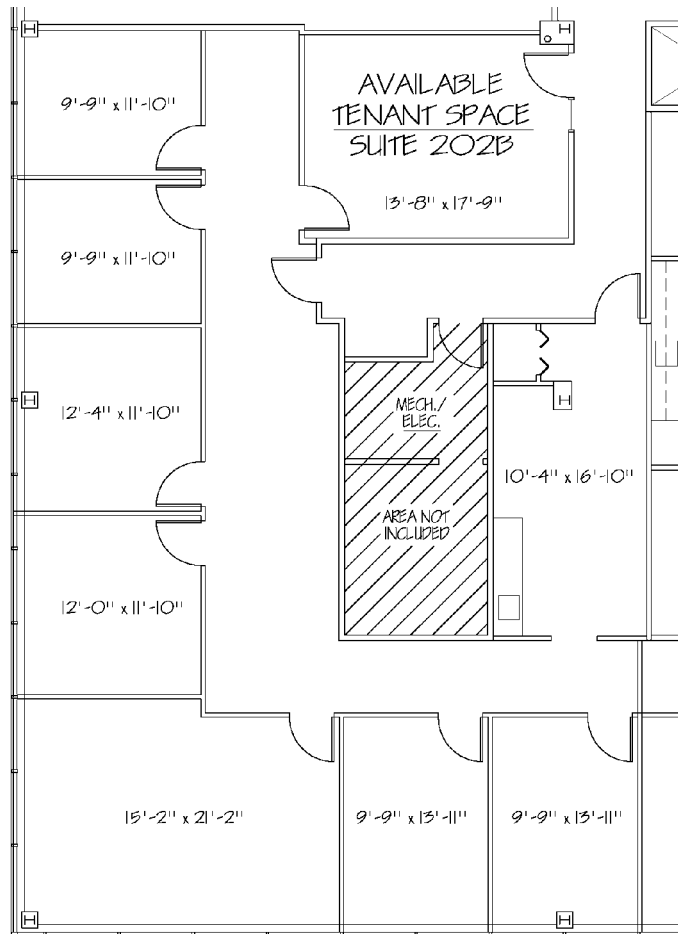
FIRST FLOOR

Suite 100	Coastal Medical & Psychiatric Svcs
Suite 102	Texoma ABA
Suite 114	Harvey Lindsay Commercial RE
Suite 116	Fast Track EMS
Suite 120	NCS Pearson
Suite 124	Venture Dynamics

SECOND FLOOR

Suite 200	2,933 SF; AVAILABLE Nov. 1
Suite 201	Wright Choices
Suite 202A	Alpha Enterprises
Suite 202B	2,435 SF; AVAILABLE NOW
Suite 210	TPMG
Suite 207	Firsthand Health
Suite 209	1,885 SF; AVAILABLE NOW
Suite 226	Greenbrook TMS

FLOOR PLAN
SUITE 202B - 2,435 SF



TENANT ROSTER

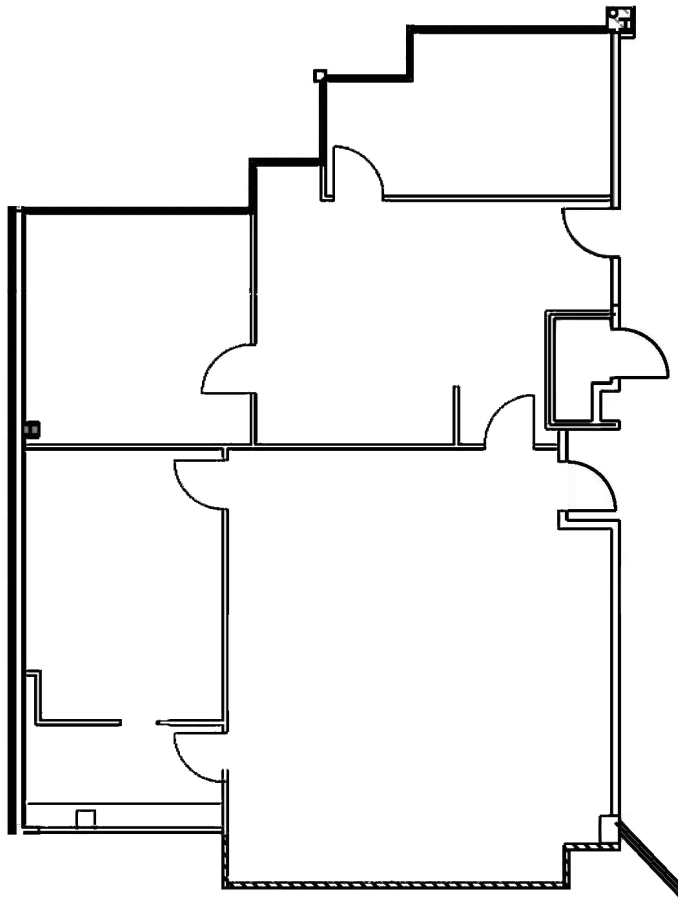
FIRST FLOOR

Suite 100	Coastal Medical & Psychiatric Svcs
Suite 102	Texoma ABA
Suite 114	Harvey Lindsay Commercial RE
Suite 116	Fast Track EMS
Suite 120	NCS Pearson
Suite 124	Venture Dynamics

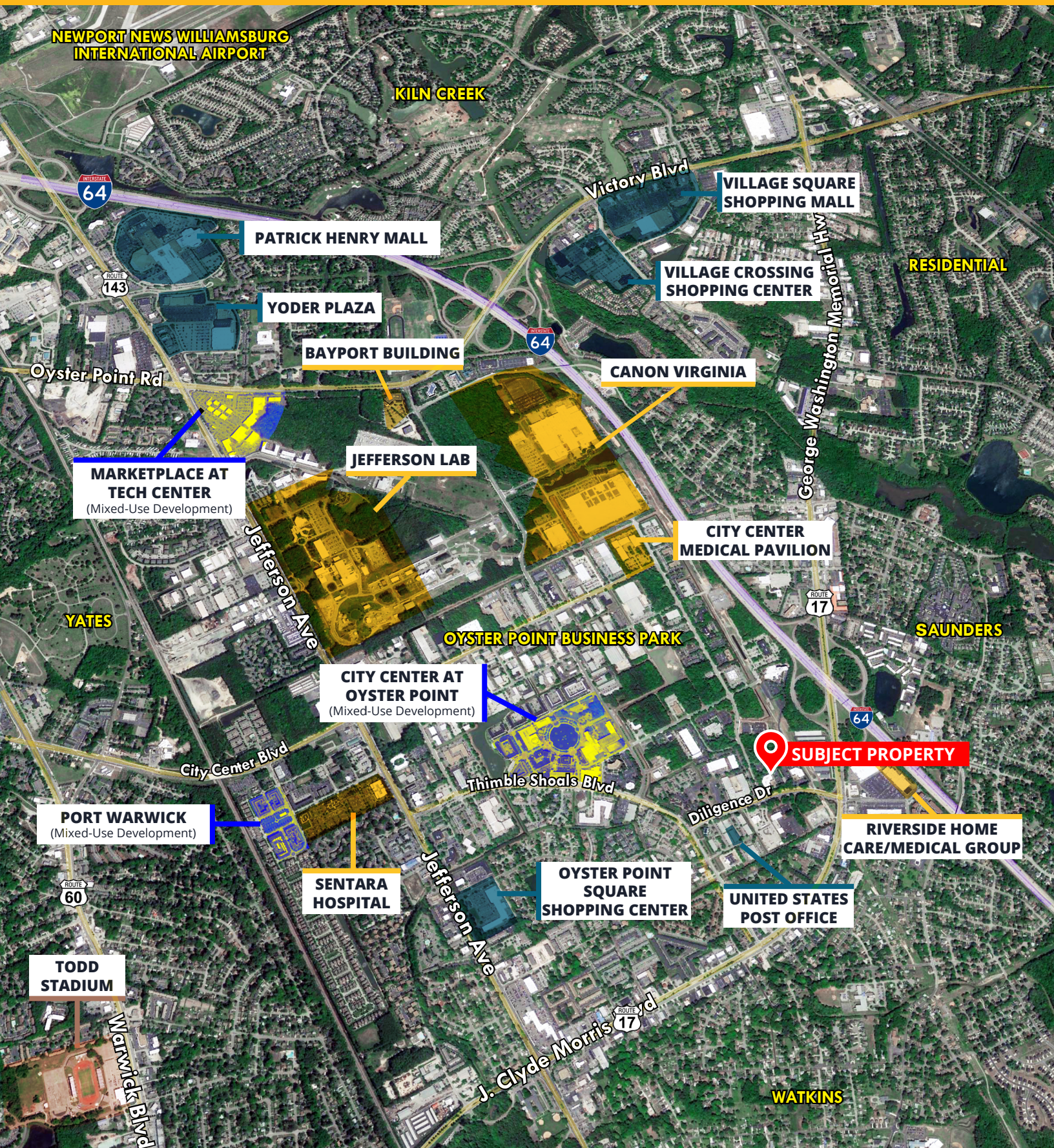
SECOND FLOOR

Suite 200	2,933 SF; AVAILABLE Nov. 1
Suite 201	Wright Choices
Suite 202A	Alpha Enterprises
Suite 202B	2,435 SF; AVAILABLE NOW
Suite 210	TPMG
Suite 207	Firsthand Health
Suite 209	1,885 SF; AVAILABLE NOW
Suite 226	Greenbrook TMS

FLOOR PLAN
SUITE 209 - 1,885 SF



AREA OVERVIEW | 825 Diligence Drive, Newport News, VA 23606



For more information:
MICHAEL ALLEN, CCIM
Call or Text 757.952.6660
MichaelAllen@HarveyLindsay.com

CLARK BALDWIN, CCIM
757.640.9290
ClarkBaldwin@HarveyLindsay.com

825 Diligence Drive • Suite 114
Newport News, Virginia 23606
757-873-2020
www.HarveyLindsay.com

HARVEY LINDSAY
COMMERCIAL REAL ESTATE