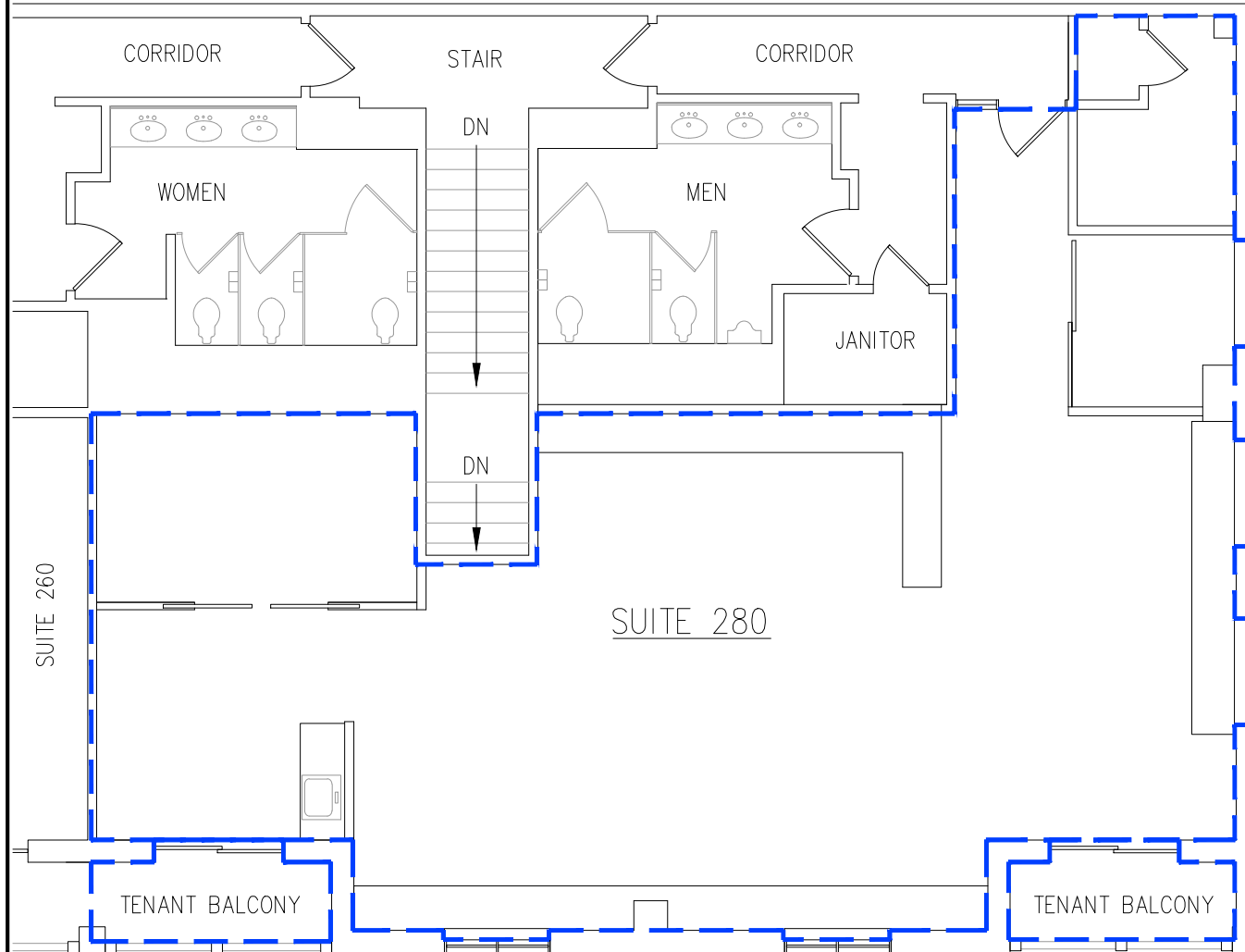


NOTE:
SILVERBERG ASSOCIATES, INC. HAS REVIEWED EXISTING DRAWINGS AND THE GENERAL FLOOR LAYOUT IN ORDER TO PROVIDE A DIMENSIONAL LAYOUT SPECIFIC TO THIS TENANT SPACE. THIS REVIEW AND ANY RESULTING DRAWINGS/SKETCHES ARE A BASIC DEPICTION AND SHALL NOT BE CONSIDERED A DETAILED REPRESENTATION OF DETAILS SUCH AS QUANTITIES, DIMENSIONS, PROCESSES, MEANS OR METHODS TO BE USED IN THE COORDINATION OF THE WORK GOING FORWARD.

SILVERBERG ASSOCIATES, INC. MAKES NO WARRANTIES, EITHER EXPRESS OR IMPLIED, AND SHALL NOT BE RESPONSIBLE FOR ANY DEVIATIONS FROM THE ORIGINAL DEPICTIONS, NOT BROUGHT TO THEIR ATTENTION.

FURTHER ANY FUTURE CHANGES WHICH MAY BE MADE BY THE OWNER, ARCHITECT OF RECORD, GENERAL CONTRACTOR OR ANY INDIVIDUALS REPRESENTING THEM ON THE PROJECT, REMAIN THE SOLE RESPONSIBILITY OF THE PARTIES INVOLVED AND THEY DO HEREBY HOLD HARMLESS AND RELEASE SILVERBERG ASSOCIATES, INC. FROM ANY DAMAGES, LIABILITIES AND/OR COSTS INVOLVED WITH SUCH CHANGES.



2nd Floor Keyplan

--- OCCUPANT AREA MEASUREMENT LINE

SUITE 280

RENTABLE AREA = 1,793.99 s.f.

OCCUPANT AREA = 1,369.35 s.f.

NOTE: TENANT BALCONIES ARE FOR TENANT'S SOLE USE AND IS INCLUDED IN OCCUPANT AREA & RENTABLE AREA CALCULATION.



SILVERBERG
ASSOCIATES, INC.

ARCHITECTS

182 NASSAU ST., SUITE 302
PRINCETON, NJ 08542

OFFICE (609) 921-1867
FAX (609) 921-8326

PROJECT TITLE:
17 HULFISH
RENTABLE AREAS

PROJECT LOCATION:
17 HULFISH ST.
PRINCETON, NJ 08542

DRAWING:
LEASING AREA
SUITE 280

DATE: 10.26.23

SCALE: 1/8"

SA PROJECT NO.:
22325

SHEET NUMBER:

280

SHEET 1 OF 1