

For Lease

MAIDU PROFESSIONAL PARK

1101 Maidu Drive, Auburn, CA 95603

±2,934 SF MEDICAL OFFICE SPACE AVAILABLE



Chad Cook, MCR, SIOR, CCIM
Senior Director
chad.cook@cushwake.com
+1 916 764 1181
CA Lic. #01711687

Zach Mosle, CCIM
Director
zach.mosle@cushwake.com
+1 925 683 6822
CA Lic. #01924595



©2025 Cushman & Wakefield. All rights reserved. The information contained in this communication is strictly confidential. This information has been obtained from sources believed to be reliable but has not been verified. NO WARRANTY OR REPRESENTATION, EXPRESS OR IMPLIED, IS MADE AS TO THE CONDITION OF THE PROPERTY (OR PROPERTIES) REFERENCED HEREIN OR AS TO THE ACCURACY OR COMPLETENESS OF THE INFORMATION CONTAINED HEREIN, AND SAME IS SUBMITTED SUBJECT TO ERRORS, OMISSIONS, CHANGE OF PRICE, RENTAL OR OTHER CONDITIONS, WITHDRAWAL WITHOUT NOTICE, AND TO ANY SPECIAL LISTING CONDITIONS IMPOSED BY THE PROPERTY OWNER(S). ANY PROJECTIONS, OPINIONS OR ESTIMATES ARE SUBJECT TO UNCERTAINTY AND DO NOT SIGNIFY CURRENT OR FUTURE PROPERTY PERFORMANCE.

CUSHMANWAKEFIELD.COM

MAIDU PROFESSIONAL PARK

1101 Maidu Drive, Auburn, CA 95603

OVERVIEW

FOR LEASE

PREMISES

NWC of Maidu Dr. & Shirland Tract Rd.

AVAILABLE SPACE:
SUITE 200 - ±2,934 SF

LEASE TYPE

Direct

ASKING RENT

\$1.95/SF, MG

NEIGHBORS

- Maidu Dental
- My Tutoring Partners
- Auburn Fit1
- Capitol Floats
- Peak Land Services
- Sand & Sage
- 2 Hermanos Jalisco Grill

PROPERTY HIGHLIGHTS

- High-End Medical Building
- Direct Entrance from Parking Lot
- Located near Downtown Auburn
- Onsite parking 4.55/1,000 SF.
- Built 2005

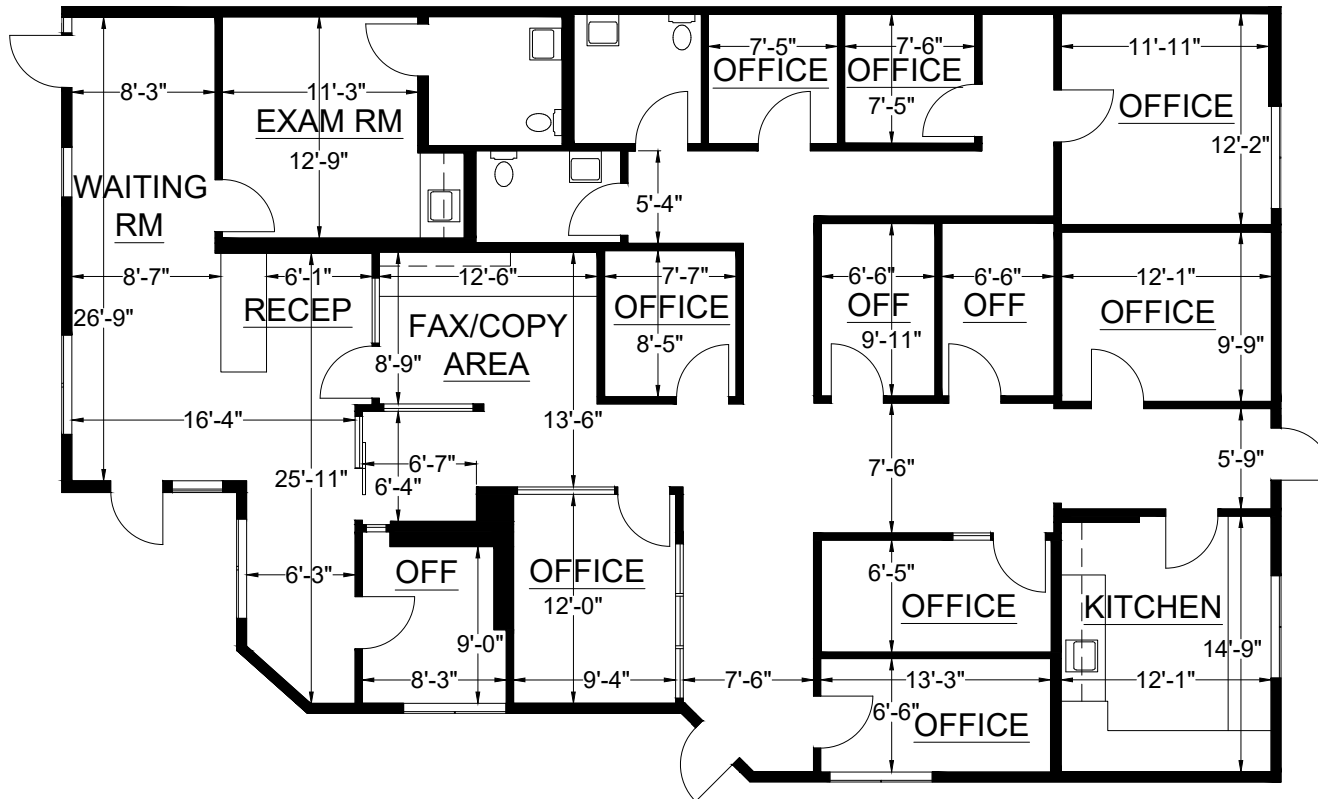


MAIDU PROFESSIONAL PARK

1101 Maidu Drive, Auburn, CA 95603

FLOOR PLAN

FOR LEASE

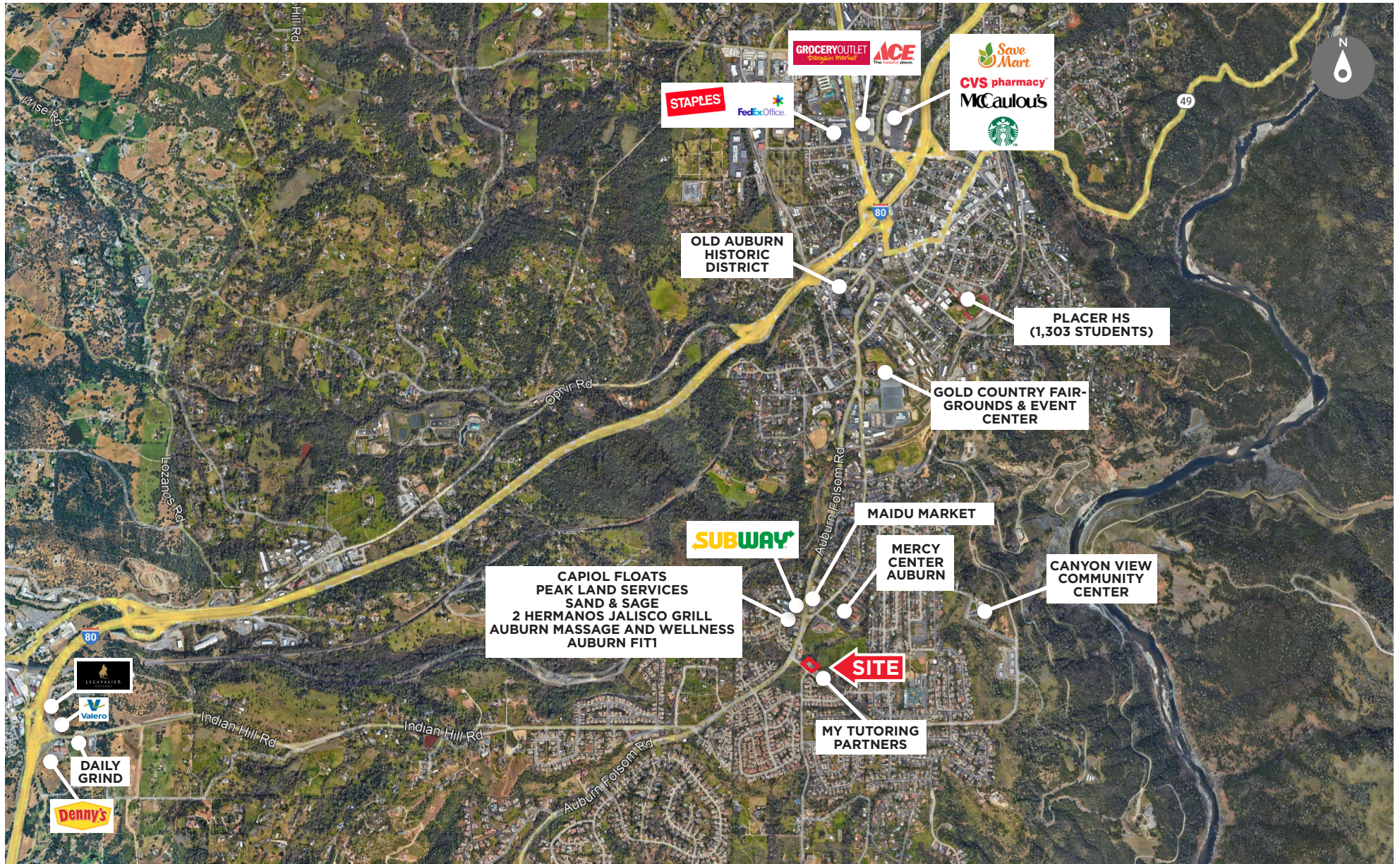


MAIDU PROFESSIONAL PARK

1101 Maidu Drive, Auburn, CA 95603

TRADE AREA MAP

FOR LEASE



MAIDU PROFESSIONAL PARK

1101 Maidu Drive, Auburn, CA 95603

±2,934 SF MEDICAL OFFICE SPACE AVAILABLE

FOR LEASE

Chad Cook, MCR, SIOR, CCIM
Senior Director

chad.cook@cushwake.com

+1 916 764 1181

CA Lic. #01711687

Zach Mosle, CCIM
Director

zach.mosle@cushwake.com

+1 925 683 6822

CA Lic. #01924595

[CUSHMANWAKEFIELD.COM](https://www.cushmanwakefield.com)



©2025 Cushman & Wakefield. All rights reserved. The information contained in this communication is strictly confidential. This information has been obtained from sources believed to be reliable but has not been verified. NO WARRANTY OR REPRESENTATION, EXPRESS OR IMPLIED, IS MADE AS TO THE CONDITION OF THE PROPERTY (OR PROPERTIES) REFERENCED HEREIN OR AS TO THE ACCURACY OR COMPLETENESS OF THE INFORMATION CONTAINED HEREIN, AND SAME IS SUBMITTED SUBJECT TO ERRORS, OMISSIONS, CHANGE OF PRICE, RENTAL OR OTHER CONDITIONS, WITHDRAWAL WITHOUT NOTICE, AND TO ANY SPECIAL LISTING CONDITIONS IMPOSED BY THE PROPERTY OWNER(S). ANY PROJECTIONS, OPINIONS OR ESTIMATES ARE SUBJECT TO UNCERTAINTY AND DO NOT SIGNIFY CURRENT OR FUTURE PROPERTY PERFORMANCE.