

FOR LEASE

11201 GOLD EXPRESS

GOLD RIVER, CA

@pappasinvestments
www.pappasinvestments.com



2ND FLOOR OFFICE UNITS
AVAILABLE 400 SF - 4,804 SF

KELLY RULE | BRE# 01173419

m 314-954-7735 | d 916-465-8843
e krule@pappasinvestments.com

01

PROJECT HIGHLIGHTS

LOCATION OVERVIEW

- Higher Income demographic
- Excellent visibility from Sunrise Blvd
- Easy access to Highway 50
- Co-tenancy with Bank of America
- Walkability and close proximity to various amenities including restaurants and shopping centers



JACKS URBAN EATS



DEMOGRAPHICS

1.5 MILE

3 MILE

5 MILE

RESIDENTIAL POPULATION 20,972 77,101 252,014

AVG. HOUSEHOLD INCOME \$203,620 \$137,737 \$121,203

DAYTIME POPULATION 12,255 37,959 99,248

TRAFFIC COUNTS

SUNRISE BLVD 18,473 CPD

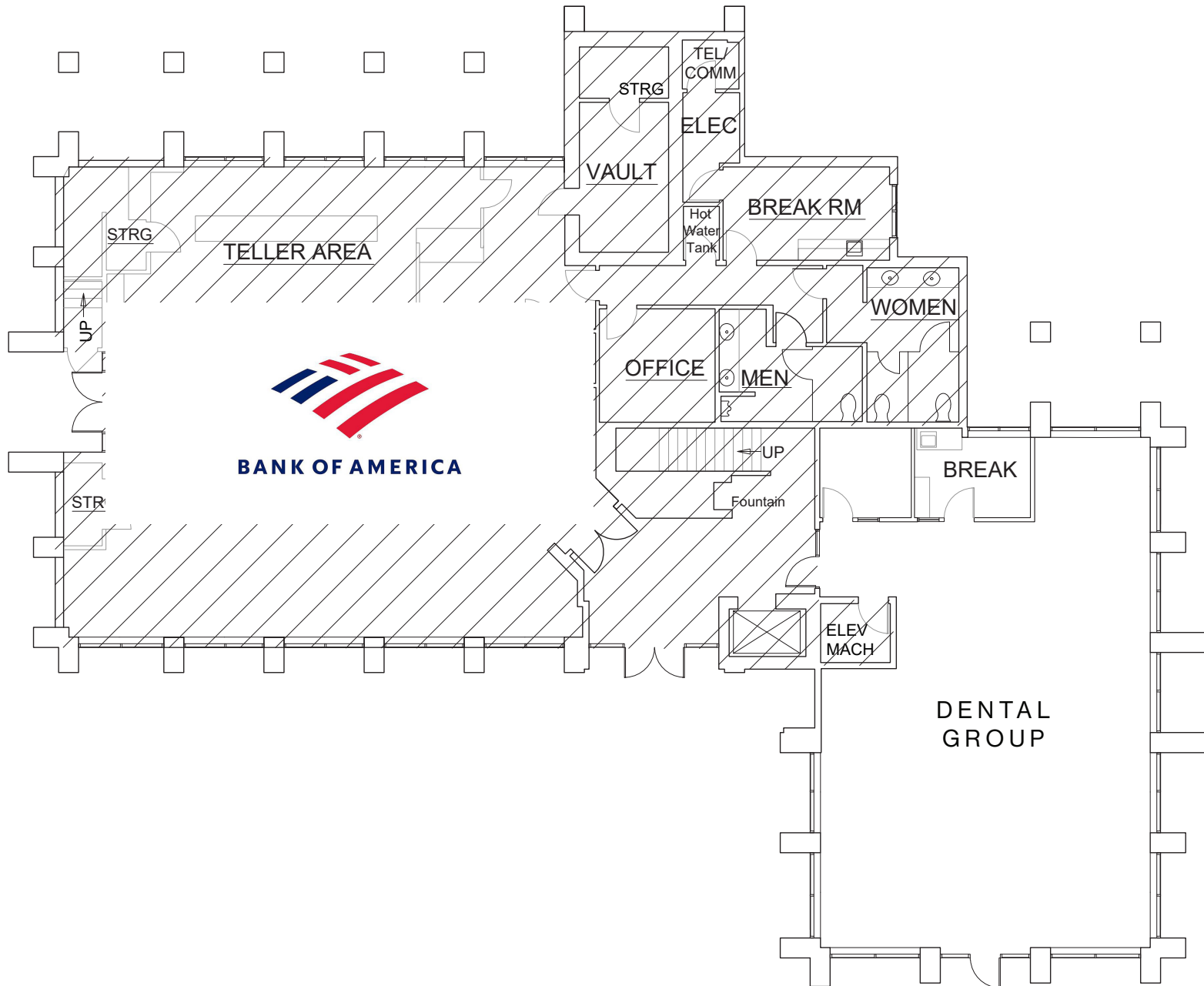
GOLD EXPRESS DRIVE 2,319 CPD

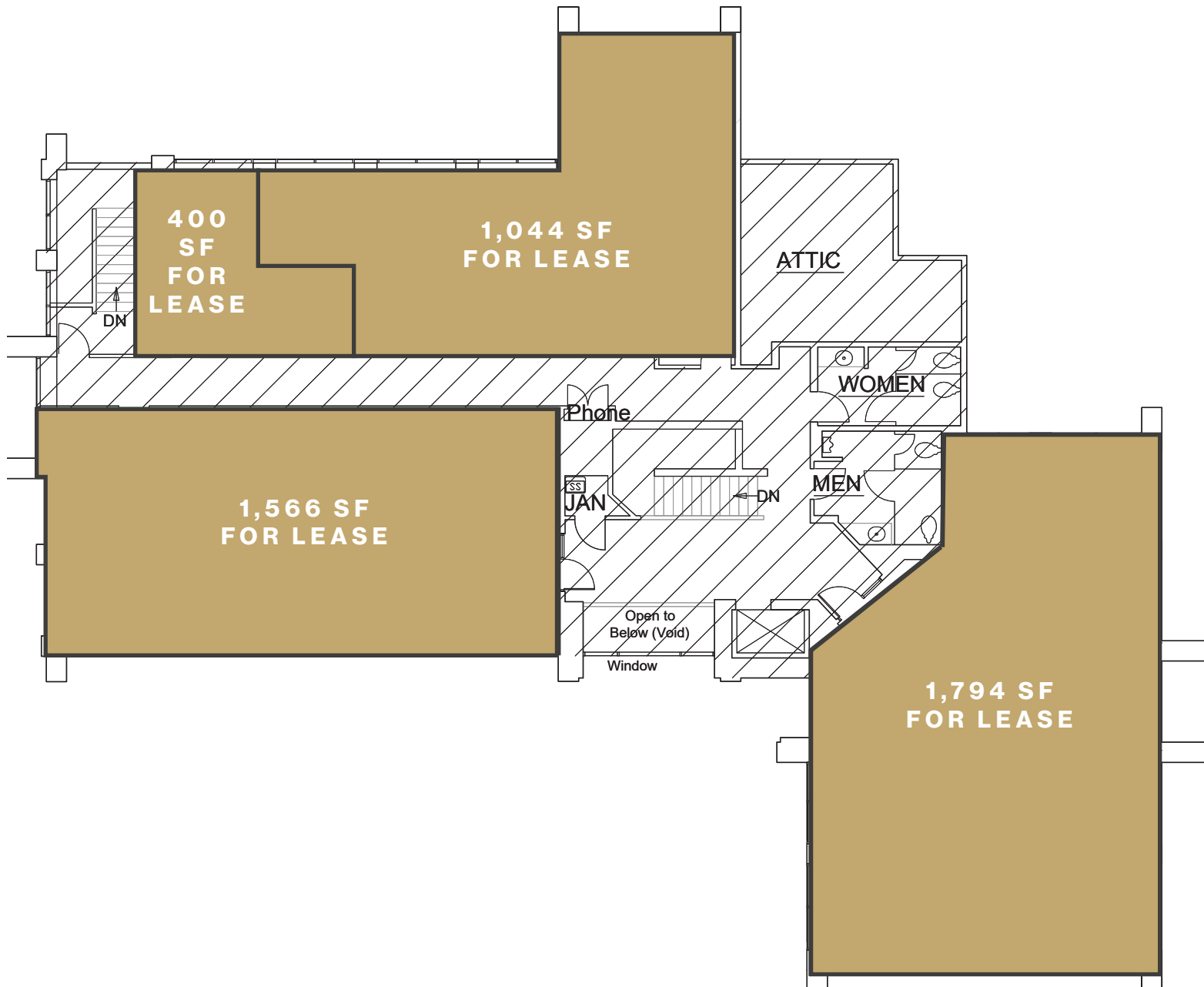
FWY 50 146,016 CPD



FLOOR PLAN – GROUND FLOOR

1,780 SF
FOR LEASE









FOR LEASE



11201 GOLD EXPRESS

GOLD RIVER, CA

KELLY RULE | BRE# 01173419

m 314-954-7735 | **d** 916-465-8843

e krule@pappasinvestments.com

  @pappasinvestments
www.pappasinvestments.com

