

29-76 NORTHERN BOULEVARD

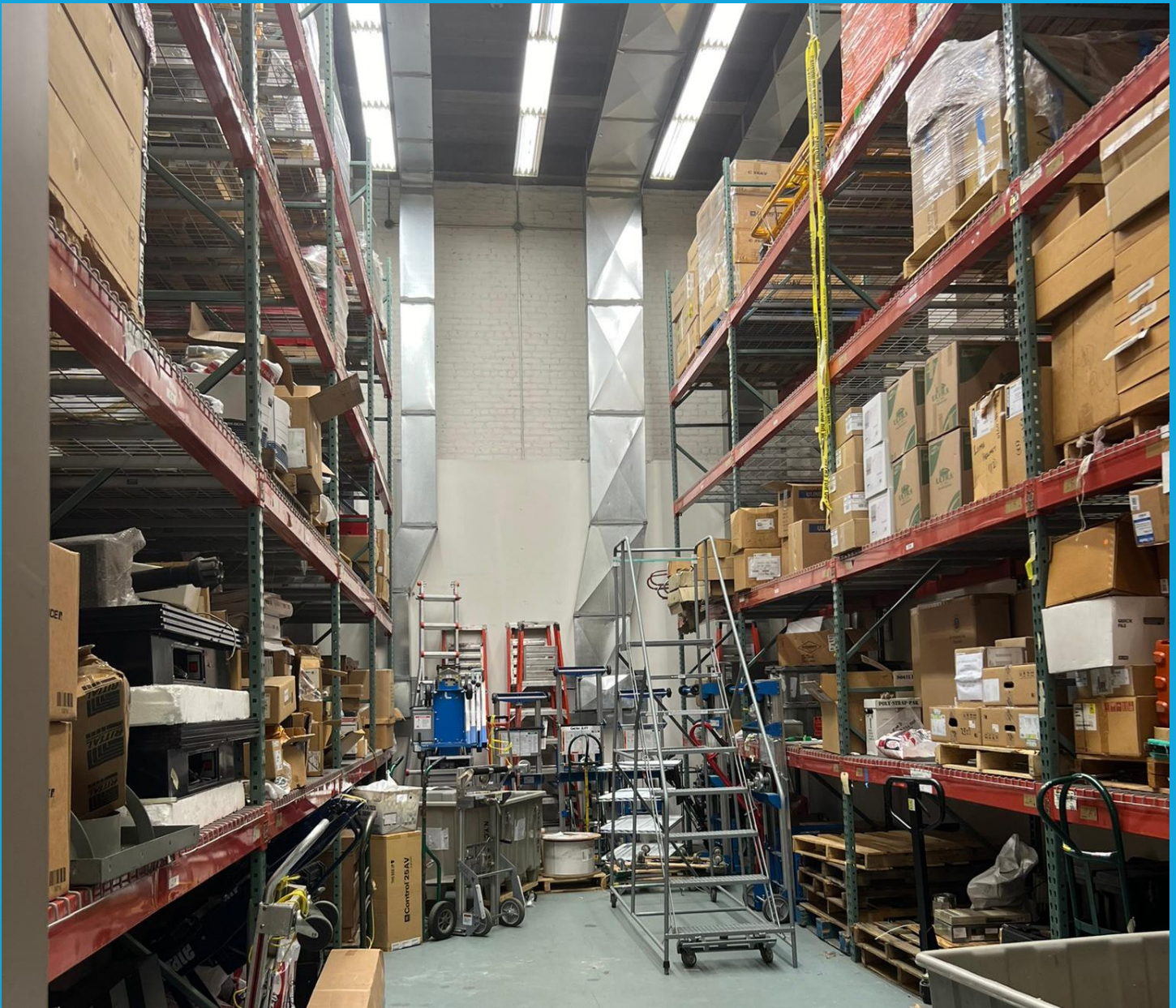
29-76 NORTHERN BOULEVARD | QUEENS PLAZA | LONG ISLAND CITY



16,770 RSF for Lease

GROUND FLOOR | WAREHOUSE SPACE





16-25 FT
ceiling height

2
loading docks

400 Amps
power + gas heat

24/7
building access

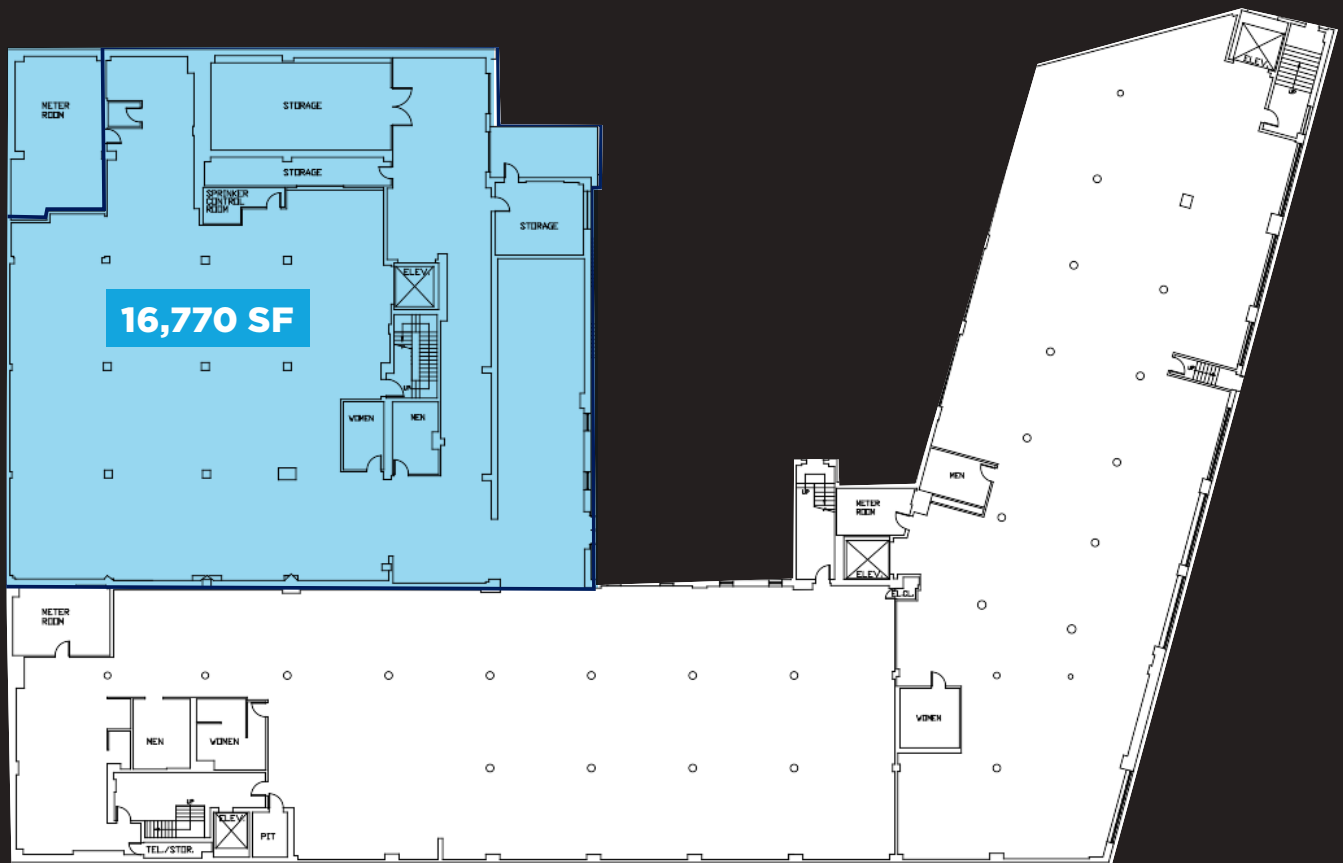
Features

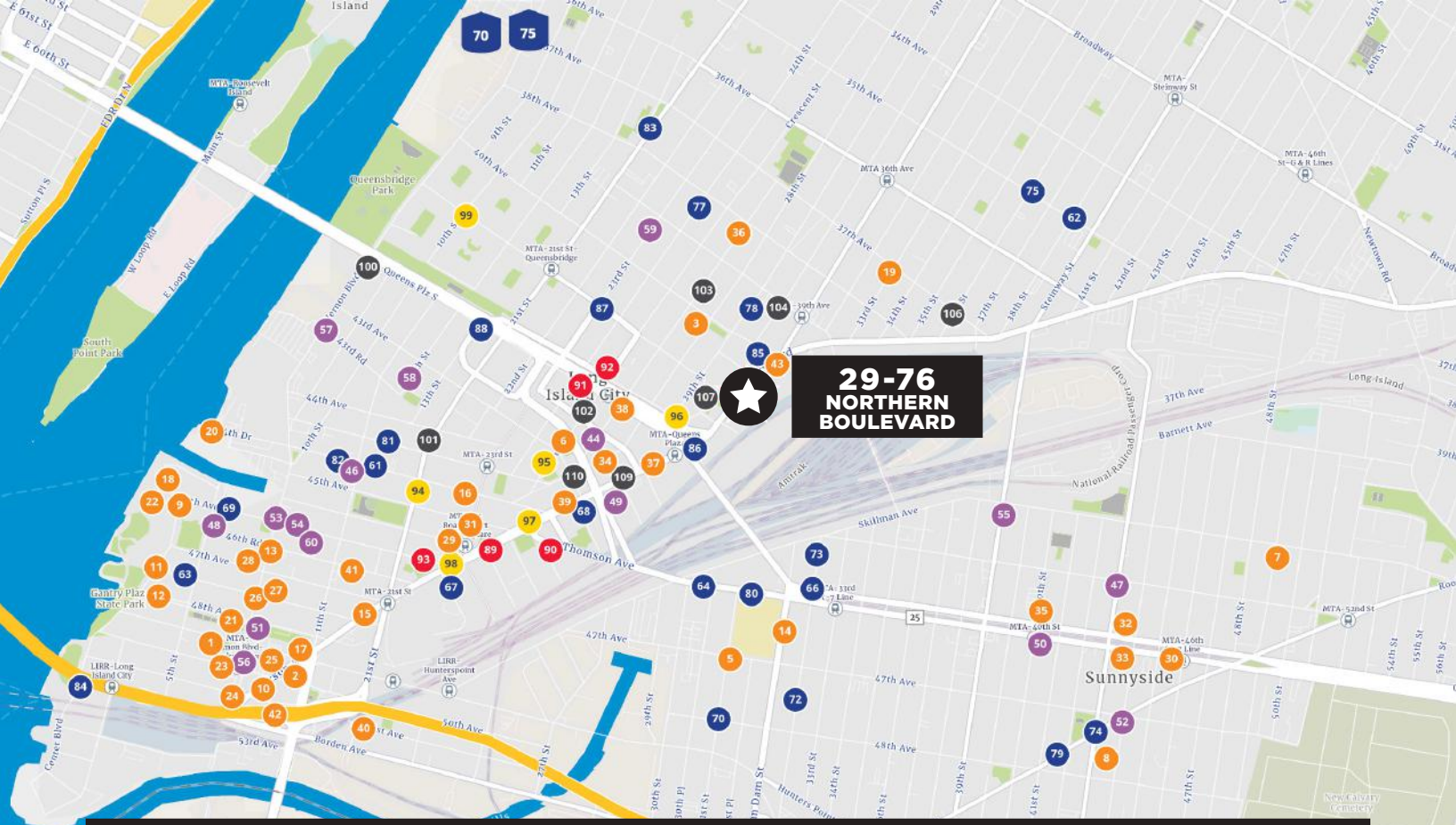
- ✓ ground floor with direct access
- ✓ private bathrooms
- ✓ mostly air-conditioned space
- ✓ on-site parking available
- ✓ high speed internet
- ✓ just one block to 7/E/M/N/R/W
- ✓ flexible design per tenants needs



16,770 RSF TOTAL SPACE ON THE GROUND FLOOR.

SPACE IS NOT DIVISIBLE.
FOR DIVISIBLE OPTIONS, INQUIRE ABOUT FLOOR 4





**29-76
NORTHERN
BOULEVARD**

RESTAURANTS/COFFEE

- 1 Casa Enrique
- 2 Hibino
- 3 John Brown Smokehouse
- 4 Doughnut Plant
- 5 Sans Bakery
- 6 M. Wells Steakhouse
- 7 The Alcove
- 8 I Love Paraguay
- 9 Sweetleaf Cocktails
- 10 Cafe Henri
- 11 Shi
- 12 Skinny's Cantina
- 13 Manducatis Rustica
- 14 Van Dam Diner
- 15 Manducatis
- 16 Il Falco
- 17 Manetta's
- 18 Blend on the Water
- 19 Astoria Seafood
- 20 Anable Basin Sailing Bar & Grill
- 21 Slice
- 22 Maiella
- 23 Takumen
- 24 Tournesol
- 25 Tuk Tuk
- 26 Chairman Sun
- 27 Bellwether
- 28 Petey's Burger
- 29 Court Square Diner
- 30 Alpha Donuts
- 31 The Inkan
- 32 Brookside Market
- 33 Mad Cafe
- 34 No Stress Coffee
- 35 Barui's Coffee Store
- 36 Beebe's
- 37 Jack & Co.
- 38 Clever Blend Lic
- 39 Partners Coffee
- 40 Coffee Project / Academy
- 41 Communitea
- 42 Jackson's Eatery | Bar
- 43 Apple Gourmet Deli

BARS & BREWERIES

- 44 The Beast Next Door
- 45 LIC Beer Project
- 46 The Shannon Pot
- 47 Bar 43
- 48 Rockaway Brewing Co.
- 49 Dutch Kills
- 50 The Courtyard Alehouse
- 51 Dominic's Hoek
- 52 Greenpoint Lounge
- 53 L.I.C. Bar
- 54 The Gutter
- 55 Alewife
- 56 Domaine bar a vins
- 57 Big Alice Brewing
- 58 Focal Point
- 59 LIC Beer Project
- 60 Fifth Hammer Brewing

CULTURE/HEALTH & WELLNESS

- 61 The Cliffs at LIC
- 62 The Yoga Room
- 63 Gantry State Park Plaza
- 64 Bard Early Colleges
- 65 LaGuardia Community College
- 66 Long Island City YMCA
- 67 MoMA PS1
- 68 Sculpture Center
- 69 LIC Flea & Food
- 70 Pepsi-Cola Sign
- 71 Socrates Sculpture Park
- 72 City Ice Pavilion
- 73 CityView Racquet Club
- 74 Queens Library at Sunnyside Library
- 75 Museum of the Moving Image
- 76 The Noguchi Museum
- 77 The Chocolate Factory Theater
- 78 Flux Factory
- 79 Thalia Spanish Theatre
- 80 LaGuardia Performing Arts Center
- 81 Local Project Art Space
- 82 BrickHouse Ceramic Art Center
- 83 Queens Library at Long Island City
- 84 Hunter's Point South Park
- 85 Powerhouse Gym Long Island City
- 86 Planet Fitness
- 87 Brooklyn Boulders Queensbridge
- 88 Court 16 LIC - Tennis Remixed

BANKS

- 89 Bank of America
- 90 Citibank
- 91 Chase Bank
- 92 Citizens
- 93 TD Bank

GROCERY

- 94 Key Food
- 95 Foodcellar Market
- 96 Hudson Food Market
- 97 Target
- 98 Trader Joe's
- 99 Fine Fare Supermarkets

HOTELS

- 100 Ravel Hotel
- 101 LIC Hotel
- 102 Red Lion Inn & Suites
- 103 Sonder The Dutch
- 104 The Collective Paper Factory
- 105 Hilton Garden Inn
- 106 Courtyard by Marriott
- 107 Aloft Long Island City

JOSEPH MEYERSON
SENIOR VICE PRESIDENT
COLLIERS
914.420.2990
JOSEPH.MEYERSON@COLLIERS.COM
LICENSED ASSOCIATE REAL ESTATE BROKER

GAIL ROSEMAN
EXECUTIVE VICE PRESIDENT
SHOLOM & ZUCKERBROT REALTY LLC
718.371.0125
GROSEMAN@S-Z.COM
LICENSED ASSOCIATE REAL ESTATE BROKER



COLLIERS INTERNATIONAL CT, LLC
1055 WASHINGTON BLVD, 8TH FL
STAMFORD, CT 06901

No representation is made as to the accuracy of the information furnished herein and same is submitted subject to errors, omissions, change of prices, rental, or other conditions, prior sale, lease, sublease, and/or withdrawal without notice. While every attempt is made to ensure accuracy, the floor plan(s) is for guidance only. The measurements, dimensions, specifications, and other data shown are approximate and may not be to scale. We assume no responsibility for the accuracy of the floor plan(s) or for any action taken in reliance thereon. The floor plan(s) do not create any representation, warranty or contract. All parties should consult a professional, such as an architect, to verify the information contained herein. The furnishing of this information shall not be deemed a hiring. A commission in accordance with our principal's schedule of rates and conditions will be paid to the procuring Broker who executes our or our principal's brokerage agreement, subject to a fully consummated transaction upon terms and conditions acceptable to our principal, Colliers International CT, LLC.