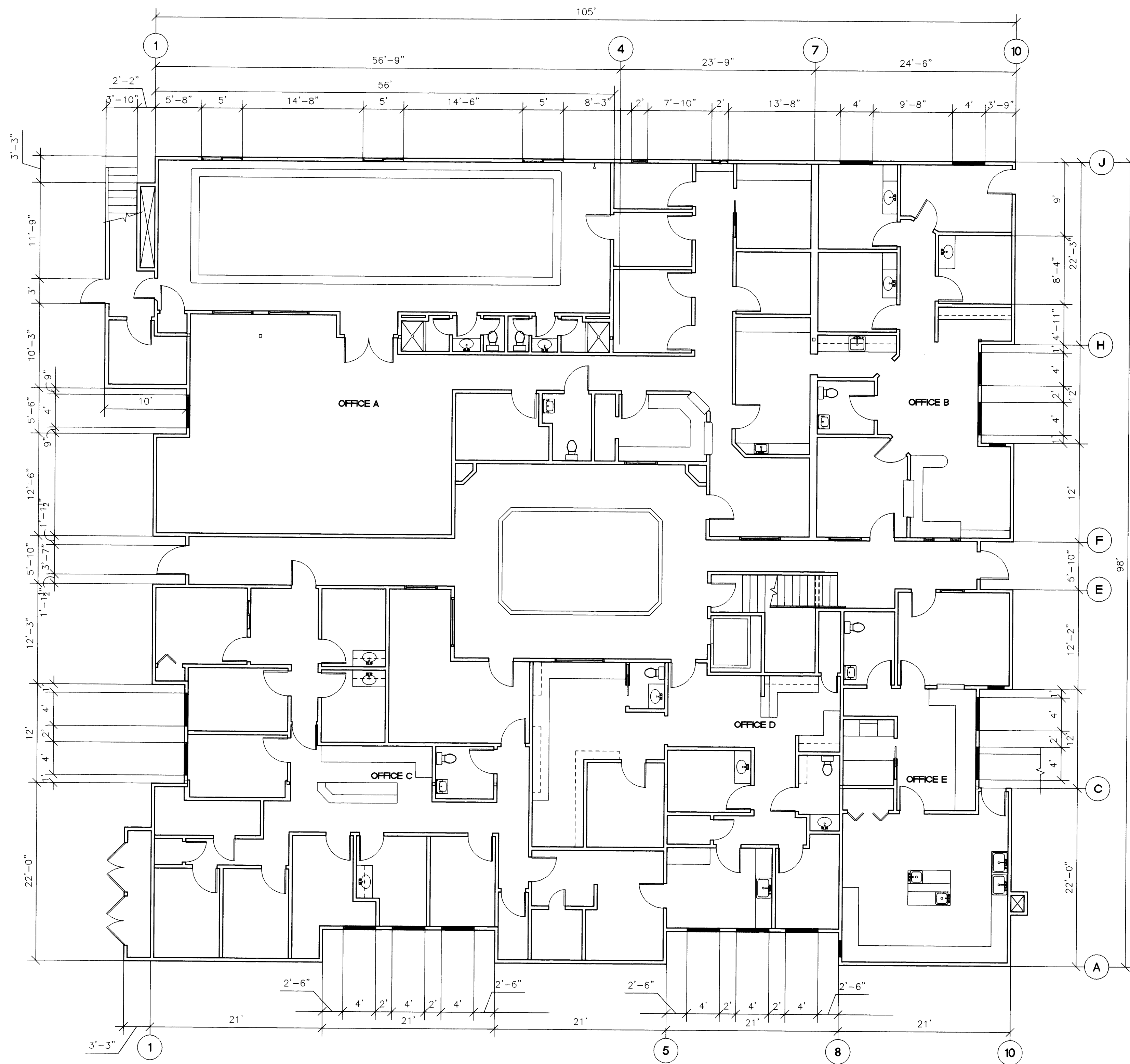


REV.	DATE	BY

ROHNERT PARK MEDICAL CENTER
 1331 MEDICAL CENTER DRIVE
 ROHNERT PARK, CA.

FIRST FLOOR
 OFFICE CONFIGURATIONS



AREA SQUARE FOOTAGES PER OFFICE
 OFFICE A&B = 4341 S.F.
 OFFICE C = 1835 S.F.
 OFFICE D = 1273 S.F.
 OFFICE E = 841 S.F.
 AREAS ARE MEASURED FROM FACE OF INTERIOR WALLS IN EACH OFFICE SPACE

FIRST FLOOR
 1/8"=1'-0"

NOTE: DIMENSIONS ARE FOR GENERAL REFERENCE ONLY. FIELD VERIFY ALL DIMENSIONS AFFECTING NEW CONSTRUCTION

DATE: 08/01/06

SCALE: 1/8"=1'-0"

DRAWN: MJ

PROJECT NO. NAIBT

SHEET

A1

OF 2 SHEETS