

±3,865 SF OFFICE/ RETAIL SPACE

Available for Sublease

801 NATIONAL CITY BLVD,
NATIONAL CITY, CA 91950

MARY KAY BIER
858.232.0293
marykay.bier@kidder.com
LIC N° 01406206

KIDDER.COM



km Kidder
Mathews



POPULATION:
459,758



**DAYTIME
POPULATION:**
484,205



**AVERAGE
HH INCOME:**
\$98,069



MEDIAN AGE:
34.1 YRS



**TOTAL
HOUSEHOLDS:**
155,326



**1 MILE TO
THE PACIFIC
OCEAN**

VACANT SPACE

One (1) ±3,865 SF space currently available for sublease (divisible to ±1,400-3,865)

FREEWAY ACCESS

Located directly off I-5 with heavy traffic counts of 208,000 cars per day

**STRONG LOCATION
WITH PARKING**

Positioned on the corner of National City Blvd and East 8th Street, the commercial spaces are located on new major arterial streets and have twenty-seven (27) dedicated parking stalls in the rear of the project

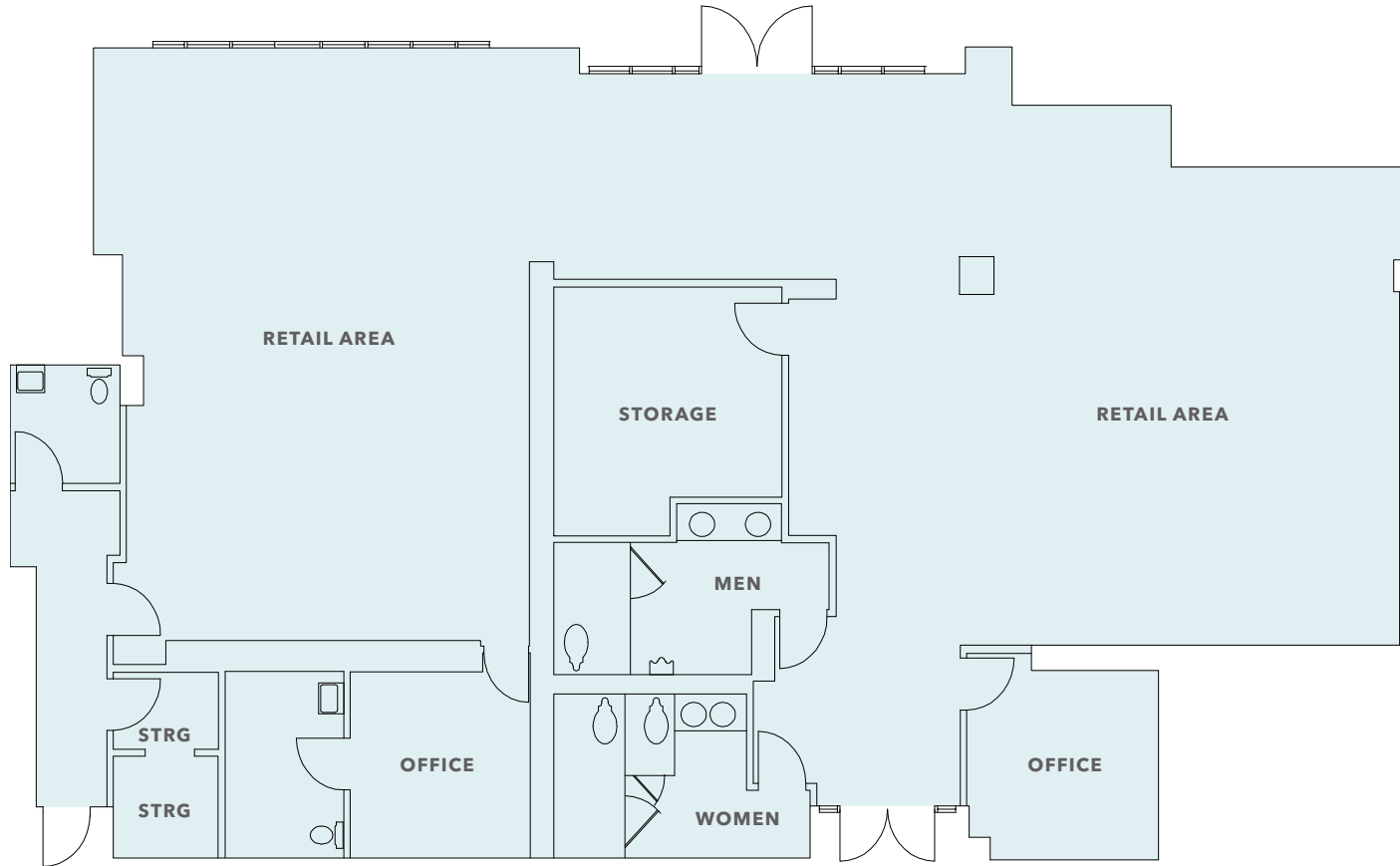
AVAILABILITY

Suites 102-103

SUBLEASE RATE

\$2.00/SF

SUITES 102-103



±3,865 SF

AVAILABLE

DIVISIBLE

±1,400-3,865 SF

\$2.00/SF

SUBLEASE RATE



SUBJECT PROPERTY

NATIONAL CITY

WESTFIELD PLAZA BONITA



801 NATIONAL CITY BLVD

*For more information on
this property, please contact*

MARY KAY BIER
858.232.0293
marykay.bier@kidder.com
LIC N° 01406206

KIDDER.COM

This information supplied herein is from sources we deem reliable. It is provided without any representation, warranty, or guarantee, expressed or implied as to its accuracy. Prospective Buyer or Tenant should conduct an independent investigation and verification of all matters deemed to be material, including, but not limited to, statements of income and expenses. Consult your attorney, accountant, or other professional advisor. All Kidder Mathews designs are the sole property of Kidder Mathews. Branded materials and layouts are not authorized for use by any other firm or person.

