

FOR LEASE

ADAMO DISTRIBUTION CENTER

4410-4450 E ADAMO DRIVE, TAMPA, FL 33605



DOWNTOWN TAMPA

SELMON EXPRESSWAY

E ADAMO DRIVE



ADAMO DISTRIBUTION CENTER



PROPERTY HIGHLIGHTS

Adamo Distribution Center consists of five warehouses totaling 304,207 SF in the heart of East Tampa's industrial submarket. The park has frontage on the Selmon Expressway with easy access to Downtown Tampa, Tampa International Airport, Port Tampa Bay along with major distribution routes I-4, I-75, and I-275.

PROPERTY FEATURES

	TOTAL SF	LOAD TYPE	CLEAR HEIGHT	BLDG DIMENSIONS
Building 2	101,744 SF	Front-Load	22'	200' x 490'
Building 3	26,650 SF	Rear-Load	20'	120' x 250'
Building 4	64,551 SF	Rear-Load	22'	225' x 300'
Building 5	64,800 SF	Rear-Load	22'	180' x 300'
Building 6	46,462 SF	Rear-Load	22'	245' x 235'

SITE PLAN



CURRENT AVAILABILITIES

BUILDING	NUMBER	SF	CLEAR HEIGHT	LOADING	OCCUPANCY
BUILDING 2	SUITE 106	32,130 SF	22'	(6) DOCK-HIGH DOORS	6/1/2026
BUILDING 4	SUITE 305	20,000 SF	22'	(3) DOCK-HIGH DOORS (1) DRIVE-IN RAMP	5/1/2026
BUILDING 5	SUITE 403	8,500 SF	22'	(2) DOCK-HIGH DOORS (1) DRIVE-IN DOOR	9/1/2026

SUITE 106

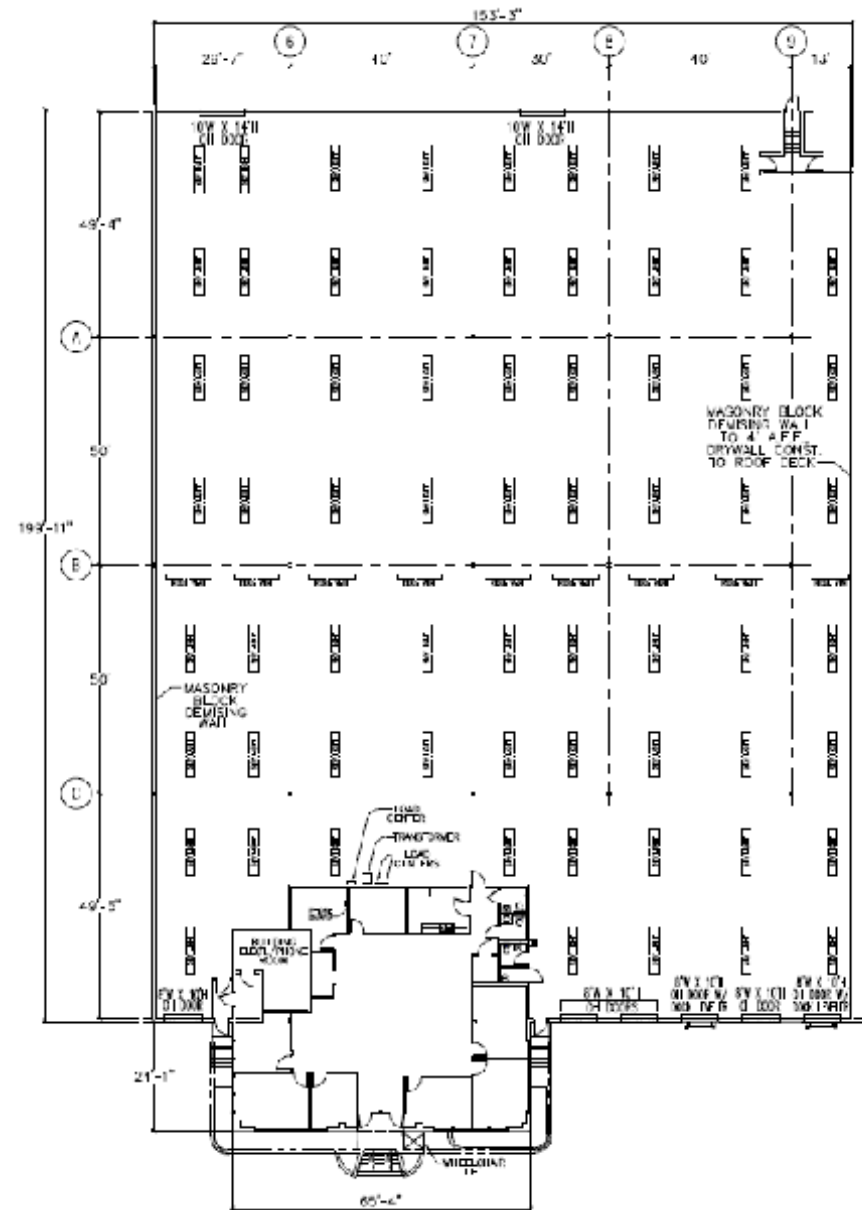
TOTAL SF 32,130 SF

OFFICE SF 2,975 SF

LOADING Six (6) Dock High Doors

CLEAR HEIGHT 22'

AVAILABLE 6/1/2026



SUITE 305

TOTAL SF 20,000 SF

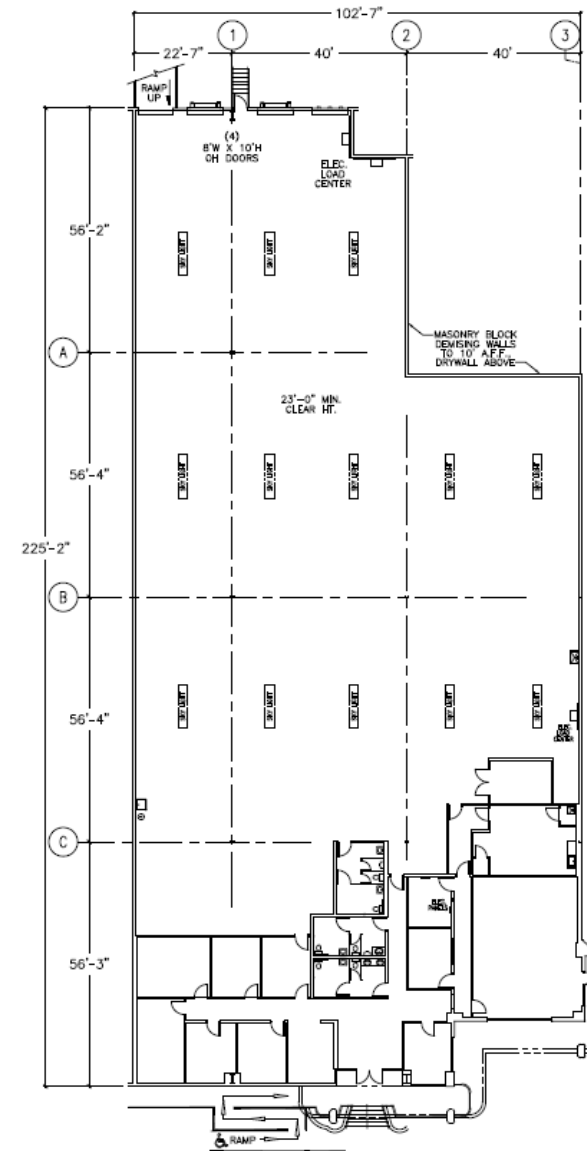
OFFICE SF 4,524 SF

LOADING Three (3) Dock High Doors
One (1) Drive-in Ramp

CLEAR HEIGHT 22'

CLIMATE CONTROL Fully Air-Conditioned
Warehouse

AVAILABLE 5/1/2026



SUITE 403

TOTAL SF 8,500 SF

OFFICE SF 1,900 SF

LOADING Two (2) Dock High Doors
One (1) Drive in Door

CLEAR HEIGHT 22'

AVAILABLE 9/1/2026



LOCATION HIGHLIGHTS



DOWNTOWN
TAMPA

PORT
TAMPA BAY

ADAMO
DISTRIBUTION
CENTER

5 MIN

TO INTERSTATE 4

7 MIN

TO INTERSTATE 275

10 MIN

TO INTERSTATE 75

25 MIN

TO ST-PETE-CLEARWATER
INTERNATIONAL AIRPORT

14 MIN

TO TAMPA
INTERNATIONAL AIRPORT

10 MIN

TO PORT
TAMPA BAY



FOR MORE INFORMATION, CONTACT:

LISA ROSS, SIOR
Executive Director
+1 813 760 3209
lisa.ross@cushwake.com

TREY CARSWELL, SIOR
Executive Director
+1 813 230 6131
trey.carswell@cushwake.com

SAM KOROLOS
Director
+1 704 989 1327
sam.korolos@cushwake.com

MELISSA WATTERWORTH
Senior Associate
+1 813 599 2190
melissa.watterworth@cushwake.com



©2025 Cushman & Wakefield. All rights reserved. The information contained in this communication is strictly confidential. This information has been obtained from sources believed to be reliable but has not been verified. NO WARRANTY OR REPRESENTATION, EXPRESS OR IMPLIED, IS MADE AS TO THE CONDITION OF THE PROPERTY (OR PROPERTIES) REFERENCED HEREIN OR AS TO THE ACCURACY OR COMPLETENESS OF THE INFORMATION CONTAINED HEREIN, AND SAME IS SUBMITTED SUBJECT TO ERRORS, OMISSIONS, CHANGE OF PRICE, RENTAL OR OTHER CONDITIONS, WITHDRAWAL WITHOUT NOTICE, AND TO ANY SPECIAL LISTING CONDITIONS IMPOSED BY THE PROPERTY OWNER(S). ANY PROJECTIONS, OPINIONS OR ESTIMATES ARE SUBJECT TO UNCERTAINTY AND DO NOT SIGNIFY CURRENT OR FUTURE PROPERTY PERFORMANCE.