



Specifications

±12,000 SF TOTAL BUILDING SIZE	±6,000 SF AVAILABLE SPACE
6 Office Units OFFICE	Renovated FACILITY
2 Docks LOADING	±1.10 AC LOT SIZE
11' Clear CEILING HEIGHT	I-1 ZONING
23 Parking Spaces PARKING	Please Call LEASE RATE
3 Phase (1200 Amps) POWER	
Ideal for Manufacturing Use Climate Controlled Facility New HVAC System 10 Ton, 20 Ton, & 3 Ton Units 10 Ton Split System HIGHLIGHTS	

For additional property information or to arrange an inspection, please contact the exclusive brokers:

- Jason M. Crimmins, CCIM, SIOR, Chief Executive Officer, 973.379.6644 x 122, jmcrimmins@blauberg.com**
- Alessandro (Alex) Conte, CCIM, SIOR, President, 973.379.6644 x 131, acont@blauberg.com**
- Peter J. Murano, Jr., Managing Executive Director, 973.379.6644 x 114, pjmurano@blauberg.com**
- Troy Schaafsma, SIOR, Executive Director, 973.379.6644 x 116, troys@blauberg.com**

FOR LEASE | 19 WEST STREET | EAST HANOVER, NJ



For additional property information or to arrange an inspection, please contact the exclusive brokers:

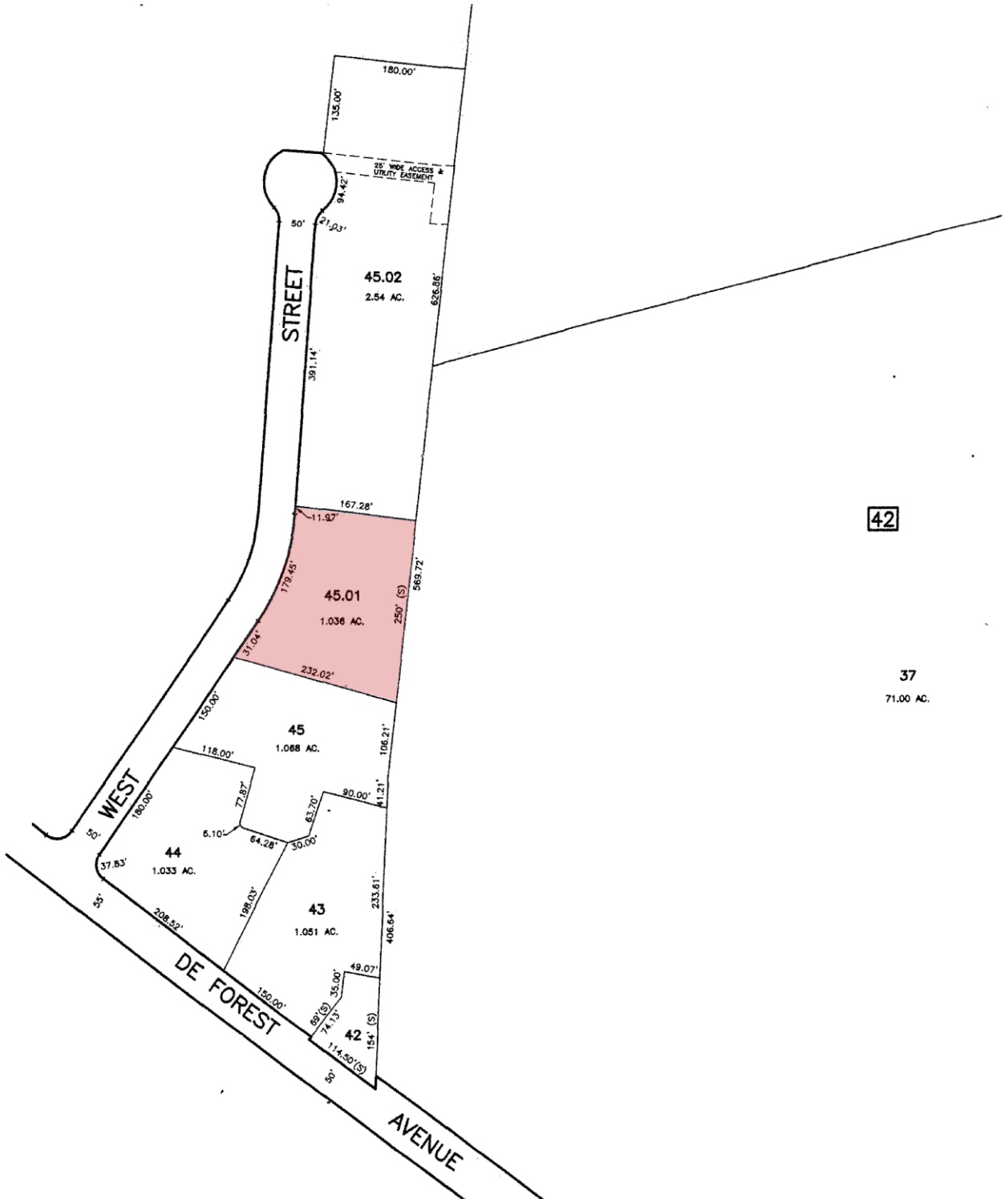
Jason M. Crimmins, CCIM, SIOR, Chief Executive Officer, 973.379.6644 x 122, jmcrimmins@blauberg.com

Alessandro (Alex) Conte, CCIM, SIOR, President, 973.379.6644 x 131, aconte@blauberg.com

Peter J. Murano, Jr., Managing Executive Director, 973.379.6644 x 114, pjmurano@blauberg.com

Troy Schaafsma, SIOR, Executive Director, 973.379.6644 x 116, troys@blauberg.com

The information contained herein has been obtained from sources considered to be reliable, but no guarantee of its accuracy is made by this company. In addition, no representation is made respecting zoning, condition of title, dimensions, or any matters of a legal or environmental nature. Such matters should be referred to legal counsel for determination. Terms and conditions are subject to change without prior notice. Subject to errors and omissions.



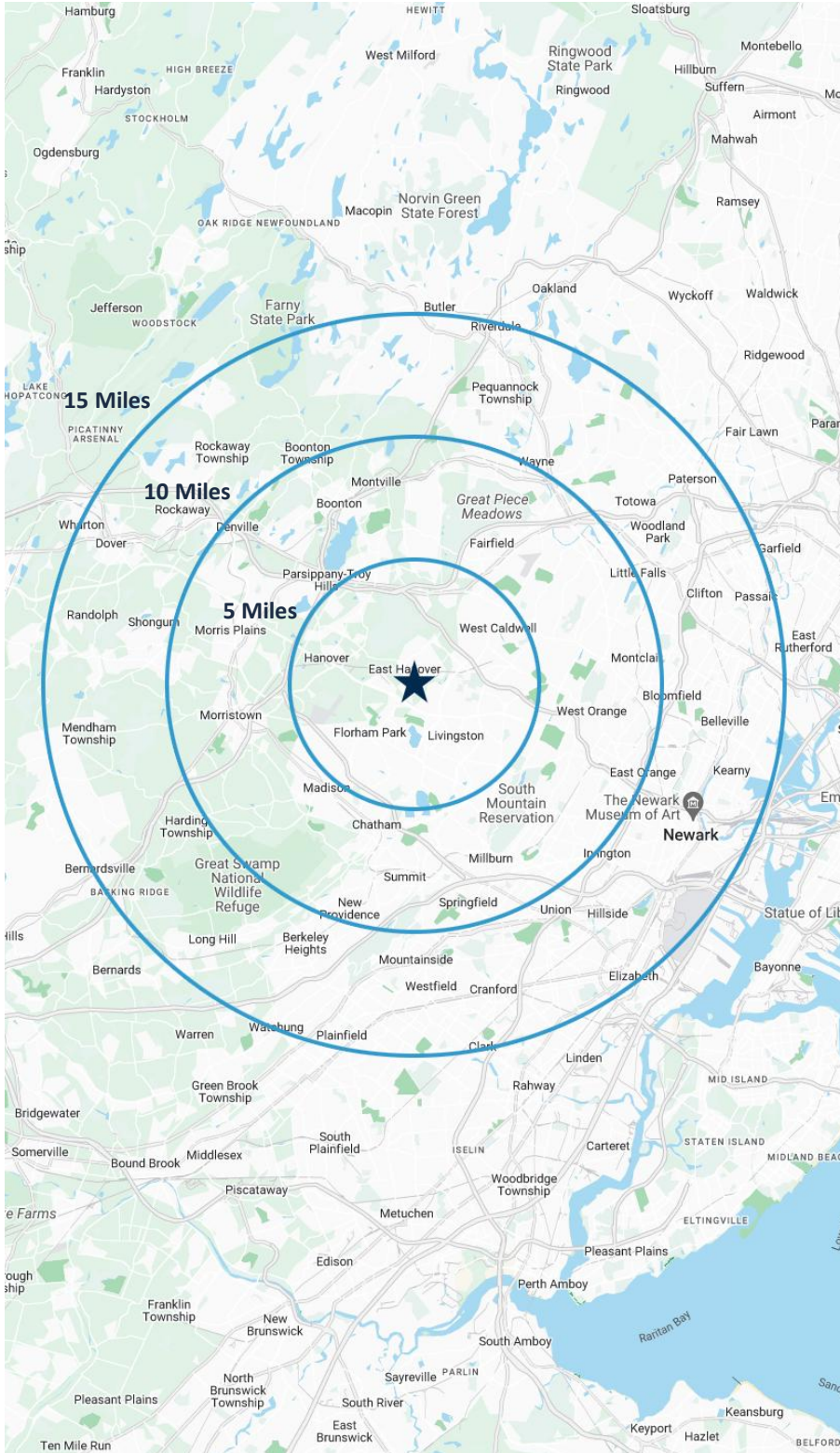
42

37
71.00 AC.

For additional property information or to arrange an inspection, please contact the exclusive brokers:

- Jason M. Crimmins, CCIM, SIOR, Chief Executive Officer, 973.379.6644 x 122, jmcrimmins@blauberg.com
- Alessandro (Alex) Conte, CCIM, SIOR, President, 973.379.6644 x 131, acont@blauberg.com
- Peter J. Murano, Jr., Managing Executive Director, 973.379.6644 x 114, pjmurano@blauberg.com
- Troy Schaafsma, SIOR, Executive Director, 973.379.6644 x 116, troys@blauberg.com

The information contained herein has been obtained from sources considered to be reliable, but no guarantee of its accuracy is made by this company. In addition, no representation is made respecting zoning, condition of title, dimensions, or any matters of a legal or environmental nature. Such matters should be referred to legal counsel for determination. Terms and conditions are subject to change without prior notice. Subject to errors and omissions.



5 MILES

- Total Population: 152,359
- Households: 57,370
- Median Household Income: \$160,028
- Average Household Size: 2.6
- Transportation to Work: 83,068
- Labor Force: 123,672

10 MILES

- Total Population: 969,419
- Households: 364,659
- Median Household Income: \$133,953
- Average Household Size: 2.6
- Transportation to Work: 518,180
- Labor Force: 778,667

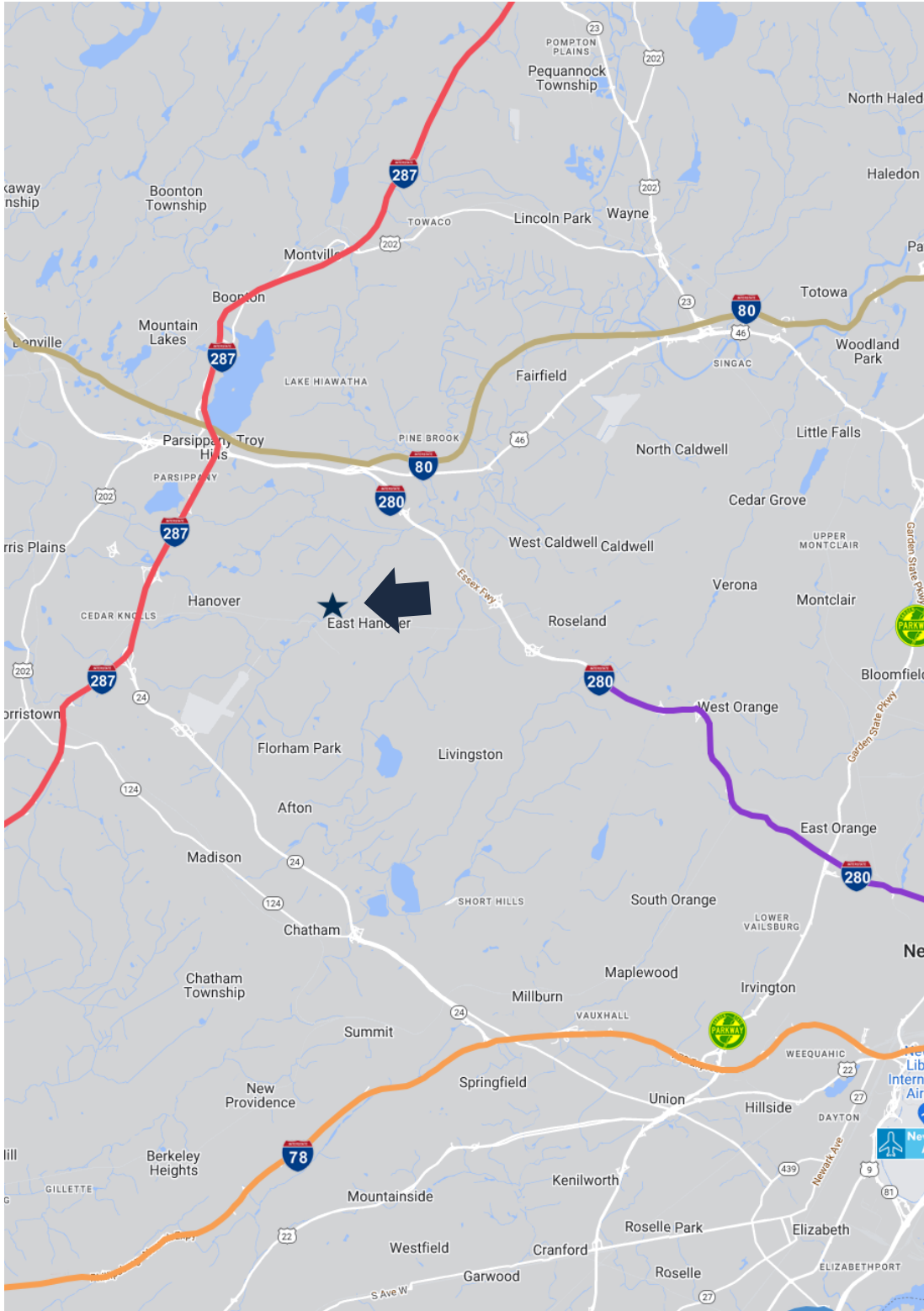
15 MILES

- Total Population: 2.59M
- Households: 946,439
- Median Household Income: \$113,491
- Average Household Size: 2.7
- Transportation to Work: 1.36M
- Labor Force: 2.08M

For additional property information or to arrange an inspection, please contact the exclusive brokers:

- Jason M. Crimmins, CCIM, SIOR, Chief Executive Officer**, 973.379.6644 x 122, jmcrimmins@blauberg.com
- Alessandro (Alex) Conte, CCIM, SIOR, President**, 973.379.6644 x 131, aconte@blauberg.com
- Peter J. Murano, Jr., Managing Executive Director**, 973.379.6644 x 114, pjmurano@blauberg.com
- Troy Schaafsma, SIOR, Executive Director**, 973.379.6644 x 116, troys@blauberg.com

The information contained herein has been obtained from sources considered to be reliable, but no guarantee of its accuracy is made by this company. In addition, no representation is made respecting zoning, condition of title, dimensions, or any matters of a legal or environmental nature. Such matters should be referred to legal counsel for determination. Terms and conditions are subject to change without prior notice. Subject to errors and omissions.



ACCESSIBILITY

	1.0 MI NJ Route 10
	3.5 MI I-280
	5.5 MI I-80
	6.0 MI I-287
	11.5 MI I-78

For additional property information or to arrange an inspection, please contact the exclusive brokers:

- Jason M. Crimmins, CCIM, SIOR, Chief Executive Officer, 973.379.6644 x 122, jmcrimmins@blauberg.com**
- Alessandro (Alex) Conte, CCIM, SIOR, President, 973.379.6644 x 131, acont@blauberg.com**
- Peter J. Murano, Jr., Managing Executive Director, 973.379.6644 x 114, pjmurano@blauberg.com**
- Troy Schaafsma, SIOR, Executive Director, 973.379.6644 x 116, troys@blauberg.com**

The information contained herein has been obtained from sources considered to be reliable, but no guarantee of its accuracy is made by this company. In addition, no representation is made respecting zoning, condition of title, dimensions, or any matters of a legal or environmental nature. Such matters should be referred to legal counsel for determination. Terms and conditions are subject to change without prior notice. Subject to errors and omissions.