

THE HISTORIC SPURGEON BUILDING RETAIL SPACE FOR LEASE

±1,811 SF

206

W. 4TH STREET
GROUND FLOOR RETAIL
SANTA ANA,
CALIFORNIA



FOR MORE INFORMATION PLEASE CONTACT:

Scott Ostlund, Principal
D 951.756.4999
sostlund@associatesequityfunds.com
DRE #01009359

Jeff Smith, Principal
D 949.246.0225
jsmith@associatesequityfunds.com
DRE #01186136

BUILDING RENOVATIONS NOW COMPLETE!!!

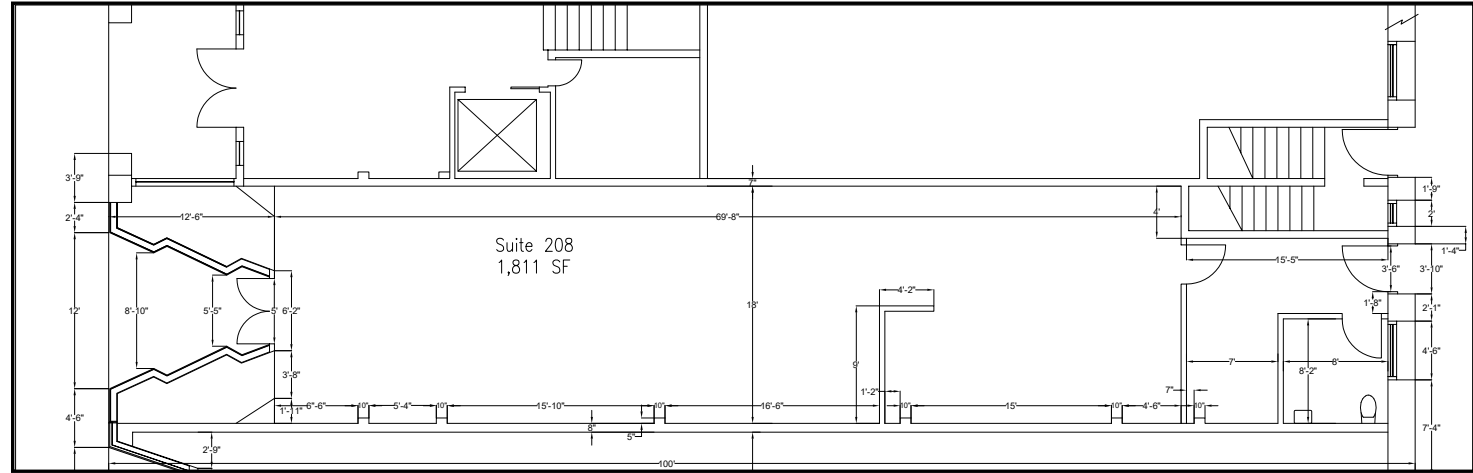
THE
HISTORIC
SPURGEON
BUILDING
RETAIL
SPACE
FOR LEASE

±1,811 SF

206

W. 4TH STREET
GROUND FLOOR RETAIL
SANTA ANA,
CALIFORNIA

FLOOR PLAN • RETAIL SPACE



Available Space and Pricing

SUITE	SF	PRICE
208	±1,811	\$2.75 psf



Please Visit www.spurgeon1913.com for More Information

All information furnished regarding property for sale, rental or financing is from sources deemed reliable, but no warranty or representation is made to the accuracy thereof and some is submitted to errors, omissions, change of price, rental or other conditions prior to sale, lease or financing or withdrawal without notice. No liability of any kind is to be imposed on the broker herein.