



6803 Central Ave, Newark, CA 94560

± 8,000 Sq Ft Industrial Building:

± 4,400 Sq Ft Available For Lease

BISHOP CLANCY COMMERCIAL

BCCRE

David Clancy

Dclancy@bccre.com

408.499.8677

CalBRE# 01252697

Jacob Sanchez

Jacob@bccre.com

408.603.8943

CalBRE# 02064109

BCCRE

1150 S Bascom Ave
Suite 26, San Jose, Ca.

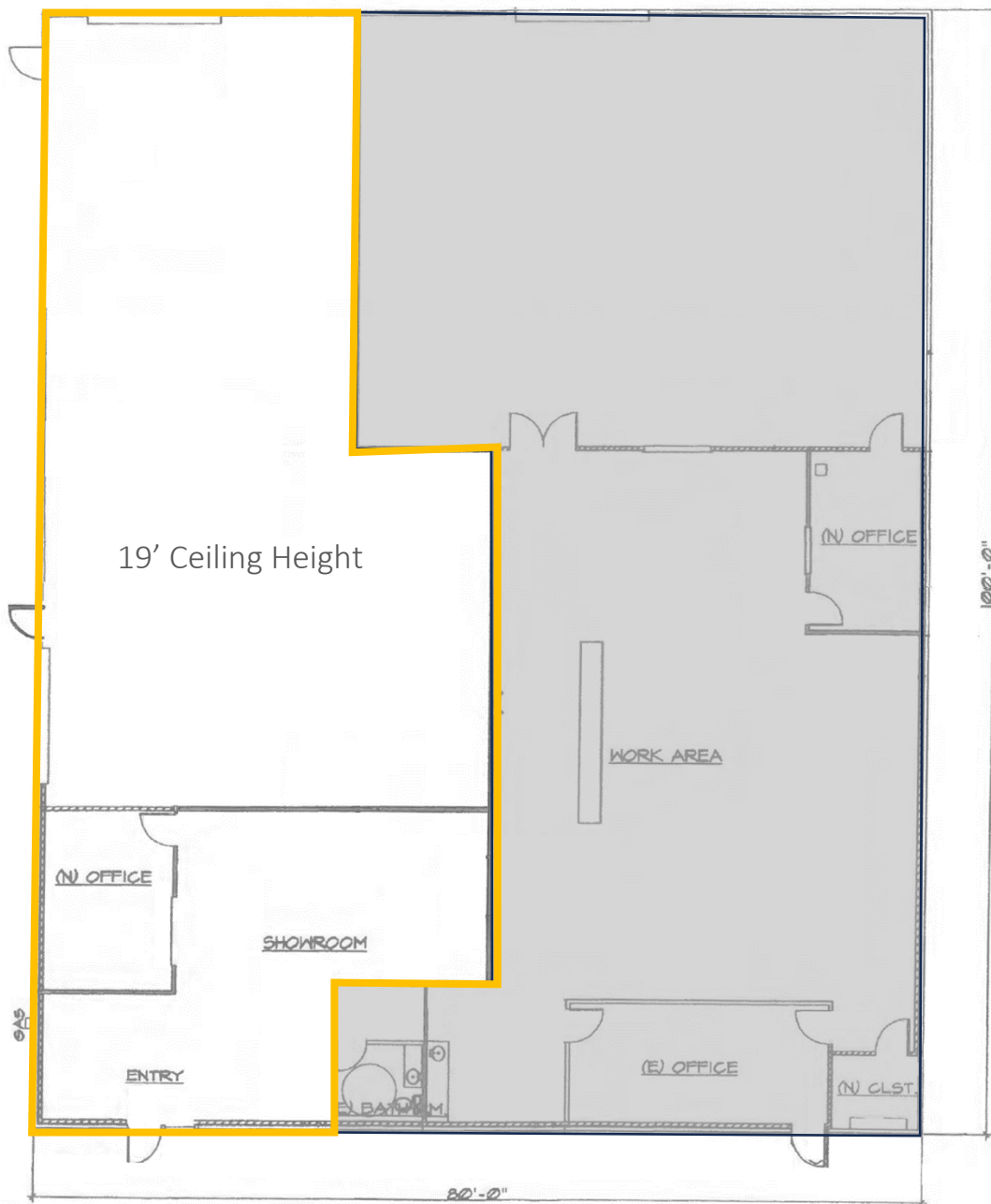
Broker # 01763418

BCCRE.COM

6803 Central Ave, Newark, CA 94560

BCCRE



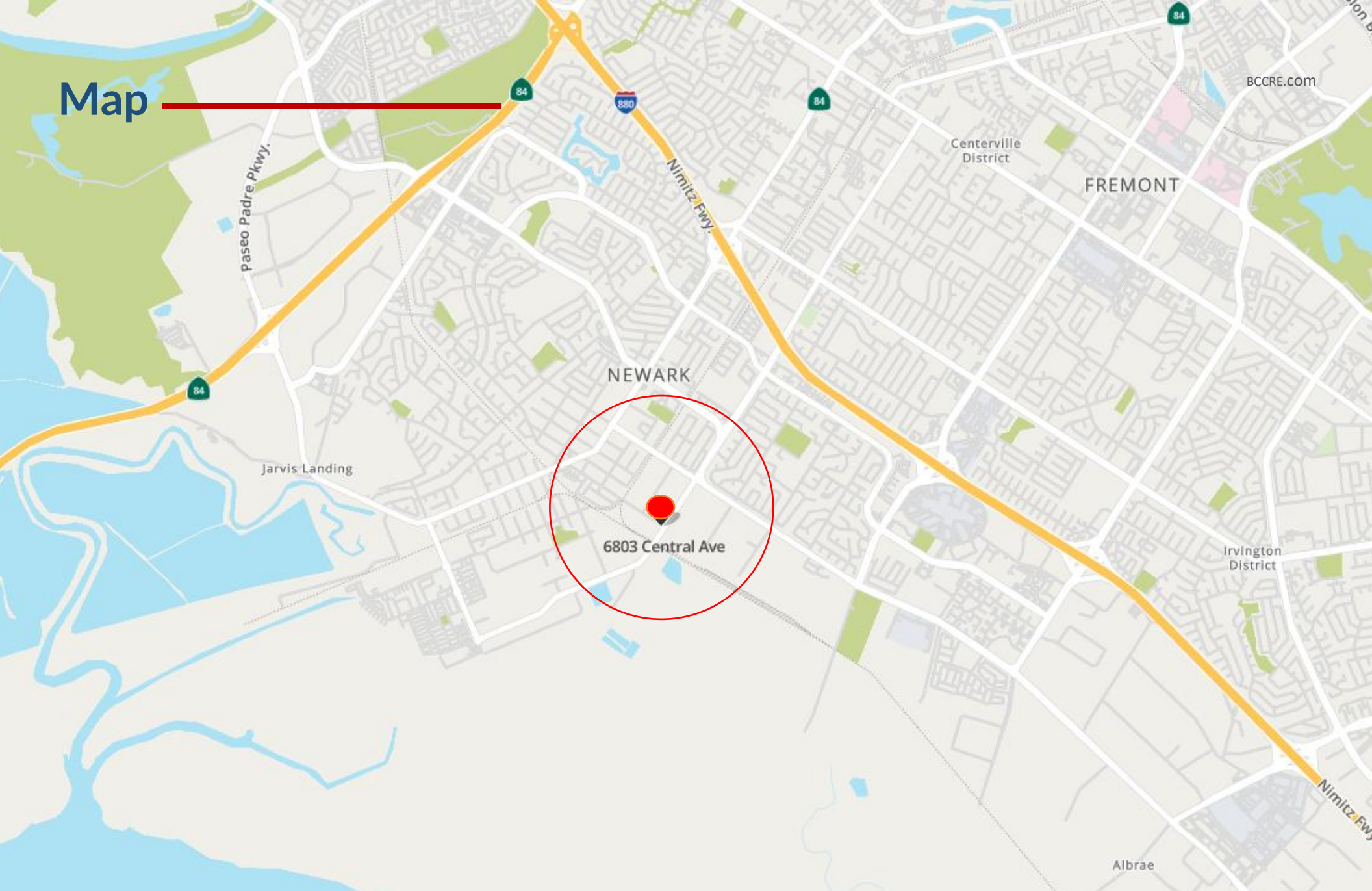


6815 Central Ave Newark, CA ± 3,600 Sq Ft

- 3,600 Sq Ft
- Zoned: General Industrial
- Do not disturb the existing Tenant
 - Call (408) 603-8943 for an appointment
- \$1.75 Gross - No CAM
- 2 GL Doors (Rear & Side of Unit)
- 10' w x 16' h
- 19' Ceiling Height
- A block from Cherry St & a mile from Hwy 880
- Close to the Dumbarton Bridge
- High Traffic on signalized corner of Central Ave

BCCRE makes no guarantees, representations or warranties of any kind, expressed or implied, regarding the information including, but not limited to, warranties of content, accuracy and reliability. Any interested party should undertake their own inquiries as to the accuracy of the information. BCCRE excludes unequivocally all inferred or implied terms, conditions and warranties arising out of this document and excludes all liability for loss and damages arising there from. This publication is the copyrighted property Bishop Clancy Commercial and /or its licensor(s). For BCCRE Marketing purposes only.

Map

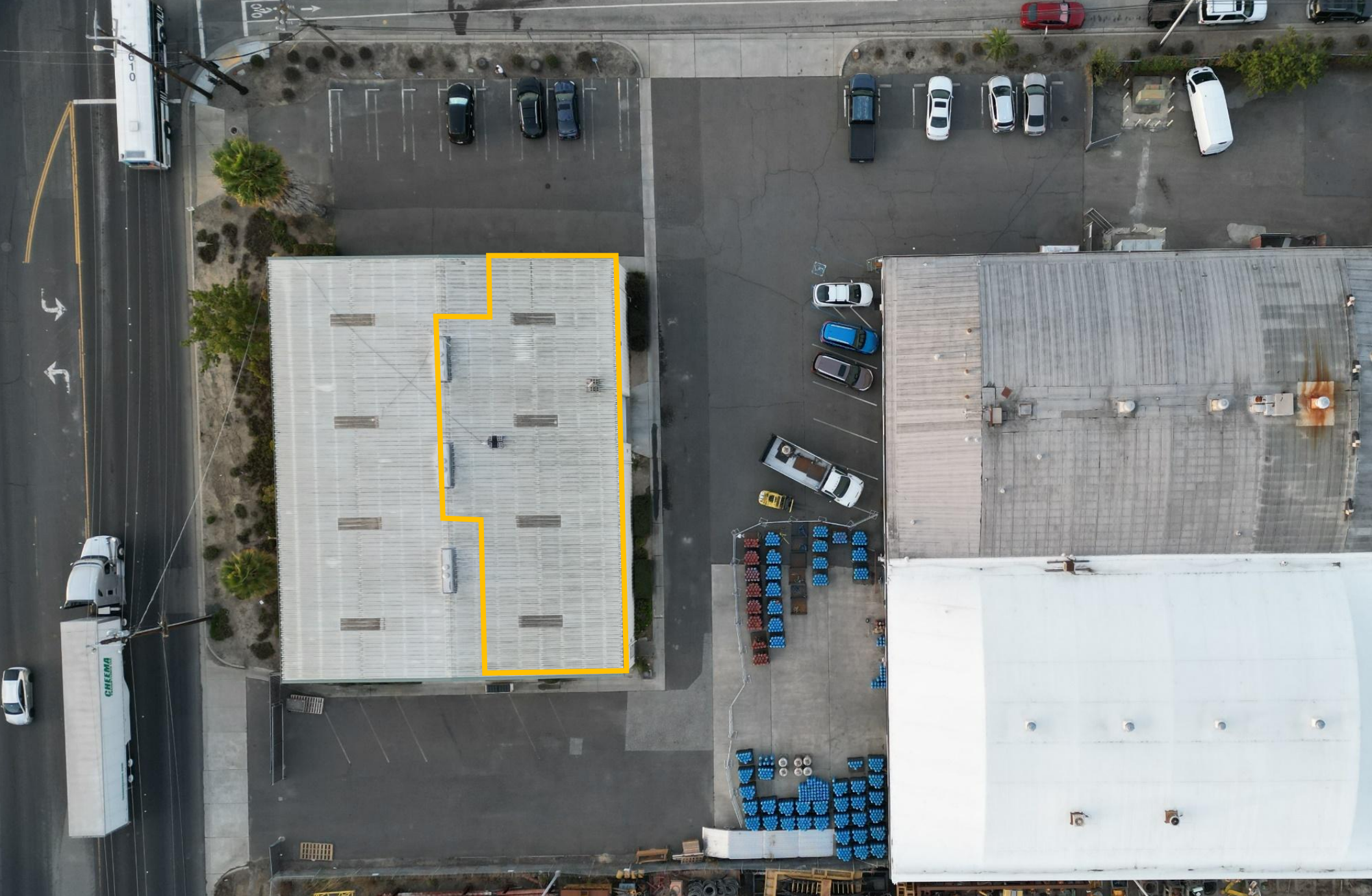


6803 Central Ave, Newark, CA 94560

BCCRE

David Clancy
Dclancy@bccre.com
408.499.8677
CalBRE# 01252697

Jacob Sanchez
Jacob@bccre.com
408.603.8943
CalBRE# 02064109



6803 Central Ave, Newark, CA 94560

BCCRE

David Clancy

Dclancy@bccre.com

408.499.8677

CalBRE# 01252697

Jacob Sanchez

Jacob@bccre.com

408.603.8943

CalBRE# 02064109