

**EAST ORANGE, NJ**

524 CENTRAL AVENUE, EAST ORANGE, NJ 07018



**4,000 SF AVAILABLE**

## OFFERING SUMMARY

Available SF: 4,000 SF

Lease Rate: Call For Details

## NEIGHBORING TENANTS



## PROPERTY OVERVIEW

4,000 SF Former Furniture Store

## PROPERTY HIGHLIGHTS

- Available Immediately
- First Floor: 3,200 SF | Second Floor: 800 SF
- Prime Retail Site
- Located in the Central Business District
- Densely Populated Marketplace
- Heavy Foot Traffic
- Space was Recently Improved
- Convenient Access to Route 280 and the Garden State Parkway

FOR MORE INFORMATION CONTACT:

**NEIL GOLDSTEIN**

201.703.9700 x112

ngoldstein@thegoldsteingroup.com

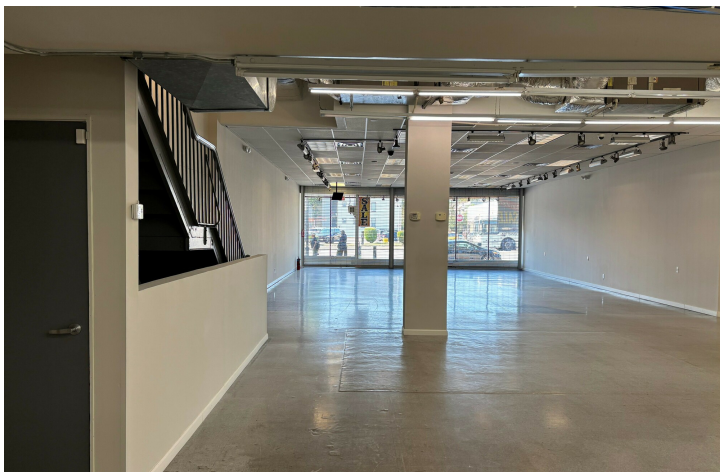
Licensed Real Estate Broker | 123 W MOUNT PLEASANT AVENUE | SUITE 200 | LIVINGSTON, NJ 07039

THEGOLDSTEINGROUP.COM

All information is from sources deemed reliable and is submitted subject to errors, omissions, change of price, terms, rental, prior sale and withdrawal without notice.

**EAST ORANGE, NJ**

524 CENTRAL AVENUE, EAST ORANGE, NJ 07018



FOR MORE INFORMATION CONTACT:

**NEIL GOLDSTEIN**

201.703.9700 x112

ngoldstein@thegoldsteingroup.com

Licensed Real Estate Broker | 123 W MOUNT PLEASANT AVENUE | SUITE 200 | LIVINGSTON, NJ 07039

[THEGOLDSTEINGROUP.COM](http://THEGOLDSTEINGROUP.COM)

All information is from sources deemed reliable and is submitted subject to errors, omissions, change of price, terms, rental, prior sale and withdrawal without notice.

**EAST ORANGE, NJ**

524 CENTRAL AVENUE, EAST ORANGE, NJ 07018



FOR MORE INFORMATION CONTACT:

**NEIL GOLDSTEIN**

201.703.9700 x112

ngoldstein@thegoldsteingroup.com

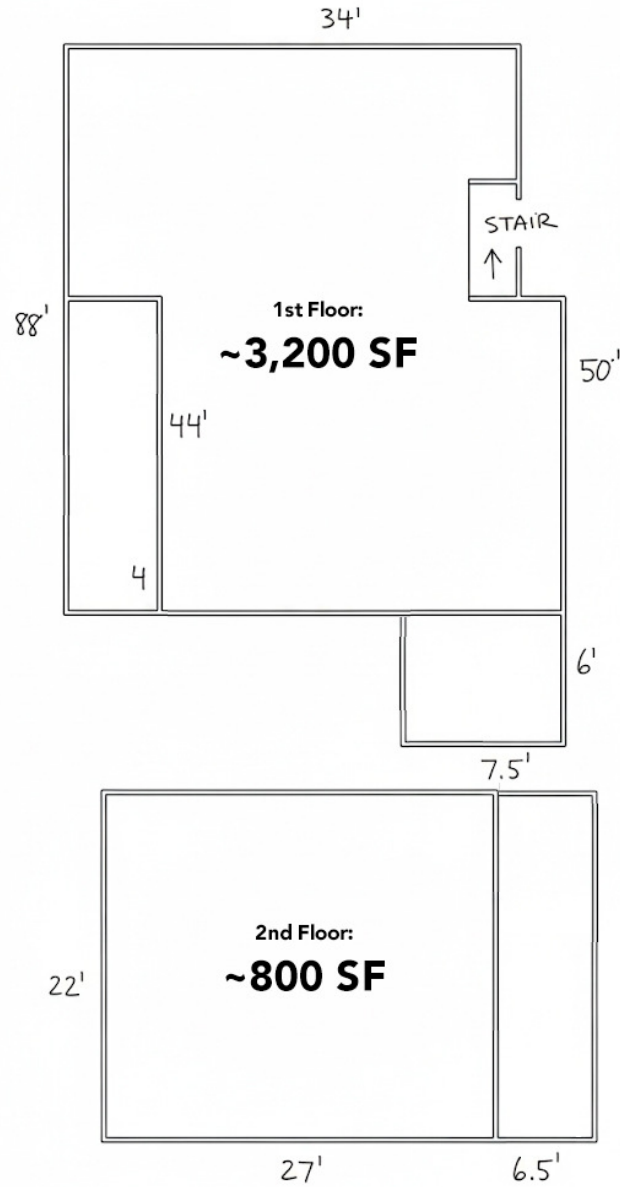
Licensed Real Estate Broker | 123 W MOUNT PLEASANT AVENUE | SUITE 200 | LIVINGSTON, NJ 07039

[THEGOLDSTEINGROUP.COM](http://THEGOLDSTEINGROUP.COM)

All information is from sources deemed reliable and is submitted subject to errors, omissions, change of price, terms, rental, prior sale and withdrawal without notice.

**EAST ORANGE, NJ**

524 CENTRAL AVENUE, EAST ORANGE, NJ 07018



All dimensions are approximate and for illustrative purposes only. Actual dimensions may vary.

FOR MORE INFORMATION CONTACT:

**NEIL GOLDSTEIN**

201.703.9700 x112

ngoldstein@thegoldsteingroup.com

Licensed Real Estate Broker | 123 W MOUNT PLEASANT AVENUE | SUITE 200 | LIVINGSTON, NJ 07039

[THEGOLDSTEINGROUP.COM](http://THEGOLDSTEINGROUP.COM)

All information is from sources deemed reliable and is submitted subject to errors, omissions, change of price, terms, rental, prior sale and withdrawal without notice.

**EAST ORANGE, NJ**

524 CENTRAL AVENUE, EAST ORANGE, NJ 07018



Google

Imagery ©2026 Airbus, Maxar Technologies, Vexcel Imaging US, Inc.

FOR MORE INFORMATION CONTACT:

**NEIL GOLDSTEIN**  
201.703.9700 x112  
ngoldstein@thegoldsteingroup.com

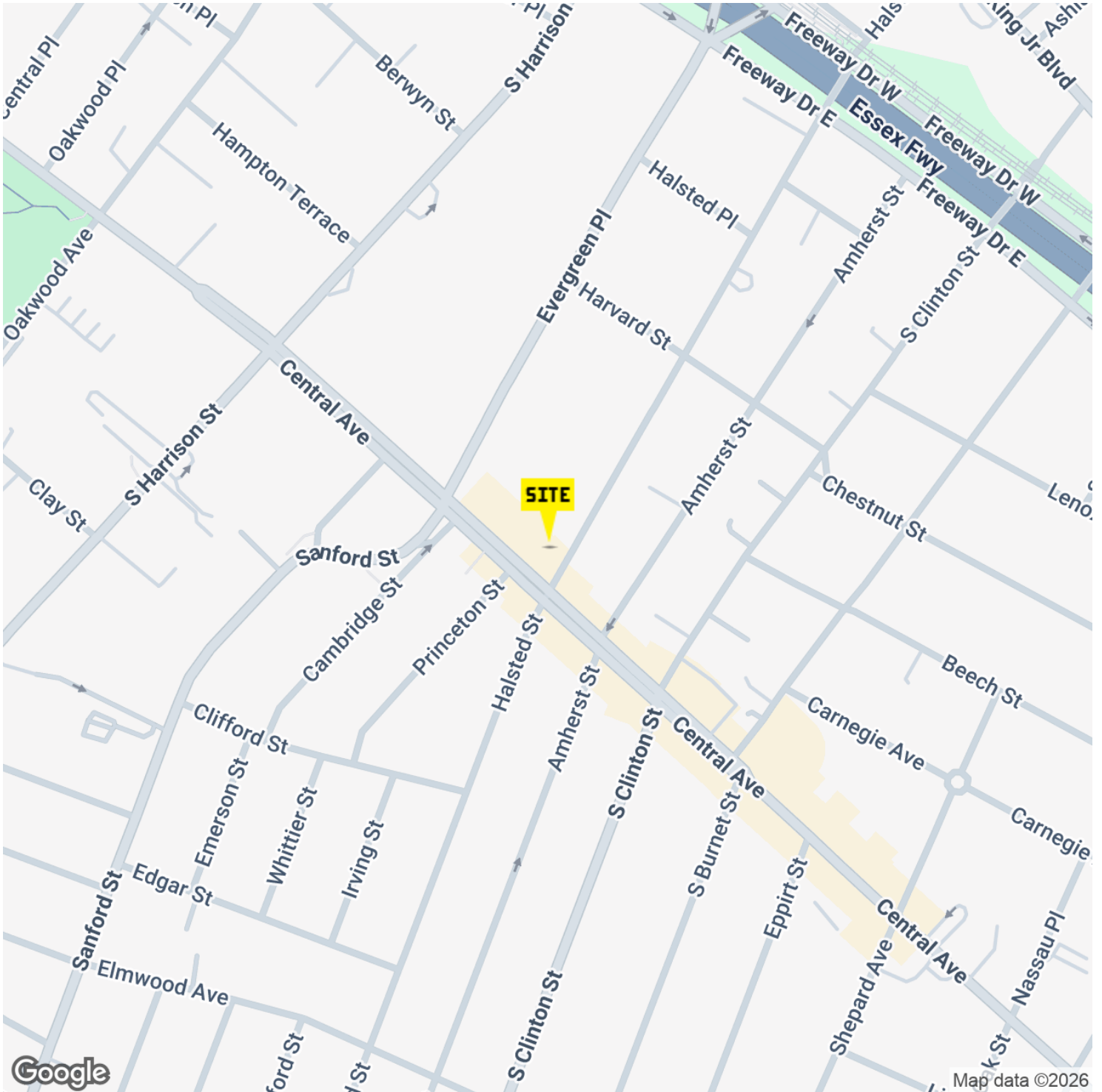
Licensed Real Estate Broker | 123 W MOUNT PLEASANT AVENUE | SUITE 200 | LIVINGSTON, NJ 07039

[THEGOLDSTEINGROUP.COM](http://THEGOLDSTEINGROUP.COM)

All information is from sources deemed reliable and is submitted subject to errors, omissions, change of price, terms, rental, prior sale and withdrawal without notice.

**EAST ORANGE, NJ**

524 CENTRAL AVENUE, EAST ORANGE, NJ 07018



FOR MORE INFORMATION CONTACT:

**NEIL GOLDSTEIN**

201.703.9700 x112  
ngoldstein@thegoldsteingroup.com

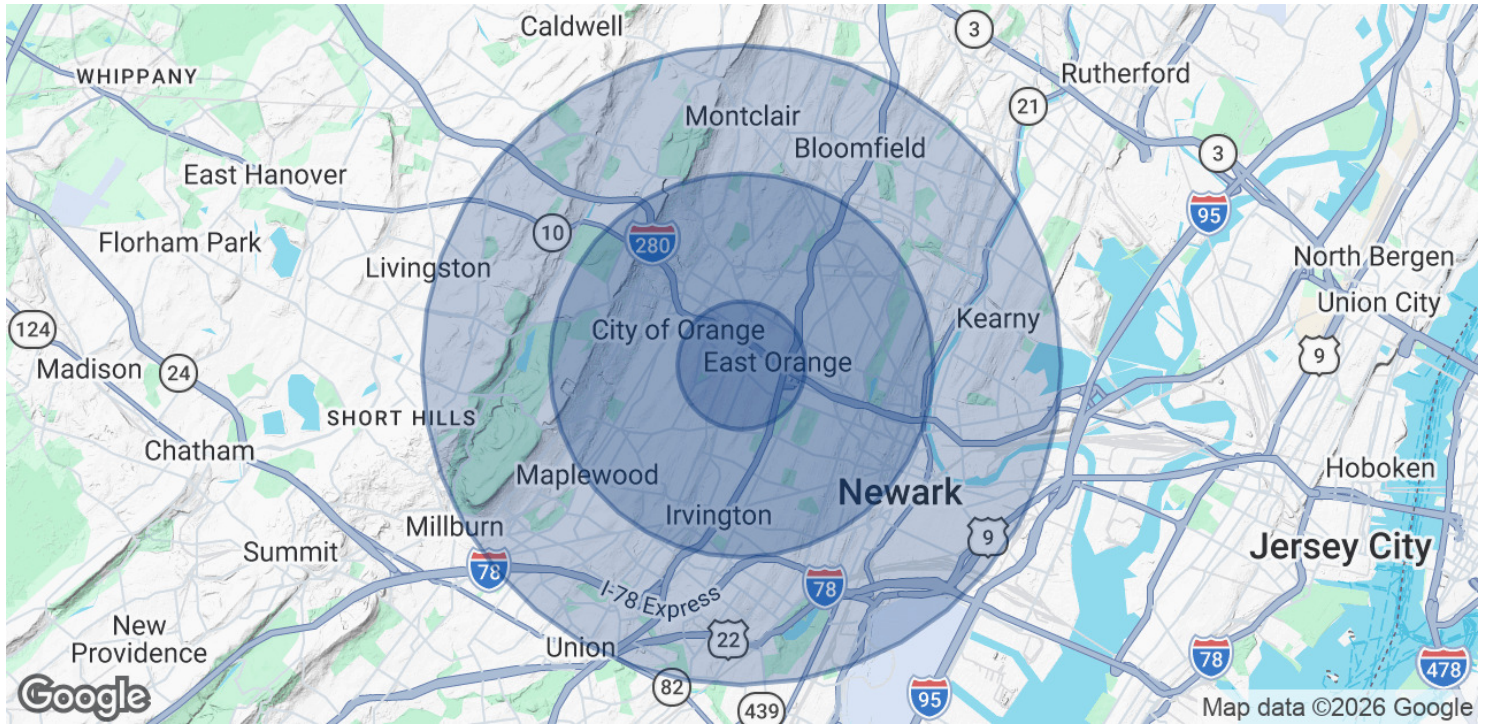
Licensed Real Estate Broker | 123 W MOUNT PLEASANT AVENUE | SUITE 200 | LIVINGSTON, NJ 07039

[THEGOLDSTEINGROUP.COM](http://THEGOLDSTEINGROUP.COM)

All information is from sources deemed reliable and is submitted subject to errors, omissions, change of price, terms, rental, prior sale and withdrawal without notice.

**EAST ORANGE, NJ**

524 CENTRAL AVENUE, EAST ORANGE, NJ 07018



<b>POPULATION</b>	<b>1 MILE</b>	<b>3 MILES</b>	<b>5 MILES</b>
Total Population	58,362	415,681	820,066
Average Age	38	38	39
Average Age (Male)	37	36	37
Average Age (Female)	40	39	40

<b>HOUSEHOLDS &amp; INCOME</b>	<b>1 MILE</b>	<b>3 MILES</b>	<b>5 MILES</b>
Total Households	23,217	151,344	300,134
# of Persons per HH	2.5	2.7	2.7
Average HH Income	\$71,977	\$89,347	\$106,058
Average House Value	\$336,988	\$424,612	\$472,085

Demographics data derived from AlphaMap

FOR MORE INFORMATION CONTACT:

**NEIL GOLDSTEIN**  
 201.703.9700 x112  
 ngoldstein@thegoldsteingroup.com