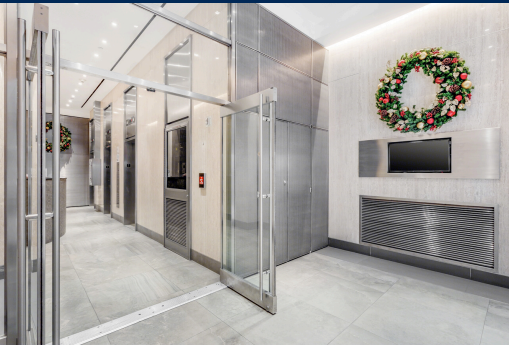


253 WEST 35TH STREET

Base Floors 9,890 SF | Tower Floor 8,546 SF



AVAILABLE SPACE

Entire 5th Floor | 9,890 RSF

Entire 7th Floor | 9,890 RSF

Entire 12th Floor | 8,546 RSF

ASKING RENT

Upon Request

POSSESSION

Immediate

Virtual Tour!



NOTEWORTHY TENANTS INCLUDE:

- Housing Partnership Development Corp
- Custom Collaborative
- Curtis Partition Corp
- A Better Chance
- New York Blood Center
- 34th Street Partnership (BID)

SPACE DESCRIPTION

- One block from the new Moynihan Train Hall
- Renovated attended Lobby with all new elevator cabs and systems
- Floors have North and South light
- 5th, 7th and 12th Floors have 23 Thermopane Picture operable windows
- Creative space with exposed ceilings and exposed steel columns
- Glass front offices and concrete floors on the 5th floor
- The 7th and 12th Floors have wood floors and the LL to build a new standard installation.
- Direct to Con Edison / Tenant controlled A/C
- New bathrooms and pantry
- Stable ownership - established 1898
- 2 Blocks from Penn Station / Near all subways and transportation
- Time Warner cable/high speed fiber optics, Above Net Ultra High Speed (Fiber), Pilot (Fiber), Broadview Networks (Fiber), Broadview networks (infohighway), T-1 Lines

For more information, please contact:

ALAN BONETT

917.326.5533

abonett@adamsre.com

BRAD COHN

917.326.5537

bcohn@adamsre.com

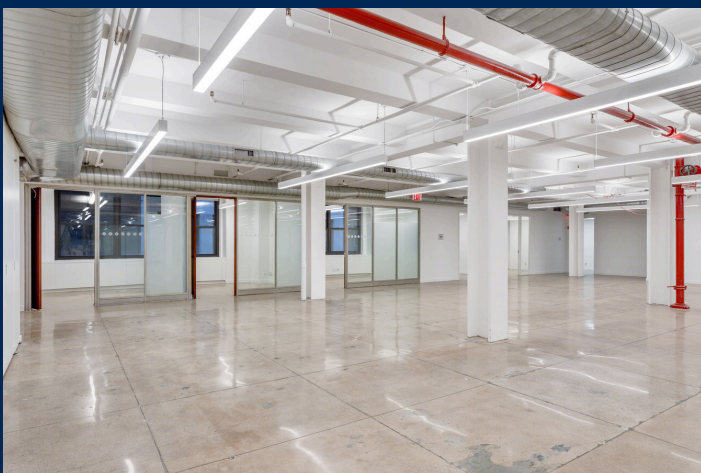


All information furnished is from sources deemed reliable. No warranty or representation is made as to the accuracy thereof and same is submitted subject to errors, omissions of price, rental, or other conditions, prior to sale, lease or financing or withdrawal without notice.

www.adamsre.com

253 WEST 35TH STREET Entire 5th Floor

Virtual Tour!



For more information, please contact:

ALAN BONETT

917.326.5533

abonett@adamsre.com

BRAD COHN

917.326.5537

bcohn@adamsre.com



All information furnished is from sources deemed reliable. No warranty or representation is made as to the accuracy thereof and same is submitted subject to errors, omissions of price, rental, or other conditions, prior to sale, lease or financing or withdrawal without notice.

www.adamsre.com

253 WEST 35TH STREET Entire 5th Floor

9,890 SF - Will Divide



For more information, please contact:

ALAN BONETT

917.326.5533

abonett@adamsre.com

BRAD COHN

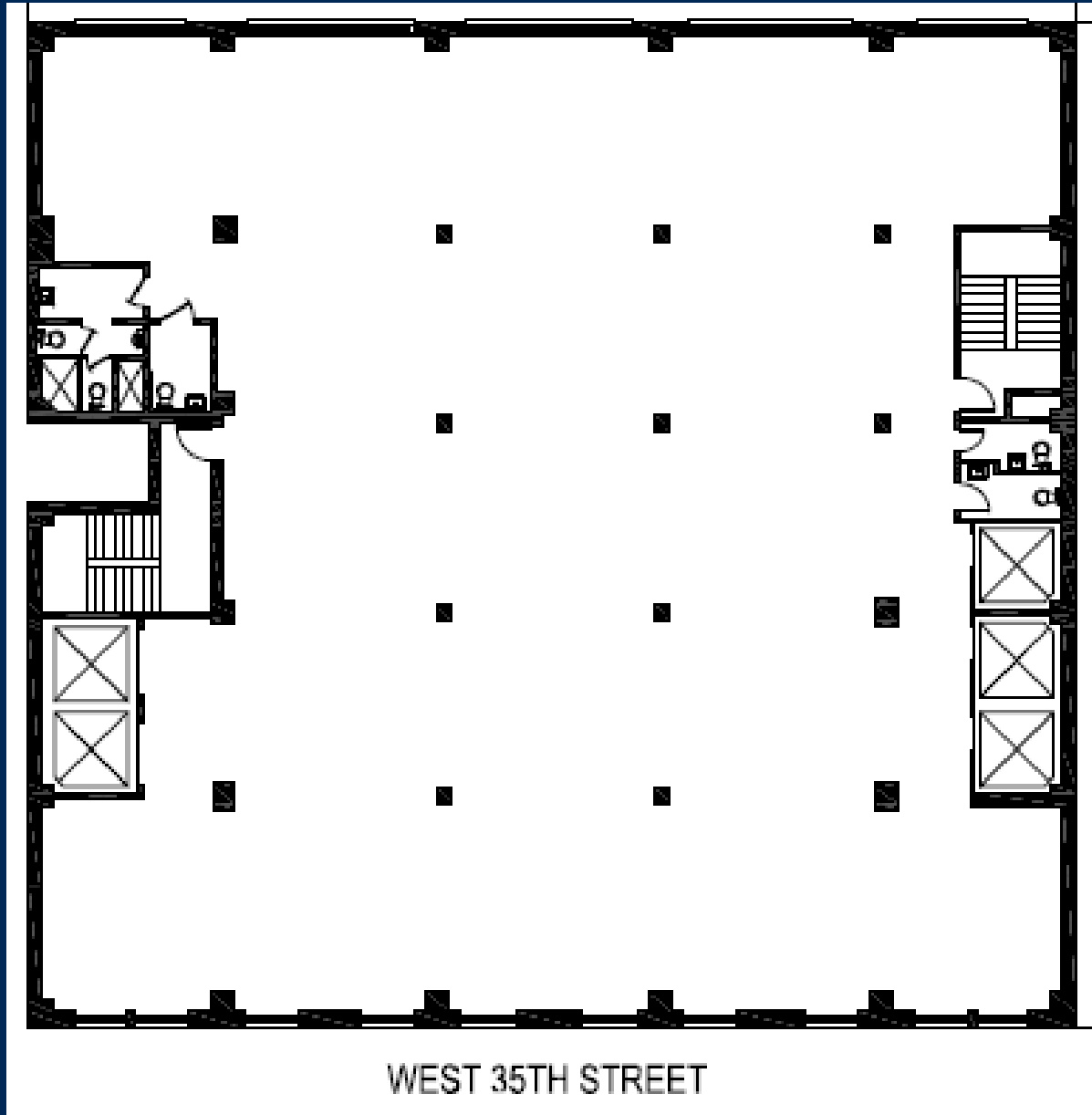
917.326.5537

bcohn@adamsre.com



All information furnished is from sources deemed reliable. No warranty or representation is made as to the accuracy thereof and same is submitted subject to errors, omissions of price, rental, or other conditions, prior to sale, lease or financing or withdrawal without notice.

253 WEST 35TH STREET Entire 7th Floor



For more information, please contact:

ALAN BONETT

917.326.5533

abonett@adamsre.com

BRAD COHN

917.326.5537

bcohn@adamsre.com

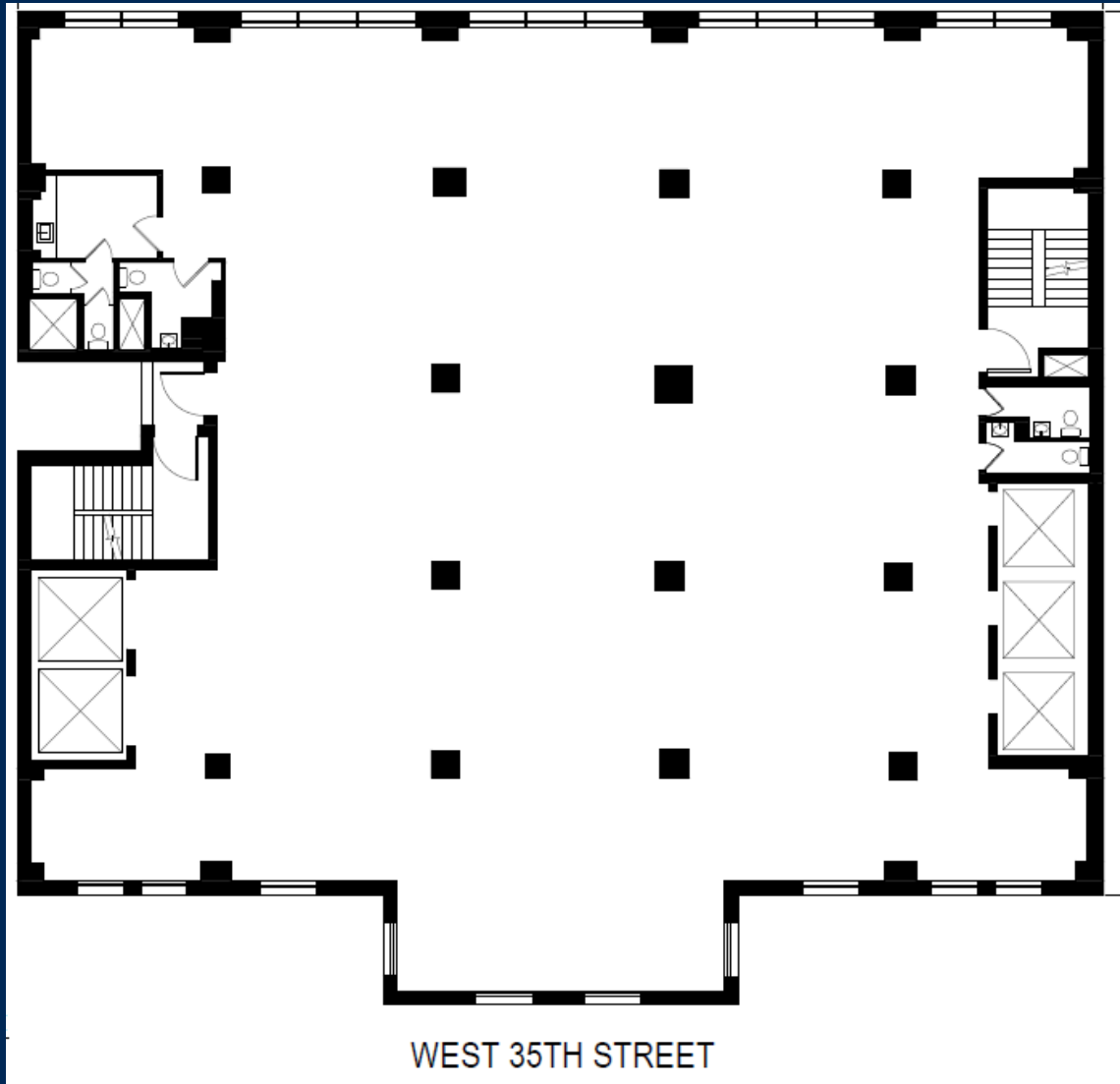


All information furnished is from sources deemed reliable. No warranty or representation is made as to the accuracy thereof and same is submitted subject to errors, omissions of price, rental, or other conditions, prior to sale, lease or financing or withdrawal without notice.

www.adamsre.com

253 WEST 35TH STREET Entire 12th Floor

8,546 SF



For more information, please contact:

ALAN BONETT

917.326.5533

abonett@adamsre.com

BRAD COHN

917.326.5537

bcohn@adamsre.com



All information furnished is from sources deemed reliable. No warranty or representation is made as to the accuracy thereof and same is submitted subject to errors, omissions of price, rental, or other conditions, prior to sale, lease or financing or withdrawal without notice.

www.adamsre.com