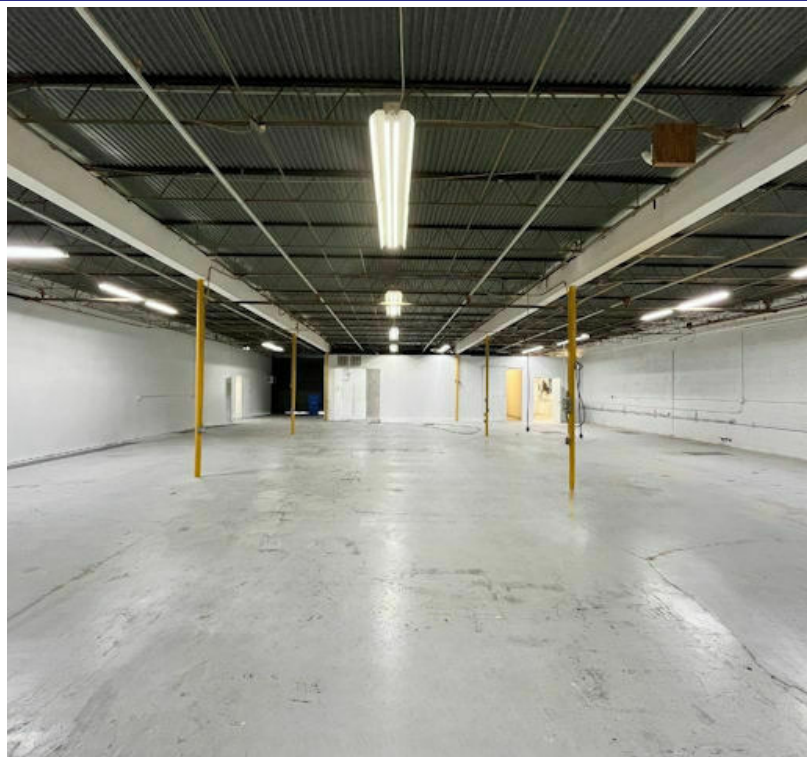


# TAYLOR CREEK

511-545 NE 32ND STREET, OAKLAND PARK, FL 33334

3200B NE 32ND STREET



## SPACE HIGHLIGHTS

- 6,134 SF
- 1,434 SF air-conditioned offices
- Newly renovated
- Fully sprinklered bay
- Permitted furniture spray booth
- Heavy 3 phase electric
- LED Lighting
- 18' x 10' front grade level overhead door
- 10' x 10' rear grade level overhead door
- Shower facilities
- 11' clear ceiling in warehouse



### ANGIE WEAVER

Lauderdale Lakes and Lauderhill Manager  
Direct: 954.485.9200 | Cell: 917.645.2339  
angie@levyrai.com

### HALEY PRESSER

Property Manager / Sales Associate  
Direct: 954.485.9200 | Cell: 954.254.5396  
Haley@levyrai.com

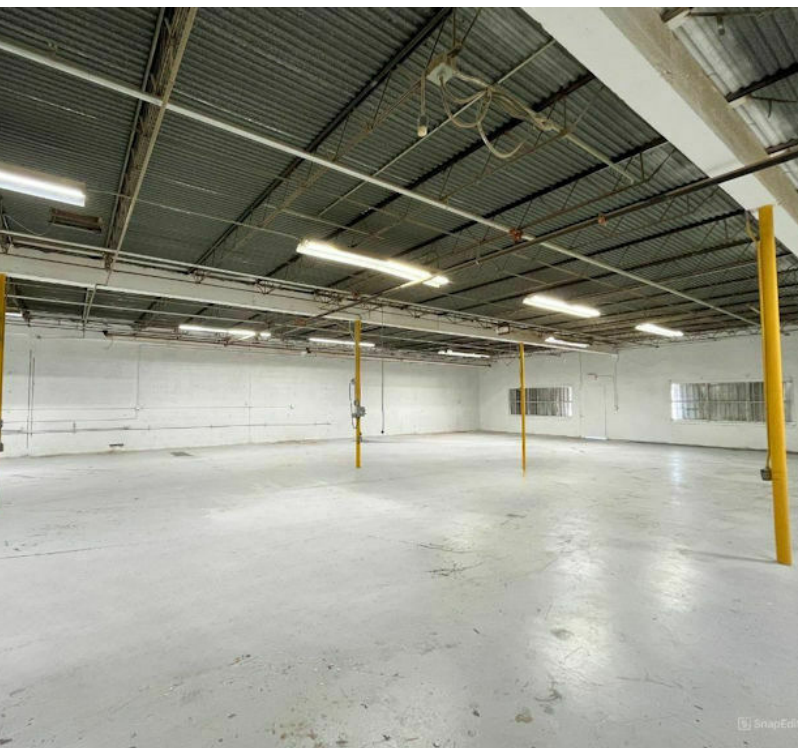
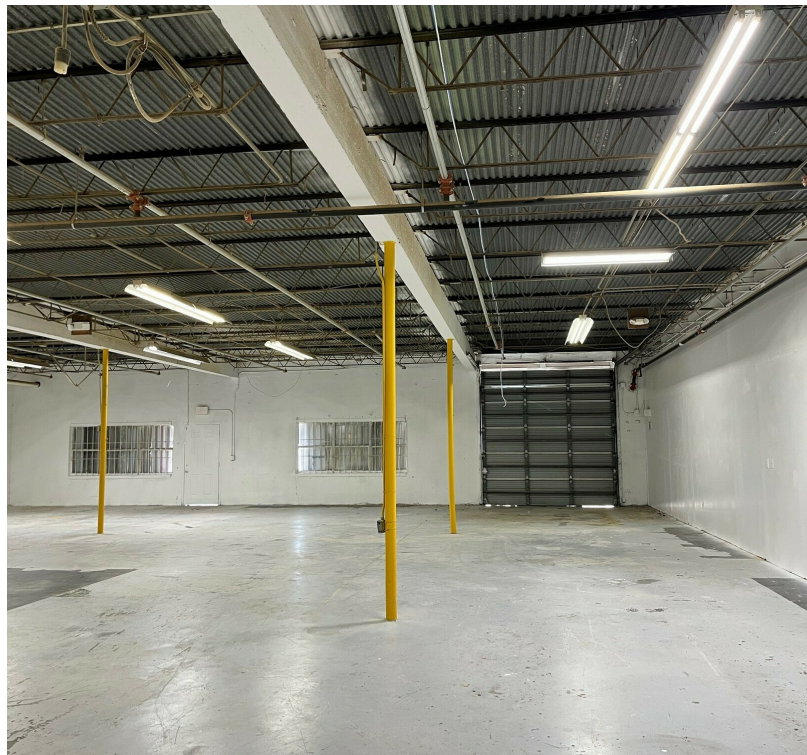


FOR LEASE

# TAYLOR CREEK

511-545 NE 32ND STREET, OAKLAND PARK, FL 33334

## 3200B NE 32ND STREET ADDITIONAL PHOTOS



### ANGIE WEAVER

Lauderdale Lakes and Lauderdale Manager  
Direct: 954.485.9200 | Cell: 917.645.2339  
angie@levyrai.com

### HALEY PRESSER

Property Manager / Sales Associate  
Direct: 954.485.9200 | Cell: 954.254.5396  
Haley@levyrai.com

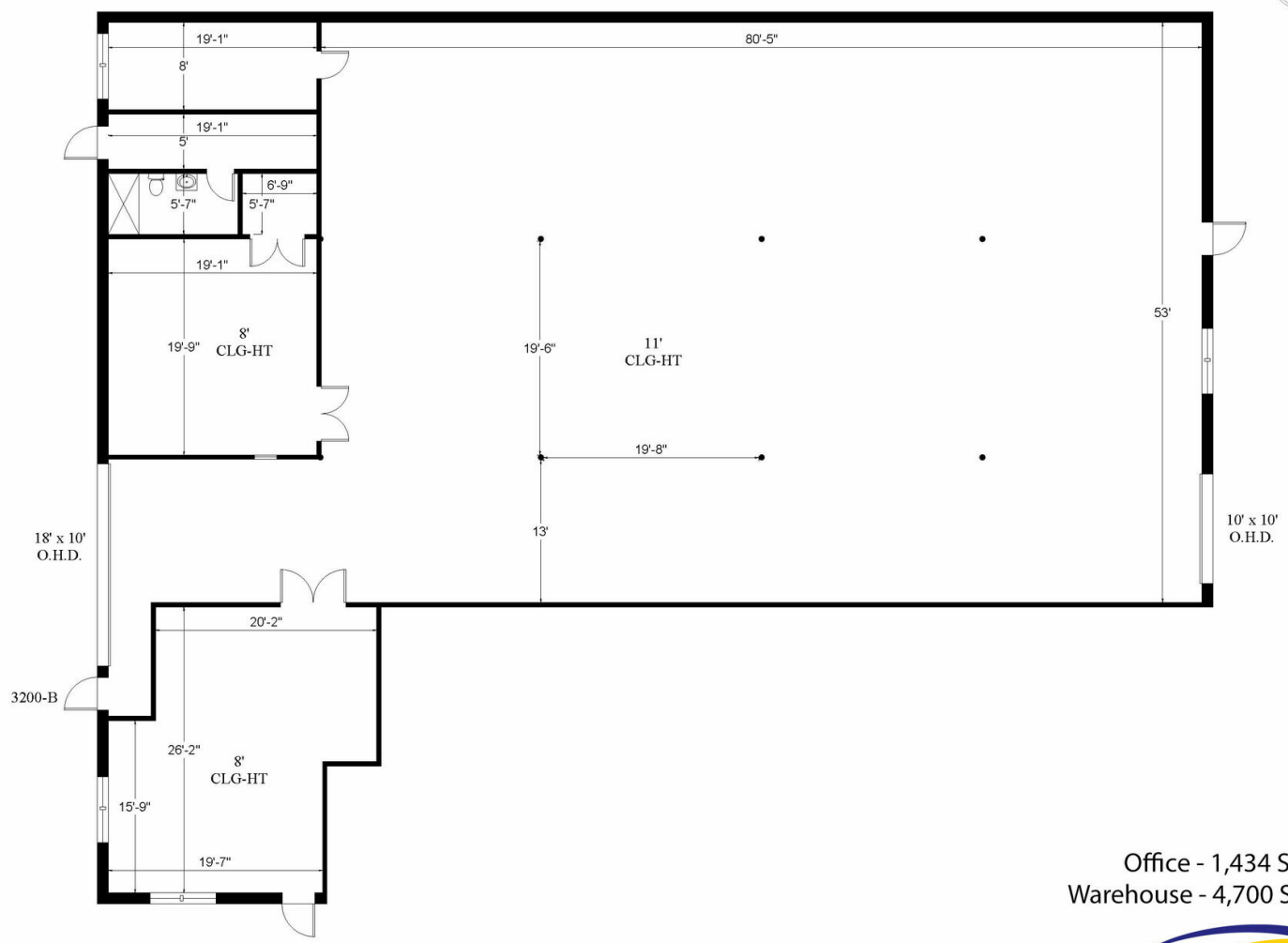


# TAYLOR CREEK

511-545 NE 32ND STREET, OAKLAND PARK, FL 33334

## TAYLOR CREEK

3200-B NE 32nd Street | Oakland Park, FL 33334



Office - 1,434 Sq. Ft.  
Warehouse - 4,700 Sq. Ft.

6,134 Rentable Sq. Ft.  
[www.LevyRealtyAdvisors.com](http://www.LevyRealtyAdvisors.com)

### ANGIE WEAVER

Lauderdale Lakes and Lauderhill Manager  
Direct: 954.485.9200 | Cell: 917.645.2339  
angie@levyrai.com

### HALEY PRESSER

Property Manager / Sales Associate  
Direct: 954.485.9200 | Cell: 954.254.5396  
Haley@levyrai.com

