



148 Ninth Avenue, Retail

(Corner of Ninth Avenue & West 19th Street)

As Exclusive Agents, We Are
Pleased To Offer The Following:

Restaurant Space For Lease

 **DouglasElliman**
Commercial

575 MADISON AVENUE, NEWYORK, NEW YORK 10022

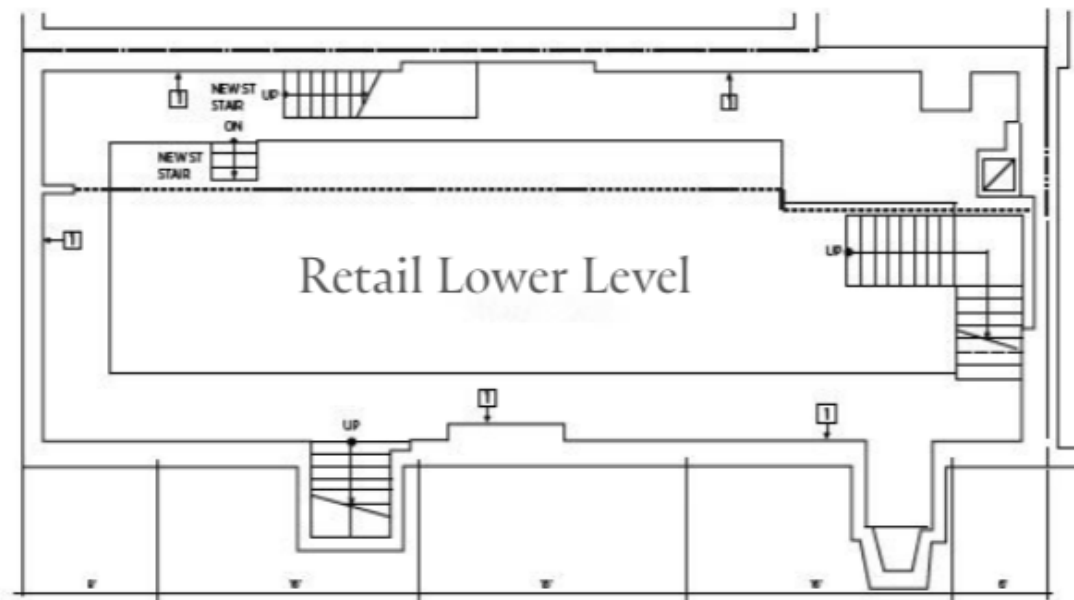
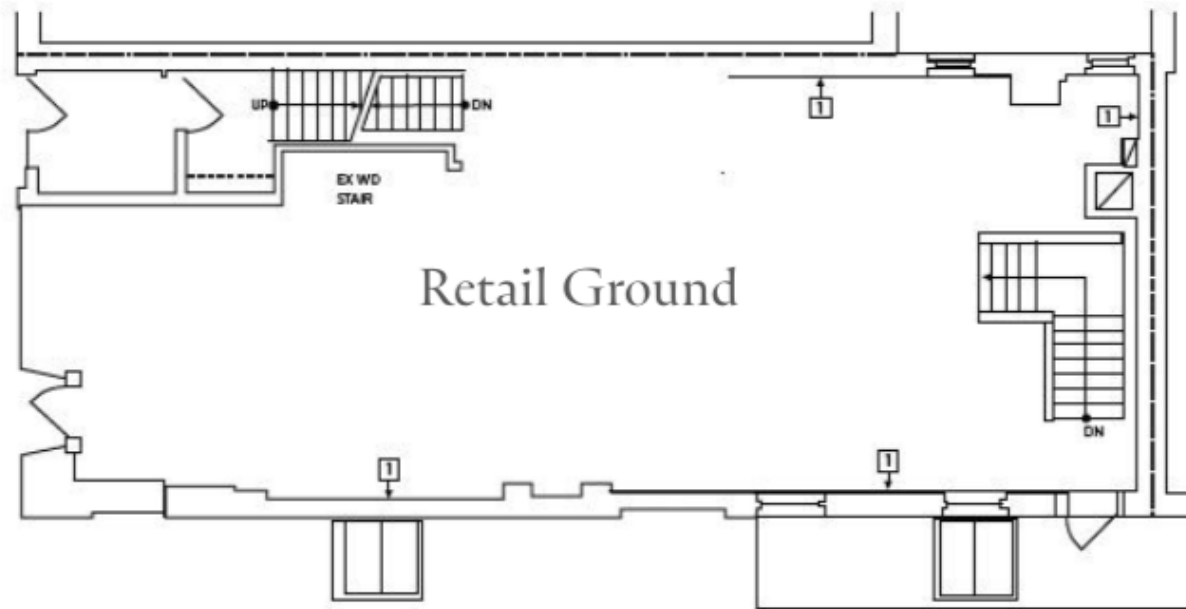
148 Ninth Avenue, Retail

148 Ninth Avenue offers a restaurant ready corner space for lease. Located in prime Chelsea neighborhood adjacent to the Highline/West Chelsea Meatpacking District submarkets.

Location	Northeast Corner of Ninth Avenue and West 19 th Street
Space	Ground Level - 1,500 RSF Lower Level - 1,400 RSF
Frontage	80 feet Corner Wrap
Rental	Upon Request
Possession	Immediate
Landmark	No
Features	New Restaurant Infrastructure Installed Black Iron and Kitchen Hood Split Systems and Tonnage Generous Southwest Natural Light Outdoor Café Seating Potential Updated Utilities – Gas, Electric, Water/Sewer Sidewalk Access to Lower Level for Efficient Load-In/Load-Out



148 Ninth Avenue, Retail



148 Ninth Avenue, Retail

NEIGHBORHOOD HIGHLIGHTS ATTRACTING MILLIONS OF LOCALS AND TOURISTS



Hudson River Park / Little Island



Chelsea Highline



Chelsea Market



Meatpacking District



For further information and inspection, please contact:

Louis Puopolo
Licensed Associate Real Estate Broker
917 374-0099
louis.puopolo@elliman.com

 **Douglas Elliman**
Commercial

© 2025 DOUGLAS ELLIMAN COMMERCIAL, LLC. ALL RIGHTS RESERVED. THE INFORMATION CONTAINED IN THIS DOCUMENT IS PROPRIETARY TO DOUGLAS ELLIMAN COMMERCIAL, LLC AND SHALL BE USED SOLELY FOR THE PURPOSES OF EVALUATING THIS PROPOSAL. ALL SUCH DOCUMENTATION AND INFORMATION REMAINS THE PROPERTY OF DOUGLAS ELLIMAN COMMERCIAL, LLC AND SHALL BE KEPT CONFIDENTIAL. REPRODUCTION OF ANY PART OF THIS DOCUMENT IS AUTHORIZED ONLY TO THE EXTENT NECESSARY FOR ITS EVALUATION. IT IS NOT TO BE SHOWN TO ANY THIRD PARTY WITHOUT THE PRIOR WRITTEN AUTHORIZATION OF DOUGLAS ELLIMAN COMMERCIAL, LLC. ALL INFORMATION CONTAINED HEREIN IS FROM SOURCES DEEMED RELIABLE; HOWEVER, NO REPRESENTATION OR WARRANTY IS MADE AS TO THE ACCURACY THEREOF.