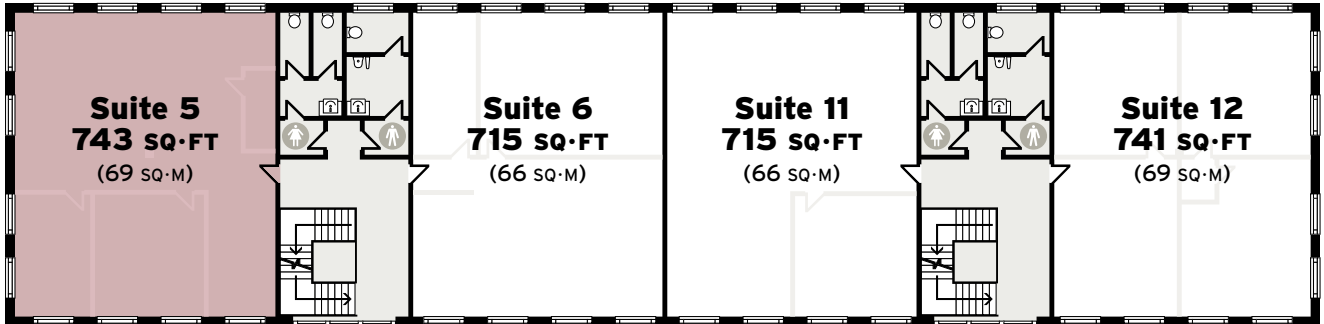


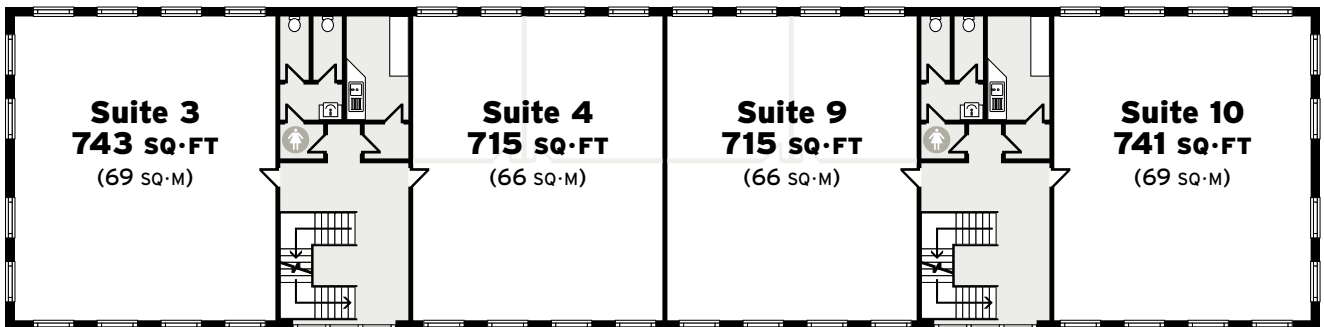
# OFFICE SUITES

AFFORDABLE | ACCESSIBLE

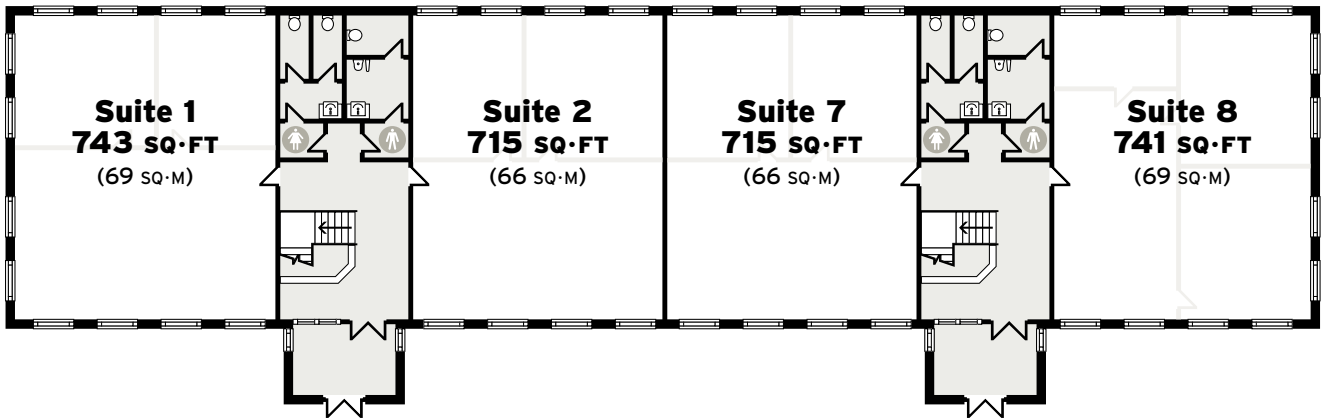
## SECOND FLOOR



## FIRST FLOOR



## GROUND FLOOR



Wilmslow House is an ideal property for growing businesses looking to thrive in a lively town centre.

- On-site parking
- All-inclusive packages
- 24-hour access
- Heating
- Kitchen facilities
- Intercom access
- High speed internet connection

## AVAILABILITY

Space	Size
2nd Floor - Suite 5	743 (sq.ft.)

## SUPERFAST BROADBAND AVAILABLE:



# WILMSLOW HOUSE

