

8737 COLESVILLE ROAD SILVER SPRING, MD 20910

OFFICE / MEDICAL
821 RSF - 10,065 RSF (Full Floor)

SPEC SUITES
1,969 RSF
5,354 RSF

- New shared conference facility
- Building signage available
- Reserved onsite covered parking available
- Onsite banking and café
- Flexible lease term, 3-10 years



Superb location ♦ Walk to all the best Downtown Silver Spring amenities ♦ Excellent access to I-495 via Route 29 (Colesville Rd.) and Route 97 (Georgia Ave.) ♦ Upgraded common areas ♦ Newly renovated restrooms ♦ Elegant lobby



*For more information or to
schedule a tour:*

301.961.9696

Zach Dubin

Ext. 213

zdubin@amrcommercial.com

Sam Farnum

Ext. 216

sfarnum@amrcommercial.com

Bill Montrose

Ext. 203

wmontrose@amrcommercial.com

Although all information furnished is from sources we deem reliable, such information has not been verified and no express representation is made nor is any to be implied as to the accuracy thereof, and it is submitted subject to errors, omissions, or other conditions.



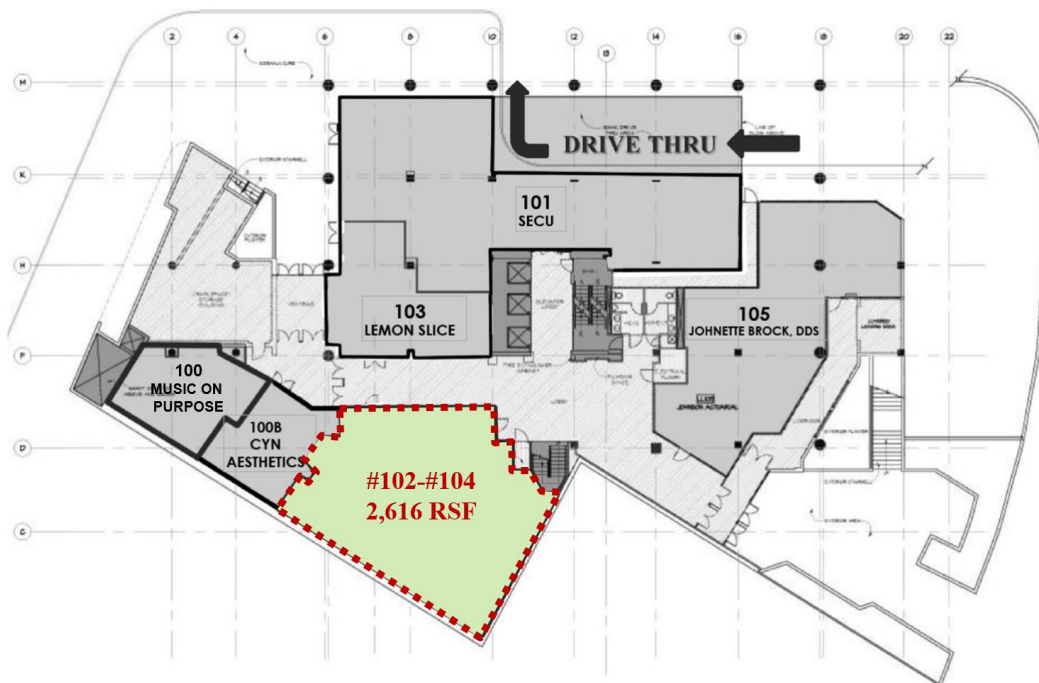
ALEXANDER, MONTROSE, RITTENBERG
Commercial Real Estate Brokerage
Est. 1994

Celebrating
31
Years
1994-2025



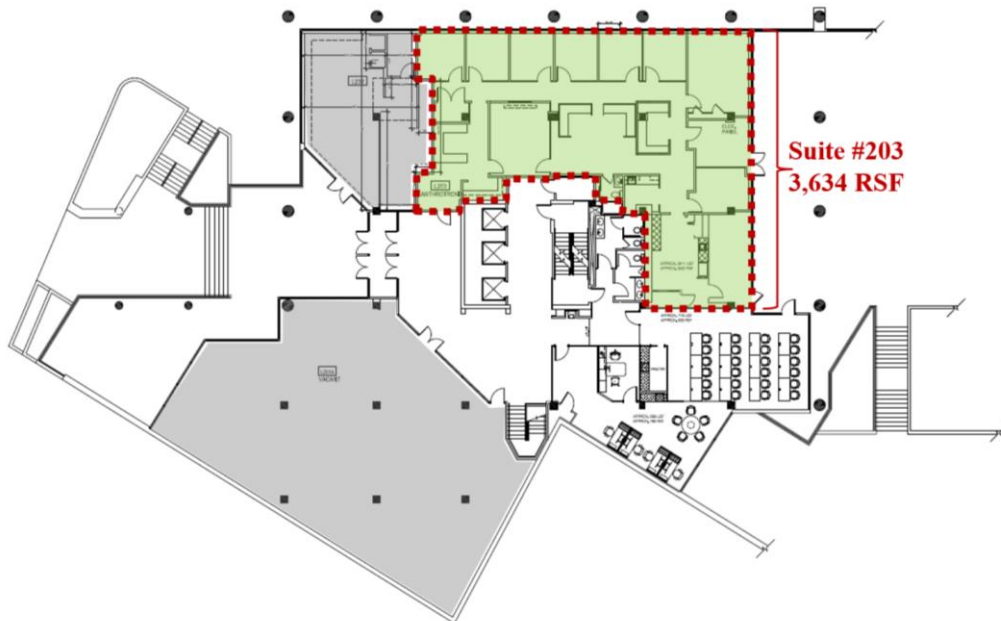
1ST FLOOR / LOWER LOBBY LEVEL

2,616 RSF



2ND FLOOR / UPPER LOBBY LEVEL

3,634 RSF

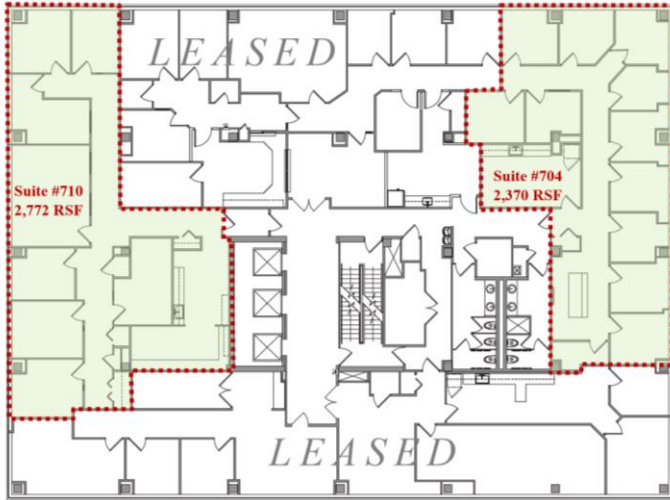


Not to Scale / Measurements Approximate

Although all information furnished is from sources we deem reliable, such information has not been verified and no express representation is made nor is any to be implied as to the accuracy thereof, and it is submitted subject to errors, omissions, or other conditions.

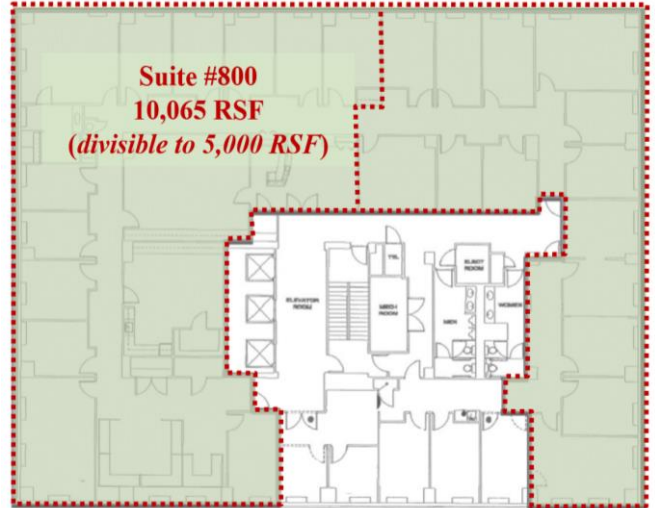
7TH FLOOR

2,370 RSF OR 2,772 RSF



8TH FLOOR

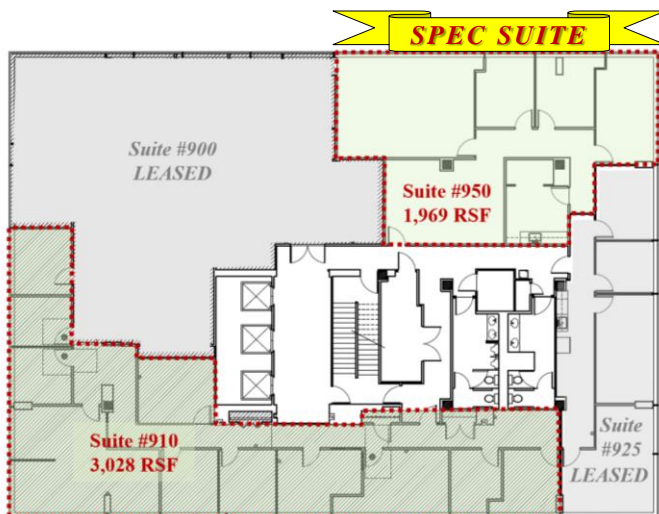
**10,065 RSF
(divisible to 5,000 RSF)**



9TH FLOOR

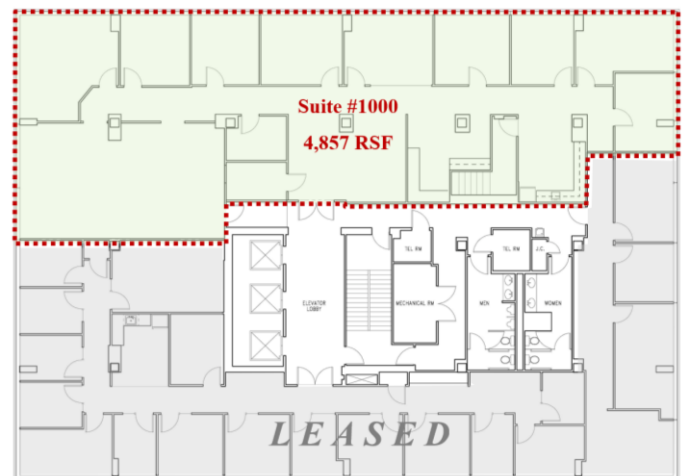
1,969* OR 3,028 RSF

**Spec Suite*



10TH FLOOR

4,857 RSF



Not to Scale / Measurements Approximate

Although all information furnished is from sources we deem reliable, such information has not been verified and no express representation is made nor is any to be implied as to the accuracy thereof, and it is submitted subject to errors, omissions, or other conditions.