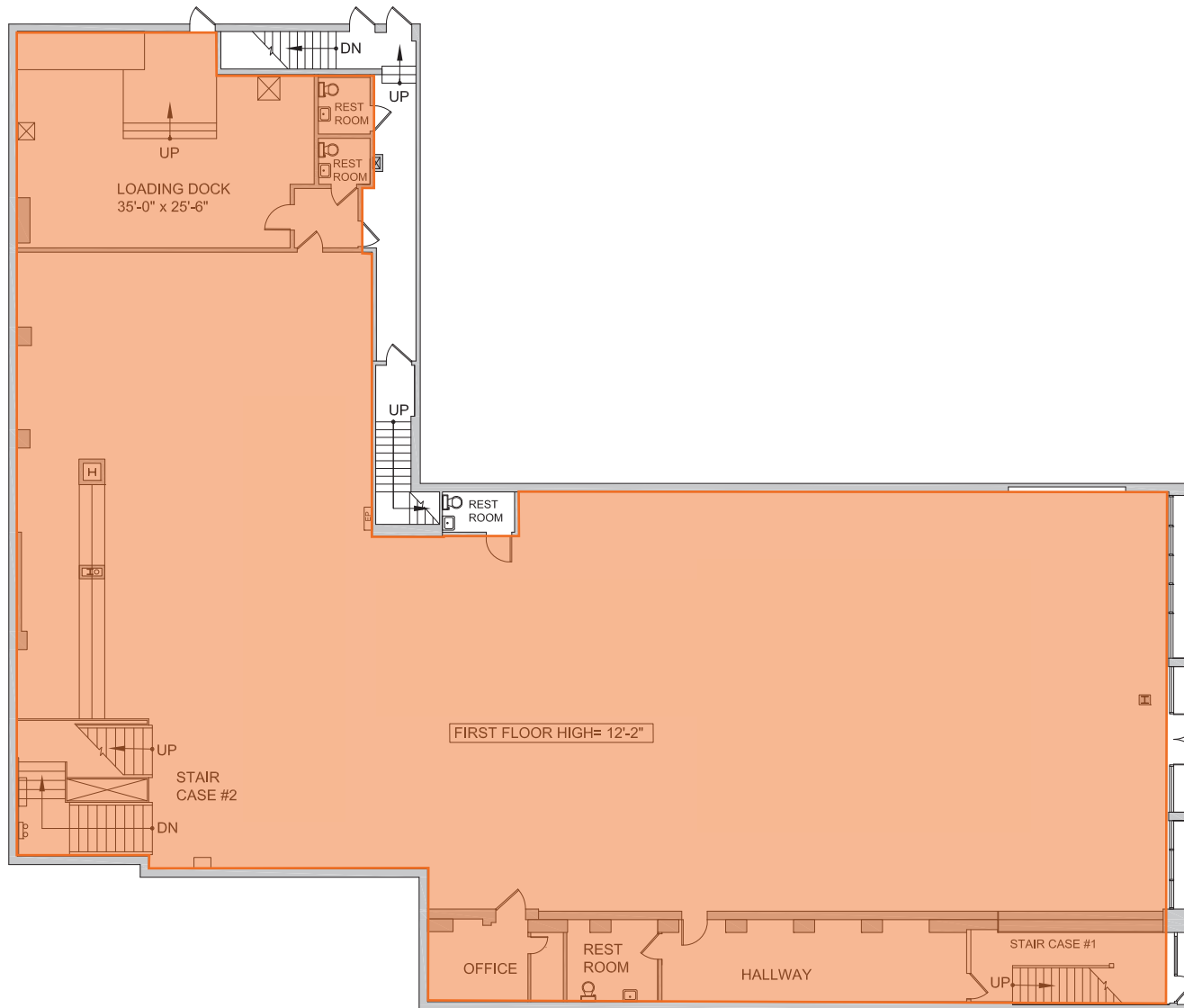


31-08 STEINWAY STREET

BETWEEN 31ST AVENUE & BROADWAY | ASTORIA, QUEENS

FLOOR PLANS:
GROUND FLOOR - 10,393 SF



All information supplied in this marketing presentation and/or flyer is from sources deemed reliable and is furnished subject to errors, omissions, modifications, removal of listings from sale/lease and to any listing condition. Any square footage, dimensions, floor plans and/or technical data set forth are approximations and are subject to further elaboration/confirmation.

31-08 STEINWAY STREET

BETWEEN 31ST AVENUE & BROADWAY | ASTORIA, QUEENS

FLOOR PLANS:
BASEMENT - 5,638 SF

