

ICONIC HOLLYWOOD VENUE



1623 1/2 N Cahuenga Blvd,
Los Angeles, CA





OVERVIEW & HIGHLIGHTS

An iconic and newly renovated 4,325 SF venue in the heart of Hollywood, this legendary space comes with a coveted Type 48 liquor license and live entertainment permissions—ideal for nightlife, music, or performance-driven concepts. Long celebrated as a launchpad for acclaimed singer-songwriters, the venue offers turnkey infrastructure, a rich cultural legacy, and prime positioning along the vibrant Cahuenga Corridor with strong foot traffic and visibility.



SIZE: 4,325 SF+ 750 PATIO



10 YEAR + 2 FIVE YEAR



BASE RENT: \$16,950



NEWLY RENOVATED



NNN \$2,800



ASKING PRICE: INQUIRE WITH BROKER



3% ANNUAL INCREASE



FOR ALL FFE AND TYPE 48 LICENSE, PLEASE INQUIRE WITH BROKER.





NEIGHBORHOOD



owen

GMR

THE SPOTLIGHT

stout
burgers&beers

DESERT
D.5.
SPOT

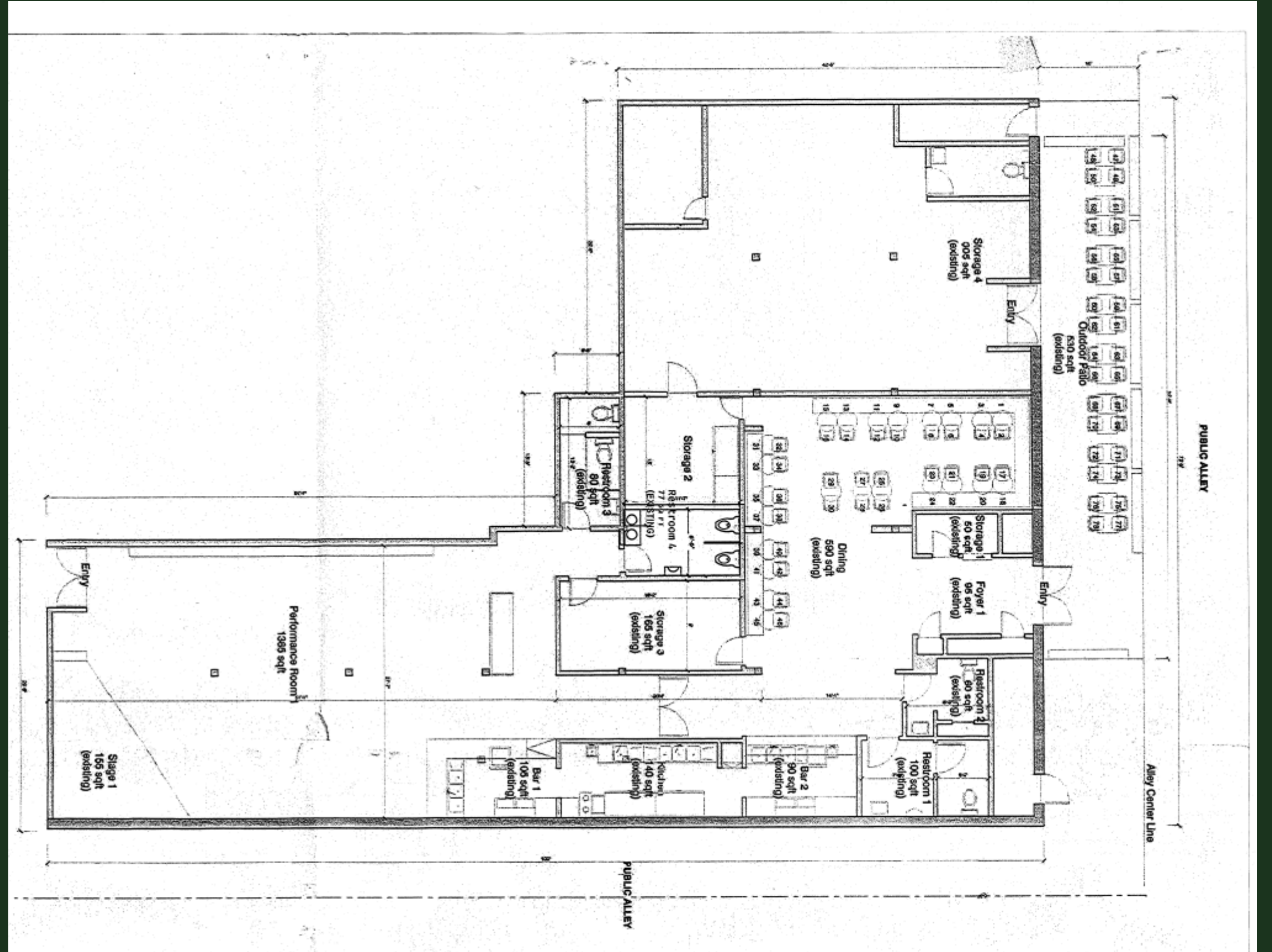


superba

Barlis

FLOOR PLAN

SIZE: 4,325 SF



CONTACT



LORENA TOMB

213.277.7247 X 1

LORENA@URBANLIMERE.COM

BRE# 01894475

