



## 111 Wardour Street, London, W1F 0UH

Fully refurbished and fitted offices in the heart of Soho

- Newly refurbished 4th & 5th floors - contemporary finishes
- Air-conditioned throughout with new LED lighting
- Lift-served building with modern specifications
- Prime Soho location among creative and media occupiers
- Fully fitted with two 8-person meeting rooms and 16 workstations
- Brand new kitchen on the 4th floor
- Fibre connectivity

## Summary

<b>Available Size</b>	1,305 to 5,828 sq ft
<b>Rent</b>	£79.50 per sq ft
<b>Rates Payable</b>	£25 per sq ft
<b>Service Charge</b>	£13.41 per sq ft
<b>VAT</b>	Applicable
<b>Estate Charge</b>	N/A
<b>EPC Rating</b>	Upon enquiry

## Description

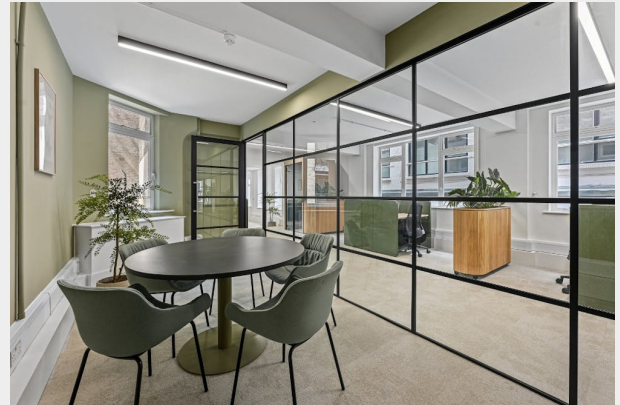
111 Wardour Street offers newly refurbished, high-quality office space on its 4th and 5th floors, ideal for dynamic teams of 5–10 staff. Together, the floors provide approximately 1,554 Sq ft of fully fitted workspace with two 8-person meeting rooms, 16 workstations, and a brand new kitchen on the 4th floor. Air conditioning, new LED lighting, refurbished WCs, and lift access ensure modern comfort and convenience for occupiers seeking a turnkey solution in one of London's most creative neighbourhoods.

## Location

Perfectly positioned in the heart of Soho on the west side of Wardour Street, this address places your business at the centre of London's vibrant cultural and commercial scene. With Piccadilly Circus, Tottenham Court Road, and Oxford Circus stations all within a short walk, staff and clients benefit from excellent connectivity via Bakerloo, Central, Northern, Piccadilly, and Victoria lines. The area is a bustling hub for media, production, film and creative industries, with countless restaurants, cafés, and amenities on the doorstep.

## Accommodation

Name	sq ft	Availability
Suite - 4th & 5th floors	1,305	Available
3rd	1,579	Available
2nd	1,473	Available
1st	1,471	Available
<b>Total</b>	<b>5,828</b>	



## Viewing & Further Information

**Ollie Friend**

0203 854 9909 | 07493 194131

[Ofriend@shbre.co.uk](mailto:Ofriend@shbre.co.uk)

**Rhys Evans**

07788 724400

[revans@shbre.co.uk](mailto:revans@shbre.co.uk)

**Sean Cunningham (Edward Charles & Partners)**

020 7009 2300 | 07827 985858

[scunningham@edwardcharles.co.uk](mailto:scunningham@edwardcharles.co.uk)

**Jamie Shuttle (Edward Charles & Partners)**

020 7009 2306 | 07788 414332

[jshuttle@edwardcharles.co.uk](mailto:jshuttle@edwardcharles.co.uk)

**SHB/**

Find out more @ [shbre.co.uk](https://shbre.co.uk)

