

# BILTMORE

20080 Stevens Creek Blvd, Cupertino, CA

±1,271 SF

FULLY BUILT OUT 2ND GEN  
RESTAURANT SPACE AVAILABLE







**MATT SWEENEY** msweeney@theeoniccompany.com | (408) 863-1444 | CaIDRE: 01746896

**RON CRUZ** rcruz@theeoniccompany.com | (408) 400-7003 | CaIDRE: 02018499





# PROJECT HIGHLIGHTS

-  Fully Built Out Second Generation Restaurant Space in Excellent Condition
-  Highly Visible Storefront Facing Stevens Creek Boulevard with 34,030 Cars Per Day
-  Monument Signage Available
-  Ample Parking Easily Accessible

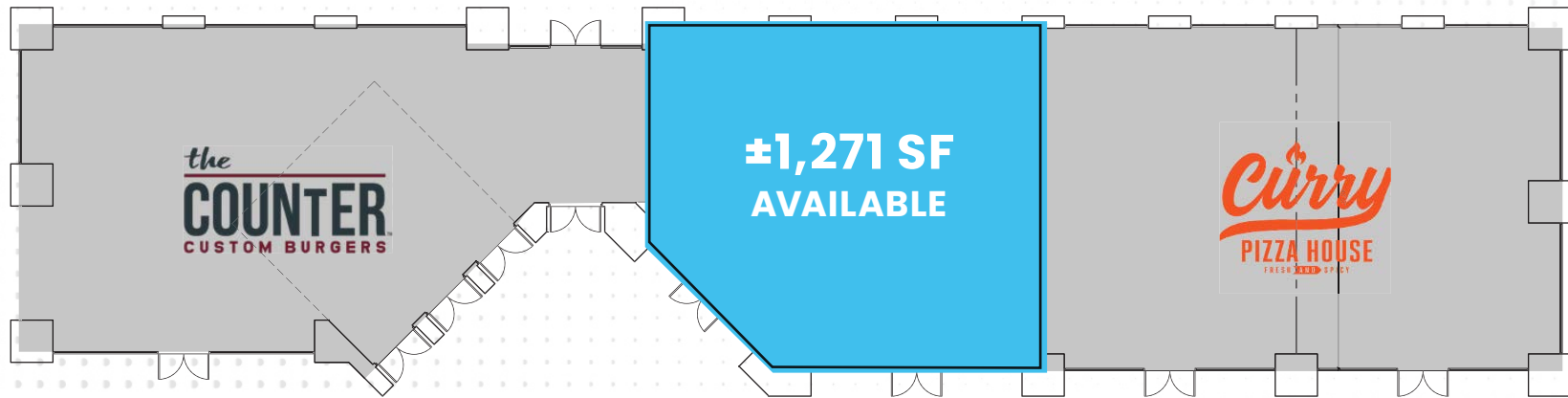
DEMOGRAPHICS	1 MILE	3 MILES	5 MILES
Population	22,808	219,925	501,298
Avg. HH Income	\$290,009	\$278,563	\$262,100
Daytime Population	26,845	197,653	486,050

TRAFFIC COUNTS	
Stevens Creek Blvd	34,030 ADT
N Balney Ave	6,411 ADT
Fwy 280	78,200 ADT

Source: 2026 Esri.

PROPERTY

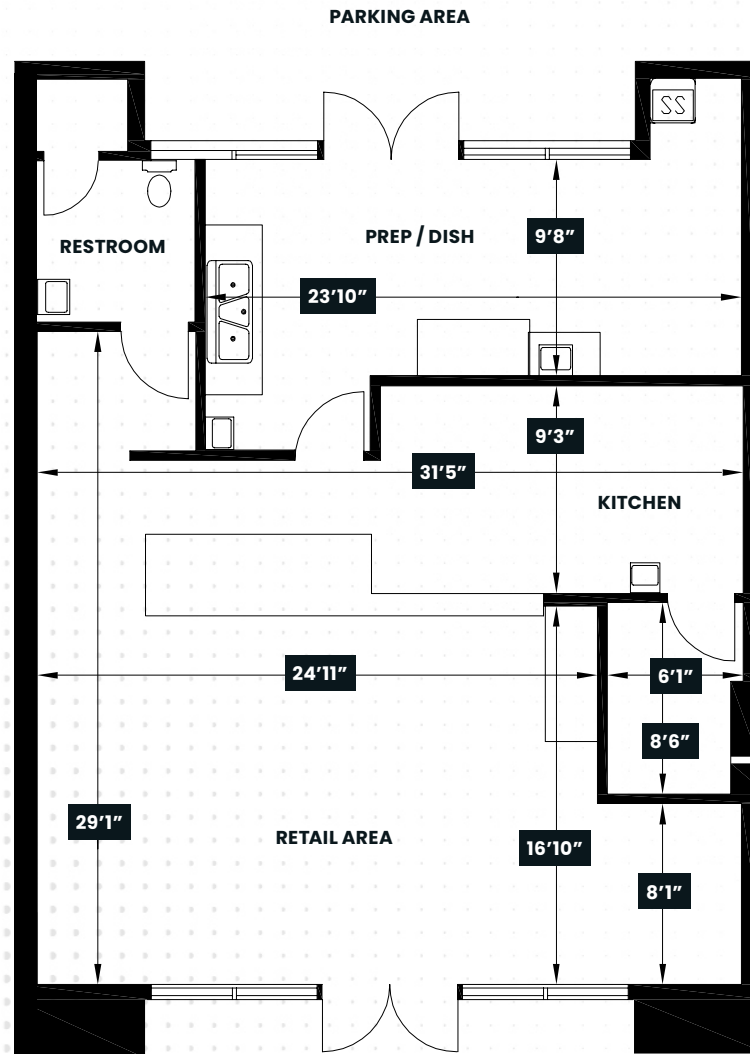
# SITE PLAN



**STEVENS CREEK BLVD: 34,030 ADT**

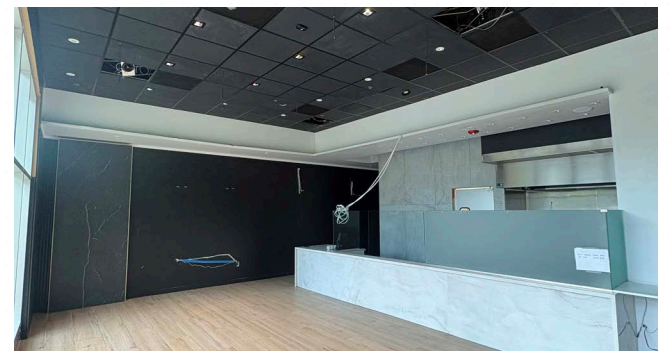
# FLOOR PLAN

## UNIT 104



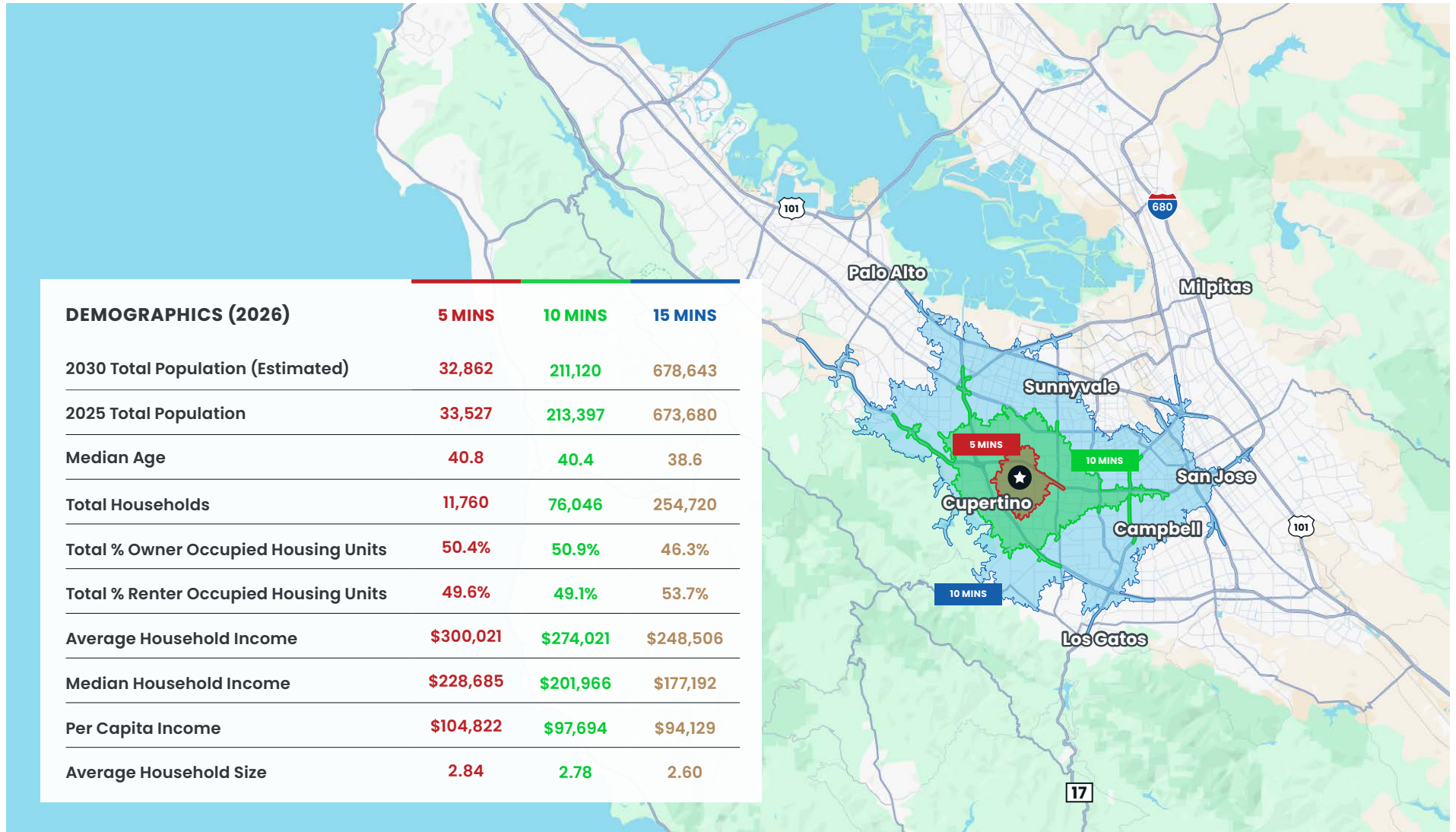
Note: Floor plan NOT to scale.

# PROPERTY GALLERY



# DEMOGRAPHICS

## DRIVE TIME





**THE RISE**  
 (FORMER VALLCO TOWN CENTER)  
 FUTURE PROJECT

Mixed-use development with 2,402 units of housing, approximately 1.97 million square feet of office space, and about 425,000 square feet of retail uses.



**BILTMORE**

STEVENS CREEK BLVD: 34,030 ADT

N WOLFE RD: 25,790 ADT

JUNIPERO SERRA FWY: 78,200 ADT

LAWRENCE EXPY



**TOLL BROTHERS**  
 PROPOSED DEVELOPMENT

55 townhome condominium units, with 10 AUDs, across 10, three-story buildings, on three contiguous parcels, totaling 2.72 acres.



BOLLINGER RD



MILLER AVE: 15,810 ADT



# BILTMORE

20080 Stevens Creek Blvd, Cupertino, CA

## MATT SWEENEY

msweeney@theeoniccompany.com

(408) 863-1444

LIC. 01746896

## RON CRUZ

rcruz@theeoniccompany.com

(408) 400-7003

LIC. 02018499