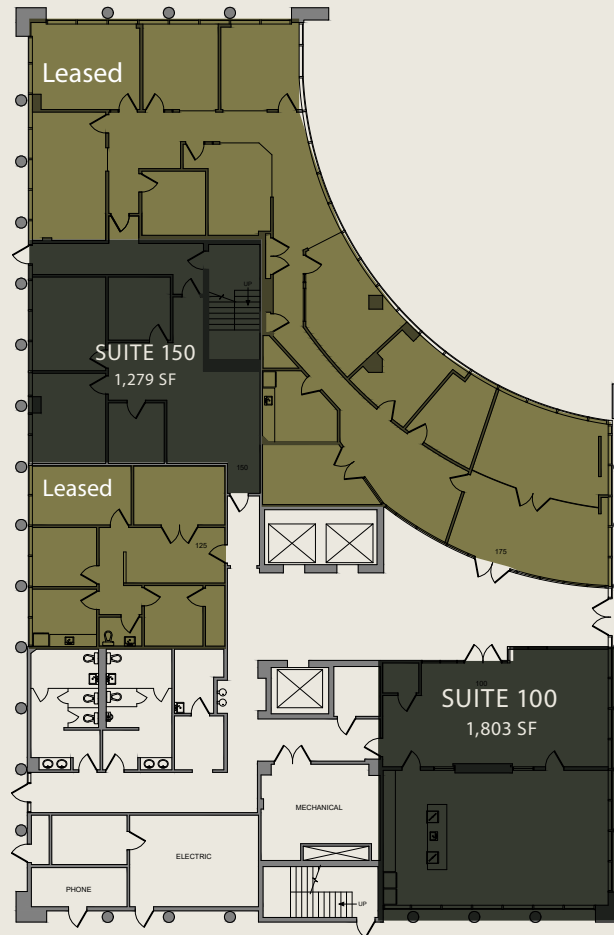


Bldg 925

South Federal Hwy



1ST FLOOR

Available:

SUITE 100: 1,803 SF

SUITE 150: 1,279 SF

For more information contact:

John Criddle

Executive Vice President

+1 561 283 5176

john.criddle@cbre.com

Joe Freitas

Senior Vice President

+1 561 512 8844

joe.freitas@cbre.com

Maxwell Pawk

Vice President

+1 561 393 1670

max.pawk@cbre.com

Nicholas Mulligan

Associate

+1 561 393 1680

nicholas.mulligan@cbre.com

