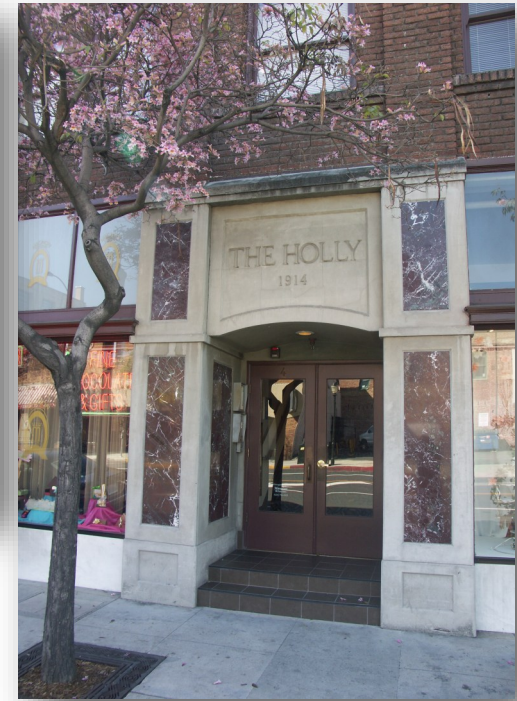


Office Space for Lease in Holly Building



4 East Holly Street

Suite #217 Approx: 632 R.S.F.

Located on charming Holly Street in Old Pasadena, this office space is perfect for any professional. Quiet and convenient, within walking distance of all the amenities of Old Pasadena. There is a shared common kitchenette, above standard tiled restrooms, wood trim, special lighting and plenty of windows affording natural light. The secured front door allows 24-hour access. All units have adjustable HVAC.

Street parking free until 11 a.m. with 90 mins free parking in city structures

Sauvé & Associates
Commercial Real Estate

Norm Sauvé nsauve@sauverec.com Direct Line: 626.688.3449 DRE #00937271

Sauvé & Associates, Inc. 626.585.4321 DRE #02117417

12 South Raymond Ave., Suite A, Pasadena, CA 91105