

19275 SLOVER AVENUE

BLOOMINGTON, CA 92316

± 261,632 SF FOR LEASE



FOR MORE INFORMATION, PLEASE CONTACT:

Austin Hill
SVP / Principal
DRE # 01921364
909.373.2732
ahill@lee-assoc.com

Jeff Smith
SVP / Principal
DRE # 01186136
909.989.7771
jsmith@lee-assoc.com

Tyler Plata
Senior Associate
DRE # 02083579
909.373.2948
tplata@lee-assoc.com

Holden Edmondson
Associate
DRE # 02124931
909.373.2916
hedmondson@lee-assoc.com



INDUSTRIAL WAREHOUSE | 261,632 SF

PROPERTY HIGHLIGHTS

- » 261,632 SF Building
- » ± 3,777 SF Spec Office Space*
- » 36' Clear Height
- » 35 Dock High Doors (9'x10')
- » 2 Grade Level Doors (12'x15')
- » ESFR Sprinkler System
- » 3% Skylights
- » 277/480 volt, 3-phase Power
- » LED Lighting
- » 213' Truck Court
- » 80 Trailer Parking Stalls
- » 120 Auto Parking Spaces
- » 50'x60' Column Spacing

*Entitled to up to 10,000 SF of Office Space



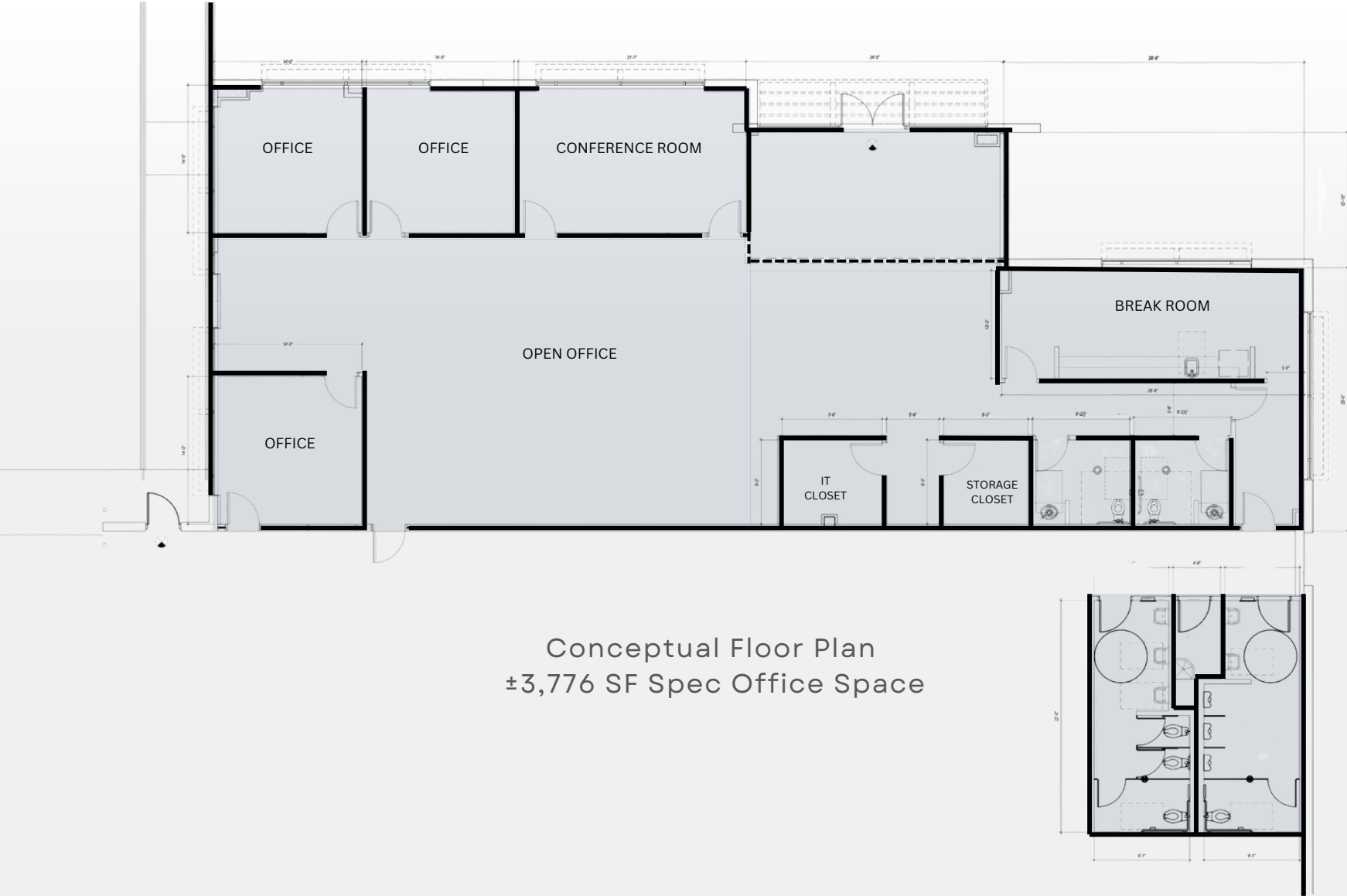
FOR LEASE | 19275 SLOVER AVE

All information furnished regarding property for sale, rental, or financing is from sources deemed reliable, but no warranty or representation is made to the accuracy thereof and same is submitted to errors, omissions, change of price, rental, or other conditions prior to sale, lease or financing or withdrawal without notice. No liability of any kind is to be imposed on the broker herein. 3535 Inland Empire Blvd, Ontario, CA 91764 | Corporate ID 00976995

LEE & ASSOCIATES
COMMERCIAL REAL ESTATE SERVICES

CROW HOLDINGS

OFFICE FLOOR PLAN | 3,776 SF



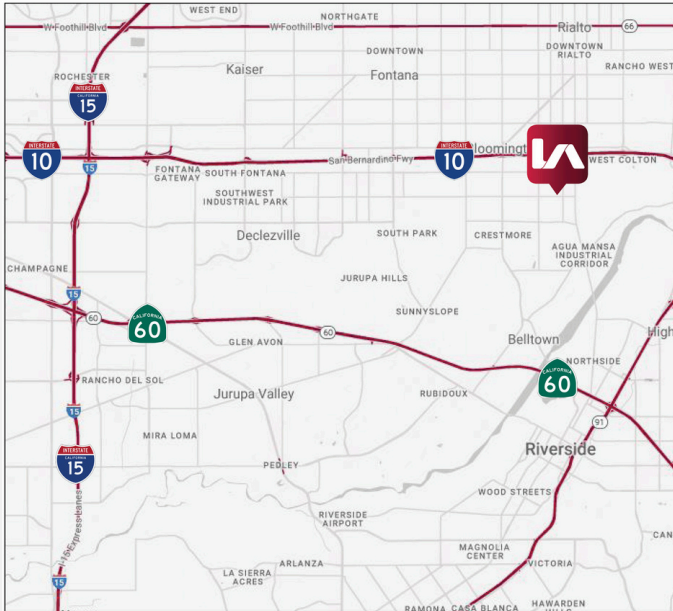
Conceptual Floor Plan
±3,776 SF Spec Office Space

FOR LEASE | 19275 SLOVER AVE

All information furnished regarding property for sale, rental, or financing is from sources deemed reliable, but no warranty or representation is made to the accuracy thereof and same is submitted to errors, omissions, change of price, rental, or other conditions prior to sale, lease or financing or withdrawal without notice. No liability of any kind is to be imposed on the broker herein. 3535 Inland Empire Blvd, Ontario, CA 91764 | Corporate ID 00976995



LOCATION AND TENANT MAPS



San Bernardino Int'l Airport
10 miles



Ontario Int'l Airport
12 miles



Ports of LA and Long Beach
68 miles



FOR LEASE | 19275 SLOVER AVE

All information furnished regarding property for sale, rental, or financing is from sources deemed reliable, but no warranty or representation is made to the accuracy thereof and same is submitted to errors, omissions, change of price, rental, or other conditions prior to sale, lease or financing or withdrawal without notice. No liability of any kind is to be imposed on the broker herein. 3535 Inland Empire Blvd, Ontario, CA 91764 | Corporate ID 00976995



CONSTRUCTION STATUS



NEARING COMPLETION



FOR LEASE | 19275 SLOVER AVE

All information furnished regarding property for sale, rental, or financing is from sources deemed reliable, but no warranty or representation is made to the accuracy thereof and same is submitted to errors, omissions, change of price, rental, or other conditions prior to sale, lease or financing or withdrawal without notice. No liability of any kind is to be imposed on the broker herein. 3535 Inland Empire Blvd, Ontario, CA 91764 | Corporate ID 00976995



19275 SLOVER AVENUE

BLOOMINGTON, CA 92316

± 261,632 SF FOR LEASE



FOR MORE INFORMATION, PLEASE CONTACT:

Austin Hill
SVP / Principal
DRE # 01921364
909.373.2732
ahill@lee-assoc.com

Jeff Smith
SVP / Principal
DRE # 01186136
909.989.7771
jsmith@lee-assoc.com

Tyler Plata
Senior Associate
DRE # 02083579
909.373.2948
tplata@lee-assoc.com

Holden Edmondson
Associate
DRE # 02124931
909.373.2916
hedmondson@lee-assoc.com

