

2066 CLARMAR WAY

SAN JOSE, CALIFORNIA

MEDICAL OFFICES FOR LEASE



HealthMedRealty

260 Los Gatos-Saratoga Rd., Los Gatos, CA 95030
Lic. 01902032 | 408.217.6000
www.healthmedrealty.com

JEFF PETULLA

408-888-4859

jeff@healthmedrealty.com

Lic. #00852399

2066 CLARMAR WAY

SAN JOSE, CALIFORNIA, 95128

PROPERTY HIGHLIGHTS

- **SUITE A** (1st Floor): ±750 RSF
- **SUITE C** (2nd Floor): ±750 RSF
- Good for Medical, Counseling, Chiropractic, and General Office Use
- Easy access to Highways 880 & 280
- Near Santana Row & Westfield Mall, & O'Connor Hospital
- Ample Onsite Parking
- Elevator Served

LEASE RATE

- \$3.50/RSF GROSS

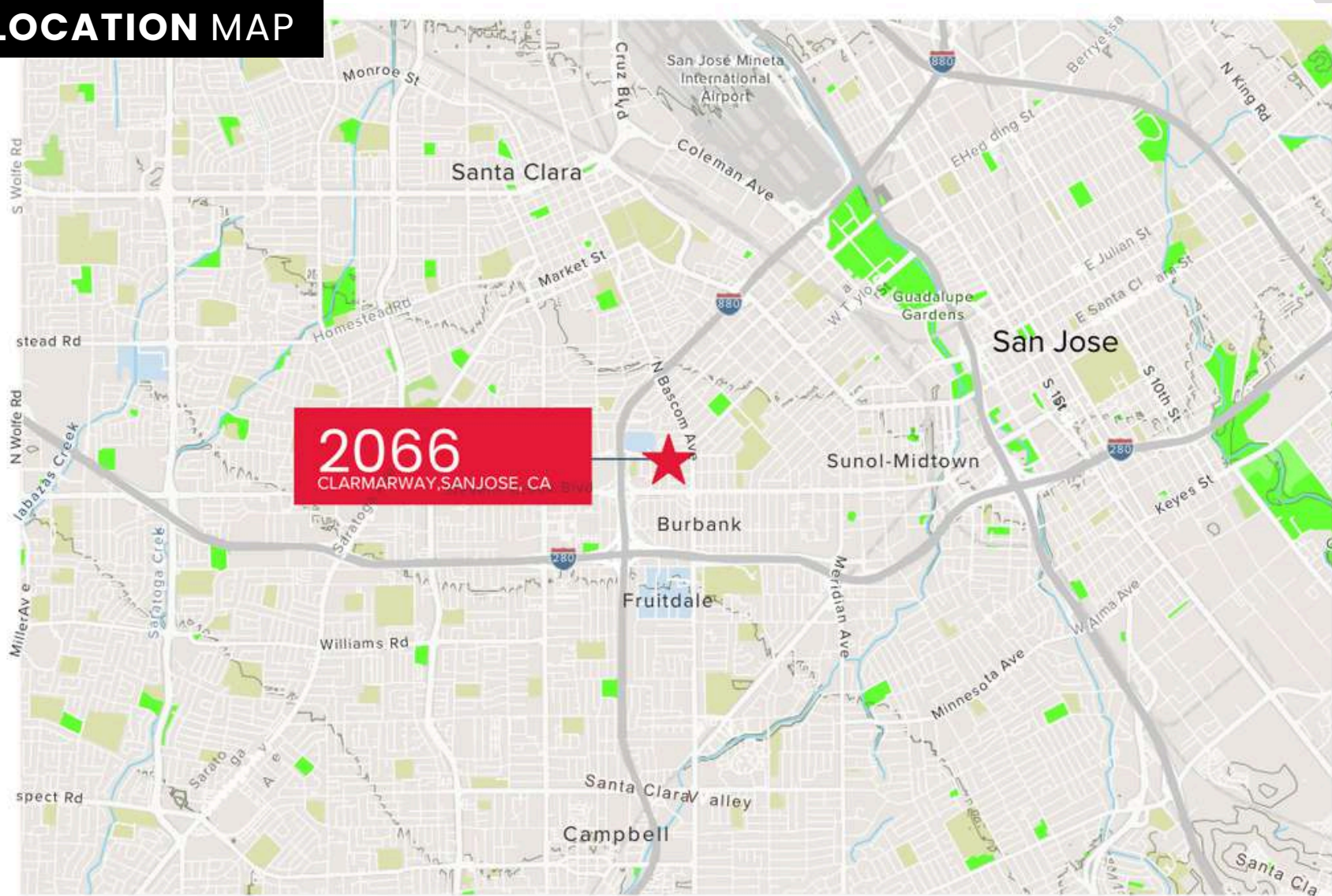


HealthMed Realty

2066 CLARMAR WAY

SAN JOSE, CALIFORNIA, 95128

LOCATION MAP

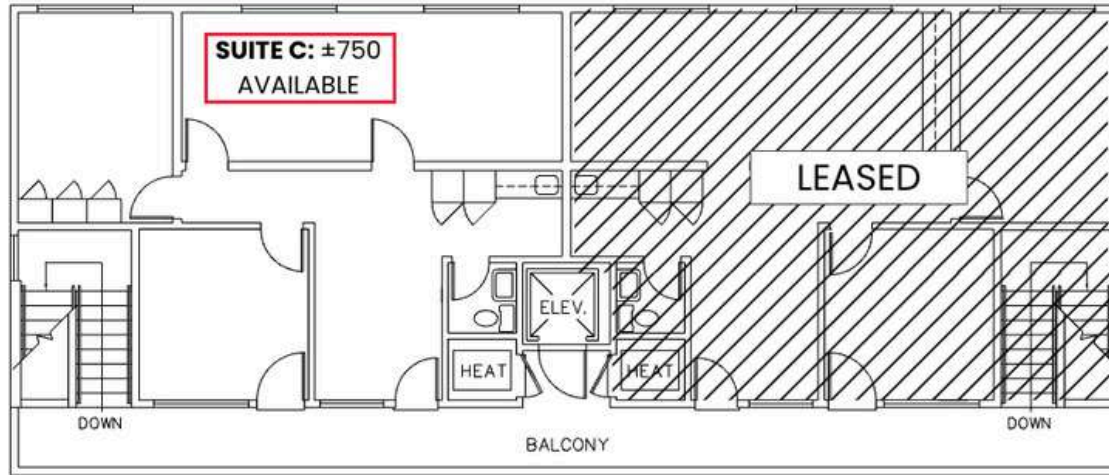


2066 CLARMAR WAY

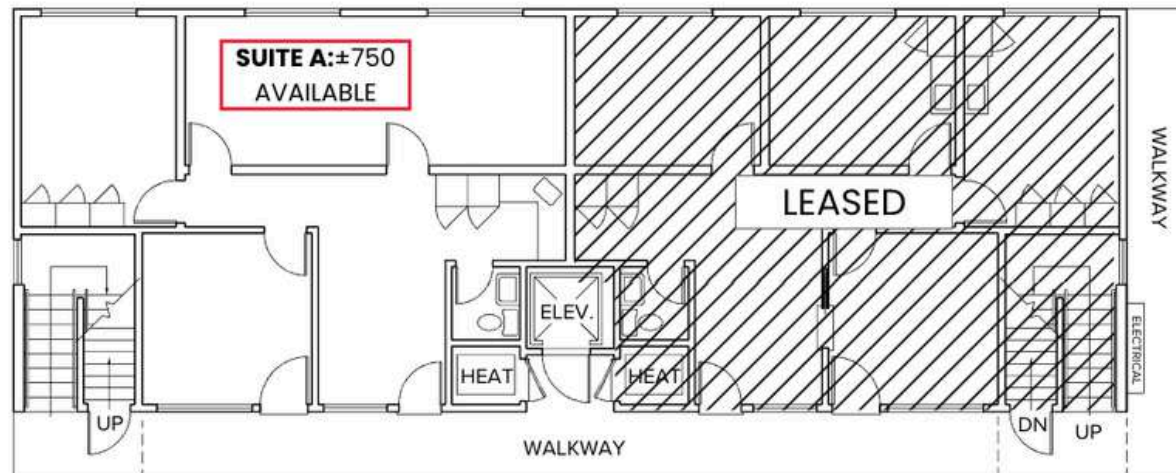
SAN JOSE, CALIFORNIA, 95128

FLOOR PLANS

SECOND FLOOR



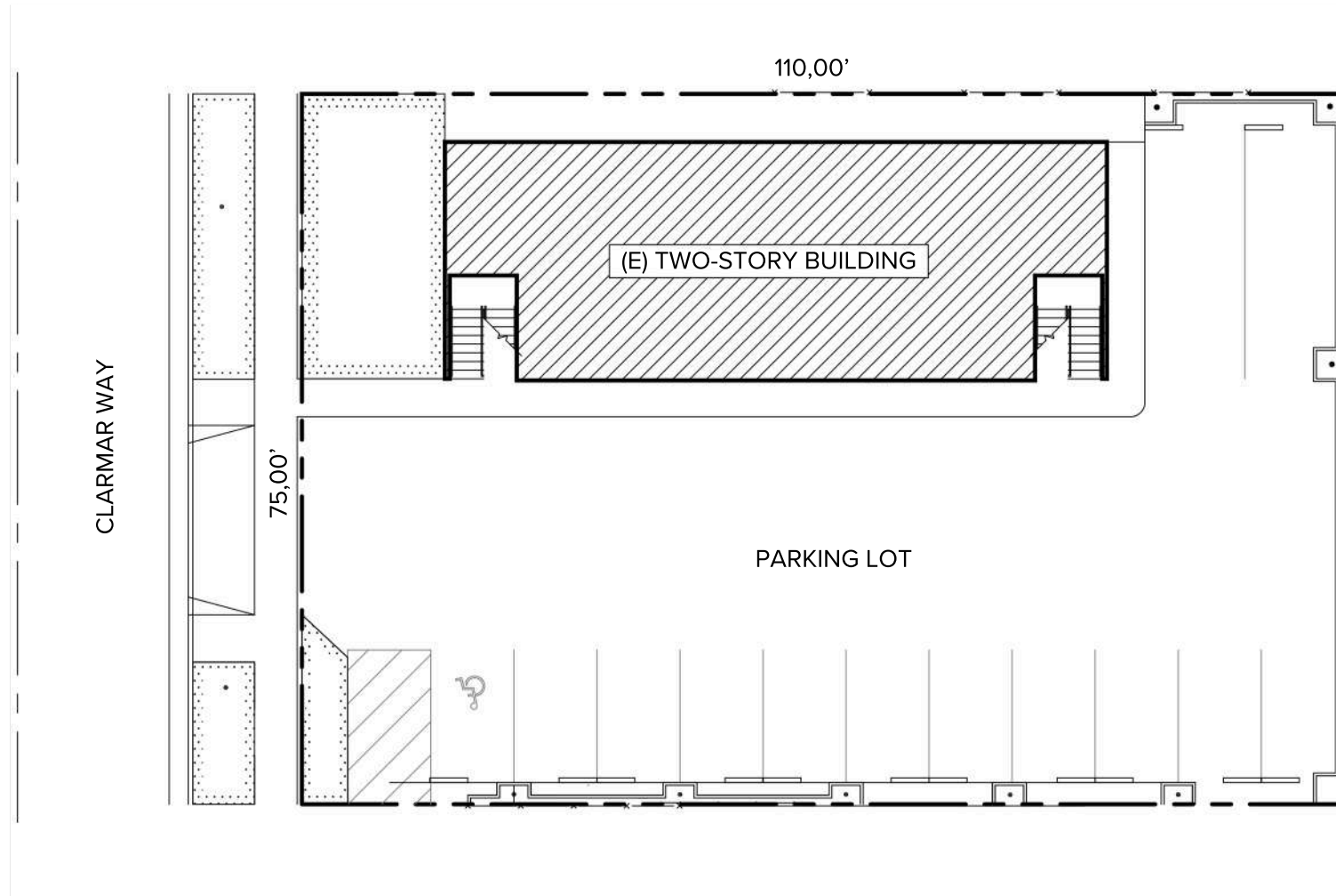
FIRST FLOOR



2066 CLARMAR WAY

SAN JOSE, CALIFORNIA, 95128

SITE PLAN



2066 CLARMAR WAY

SAN JOSE, CALIFORNIA, 95128

PROPERTY PHOTOS



HealthMedRealty

2066 CLARMAR WAY

SAN JOSE, CALIFORNIA, 95128

PROPERTY PHOTOS



2066 CLARMAR WAY

SAN JOSE, CALIFORNIA, 95128

AMENITIES MAP



2066 CLARMAR WAY

SAN JOSE, CALIFORNIA



HealthMedRealty

260 Los Gatos-Saratoga Rd., Los Gatos, CA 95030
Lic. 01902032 | 408.217.6000
www.healthmedrealty.com

No warranty or representation, express or implied is made as to the accuracy of the information contained herein, and the same is submitted subject to errors, omissions, changes of price, rental or other conditions, withdrawal without notice.

JEFF PETULLA
408-888-4859

jeff@healthmedrealty.com
Lic. #00852399