

FEATURED SPACE

Goldenwest Circle Business Park

15136 Goldenwest Circle, Westminster, CA 92683



±3,000 SF



SPACE FEATURES

±600 Sq. Ft. of Office

Extensive Renovation

One (1) Grade-Level Roll Up Door (12' x 12')

100 Amps 120/240V (verify)

±14 ft. Warehouse Clearance

Institutionally Owned

Single Story Flex/Warehouse Space

LOCATION FEATURES

Close Proximity to I-405 and SR-22

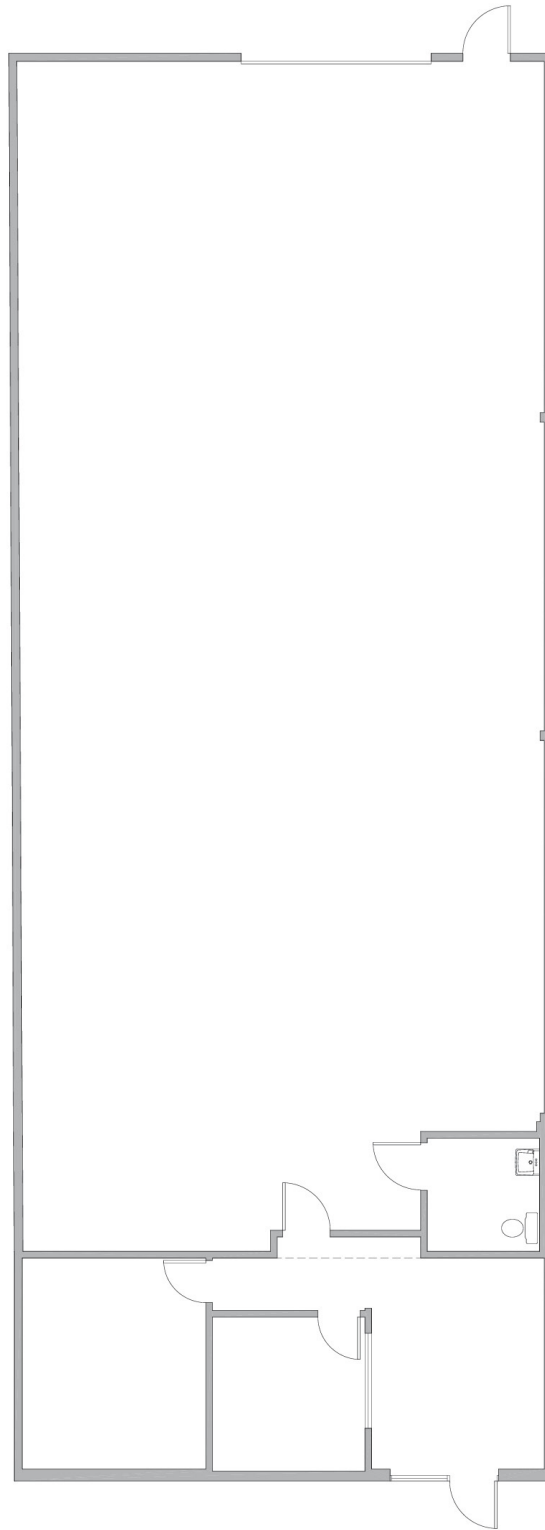
Excellent Freeway Access

CONTACT US

Hayden Socci, SIOR, CCIM

(714) 935-2379 / hsocci@voitco.com

FLOOR PLAN



Floor plan is approximate and may not be to scale.