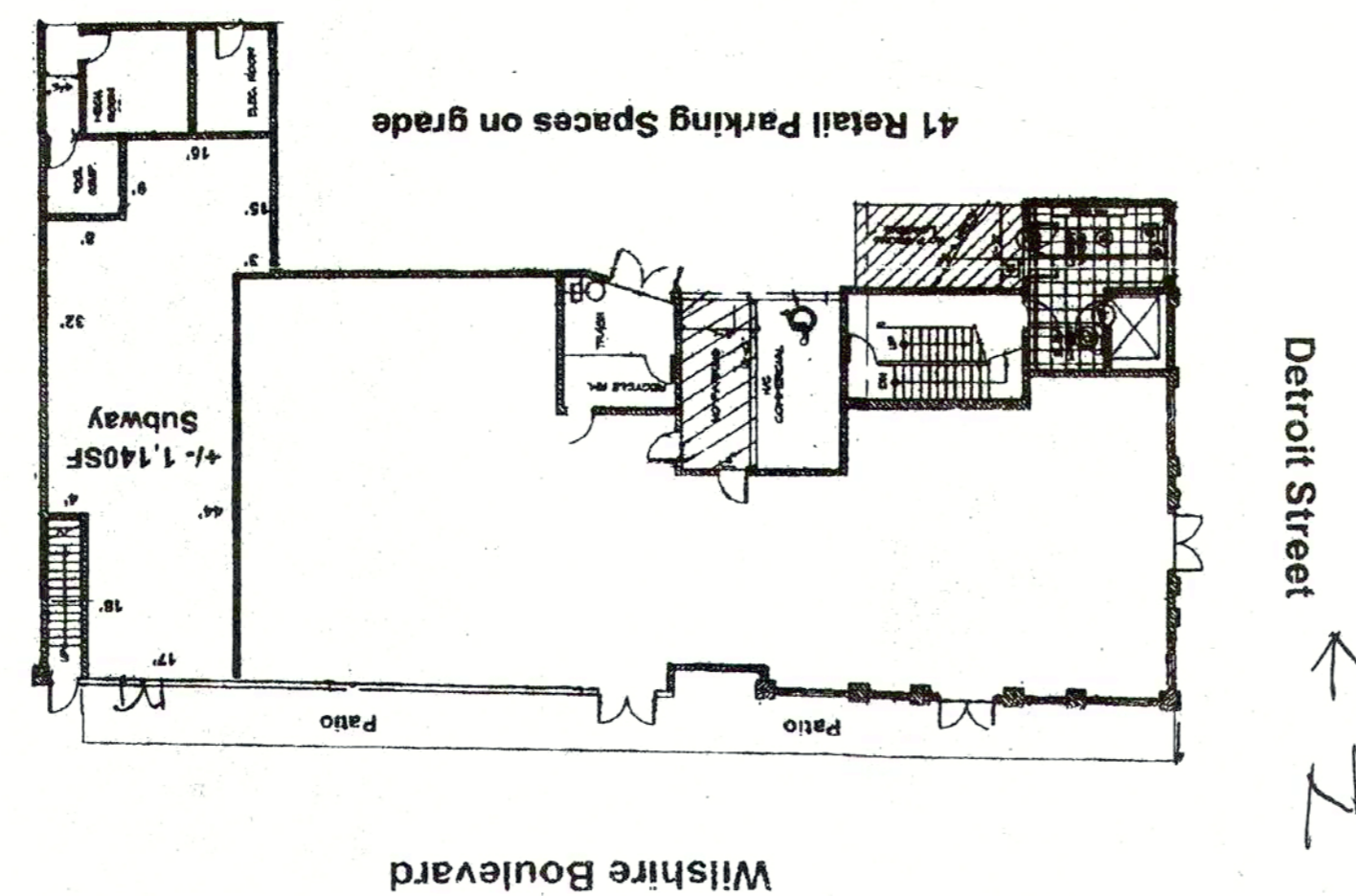


# SUBWAY



SITE PLAN  
N.T.S.

NOTES:

- SPRINKLED BLDG.
- TYPE V NON-RATED CONST.
- GROUP "B" OCCUPANCY
- MAX. NO. OF EMPLOYEES (4-PER SHIFT)

CUSTOMER AREA — 490 #  
 SERVICE AREA — 505 #  
 995 #

REVISIONS	BY

DESIGNER  
 DOCTORS ASSOCIATE INC  
 325 BIG DR.  
 MILFORD, CT. 06460

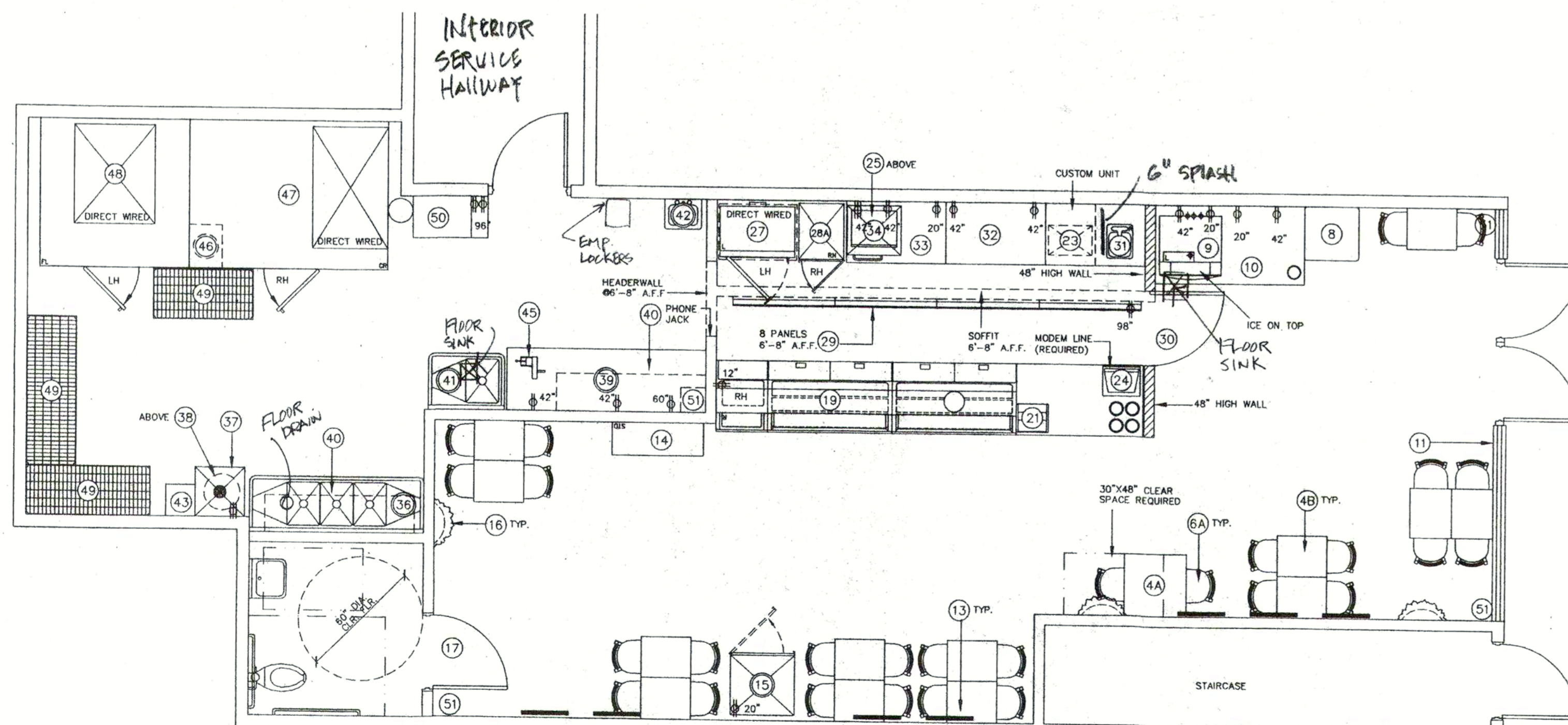
OWNER  
 HEBHEMIAN/KARMA  
 5353 WILSHIRE BLVD.  
 LOS ANGELES, CA. 90036

PROJECT ADDRESS  
 SUBWAY # 2A437  
 5353 WILSHIRE BLVD.  
 LOS ANGELES, CA. 90036

DRAWN
CHECKED
DATE
SCALE
JOB NO.
SHEET
A-1
OF 8 SHEETS

## FURNITURE AND EQUIPMENT LEGEND

#	ITEM	MANUFACTURER	ORDERED FROM	QTY	DESCRIPTION
<b>CUSTOMER AREA</b>					
4A	30" X 30" TABLE	PLYMOLD	DAI	1	( ) 30" HIGH FREESTANDING W/ 22" X 22" CROSS BASE (X) CANTILEVER MOUNT. TOP HAS TWO COLOR INLAY (WILLOWSTONE & SIERRA MARBLE) WITH DURA EDGE.
4B	20" X 24" TABLE	PLYMOLD	DAI	13	30" HIGH W/ FREESTANDING 22" X 22" CROSS BASE. TWO COLOR INLAY (WILLOWSTONE & SIERRA MARBLE) WITH DURA EDGE.
6A	CHAIR	PLYMOLD	DAI	28	QUEST CHAIR W/ UPHOLSTERED SEAT OR DUR-A-SEAT TO BE ORDERED IN THE FOLLOWING COLORS: HUNTER, WHEAT AND FIRE RED. FRAME COLOR IS SEPIA.
8	TRASH RECEPTACLE	PLYMOLD	DAI	1	(X) 26" X 26" ( ) 16 5/8" X 18 5/8" DURA EDGE TRASH RECEPTACLE W/ IRISH MAPLE LAMINATE FINISH.
9	SODA MACHINE	COKE	LOCAL BOTTLER	1	SEE BOTTLER FOR SPECS. INSTALLED BY BOTTLER.
10	BEVERAGE DESTINATION CENTER	DUKE MANUFACTURING	DAI	1	( ) RH (X) LH BEVERAGE PLACEMENT ( ) 48" ( ) 36" (X) 72" ( ) 84". STAINLESS STEEL TOP. IRISH MAPLE LAMINATE FINISH. INSTALLED BY G.C.
11	RED NEON "OPEN" SIGN	HINSON DISPLAY/NEON GLASS WORKS	DAI/G.C.	1	SEE MANUFACTURER FOR SPECS. INSTALLED BY G.C.
13	WALL ART (UPSCALE)	MODERNISTIC / SUNGLO	DAI	7	23" X 50" WALL HUNG PRINT(S) ON CINTRA WITH 1/2" CLEATS ATTACHED FOR HANGING.
14	CHIP RACK	FRITO-LAY	DAI	1	(X) 44" W X 16 3/8" D X 68" H ( ) 44" W X 16 3/8" D X 54" H ( ) 33 1/4" W X 16 3/8" D X 68" H FLOOR RACKS. / ( ) 24" W X 12" D X 22" H ( ) 36" W X 12" D X 22" H COUNTERTOP RACKS. THROUGH LOCAL DIST.
15	DISPLAY REFRIGERATOR	COCA-COLA/LOCALLY SOURCED	LOCAL BOTTLER/G.C.	1	( ) COUNTER TOP MODEL (X) 1 DOOR FLOOR MODEL ( ) 2 DOOR FLOOR MODEL.
16	WALL PLANT	GRACE DESIGNS	DAI	3	WALL HUNG SILK PLANT. HANG LEVEL WITH BOTTOM OF UPPER DECORATIVE TRIM.
17	INTERIOR DOOR	LOCAL	G.C.	1	SOLID CORE WOOD DOOR (STAIN MINWAX #235 CHERRY & POLYURETHANE W/ MINWAX FAST DRYING SATIN). METAL FRAME (PAINT SHERWIN WILLIAMS #SW6356 COPPER MOUNTAIN). INSTALLED BY G.C.
<b>SERVICE AREA</b>					
19	FRONT COUNTER	DUKE MANUFACTURING	DAI	1	TOTAL LENGTH 17'-2" ( ) LH (X) RH .25" HOT FOOD UNIT ( ) 2 .60" COLD PAN UNIT .61" CASH UNIT. N/A HOT FOOD EXTENSION N/A CASH EXTENSION N/A BEVERAGE EXTENSION. INSTALLED BY G.C. ULS APPROVED. ELECTRICAL CONNECTIONS AND WIRING TO LOCAL AND STATE CODE REQUIREMENTS AS DETERMINED BY G.C. OR ELECTRICIAN.
21	COOKIE DISPLAY CASE	ADVANCED DISPLAYS IN PLASTICS, INC	DAI	1	DISPLAY CASE ON TOP OF SUB-WRAP AND NAPKIN RISER. MADE OF CLEAR ACRYLIC.
23	SAFE	J. ROSS BOLES/C.S.S./TIDEL	DAI	1	( ) TIME LOCK ( ) SHOE BOX ( ) QUICK DROP (X) TIDEL TACC. INSTALLED BY G.C. IN SERVICE AREA.
24	SUBSHOP 2000 P.O.S.	MIROS SYSTEMS/DELL/SUBTOTAL	DAI	1	PC BASED POINT OF SALE SYSTEM. REQUIRES DEDICATED POWER SOURCE WITH ISOLATED GROUND TO BREAKER.
25	MICROWAVE	AMANA/SHARP	DAI	1	*5-20R OUTLET REQUIRED. 1200 WATT, 120V/60HZ/1PH, 20 AMP CIRCUIT. DEDICATED CIRCUIT REQUIRED.
27	BREAD OVEN	DUKE MFG. / NU-VU / MIWE	DAI	1	( ) DUKE (X) NU-VU ( ) MIWE. DEDICATED CIRCUIT REQUIRED. DIRECT WIRED. INSTALLED BY G.C. NSF APPROVED.
28	ENCLOSED BREAD CABINET	LOCKWOOD / NU-VU	DAI	1	( ) LOCKWOOD (X) NU-VU. INSTALLED BY G.C. NSF APPROVED.
29	MENUBOARD	VGS / TRANSLITE SONOMA	DAI	4	MENUBOARD: (4) 2' X 4' ( ) 2' X 2'. LIGHT FIXTURES: ( ) 2' ( ) 4' ( ) 8' ( ) 16' MOUNT TO TOP OF MENUBOARD. SINGLE OUTLET REQUIRED. INSTALLED BY G.C.
30	COUNTER ENTRANCE	MARLITE / G.C.	DAI/G.C.	1	SELF-CLOSING, PREFRAMED & PREFINISHED BY MARLITE OR SEE BACK-UP SHEETS FOR CONSTRUCTION SPECS. INSTALLED BY G.C.
31	BACK COUNTER W/ HAND SINK	DUKE MANUFACTURING	DAI	1	(X) RH ( ) LH HAND SINK ( ) 24" ( ) 36" (X) 48" ( ) 60" ( ) 72" LENGTH. STAINLESS STEEL TOP. IRISH MAPLE LAMINATE FINISH. INSTALLED BY G.C.
32	BACK COUNTER	DUKE MANUFACTURING	DAI	1	( ) 24" ( ) 36" (X) 48" ( ) 60" ( ) 72" LENGTH. STAINLESS STEEL TOP. IRISH MAPLE LAMINATE FINISH. INSTALLED BY G.C.
33	REFRIGERATED BACK COUNTER	DUKE MANUFACTURING	DAI	1	48" LENGTH. BACK COUNTER WITH UNDER-COUNTER REFRIGERATOR. STAINLESS STEEL TOP. IRISH MAPLE LAMINATE FINISH. INSTALLED BY G.C.
34	RAPID COOK OVEN	TURBOCHEF TECHNOLOGIES, INC	DAI	1	MICROWAVE/CONVECTION OVEN. NAMEPLATE RATING - 30 AMP @ 208/240 VAC, 60 HZ, 1 PHASE, NEMA 6-30 PLUG.
<b>BACKROOM AREA</b>					
36	SINK	DUKE MANUFACTURING	DAI	1	(3) COMPARTMENT(S) (2) DRAINBOARD(S). (X) 18" ( ) 24" DRAINBOARD SIZE. INSTALLED BY G.C. ULS APPROVED.
37	MOP SINK	LOCALLY SOURCED	G.C.	1	FLOOR LEVEL SINK. 2' X 2' (PREFERRED). ACQUIRE LOCALLY. INSTALLED BY G.C.
38	HOT WATER TANK	LOCALLY SOURCED	G.C.	1	ACQUIRE LOCALLY. INSTALLED BY G.C. <i>20 GAL ELECT. 12 KW MIN.</i>
39	S.S. WORKTABLE	DUKE MANUFACTURING	DAI	1	( ) 24" ( ) 36" ( ) 48" ( ) 60" ( ) 72" ( ) 84" (X) 96" ( ) 108" ( ) 120" X 30". (X) W/ GALVANIZED UNDERSHELF ( ) WITHOUT UNDERSHELF.
40	WALL SHELF	INTER METRO	DAI	2	SUPER RECTA BRITE. EPOXY COATED, WALL MOUNTED SHELVES, AVAILABLE IN VARIOUS SIZES. INSTALLED BY G.C.
41	VEGETABLE SINK	DUKE MANUFACTURING	DAI	1	(1) COMPARTMENT(S) (1) DRAINBOARD(S). (X) 18" ( ) 24" DRAINBOARD SIZE. INSTALLED BY G.C. ULS APPROVED.
42	HAND SINK	DUKE MANUFACTURING / LOCAL	DAI/G.C.	1	WALL MOUNTED, 10" X 14" X 6", OR SEE OWNER FOR SPECS. SUBJECT TO HEALTH CODE APPROVAL.
43	CLEANING PRODUCT RACK	SSDC	DAI	1	DISPENSING STATION FOR CLEANING PRODUCTS.
45	NEMCO EASY-SLICER	NEMCO, INC.	DAI	1	MANUAL SLICER MOUNTED ON STAINLESS STEEL TABLE TOP. NSF APPROVED.
46	RETARDER CABINET	LOCKWOOD	DAI	1	(X) WALK-IN ( ) REACH-IN. NSF APPROVED.
47	REFRIGERATOR	NORLAKE	DAI	1	( ) 8' X 6' (X) 8' X 8' ( ) 8' X 6' ( ) 5' X 6' ( ) 4' X 6' ( ) 3 DOOR ( ) 2 DOOR ( ) 1 DOOR ( ) OTHER. SELF-EVAPORATING. DIRECT WIRED. INSTALLED BY G.C. NSF APPROVED.
48	FREEZER	NORLAKE	DAI	1	( ) 8' X 6' ( ) 8' X 8' (X) 8' X 6' ( ) 5' X 6' ( ) 4' X 6' ( ) 3 DOOR ( ) 2 DOOR ( ) 1 DOOR ( ) OTHER. SELF-EVAPORATING. DIRECT WIRED. INSTALLED BY G.C. NSF APPROVED.
49	STORAGE UNITS	INTER METRO	DAI	3	( ) 14" X 48" ( ) 12" X 48" ( ) 12" X 60" ( ) 12" X 72". SUPER RECTA BRITE.
50	SODA STORAGE	COKE	LOCAL BOTTLER	1	SEE BOTTLER FOR SPECS. INSTALLED BY BOTTLER.
51	STEREO SYSTEM	DMX MUSIC	DMX/LOCAL	1	(SIMON BEXON 508-634-0714) RECEIVER AND AMPLIFIER WITH THREE SPEAKERS MOUNTED AND PROFESSIONALLY WIRED IN CEILING.



### GENERAL NOTES:

- CEILING HEIGHT IS 10'
- ELECTRICAL OUTLET HEIGHTS MEASURED TO BOTTOM OF BOX.
- ONE ELECTRICAL JUNCTION BOX TO BE LOCATED IN CEILING ABOVE EACH WINDOW.
- CUNO MODEL SW3-EL-1H WATER FILTRATION SYSTEM IS REQUIRED IN ALL NEW STORES THAT DISPENSE BEVERAGES (IN CANADA THE ECOLAB FRESH H2O REMAINS OPTIONAL). THE RECOMMENDED PLACEMENT FOR INSTALLATION IS REMOTE MOUNTING ONTO THE BACKROOM BEVERAGE SYRUP RACK OR MOUNTING ONTO BACKROOM WALL. OPTIONAL INSTALLATION MOUNTING INSIDE THE FRONT BEVERAGE COUNTER WHERE SPACE LIMITATIONS OCCUR. IN AREAS WHERE CHLORAMINE IS IN USE BY THE LOCAL MUNICIPALITY THE CUNO MODEL CF5CRC CANISTER IS REQUIRED TO BE INSTALLED IN ADDITION TO THE STANDARD SW3-EL-1H SYSTEM. REQUIRED: 1/2" INCOMING WATER LINE FEED WITH 1/2" BALL VALVE SHUTOFF AND 1/2" FPT CONNECTION MINIMUM 110 VOLT, 20 AMP ELECTRICAL SERVICE TO SUPPORT THE CARBONATOR AND WATER BOOSTER (MUST BE DEDICATED CIRCUIT).
- EXIT LIGHTS INSTALLED BY G.C. PER LOCAL CODE.
- EMERGENCY LIGHTS INSTALLED BY G.C. PER LOCAL CODE.
- EXTINGUISHERS, SMOKE AND FIRE DETECTION SYSTEMS INSTALLED BY G.C. PER LOCAL CODE.
- LABOR & MATERIAL SUPPLIED BY G.C. UNLESS OTHERWISE NOTED.
- ALL DIMENSIONS TO BE VERIFIED BY G.C. ON SITE.
- DECOR SPECIFICATIONS ARE TO BE SUBWAY'S "TUSCANY" SCHEME.

### NOTE:

THIS DRAWING IS FURNISHED BY DOCTORS ASSOCIATES INC. ("DAI") D/B/A SUBWAY. RECIPIENT MUST DETERMINE IF THIS DRAWING MUST BE SUBMITTED TO A LICENSED ARCHITECT OR SIMILAR PROFESSIONAL UNDER FEDERAL, STATE OR LOCAL LAW. ANY CHANGES MUST BE APPROVED BY DAI.

DO NOT SCALE DRAWING. WRITTEN DIMENSIONS TAKE PRECEDENCE OVER SCALED DIMENSIONS, AND SHALL BE VERIFIED IN THE FIELD BY THE GENERAL CONTRACTOR AND/OR FRANCHISEE/OWNER. ANY DISCREPANCY IN DIMENSIONS SHALL BE BROUGHT TO THE IMMEDIATE ATTENTION OF DAI'S AREA DEVELOPMENT AGENT OR DESIGNATED FIELD REPRESENTATIVE.

THE GENERAL CONTRACTOR AND EACH SUB-CONTRACTOR SHALL MAKE HIS OWN INSPECTIONS AND MEASUREMENTS. DAI AND SUBWAY SHALL NOT BE HELD RESPONSIBLE FOR THE ACCURACY OF DIMENSIONS AND FOR ERRORS AND OMISSIONS IN THE DRAWINGS IF WRITTEN CONFIRMATION HAD NOT BEEN RECEIVED BY DAI'S STORE DESIGN DEPARTMENT.

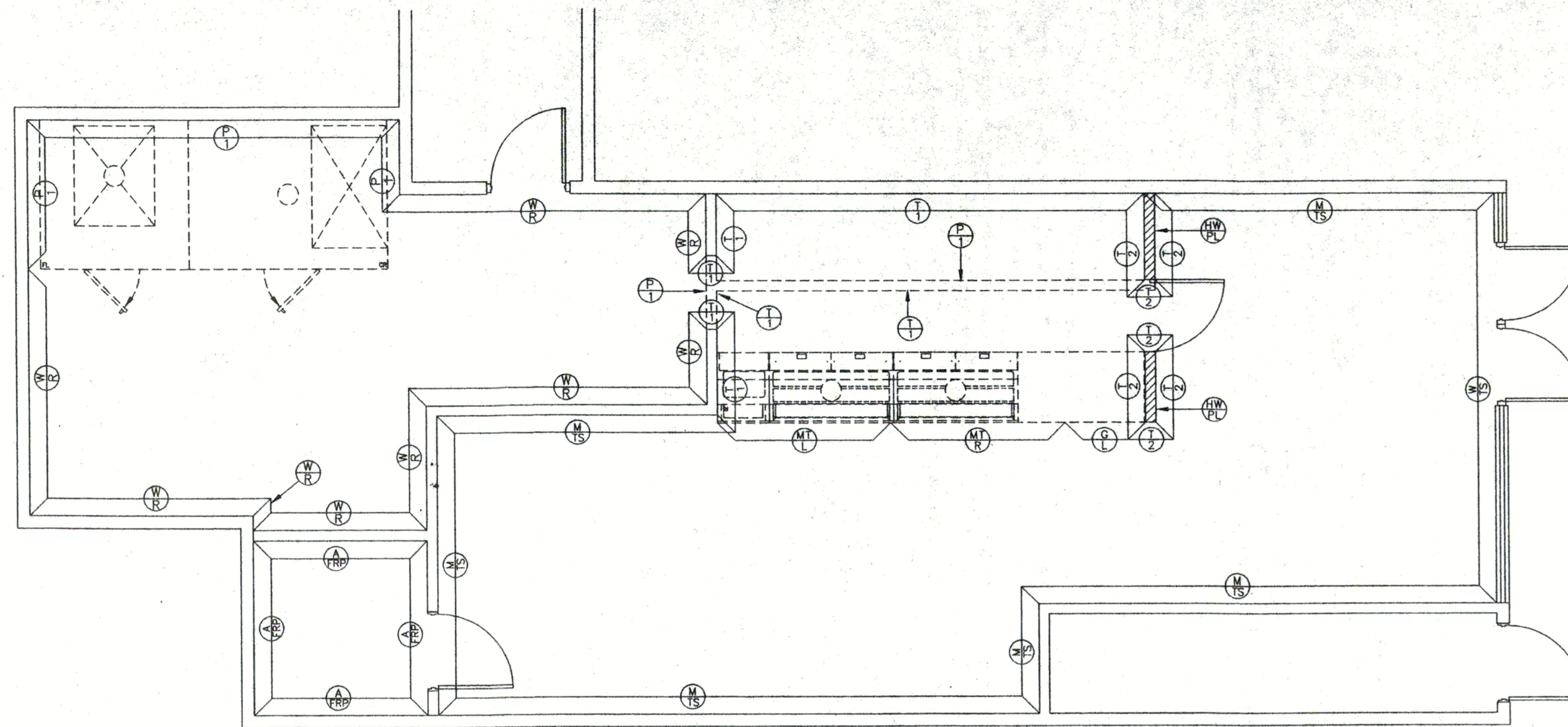
THIS DRAWING AND THE INFORMATIONAL CONTENT HEREOF IS THE CONFIDENTIAL PROPERTY OF SUBWAY AND DAI AND IS PROVIDED SOLELY FOR THE USE OF AUTHORIZED FRANCHISEES. THEIR AGENTS AND CONTRACTORS. RECIPIENT AGREES NOT TO REPRODUCE, COPY, USE OR TRANSMIT THIS DRAWING AND/OR ITS INFORMATIONAL CONTENT, IN WHOLE OR IN PART, OR ALLOW SUCH ACTION BY OTHERS FOR ANY PURPOSE, EXCEPT WITH THE WRITTEN PERMISSION OF DAI ACTING COPIES HEREOF UPON DEMAND.

STORE MUST BE CONSTRUCTED AS DESIGNED IN THESE FLOOR PLANS SUBJECT TO FEDERAL, STATE AND LOCAL LAWS. RECIPIENT IS RESPONSIBLE FOR ENSURING COMPLIANCE WITH ALL LAWS. IF MODIFICATIONS ARE NECESSARY, PLEASE CONTACT DAI'S DESIGN DEPARTMENT FOR WRITTEN APPROVAL OF THE REQUIRED CHANGES.

©2005 DOCTORS ASSOCIATES, INC.

<b>SUBWAY</b>		WORLD HEADQUARTERS 325 BIC DRIVE MILFORD, CT 06460 (203) 877-4281 (800) 888-4848
FRANCHISEE: <b>HASHEMIAN/KARAMA</b>	STORE # <b>24437</b>	
DEVELOPMENT AGENT: <b>RUTH SENDER</b>		
DESIGNED BY: <b>ANTHONY NAZZARO</b>	DATE: <b>SEPTEMBER 9, 2005</b>	
STORE ADDRESS: <b>5353 WILSHIRE BLVD.</b>		NO. <b>A-2</b>
<b>LOS ANGELES, CA</b>		
DRAWN BY: <b>AJN</b>	REVISIONS	BY DATE
REVIEWED BY:		
SCALE: <b>1/4"=1'</b>		





### WALL FINISH LEGEND (TUSCANY DECOR)

\*SEE TUSCANY BACK-UP SHEET 1 OF 3 FOR PROPER INSTALLATION OF WALLFINISHES IN CUSTOMER AND SERVICE AREAS.  
(SEE TUSCANY SUPPLEMENTAL TILE BACK-UP SHEET WHEN APPLICABLE)

SYMBOL	DESCRIPTION	MANUFACTURER	SUPPLY	INST.	NOTES:
(S)	SUBWAY MURAL	WOODRISTIC/SUNFLOW	D.A.I.	G.C.	VINYL WALLCOVERING (UPPER CHAIR RAIL MOLDING AND QUENTIN OR RUSTIC BRICK WALLCOVERING AS REQUIRED)
(T)	TUSCAN STUCCO WALLCOVERING	WOODRISTIC/SUNFLOW	D.A.I.	G.C.	VINYL WALLCOVERING (WITH LOWER CHAIR RAIL MOLDING)
(W)	WINDOW FRAME		G.C.	G.C.	PAINT SHERWIN WILLIAMS #SW6356 COPPER MOUNTAIN. (CITYSCAPE MURAL, UPPER CHAIR RAIL MOLDING AND QUENTIN OR RUSTIC BRICK WALLCOVERING AS REQUIRED)
(P)	TUSCAN STUCCO WALLCOVERING	WOODRISTIC/SUNFLOW	D.A.I.	G.C.	VINYL WALLCOVERING (WITH LOWER CHAIR RAIL MOLDING AS REQUIRED)
(C)	CABINET/WALL LAMINATE	WILSONART	G.C.	G.C.	IRISH MAPLE (#10862-60) - INSTALL GRAIN HORIZONTALLY
(M)	WALL CAPS	G.C.	G.C.	G.C.	HARDWOOD PLANK (STAINED MINWAX #235 CHERRY AND POLYURETHANED WITH MINWAX FAST DRYING CLEAR SATIN)
(F)	FRP OR PAINTED WALLS	MARLITE/G.C.	DAI/GC	G.C.	WHITE FRP PANELS OR OFF-WHITE SEMI-GLOSS PAINT
(R)	FIBERGLASS REINFORCED POLYESTER PANELS (FRP)	MARLITE	D.A.I.	G.C.	FRP PANELS - WATER RESISTANT COVERING. WHITE OR *ALMOND (*ALMOND OPTION ONLY IF PERMITTED BY HEALTH/BUILDING CODE)
(A)	FIBERGLASS REINFORCED POLYESTER PANELS (FRP)	MARLITE	D.A.I.	G.C.	ALMOND P-118 FRP PANELS - WATER RESISTANT COVERING.
(M)	MOSAIC TILE (RIGHT)	IMAGINE TILE	D.A.I.	G.C.	4 1/4" X 4 1/4" CERAMIC TILE. VEGETABLE GRAPHIC TILES FRAMED BY 1A (LIGHT CHERRY). SEE TUSCANY SUPPLEMENTAL TILE BACK-UP SHEET FOR INSTALLATION.
(M)	MOSAIC TILE (LEFT)	IMAGINE TILE	D.A.I.	G.C.	4 1/4" X 4 1/4" CERAMIC TILE. VEGETABLE GRAPHIC TILES FRAMED BY 1A (LIGHT CHERRY). SEE TUSCANY SUPPLEMENTAL TILE BACK-UP SHEET FOR INSTALLATION.
(C)	CERAMIC TILE	DAL-TILE	G.C.	G.C.	4 1/4" X 4 1/4" TILE: X735 (ALMOND) MATTE FINISH. 2' X 2' TILE: D137 (CANVAS), D343 (BUTTERS-COTTON), D042 (TERRA ROSATA), D322 (JUNIPER) UNGLAZED FINISH. SEE TUSCANY SUPPLEMENTAL TILE BACK-UP SHEET FOR INSTALLATION DETAILS.
(C)	CERAMIC TILE	IMAGINE TILE	G.C.	G.C.	4 1/4" X 4 1/4" CERAMIC TILE. COLOR: 1A1 (GREEN MAPLE). SEE TUSCANY SUPPLEMENTAL TILE BACK-UP SHEET FOR INSTALLATION.

NOTE: ALL WOOD INTERIOR DOORS & CHAIR RAIL MOLDING TO BE STAINED (MINWAX #235 CHERRY) AND POLYURETHANED (MINWAX FAST DRYING CLEAR SATIN).

NOTE: PREFINISHED AND PREFRAMED COUNTER ENTRANCE IS AVAILABLE THROUGH MARLITE OR GLUE 2 PIECES OF 5/8" PARTICLE BOARD TOGETHER. SEE BACK-UP SHEET #1 FOR FINISH OPTIONS.

NOTE: F.R.P. SHOULD BE TO CEILING HEIGHT IN BACKROOM, BUT MUST BE A MINIMUM OF 8'-0" ABOVE FINISHED FLOOR. F.R.P. IN NON-PUBLICLY ACCESSIBLE RESTROOMS MUST BE FLOOR TO CEILING.

### CEILING & LIGHTING LEGEND

2' X 2' DROP CEILING WITH WHITE SPLINES (BRASS TONE OPTIONAL).

SYMBOL	DESCRIPTION	MANUF.	SUPPLY	ORDERED FROM	NO.	NOTES:
(X)	2'X2' RECESSED FLUORESCENT FIXTURE	LIGHTOLIER	SPECIALTY STORE LIGHTING	DAI	9	RECESSED FLUORESCENT FIXTURE (SPS20SVA2FT120SB). USES (2) PL-L40W/35/RS BIA X 2G11 LIGHT BULBS.
(X)	2'X2' RECESSED FLUORESCENT FIXTURE W/PARABOLIC LENS	LIGHTOLIER	SPECIALTY STORE LIGHTING	DAI	7	RECESSED FLUORESCENT FIXTURE W/PARABOLIC LENS (DPA2G9LS2FT120SB). USES (2) PL-L40W/35/RS BIA X 2G11 LIGHT BULBS.
(A)	WALL ART TRACK LIGHTING (TRIPLE FIXTURE)	LIGHTOLIER	SPECIALTY STORE LIGHTING	DAI	1	(3) PAR-FLEX ADJUSTABLE FIXTURE (9201WH). 50 WATT HALOGEN LAMP (50PAR20/HAL/NFL30) (2) SECTIONS 48" TRACK. PLACEMENT SHOWN ON PLAN IS APPROXIMATE. REFER TO MFR. INSTRUCTIONS FOR EXACT MOUNTING PLACEMENT.
(A)	WALL ART TRACK LIGHTING (DOUBLE FIXTURE)	LIGHTOLIER	SPECIALTY STORE LIGHTING	DAI	1	(4) PAR-FLEX ADJUSTABLE FIXTURE (9201WH). 50 WATT HALOGEN LAMP (50PAR20/HAL/NFL30) (2) SECTIONS 48" TRACK. PLACEMENT SHOWN ON PLAN IS APPROXIMATE. REFER TO MFR. INSTRUCTIONS FOR EXACT MOUNTING PLACEMENT.
(D)	VINYL DROP-IN		G.C.	G.C.	AS REQD.	2' X 2' DROP-IN PANEL
(D)	ACOUSTICAL DROP-IN		G.C.	G.C.	AS REQD.	2' X 2' DROP-IN PANEL
(X)	2' X 4' SURFACE MOUNTED LIGHT FIXTURE WITH SEPARATE EXHAUST FAN		G.C.	G.C.	1	STANDARD SURFACE MOUNTED FIXTURE WITH ENERGY SAVING BALLAST AND 40 WATT COOL WHITE TUBES. SEPERATE EXHAUST FAN WITH A 100 CFM AIR EXCHANGE REQUIRED.
(X)	PENDANT LIGHT	FORECAST	SPECIALTY STORE LIGHTING	DAI	8	ADJUSTABLE PENDANT LIGHT FIXTURE (F5122) WITH SEPERATE HOLDER (F5110-65). USE 25W/RP FROSTED BULB. WHEN USING BOOTH SEATING A PENDANT LIGHT IS REQUIRED, CENTERED OVER THE TABLE TOP. WHEN INSTALLING PENDANT LIGHTS, IN ANY APPLICATION, THEY SHOULD BE INSTALLED AT A HEIGHT OF 6'-6" (198.1cm) FROM THE FLOOR TO THE BOTTOM OF THE FIXTURE. (A PENDANT STEM KIT IS AVAILABLE THROUGH SPECIALTY STORE LIGHTING FOR USE WITH HIGH CEILING) *RECOMMEND INSTALLING CUSTOMER SEATING BEFORE PENDANT LIGHTS TO ALLOW FOR PRECISE PLACEMENT OF FIXTURES OVER TABLE TOPS.
(F)	CEILING FAN	VILA LIGHTING	DAI	DAI	3	MX2-AS/52CR REGENCY MX-EXCEL WITH 5 CHERRY FINISH BLADES. CAN BE INSTALLED AS DROP STYLE (WITH 6" OR 2" STEM) OR HUGGER (FLUSH) STYLE.

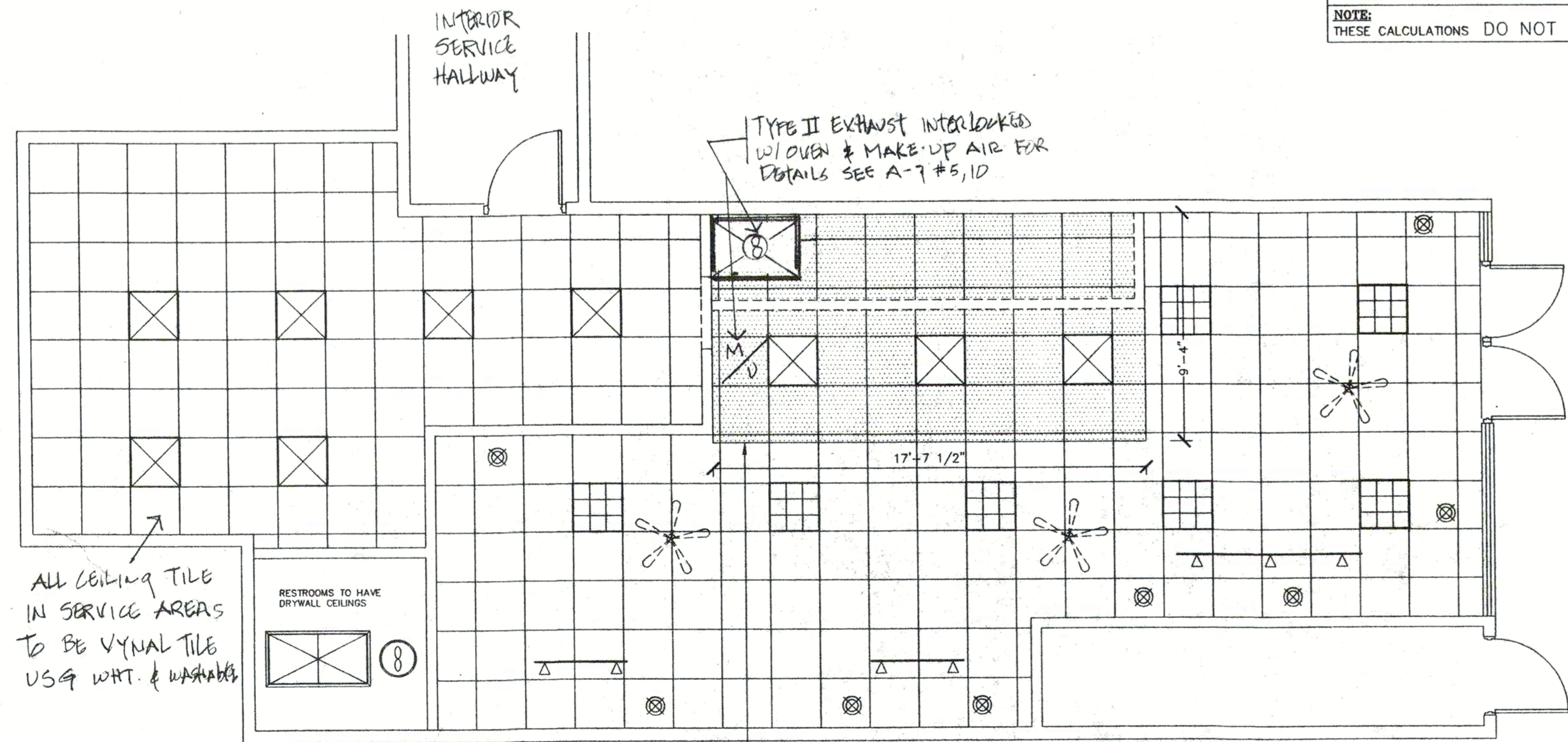
### TUSCANY DECOR CALCULATIONS

NOTE: THE SUBWAY STORE DESIGN DEPARTMENT WILL NOT ACCEPT RESPONSIBILITY FOR ANY INACCURACIES. THE CALCULATIONS PROVIDED BELOW MUST BE VERIFIED BY THE G.C. AND FRANCHISE OWNER BEFORE ANY ORDER FOR THESE MATERIALS IS ACCEPTED AND PLACED.

QUANTITIES	CALCULATION WORKSHEET
<b>CUSTOMER AREA</b>	
1) (30) YARDS CITYSCAPE MURAL	1) W/TS + S/M + 10% DIVIDED BY 3.
2) (30) YARDS OF TUSCAN STUCCO WALL COVERING	2) W/TS + T/S + 10% DIVIDED BY 3
3) (91) FEET OF UPPER DECORATIVE MOLDING	3) W/TS + S/M + 10%
4) (91) FEET OF LOWER CHAIR RAIL MOLDING	4) W/TS + T/S + 10%
5) (18) YARDS OF QUENTIN WALLCOVERING (OR OPTIONAL RUSTIC BRICK WALLCOVERING) ABOVE CITYSCAPE MURAL	5) (CEILING HEIGHT - 7'-6") X (M/TS + S/M + (Q/WC OR B/T IN CUSTOMER AREA ONLY)) + 5% DIVIDED BY 12
6) (N/A) (OPTIONAL) FEET OF HARDWOOD CROWN MOLDING (AT CORNER WHERE WALL AND CEILING MEET)	6) M/TS + S/M (+ W/TS IF WINDOWS NOT TO CEILING) + 10%
7) (N/A) FEET OF HARDWOOD CROWN MOLDING (FINISH CAP ON STRIP LIGHTING SHELF)	7) TOTAL LENGTH OF WALLS WHERE FLUORESCENT STRIP LIGHTING TO BE INSTALLED + 10%
<b>SERVICE AREA</b>	
8) (N/A) 4' X 12' SHEETS IRISH MAPLE LAMINATE *	8) G/L (ONLY ON 36" & 48" HIGH WALLS) + 5% DIVIDED BY 12
9) (N/A) 12' T-MOLDING STRIPS	9) (G/L ON 36" HIGH WALLS X 2) + (G/L ON 48" HIGH WALLS X 3) + 5% DIVIDED BY 12
10) (N/A) YARDS OF BRICK TEXTURED WALL COVERING	10) CEILING HEIGHT X B/T + 5% DIVIDED BY 12
11) (1) RIGHT (1) LEFT VEGETABLE MOSAIC TILE	
12) (N/A) (OPTIONAL) FEET OF COPPER CORNICHE TRIM	12) TOTAL LENGTH OF CUSTOMER SIDE OF HEADERWALL(S) OVER SERVICE AREA + 5%
<b>BACKROOM</b>	
13) (18) MARLITE F.R.P. WHITE (ALMOND OPTIONAL IF PERMITTED BY HEALTH/BUILDING CODE)	13) W/R + 5% DIVIDED BY 4
14) (17) PVC DIVISION MOLDING	14) PANEL COUNT FROM #13 LESS 1
15) (5) PVC INSIDE CORNER	15) COUNT ALL INSIDE CORNERS WHERE W/R MEET
16) (6) PVC OUTSIDE CORNER	16) COUNT ALL OUTSIDE CORNERS WHERE W/R MEET
17) (6) PVC CAP MOLDING	17) COUNT ALL EDGES WHERE W/R BEGINS & ENDS & DOORWAYS.
<b>PUBLIC ACCESS RESTROOMS</b>	
18) (6) MARLITE F.R.P. ALMOND	18) A/FRP + 5% DIVIDED BY 4
19) (5) PVC DIVISION MOLDING	19) PANEL COUNT FROM #18 LESS 1
20) (4) PVC INSIDE CORNER	20) COUNT ALL INSIDE CORNERS WHERE A/FRP MEET
21) (N/A) PVC OUTSIDE CORNER	21) COUNT ALL OUTSIDE CORNERS WHERE A/FRP MEET
22) (2) PVC CAP MOLDING	22) COUNT ALL EDGES WHERE A/FRP BEGINS & ENDS & DOORWAYS.
23) (N/A) YARDS OF TUSCAN STUCCO IN RESTROOM(S)	23) HEIGHT FROM TOP OF WALL TILE TO CEILING (48"-52" A.F.F.) X RR/2 + 5% DIVIDED BY 8.

\* CALCULATIONS ARE FOR IRISH MAPLE LAMINATE AND ALUMINUM T-MOLDING APPLIED TO 36" AND 48" HIGH WALLS. LAMINATE AND T-MOLDING, WHEN AFFIXED DIRECTLY TO DUKE FRONT COUNTER, IS SHIPPED READY TO INSTALL BY DUKE MANUFACTURING.

NOTE: THESE CALCULATIONS DO NOT INCLUDE THE MATERIALS NEEDED TO DECOR THE AREA ABOVE OR BELOW THE WINDOWS.



### GENERAL NOTES:

- CEILING HEIGHT IS 10'
- ELECTRICAL OUTLET HEIGHTS MEASURED TO BOTTOM OF BOX.
- ONE ELECTRICAL JUNCTION BOX TO BE LOCATED IN CEILING ABOVE EACH WINDOW.
- CUNO MODEL SW3-EL-1H WATER FILTRATION SYSTEM IS REQUIRED IN ALL NEW STORES THAT DISPENSE BEVERAGES (IN CANADA THE ECOLAB FRESH H2O REMAINS OPTIONAL). THE RECOMMENDED PLACEMENT FOR INSTALLATION IS REMOTE MOUNTING ONTO THE BACKROOM BEVERAGE SYRUP RACK OR MOUNTING ONTO BACKROOM WALL. OPTIONAL INSTALLATION MOUNTING INSIDE THE FRONT BEVERAGE COUNTER WHERE SPACE LIMITATIONS OCCUR. IN AREAS WHERE CHLORAMINE IS IN USE BY THE LOCAL MUNICIPALITY THE CUNO MODEL CFSRCR CANISTER IS REQUIRED TO BE INSTALLED IN ADDITION TO THE STANDARD SW3-EL-1H SYSTEM. REQUIRED: 1/2" INCOMING WATER LINE FEED WITH 1/2" BALL VALVE SHUTOFF AND 1/2" FPT CONNECTION. MINIMUM 110 VOLT, 20 AMP ELECTRICAL SERVICE TO SUPPORT THE CARBONATOR AND WATER BOOSTER (MUST BE DEDICATED CIRCUIT).
- EXIT LIGHTS INSTALLED BY G.C. PER LOCAL CODE.
- EMERGENCY LIGHTS INSTALLED BY G.C. PER LOCAL CODE.
- EXTINGUISHERS, SMOKE AND FIRE DETECTION SYSTEMS INSTALLED BY G.C. PER LOCAL CODE.
- LABOR & MATERIAL SUPPLIED BY G.C. UNLESS OTHERWISE NOTED.
- ALL DIMENSIONS TO BE VERIFIED BY G.C. ON SITE.
- DECOR SPECIFICATIONS ARE TO BE SUBWAY'S "TUSCANY" SCHEME.

### NOTE:

THIS DRAWING IS FURNISHED BY DOCTORS ASSOCIATES INC. ("DAI") D/B/A SUBWAY. RECIPIENT MUST DETERMINE IF THIS DRAWING MUST BE SUBMITTED TO A LICENSED ARCHITECT OR SIMILAR PROFESSIONAL UNDER FEDERAL, STATE OR LOCAL LAW. ANY CHANGES MUST BE APPROVED BY DAI.

DO NOT SCALE DRAWING. WRITTEN DIMENSIONS TAKE PRECEDENCE OVER SCALED DIMENSIONS, AND SHALL BE VERIFIED IN THE FIELD BY THE GENERAL CONTRACTOR AND/OR FRANCHISEE/OWNER. ANY DISCREPANCY IN DIMENSIONS SHALL BE BROUGHT TO THE IMMEDIATE ATTENTION OF DAI'S AREA DEVELOPMENT AGENT OR DESIGNATED FIELD REPRESENTATIVE.

THE GENERAL CONTRACTOR AND EACH SUB-CONTRACTOR SHALL MAKE HIS OWN INSPECTIONS AND MEASUREMENTS. DAI AND SUBWAY SHALL NOT BE HELD RESPONSIBLE FOR THE ACCURACY OF DIMENSIONS AND FOR ERRORS AND OMISSIONS IN THE DRAWINGS IF WRITTEN CONFIRMATION HAD NOT BEEN RECEIVED BY DAI'S STORE DESIGN DEPARTMENT.

THIS DRAWING AND THE INFORMATIONAL CONTENT HEREOF IS THE CONFIDENTIAL PROPERTY OF SUBWAY AND DAI AND IS PROVIDED SOLELY FOR THE USE OF AUTHORIZED FRANCHISEES, THEIR AGENTS AND CONTRACTORS. RECIPIENT AGREES NOT TO REPRODUCE, COPY, USE OR TRANSMIT THIS DRAWING AND/OR ITS INFORMATIONAL CONTENT, IN WHOLE OR IN PART, OR ALLOW SUCH ACTION BY OTHERS FOR ANY PURPOSE, EXCEPT WITH THE WRITTEN PERMISSION OF DAI ACTING FOR SUBWAY. RECIPIENT FURTHER AGREES TO SURRENDER THIS DRAWING AND ANY PERMITTED COPIES HEREOF UPON DEMAND.

STORE MUST BE CONSTRUCTED AS DESIGNED IN THESE FLOOR PLANS SUBJECT TO FEDERAL, STATE AND LOCAL LAWS. RECIPIENT IS RESPONSIBLE FOR ENSURING COMPLIANCE WITH ALL LAWS. IF MODIFICATIONS ARE NECESSARY, PLEASE CONTACT DAI'S DESIGN DEPARTMENT FOR WRITTEN APPROVAL OF THE REQUIRED CHANGES.

©2005 DOCTORS ASSOCIATES, INC.

**SUBWAY**

WORLD HEADQUARTERS  
325 BIC DRIVE  
MILFORD, CT 06460  
(203) 877-4281  
(800) 888-4848

FRANCHISEE: **HASHEMIAN/KARAMA** STORE # **24437**

DEVELOPMENT AGENT: **RUTH SENDER**

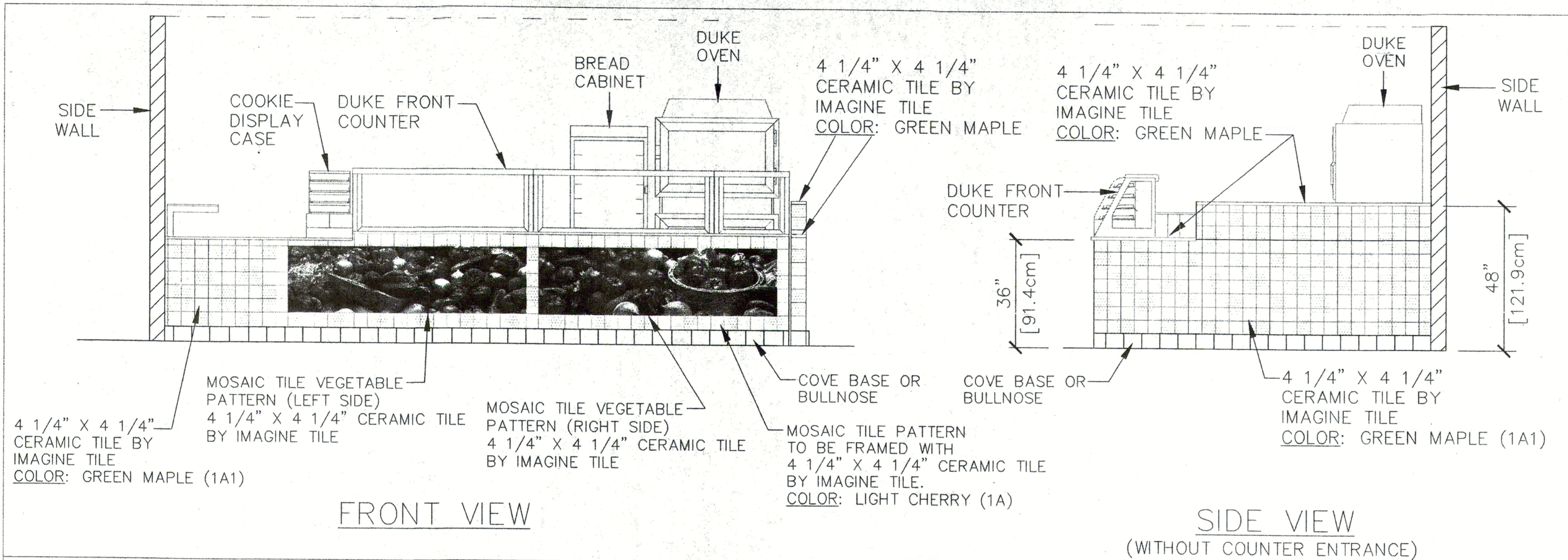
DESIGNED BY: **ANTHONY NAZZARODATE** SEPTEMBER 9, 2005

STORE ADDRESS: **5353 WILSHIRE BLVD.** NO. **A-3**  
**LOS ANGELES, CA.**

DRAWN BY: **AJN** REVISIONS BY DATE

REVIEWED BY:

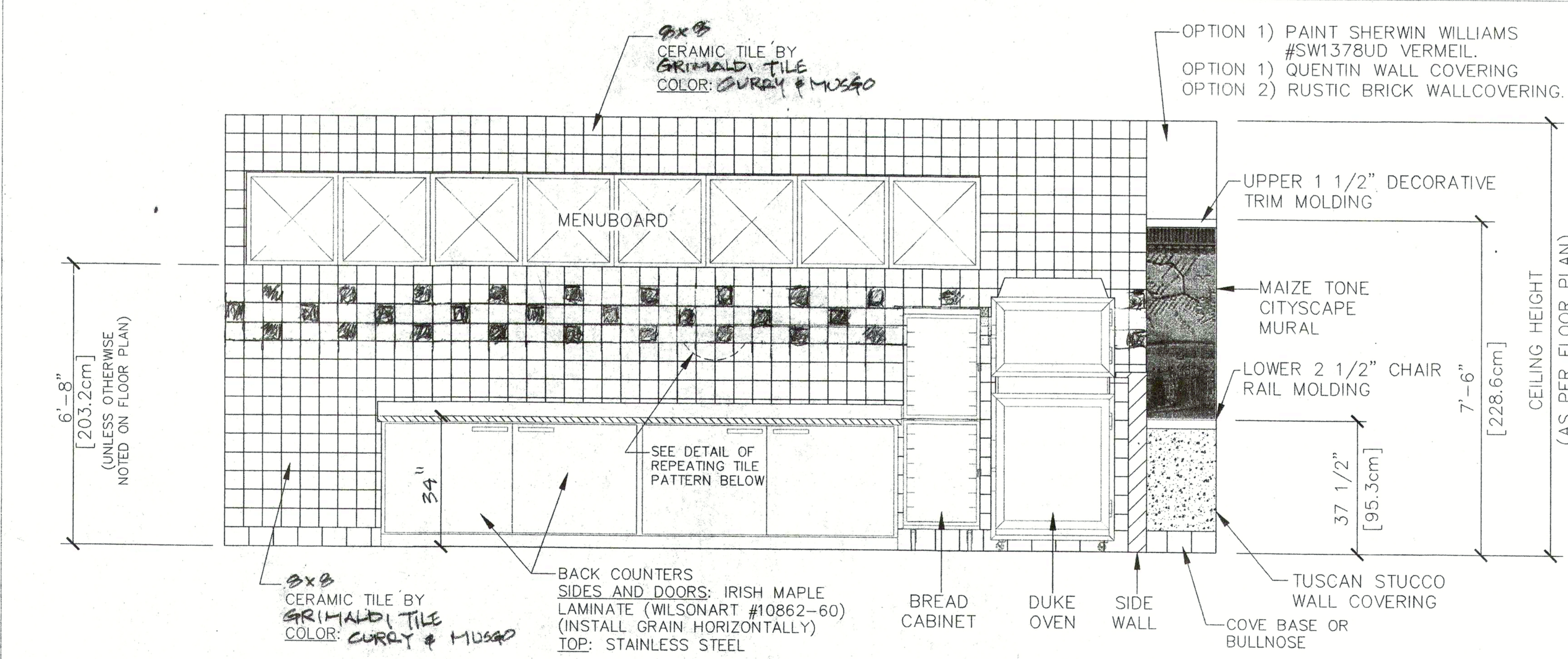
SCALE: 1/4"=1'



FRONT VIEW

SIDE VIEW  
(WITHOUT COUNTER ENTRANCE)

FRONT SERVICE COUNTER ELEVATION (REFER TO GENERAL NOTE 4)



GENERAL NOTES:

- 1) ALL HORIZONTAL DIMENSIONS ARE AS PER FLOOR PLANS UNLESS OTHERWISE NOTED.
- 2) PORCELAIN COVE BASE TO BE USED WHEREVER PORCELAIN FLOOR TILE IS USED.
- 3) STORES WITH CEILING HEIGHTS OF 8'-8" [203.2cm] OR GREATER MAY INSTALL THE MENUBOARD OVER THE OVEN. REFER TO PLANS FOR EXACT PLACEMENT. FOR LOWER CEILING HEIGHTS REFER TO FLOOR PLANS FOR ALTERNATE MENUBOARD PLACEMENT.
- 4) ALTERNATE COUNTER SIZES MAY VARY MOSAIC TILE PATTERN PLACEMENT. PLEASE REFER TO DRAWING FOR EXACT PLACEMENT.

NOTE:

THIS DRAWING IS FURNISHED BY DOCTORS ASSOCIATES INC. ("DAI") D/B/A SUBWAY. RECIPIENT MUST DETERMINE IF THIS DRAWING MUST BE SUBMITTED TO A LICENSED ARCHITECT OR SIMILAR PROFESSIONAL UNDER FEDERAL, STATE OR LOCAL LAW. ANY CHANGES MUST BE APPROVED BY DAI.

DO NOT SCALE DRAWING. WRITTEN DIMENSIONS TAKE PRECEDENCE OVER SCALED DIMENSIONS, AND SHALL BE VERIFIED IN THE FIELD BY THE GENERAL CONTRACTOR AND/OR FRANCHISEE/OWNER. ANY DISCREPANCY IN DIMENSIONS SHALL BE BROUGHT TO THE IMMEDIATE ATTENTION OF DAI'S AREA DEVELOPMENT AGENT, DESIGNATED FIELD REPRESENTATIVE OR REGIONAL MANAGER.

THE GENERAL CONTRACTOR AND EACH SUB-CONTRACTOR SHALL MAKE HIS OWN INSPECTIONS AND MEASUREMENTS. DAI AND SUBWAY SHALL NOT BE HELD RESPONSIBLE FOR THE ACCURACY OF DIMENSIONS AND FOR ERRORS AND OMISSIONS IN THE DRAWINGS IF WRITTEN CONFIRMATION HAD NOT BEEN RECEIVED BY DAI'S STORE DESIGN DEPARTMENT.

THIS DRAWING AND THE INFORMATIONAL CONTENT HEREOF IS THE CONFIDENTIAL PROPERTY OF SUBWAY AND DAI AND IS PROVIDED SOLELY FOR THE USE OF AUTHORIZED FRANCHISEES, THEIR AGENTS AND CONTRACTORS. RECIPIENT AGREES NOT TO REPRODUCE, COPY, USE OR TRANSMIT THIS DRAWING AND/OR ITS INFORMATIONAL CONTENT, IN WHOLE OR IN PART, OR ALLOW SUCH ACTION BY OTHERS FOR ANY PURPOSE, EXCEPT WITH THE WRITTEN PERMISSION OF DAI ACTING FOR SUBWAY. RECIPIENT FURTHER AGREES TO SURRENDER THIS DRAWING AND ANY PERMITTED COPIES HEREOF UPON DEMAND.

STORE MUST BE CONSTRUCTED AS DESIGNED IN THE ATTACHED FLOOR PLANS. THIS BACK-UP SHEET SHOWS TYPICAL WALL ELEVATIONS AND MAY DIFFER FROM THE ACTUAL FLOOR PLANS. THE PLANS ARE SUBJECT TO FEDERAL, STATE, PROVINCIAL AND/OR LOCAL LAWS. RECIPIENT IS RESPONSIBLE FOR ENSURING COMPLIANCE WITH ALL LAWS. IF MODIFICATIONS ARE NECESSARY, PLEASE CONTACT DAI'S DESIGN DEPARTMENT FOR WRITTEN APPROVAL OF THE REQUIRED CHANGES.

©2002 DOCTORS ASSOCIATES, INC.



WORLD HEADQUARTERS  
325 BIC DRIVE  
MILFORD, CT 06460  
(203) 877-4281  
(800) 888-4848

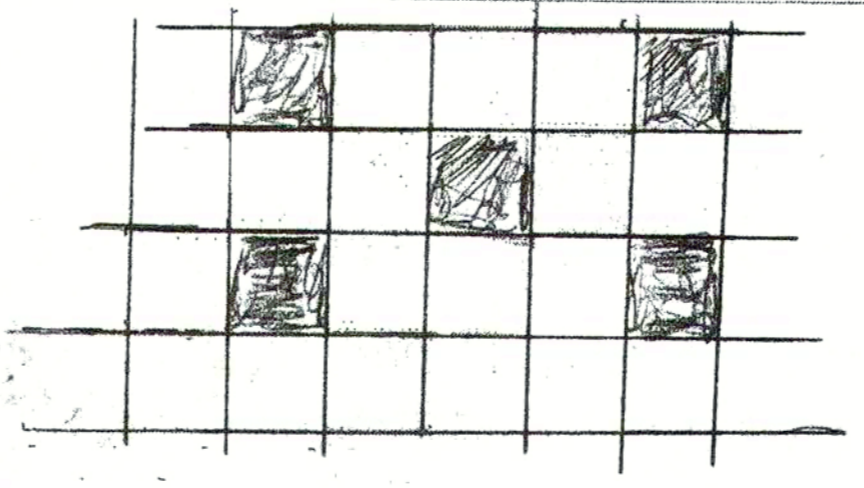
TUSCANY SUPPLEMENTAL ELEVATIONS & TILE A-4

DRAWN BY: DAVID WILKITS		SCALE: NO SCALE		
DATE: JULY 17, 2001				
#	REVISIONS	BY	DATE	APVD
1	UPDATED TILE COLORS AND PATTERN	DW	7/9/02	DW
2	UPDATED TILE COLORS AND PATTERN	DF	11/14/02	DF
3	UPDATED TILE COLORS	DF	1/20/03	DF
4	UPDATED TILE COLORS	DF	4/28/03	DF
5	UPDATED FINISH OPTIONS	DF	8/20/03	DF
6	UPDATED FINISH OPTIONS	DF	12/11/03	DF
7	DAY COVER FRONT COUNTER	DF	3/25/04	DF

CERAMIC TILE KEY

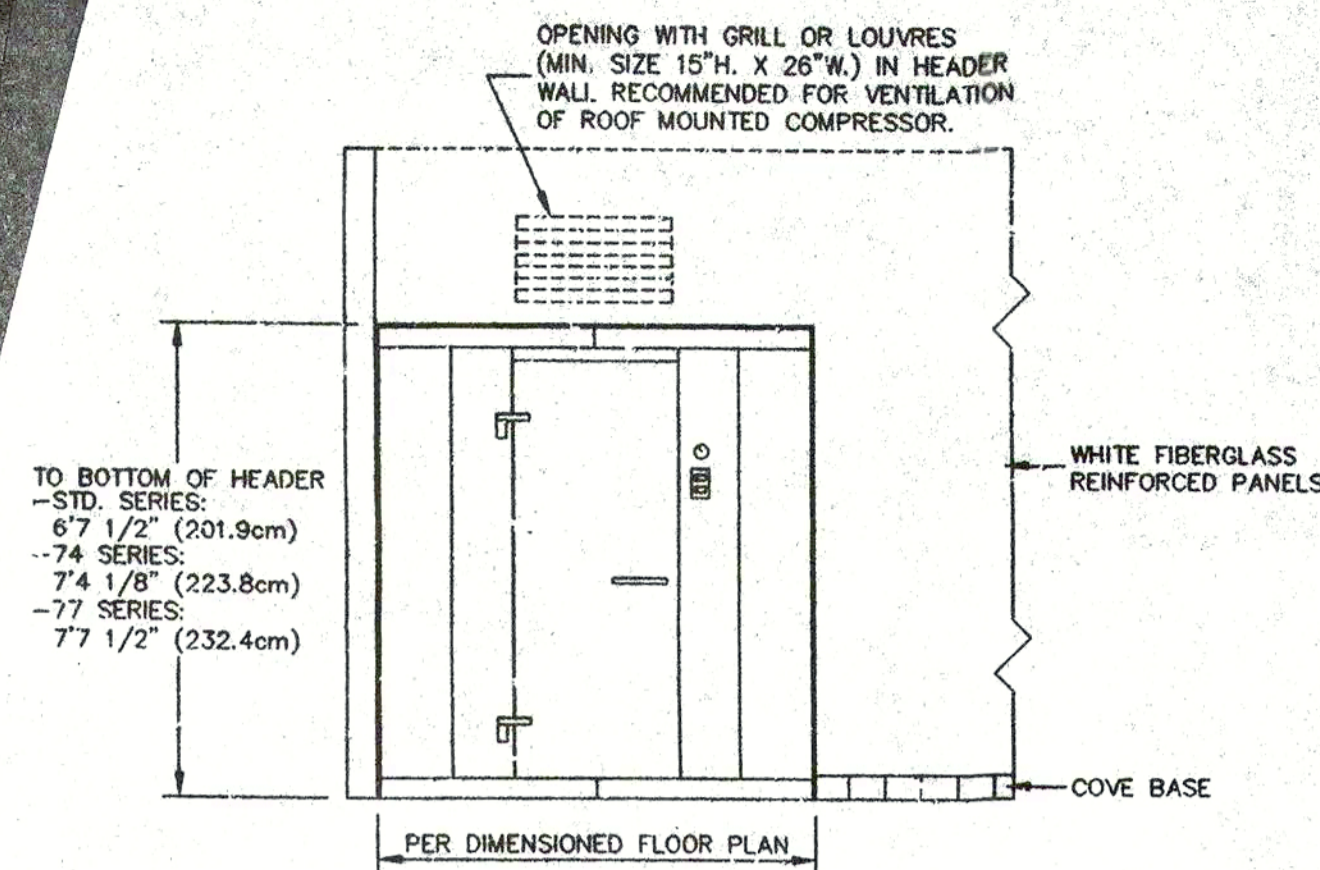
	GRIMALDI CERAMIC COLOR: CURRY
	GRIMALDI CERAMIC COLOR: MUSGO

REPEATING TILE PATTERN DETAIL



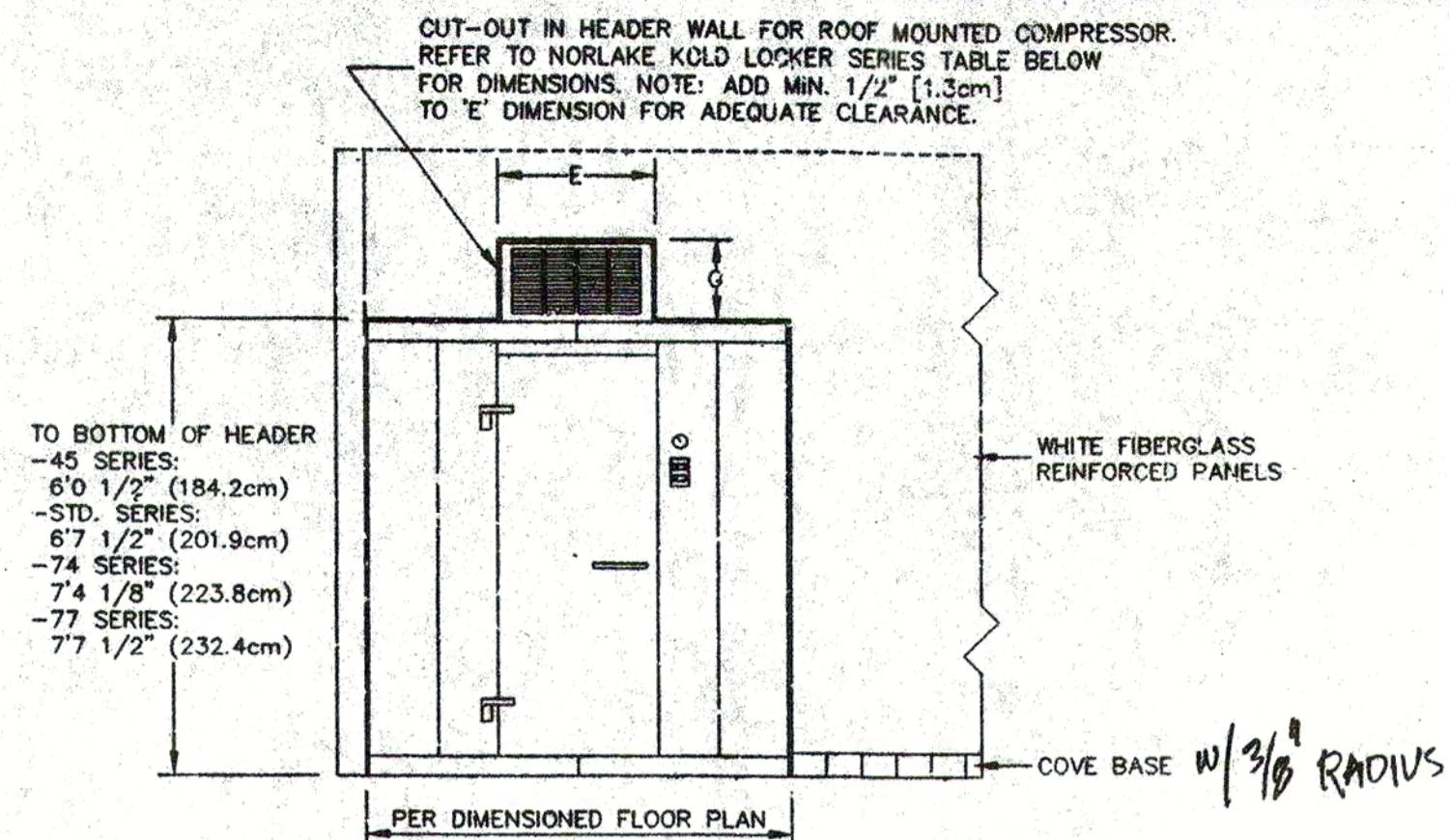
SERVICE AREA ELEVATION

(REFER TO GENERAL NOTES 1, 2 & 3)



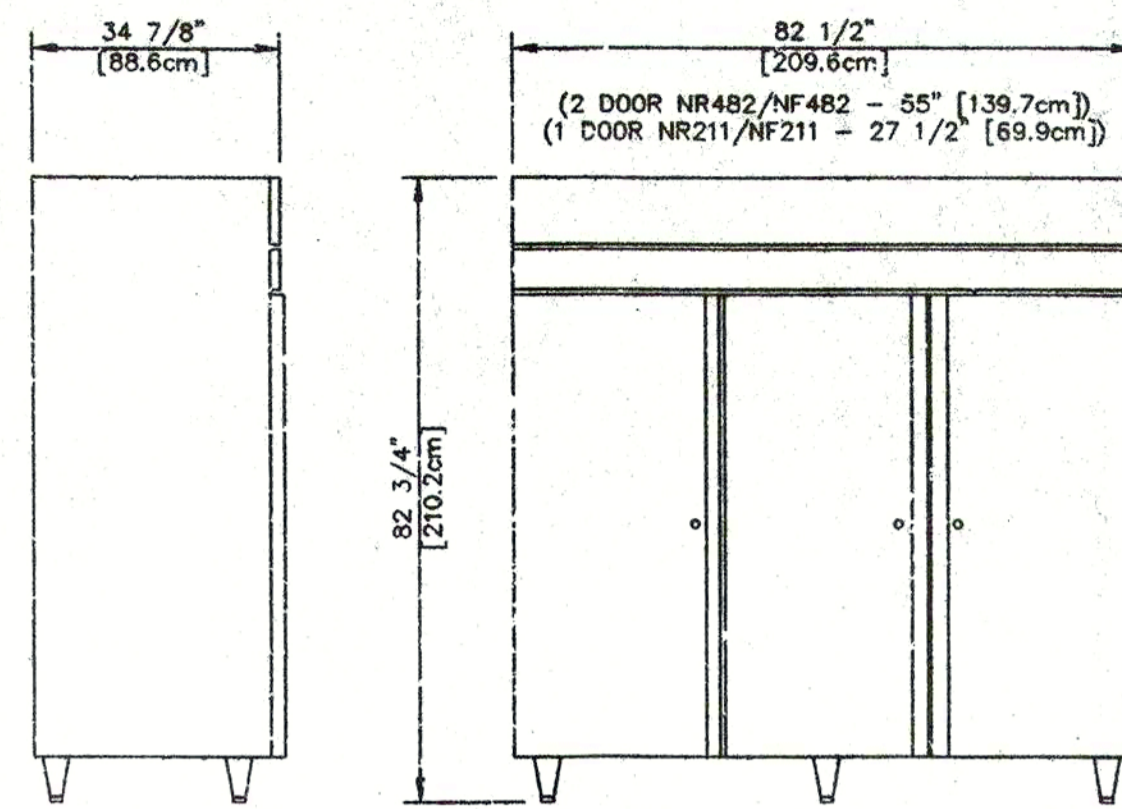
NORLAKE WALK-IN 6' X 6', 6' X 8' OR 8' X 6' REFRIGERATOR OR FREEZER WITH FACE THROUGH WALL TYPICAL ELEVATION DETAIL

THIS DRAWING APPLIES TO MODELS KLB AND KLF 66, 68 AND 683 IN STD, 74 AND 77 SERIES. REFER TO NORLAKE KOLD LOCKER SERIES REFRIGERATOR AND FREEZER DRAWINGS AND TABLE BELOW FOR EXACT DIMENSIONS OF UNITS.



NORLAKE WALK-IN 4' X 5' OR 4' X 6' REFRIGERATOR OR FREEZER WITH FACE THROUGH WALL TYPICAL ELEVATION DETAIL

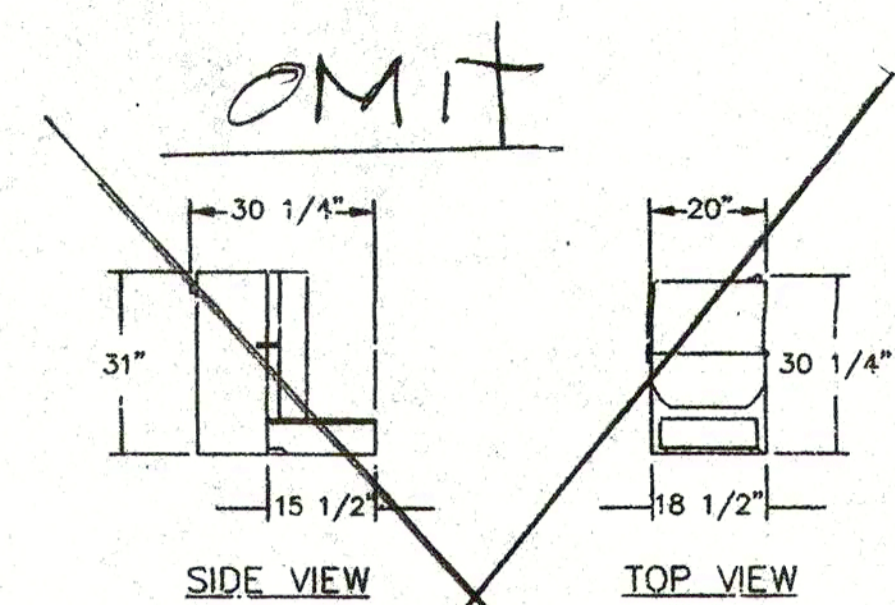
THIS DRAWING APPLIES TO MODELS KLB AND KLF 45 AND 46 IN STD, 74 AND 77 SERIES. REFER TO NORLAKE KOLD LOCKER SERIES REFRIGERATOR AND FREEZER DRAWINGS AND TABLE BELOW FOR EXACT DIMENSIONS OF UNITS.



NORLAKE REFRIGERATOR / FREEZER MODEL NR763SMS/8 OR NF763SMS/8 SHOWN

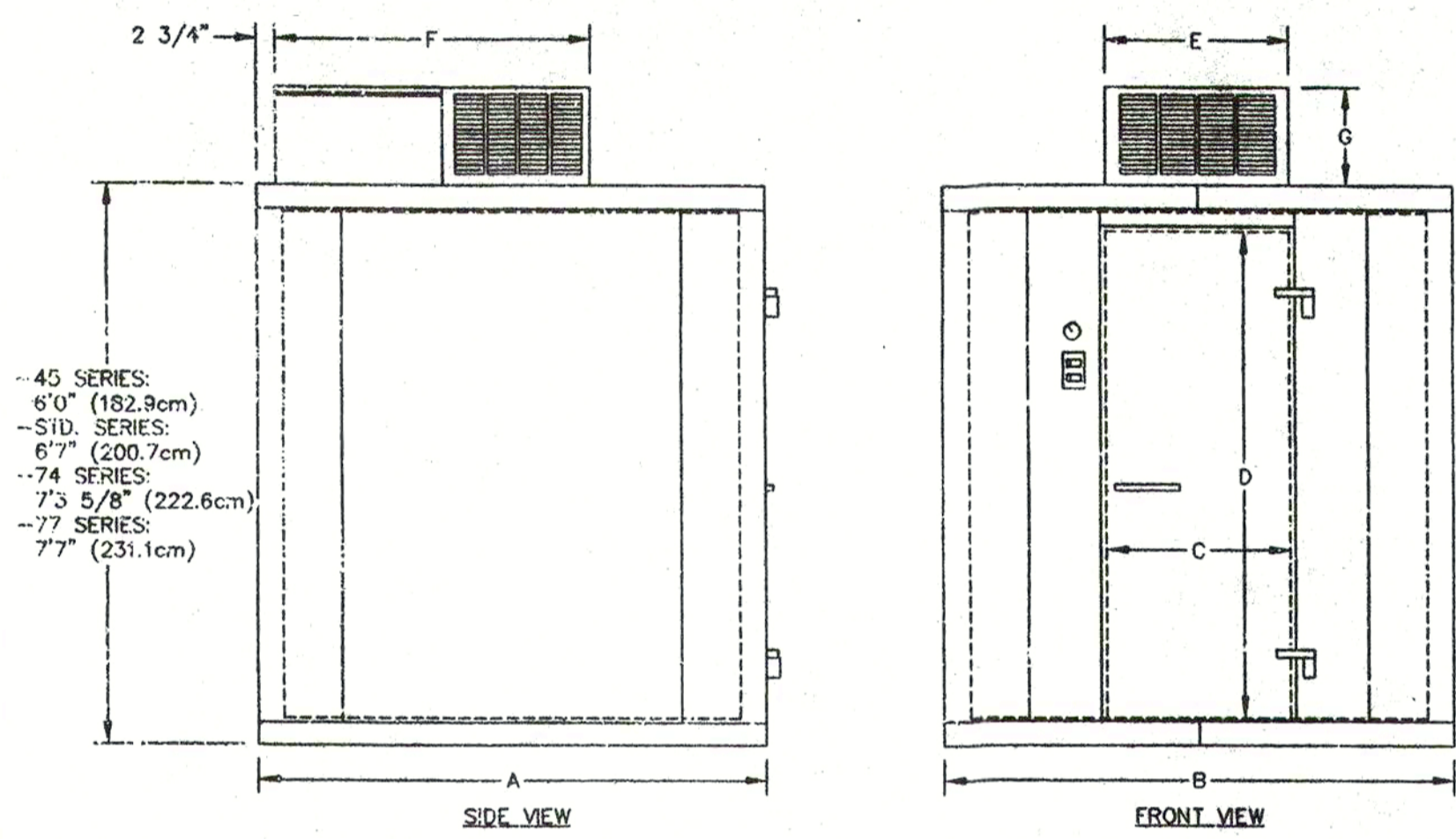
MODEL #	VOLTS/HZ/PH	AMPS.	INTERIOR CU. FT.
NR211SMS/0	115/60/1	10	22.5
NR482SMS/0	115/60/1	12	48.8
NR763SMS/8	208-230/60/1	12	75.0
NF211SMS/0	115/60/1	12	22.5
NF482SMS/0	115/60/1	14	48.8
NF763SMS/8	208-230/60/1	11	75.0

115V SYSTEMS - CORD & PLUG SUPPLIED  
208-230V SYSTEM FIELD WIRED PER LOCAL CODE  
NSF APPROVED  
UL LISTING #SA-3931  
CSA LISTING 18542-23

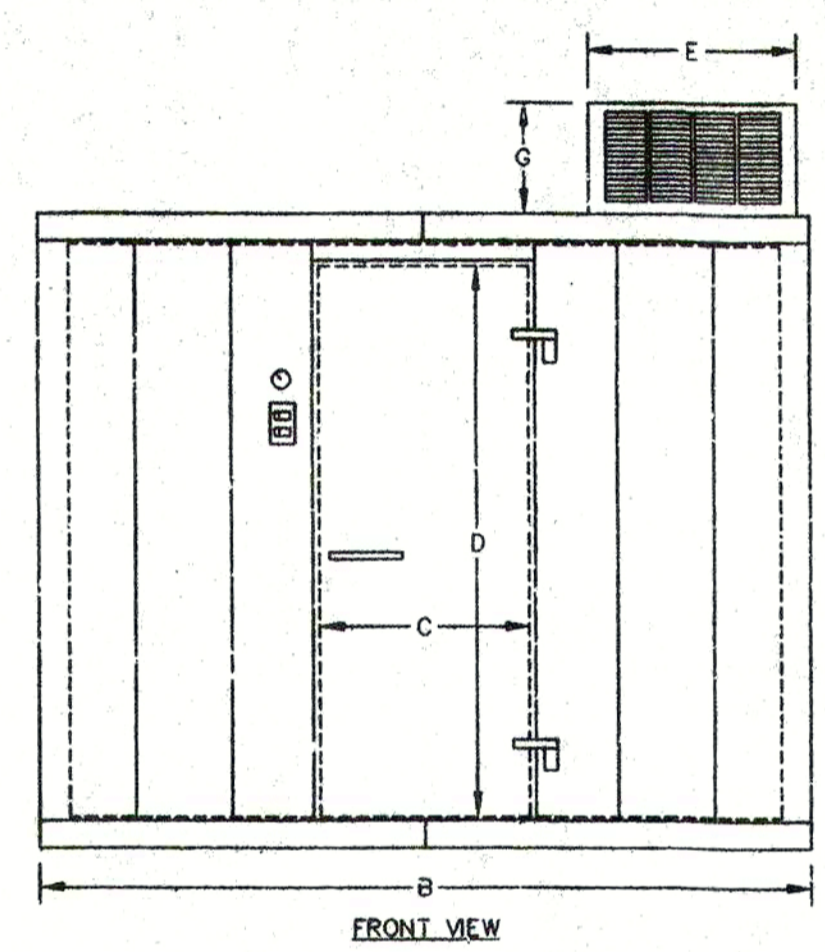


SUBWAY FRUIT/VEGGIE DISPENSING STATION BY NORLAKE

REQUIREMENTS FOR DISHWARE: 40 PS  
ACRYLIC DOOR FOR BLENDER ACCESS  
ALUMINUM REQUIREMENTS: CO2 AT 40 PS  
ELECTRICAL: 115VOLT, 11.5 AMPS, 60 HZ, SINGLE PHASE WITH CORD AND PLUG  
PERFORMANCE: DESIGNED TO DISPENSE CONTROLLED PORTIONS OF STRIP  
CONCENTRATE AND BLEND, AT PREDETERMINED SPEED AND TIME, TO FRUIT/VEGGIE SPECIFICATIONS.  
APPROVED: N.S.F. AND U.L. LISTED  
PATENT PENDING



MODEL KLF66 OR KLF68 SHOWN ABOVE



MODELS KLB683 AND KLF683 (STD, 74 & 77) SHOWN ABOVE

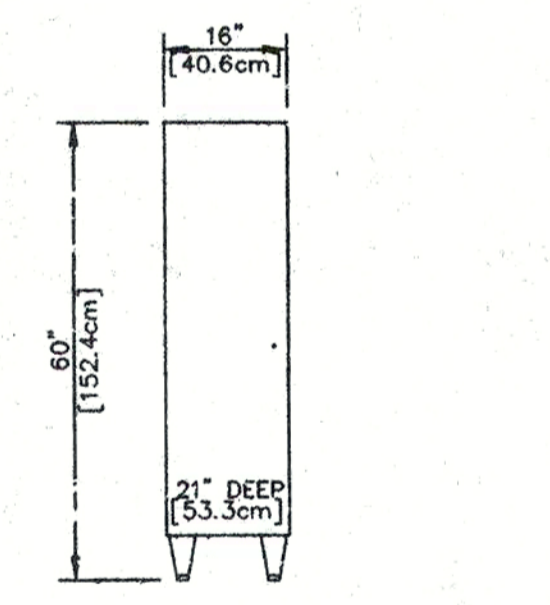
NORLAKE KOLD LOCKER SERIES REFRIGERATOR AND FREEZER

NOTE: KLB = REFRIGERATOR, KLF = FREEZER.

MODEL #	A	B	C	D	E	F	G	INTERIOR CU. FT.	VOLTS/HZ/PH	AMPS.	MAXIMUM FUSE SIZE
KLB 45 CR	4'	5'	26"	53"	26"	44 1/2"	13 1/2"	77	115/60/1	19.4	30
KLB 46 CR	4'	6'	26"	66"	26"	44 1/2"	13 1/2"	105	115/60/1	19.4	30
KLB 56 CR	4'	8'	26"	86"	26"	44 1/2"	13 1/2"	168	115/60/1	19.4	30
KLB 68 CX	4'	8'	26"	86"	26"	44 1/2"	13 1/2"	231	208-230/60/1	10.5	15
KLB 683 CX	4'	8'	26"	86"	26"	44 1/2"	13 1/2"	231	208-230/60/1	10.5	15
KLB 7446 CR	4'	6'	26"	78"	26"	44 1/2"	13 1/2"	123	115/60/1	19.4	30
KLB 7466 CR	4'	8'	26"	86"	26"	44 1/2"	13 1/2"	196	115/60/1	14.2	20
KLB 7486 CR	4'	8'	26"	86"	26"	44 1/2"	13 1/2"	270	208-230/60/1	10.5	15
KLB 74683 CX	4'	8'	26"	86"	26"	44 1/2"	13 1/2"	270	208-230/60/1	10.5	15
KLB 7746 CR	4'	8'	26"	86"	26"	44 1/2"	13 1/2"	123	115/60/1	19.4	30
KLB 7766 CR	4'	8'	26"	86"	26"	44 1/2"	13 1/2"	196	115/60/1	19.4	30
KLB 77683 CX	4'	8'	26"	86"	26"	44 1/2"	13 1/2"	270	208-230/60/1	11.9	15
KLB 77683 CX*	4'	8'	26"	86"	26"	44 1/2"	13 1/2"	270	208-230/60/1	11.9	15
KLF 45 CR	4'	5'	26"	53"	26"	44 1/2"	13 1/2"	77	208-230/60/1	13.4	20
KLF 46 CR	4'	6'	26"	66"	26"	44 1/2"	13 1/2"	105	208-230/60/1	13.4	20
KLF 56 CR*	4'	8'	26"	86"	26"	44 1/2"	13 1/2"	168	208-230/60/1	13.4	15
KLF 68 CX*	4'	8'	26"	86"	26"	44 1/2"	13 1/2"	231	208-230/60/1	11	15
KLF 683 CX	4'	8'	26"	86"	26"	44 1/2"	13 1/2"	231	208-230/60/1	10.8	15
KLF 7746 CR*	4'	8'	26"	86"	26"	44 1/2"	13 1/2"	123	208-230/60/1	13.4	15
KLF 7766 CR	4'	8'	26"	86"	26"	44 1/2"	13 1/2"	196	208-230/60/1	10.8	15
KLF 7768 CX	4'	8'	26"	86"	26"	44 1/2"	13 1/2"	270	208-230/60/1	10.8	15
KLF 77683 CX	4'	8'	26"	86"	26"	44 1/2"	13 1/2"	270	208-230/60/1	10.8	15

NOTE: EACH DOOR SECTION REQUIRES SEPARATE 115/60/1 HOOK UP AND DRAWS 2.3 AMPS.  
\*THESE SYSTEMS HAVE FAN MOTORS THAT REQUIRE SEPARATE 115/60/1 HOOK UP AND DRAW .75 AMPS.  
\*ABOVE SPECIFICATIONS FOR CEILING MOUNT SYSTEMS AND INDOOR USE ONLY.  
WALL MOUNT AND REMOTE COMPRESSORS AVAILABLE. SEE MANUFACTURER FOR DETAILS.  
ALL TO BE DIRECT WIRED.  
NSF APPROVED. UL LISTING #E-486142 (REPORT #48). E.T.L. APPROVED. CSA FILE 18542-24.

L.A. CITY RESEARCH Report # RR 25197



LOCKWOOD RETARDER CABINET MODEL: CA60-RR25

AVAILABLE WITH CASTERS  
ALUMINUM WELDED CONSTRUCTION  
HOLDS 25 HALF SIZE PANS (13" X 18")  
NSF APPROVED

HOSHIZAKI ICE CUBER

KM-500 CUBER ON B-300 BIN  
TYPE: AIR-COOLED, WATER-COOLED, REMOTE.  
ELECTRICAL SPECIFICATIONS  
115/60/1 20 AMP FUSE MIN.  
AIR-COOLED = 13 AMPS, WATER-COOLED = 10 AMPS  
REMOTE = 15 AMPS  
WIRED DIRECT OR PER LOCAL CODE  
PLUMBING SPECIFICATIONS  
1/2" (1.27cm) F.P.T. INLET, 3/4" (1.91cm) F.P.T. DRAIN  
3/4" (1.91cm) F.P.T. BIN DRAIN  
1/2" (1.27cm) F.P.T. WATER CONDENSER INLET (WATER-COOLED UNIT)  
1/2" (1.27cm) F.P.T. WATER CONDENSER OUTLET (WATER-COOLED UNIT)  
NSF/UL APPROVED

HOSHIZAKI ICE CUBER

KML-450 CUBER ON B-500 BIN  
TYPE: AIR-COOLED, WATER-COOLED, REMOTE.  
ELECTRICAL SPECIFICATIONS  
115/60/1 20 AMP FUSE MIN.  
AIR-COOLED = 12.3 AMPS, WATER-COOLED = 11.4 AMPS  
REMOTE = 9.5 AMPS  
WIRED DIRECT OR PER LOCAL CODE  
PLUMBING SPECIFICATIONS  
1/2" (1.27cm) F.P.T. INLET, 3/4" (1.91cm) F.P.T. DRAIN  
3/4" (1.91cm) F.P.T. BIN DRAIN  
1/2" (1.27cm) F.P.T. WATER CONDENSER INLET (WATER-COOLED UNIT)  
1/2" (1.27cm) F.P.T. WATER CONDENSER OUTLET (WATER-COOLED UNIT)  
NSF/UL APPROVED

MANITOWOC ICE CUBER

Q-420 CUBER ON S-420 BIN  
TYPE: AIR-COOLED, WATER-COOLED, REMOTE.  
ELECTRICAL SPECIFICATIONS  
115/60/1 20 AMP FUSE MIN.  
AIR-COOLED = 12.3 AMPS, WATER-COOLED = 11.4 AMPS  
REMOTE = 9.5 AMPS  
WIRED DIRECT OR PER LOCAL CODE  
PLUMBING SPECIFICATIONS  
3/8" (0.95cm) F.P.T. INLET, 1/2" (1.27cm) F.P.T. DRAIN  
3/4" (1.91cm) F.P.T. BIN DRAIN  
3/8" (0.95cm) F.P.T. WATER CONDENSER INLET (WATER-COOLED UNIT)  
1/2" (1.27cm) F.P.T. WATER CONDENSER OUTLET (WATER-COOLED UNIT)  
NSF APPROVED/UL #SA-4027/CSA LISTED

MANITOWOC ICE CUBER

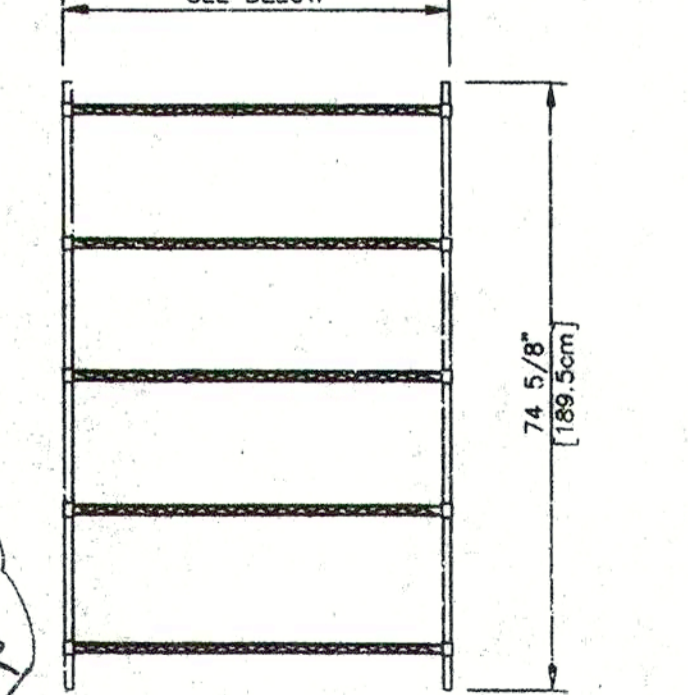
Q-450 CUBER ON S-400 BIN  
TYPE: AIR-COOLED, WATER-COOLED, REMOTE.  
ELECTRICAL SPECIFICATIONS  
115/60/1 20 AMP FUSE MIN.  
AIR-COOLED = 12.8 AMPS, WATER-COOLED = 11.9 AMPS  
REMOTE = 9.5 AMPS  
WIRED DIRECT OR PER LOCAL CODE  
PLUMBING SPECIFICATIONS  
3/8" (0.95cm) F.P.T. INLET, 1/2" (1.27cm) F.P.T. DRAIN  
3/4" (1.91cm) F.P.T. BIN DRAIN  
3/8" (0.95cm) F.P.T. WATER CONDENSER INLET (WATER-COOLED UNIT)  
1/2" (1.27cm) F.P.T. WATER CONDENSER OUTLET (WATER-COOLED UNIT)  
NSF APPROVED/UL #SA-4027/CSA LISTED

LOCKWOOD REACH-IN RETARDER

MODEL: CA27-RR12  
ALUMINUM WELDED CONSTRUCTION  
HOLDS 12 FULL SIZE PANS (18" X 28")  
OR 24 HALF SIZE PANS (13" X 18")  
NSF APPROVED

LOCKWOOD DECK RETARDER

MODEL: CA33-RR12  
ALUMINUM WELDED CONSTRUCTION  
HOLDS 12 FULL SIZE PANS (18" X 28")  
OR 24 HALF SIZE PANS (13" X 18")  
NSF APPROVED

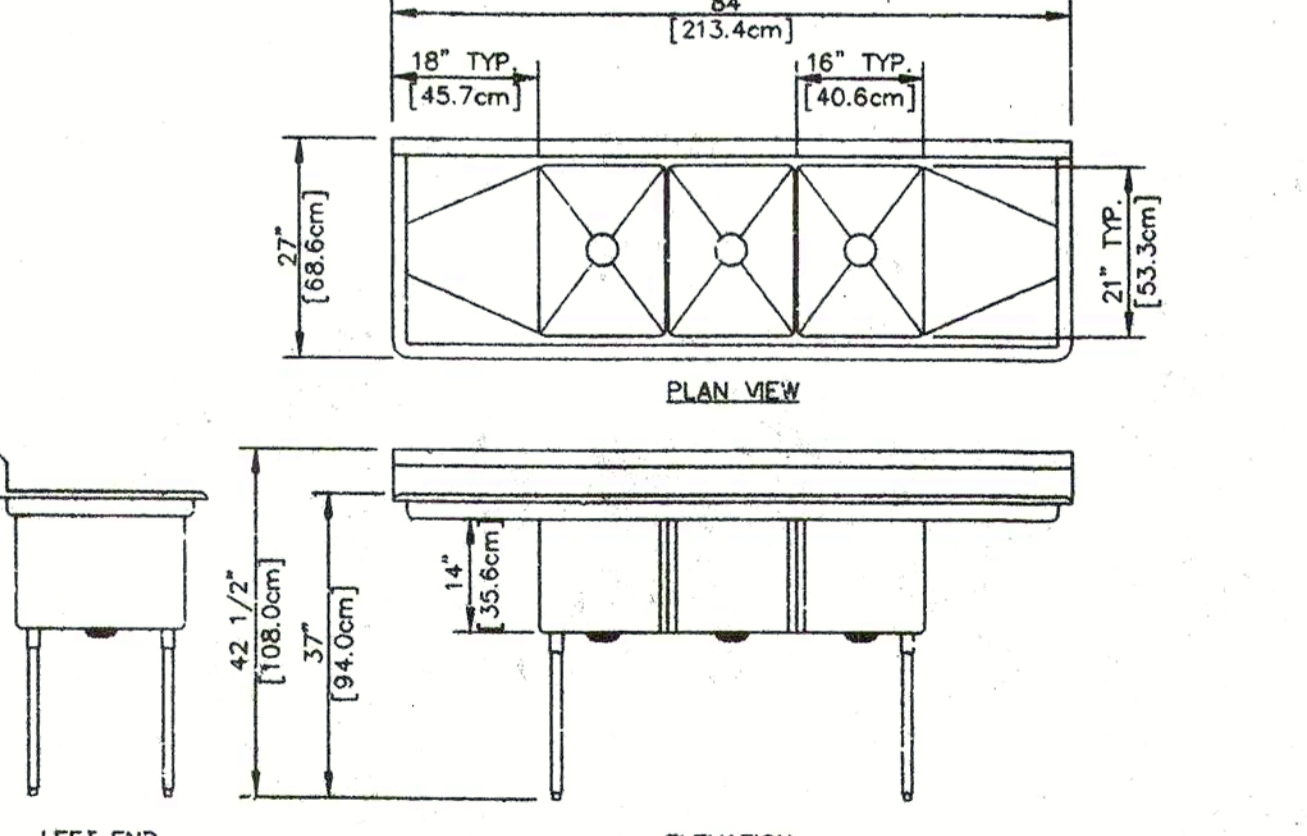


INTERMETRO SHELVING SYSTEMS

AVAILABLE SIZES ARE:  
WIDTH: 14", 18", 21", 24"  
(35.6, 45.7, 53.3, 61cm)  
LENGTH: 24", 30", 36", 42", 48", 60" AND 72"  
(61, 76.2, 91.4, 106.7, 121.9, 152.4, 182.9cm)  
4 OR 5 TIER

DUKE STAINLESS STEEL WORKTABLE

WITH GALVANIZED UNDERSHELF  
TABLES 96" AND LARGER HAVE SIX LEGS  
DRAWERS ARE OPTIONAL  
NSF APPROVED



DUKE MANUFACTURING STAINLESS STEEL SINK

THREE COMPARTMENT SINK WITH TWO 18" DRAINBOARDS SHOWN ABOVE.  
AVAILABLE WITH ONE, TWO, THREE OR FOUR COMPARTMENTS AND ZERO, ONE OR TWO 18" (45.7cm), 24" (61cm) OR 30" (76.2cm) DRAINBOARDS.  
THREE COMPARTMENT CORNER SINKS ALSO AVAILABLE.  
1/2" WATER LINES, 1/2" DRAINS.  
UL AND C-UL LISTED.

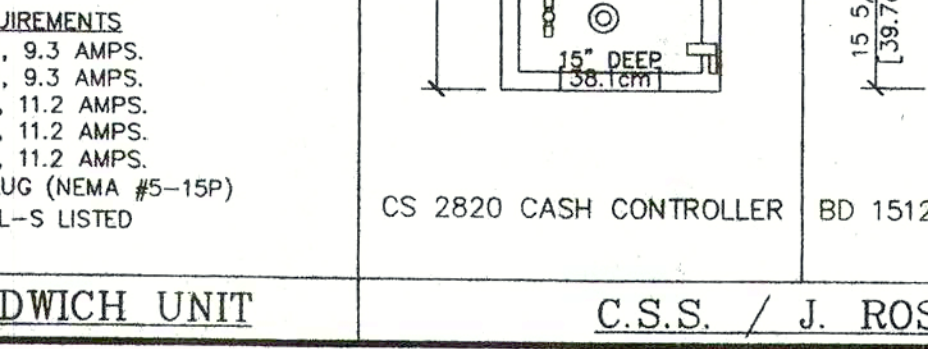
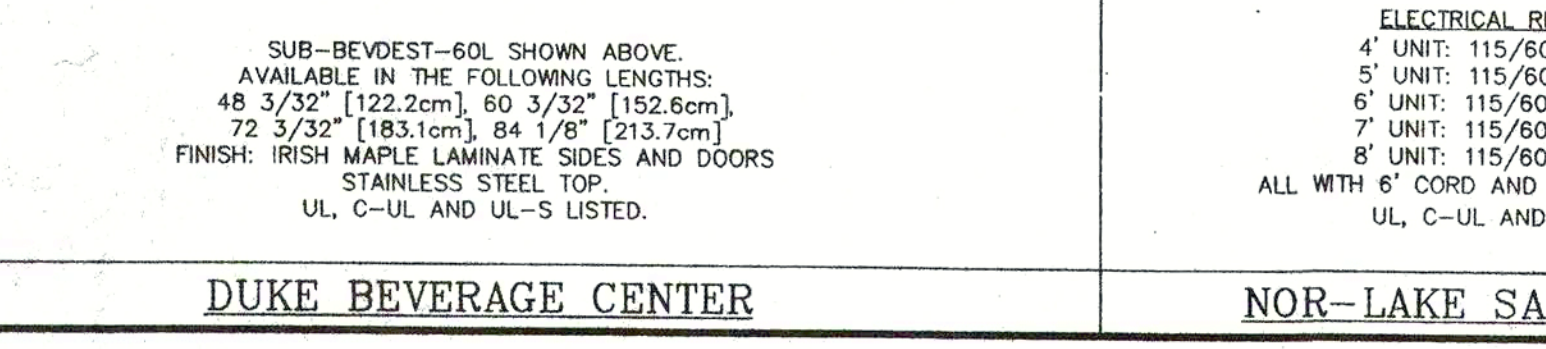
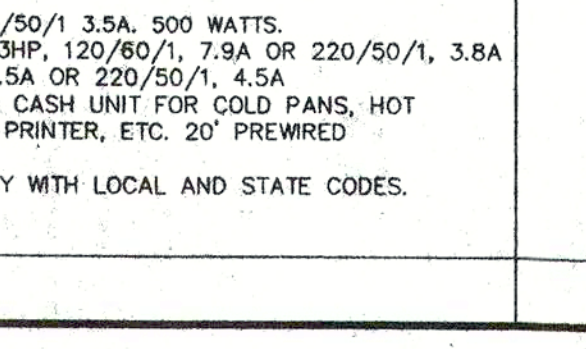
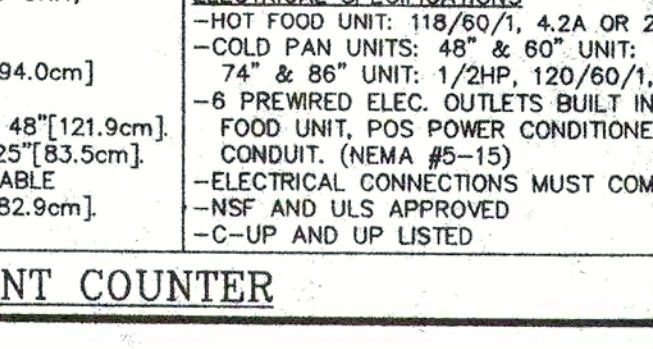
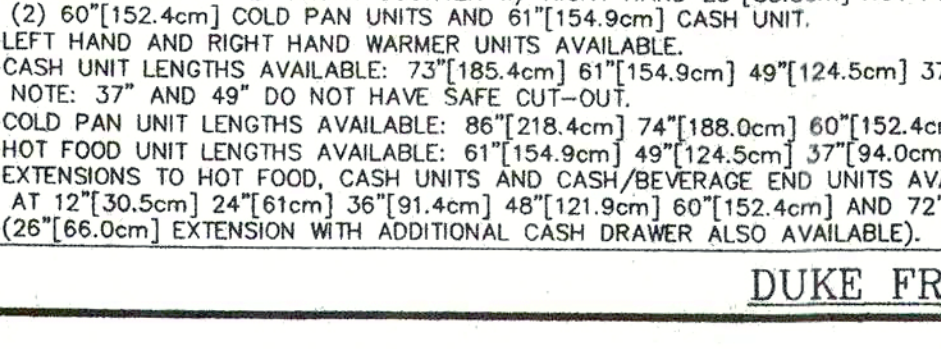
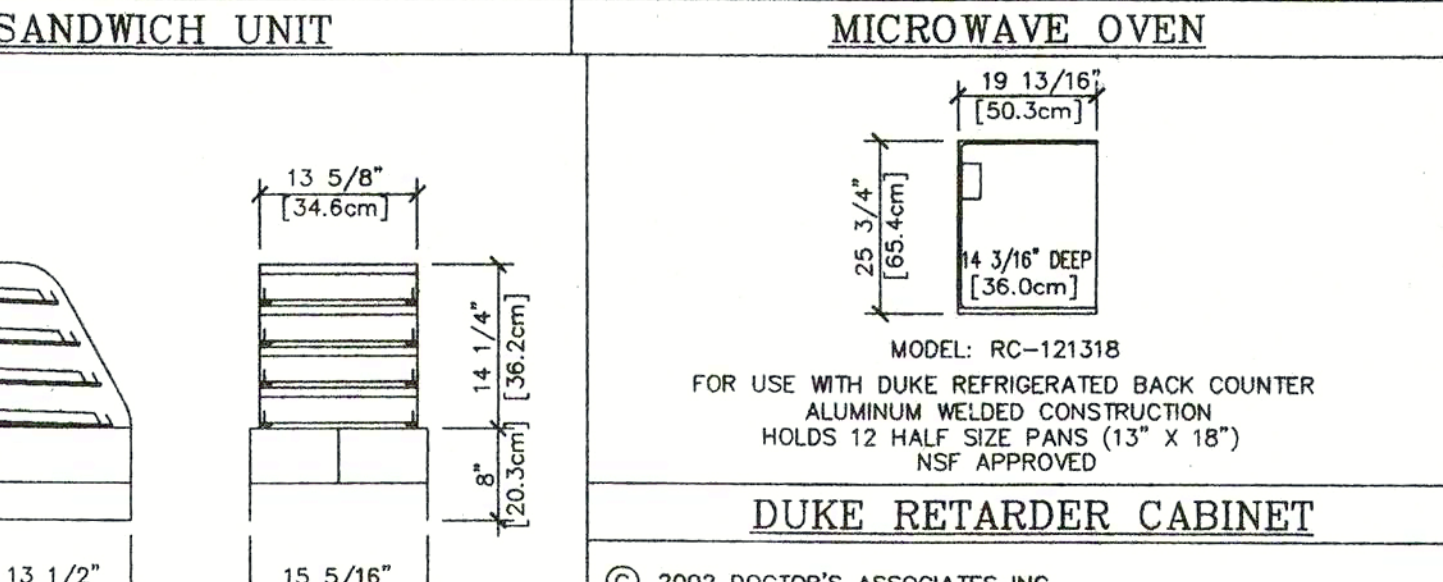
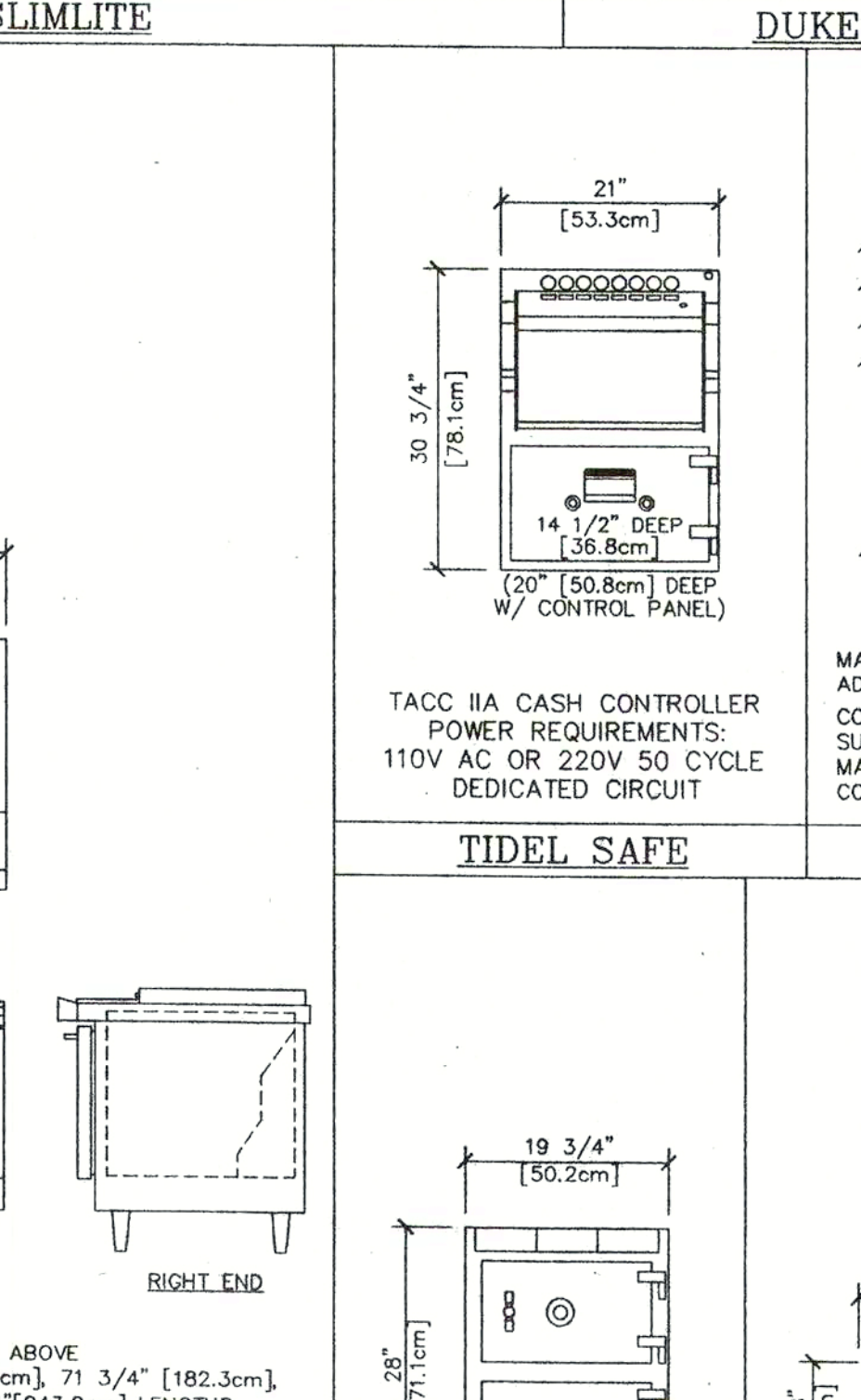
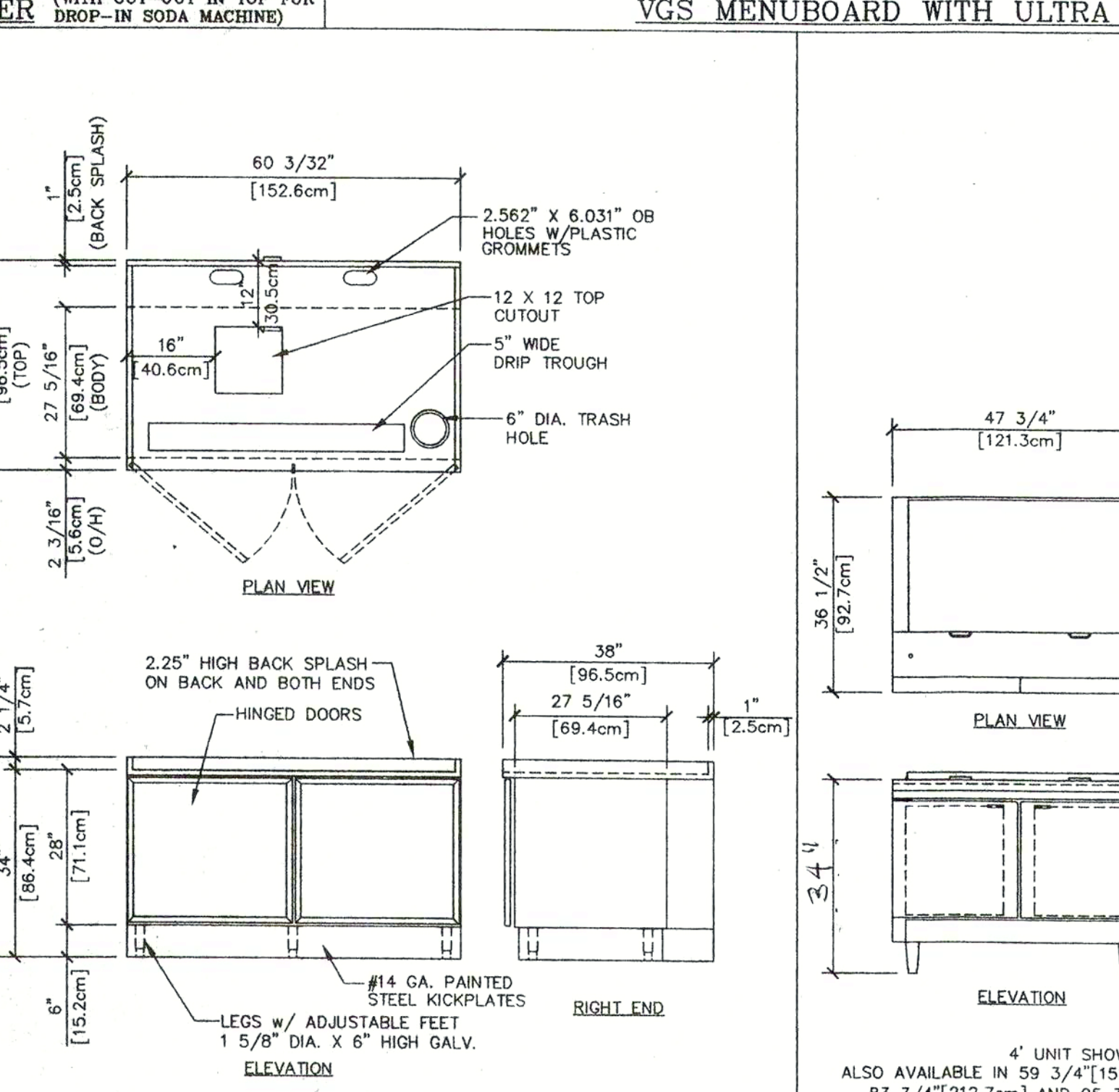
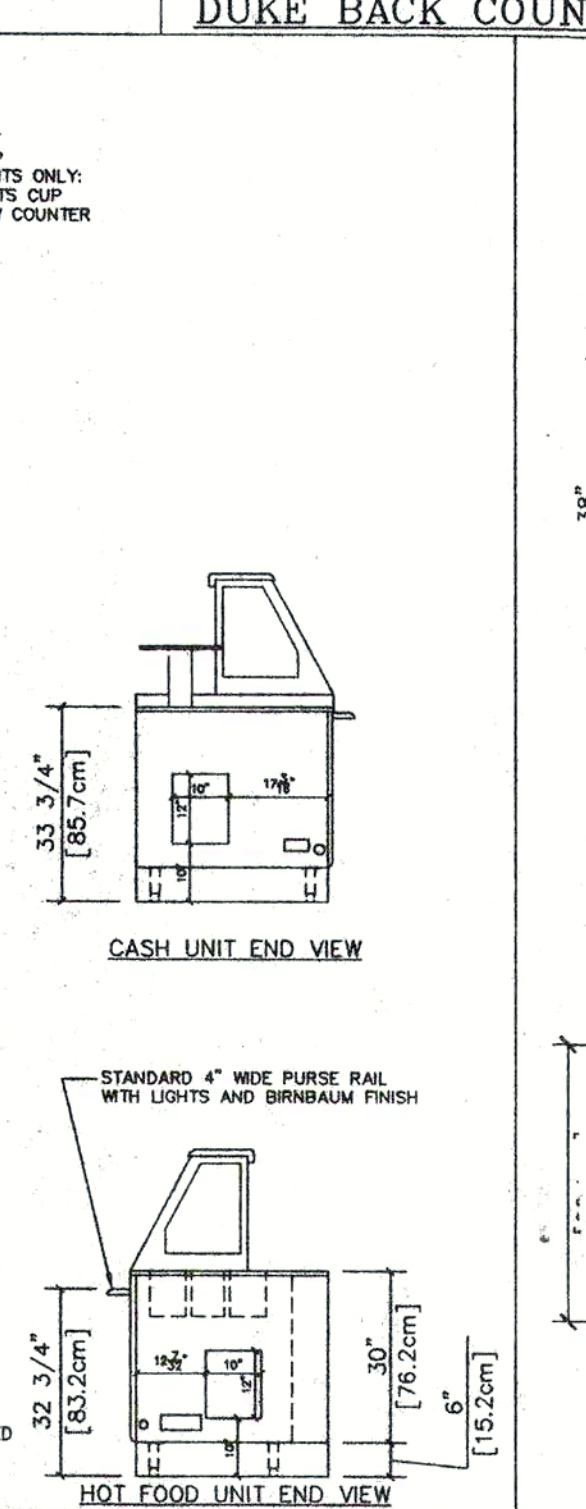
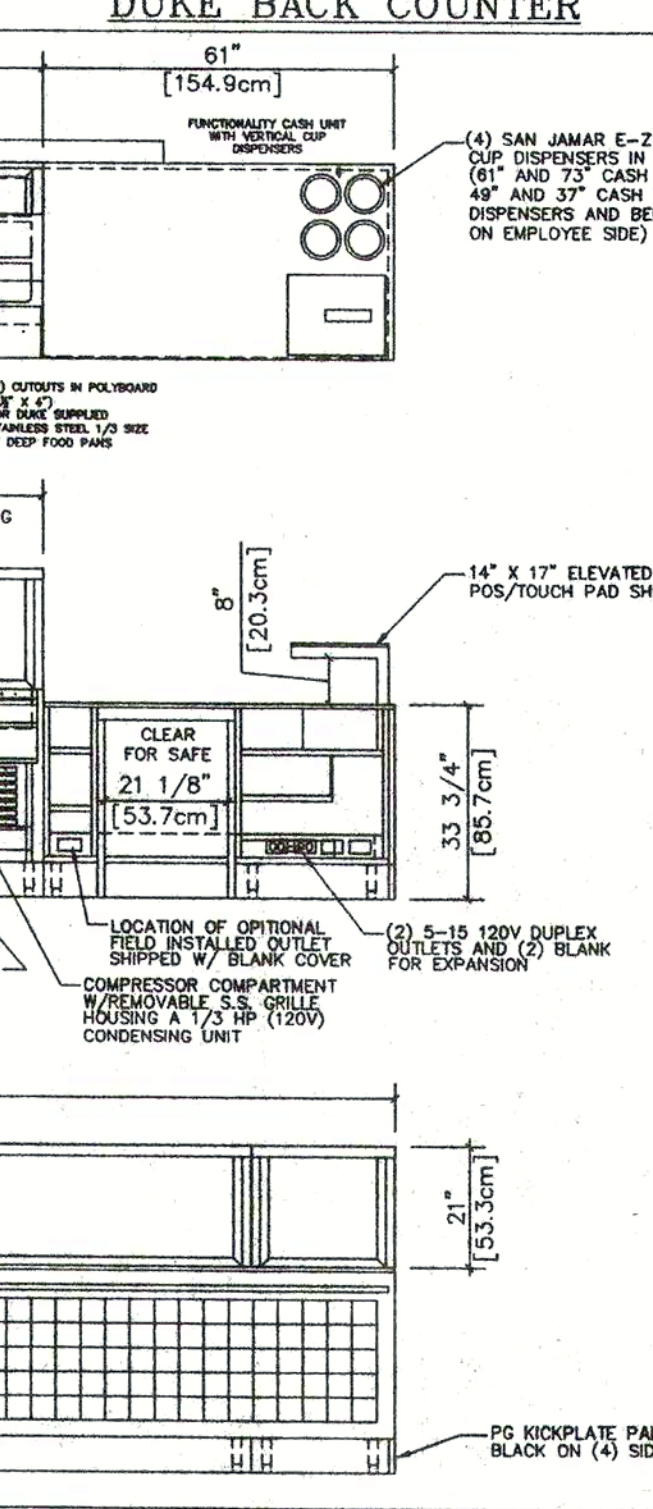
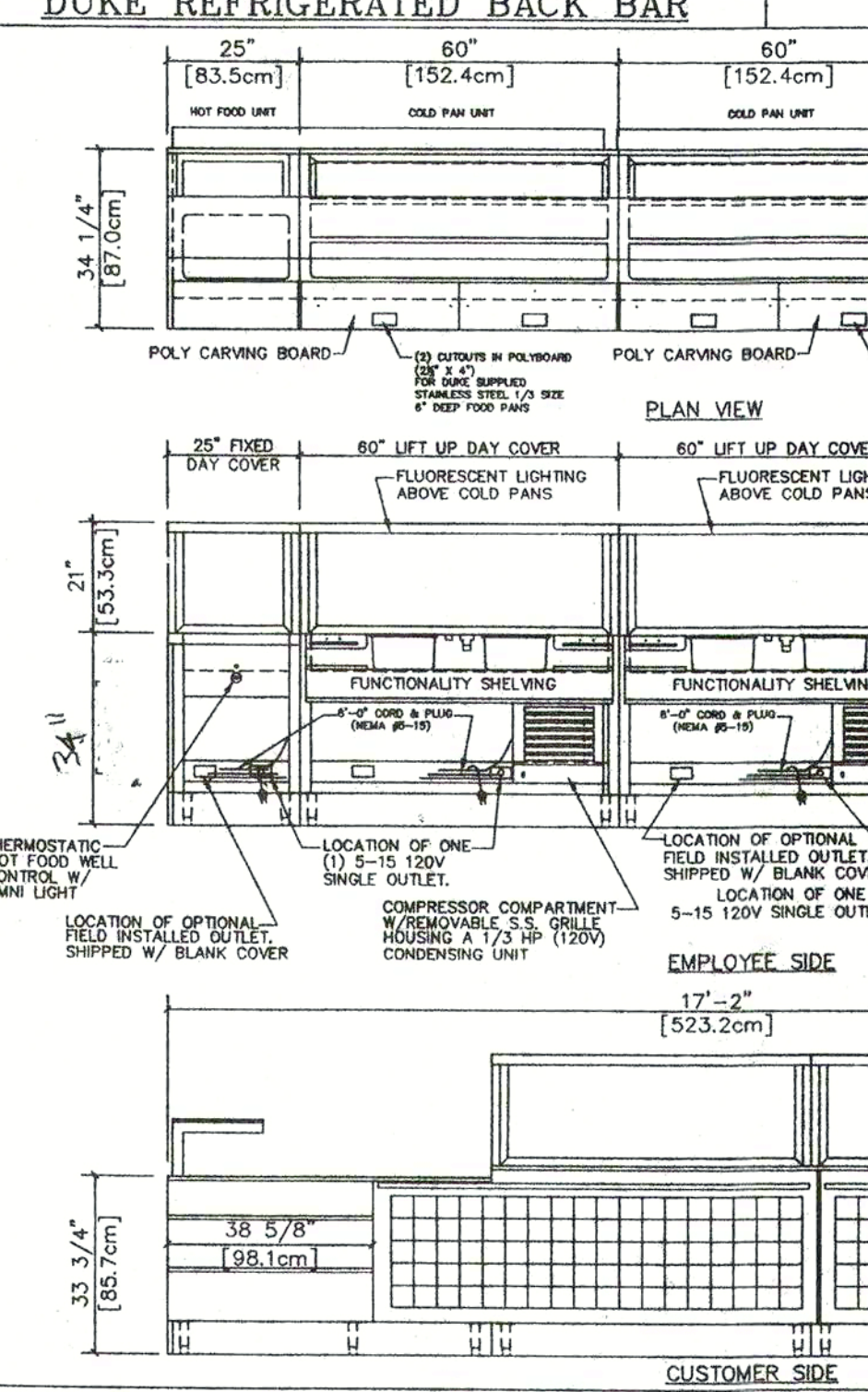
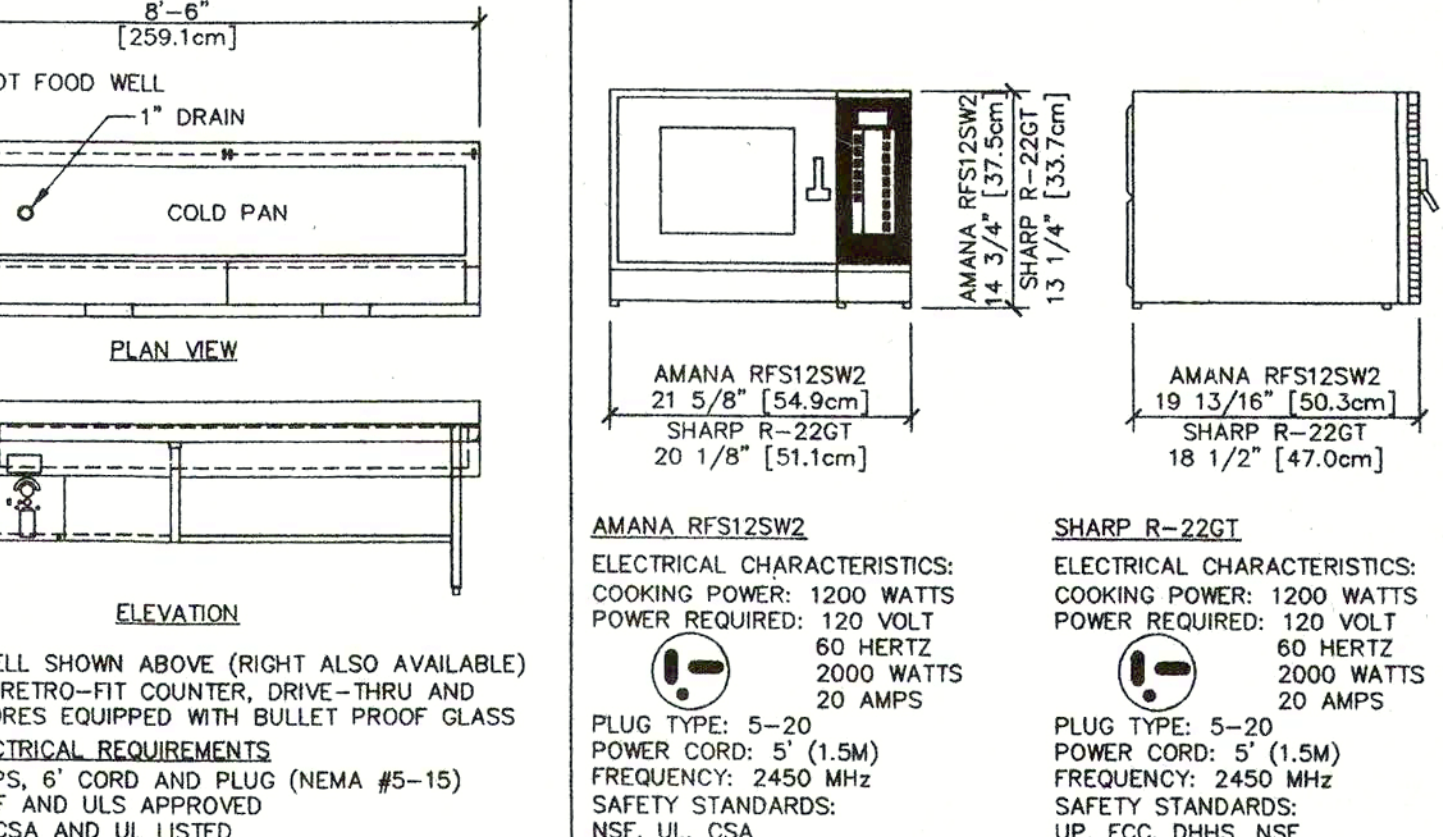
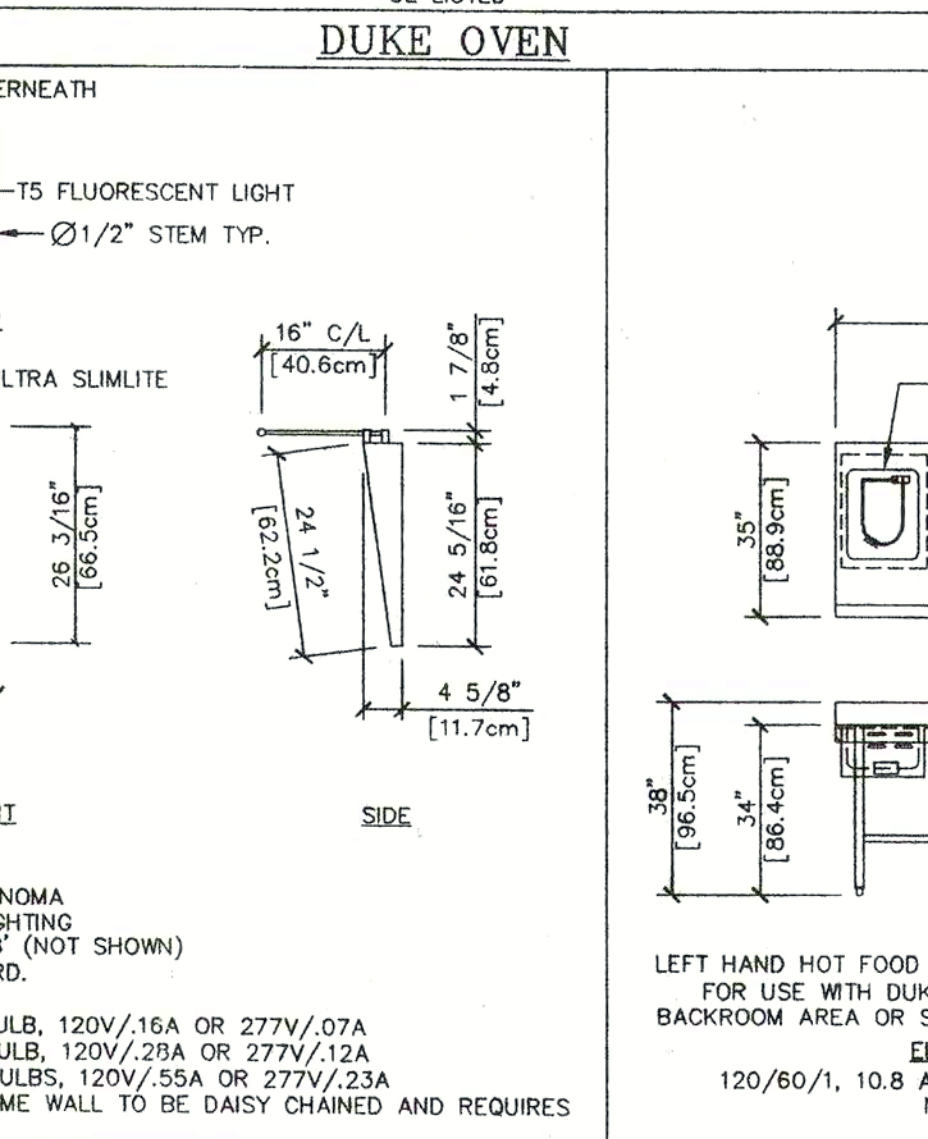
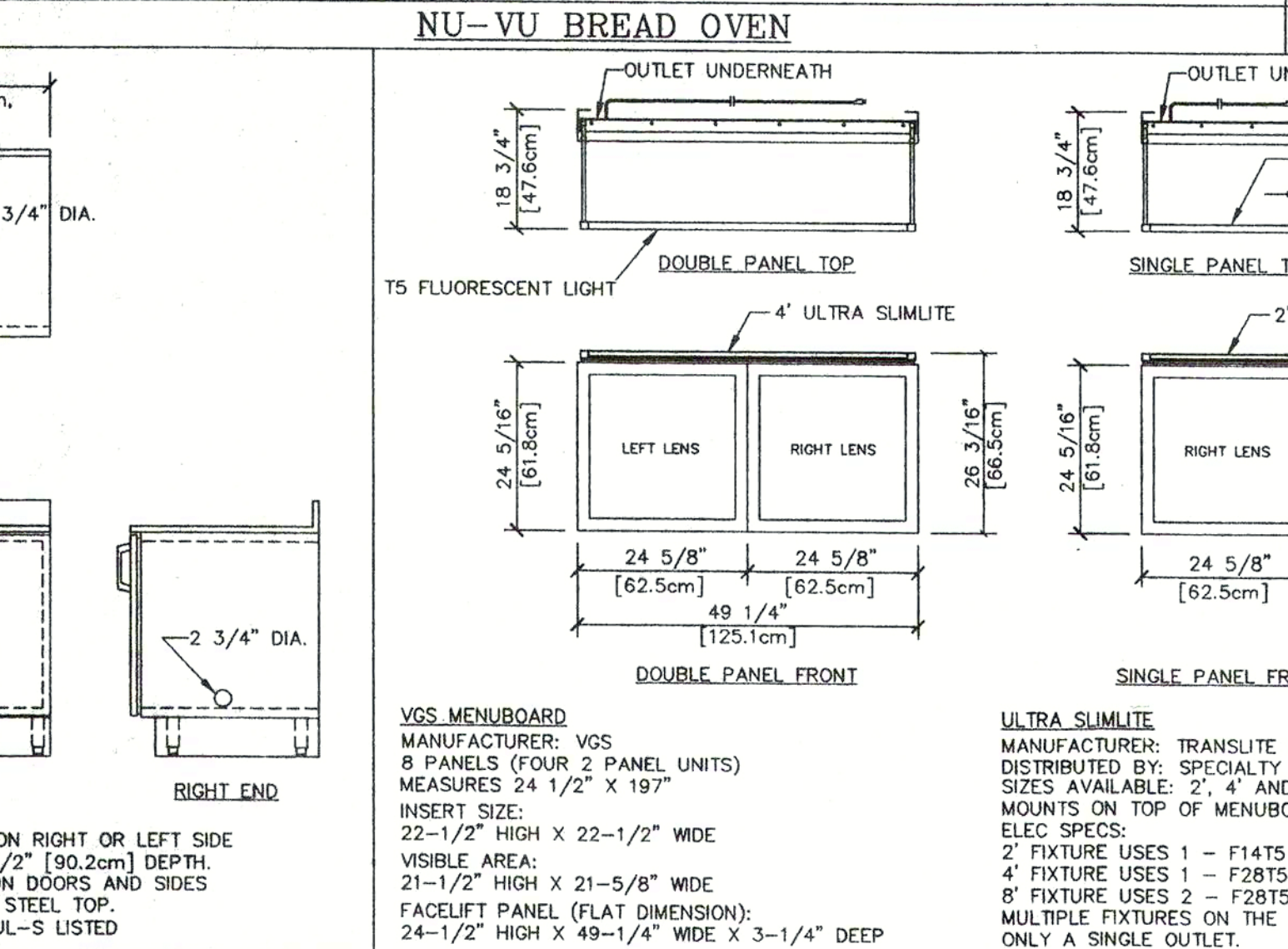
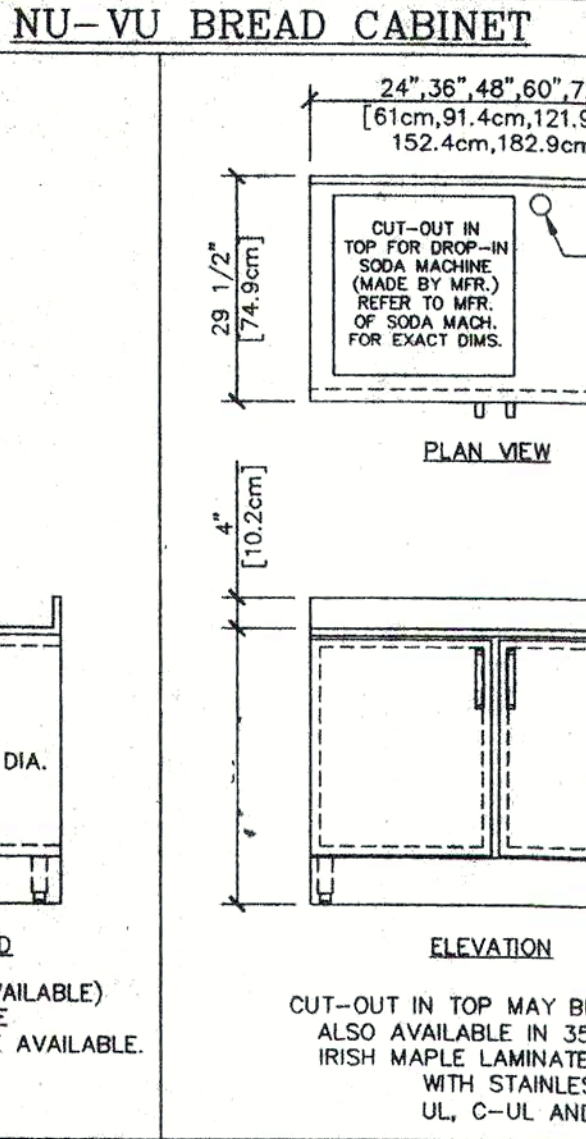
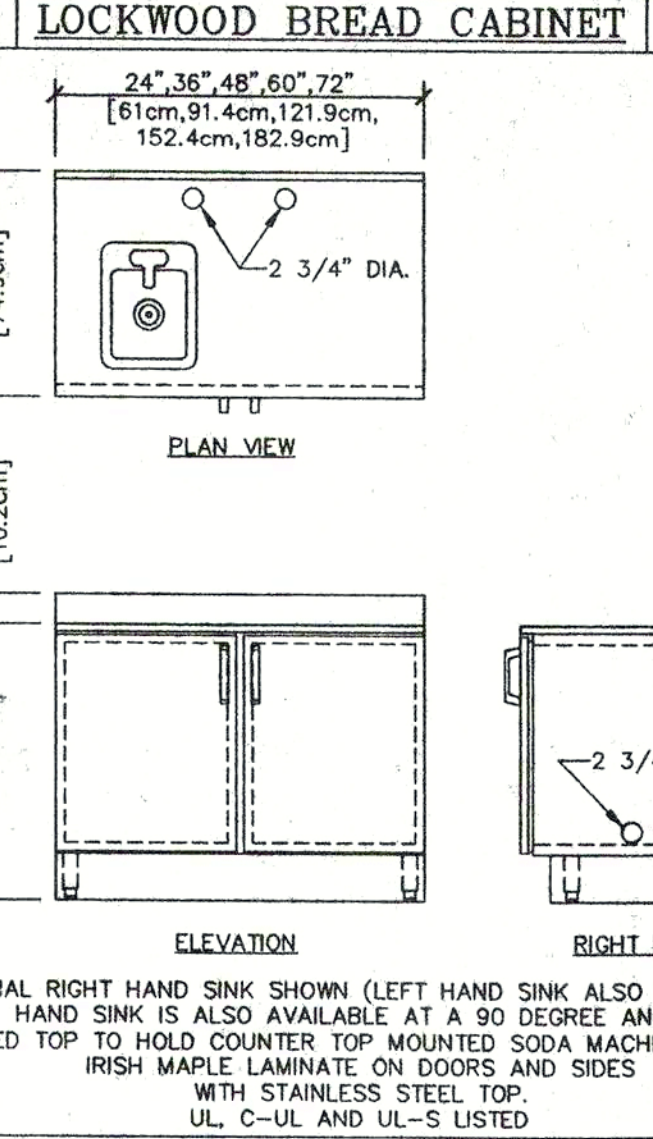
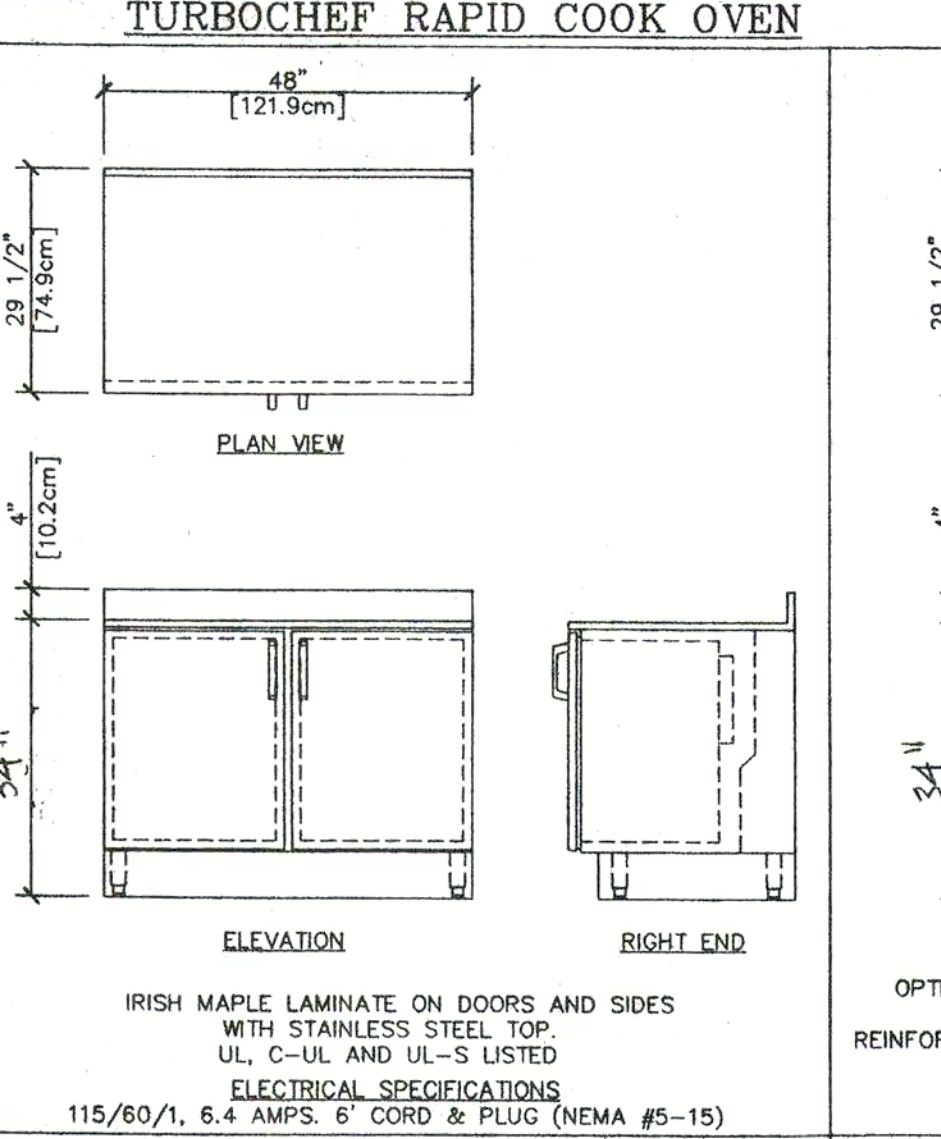
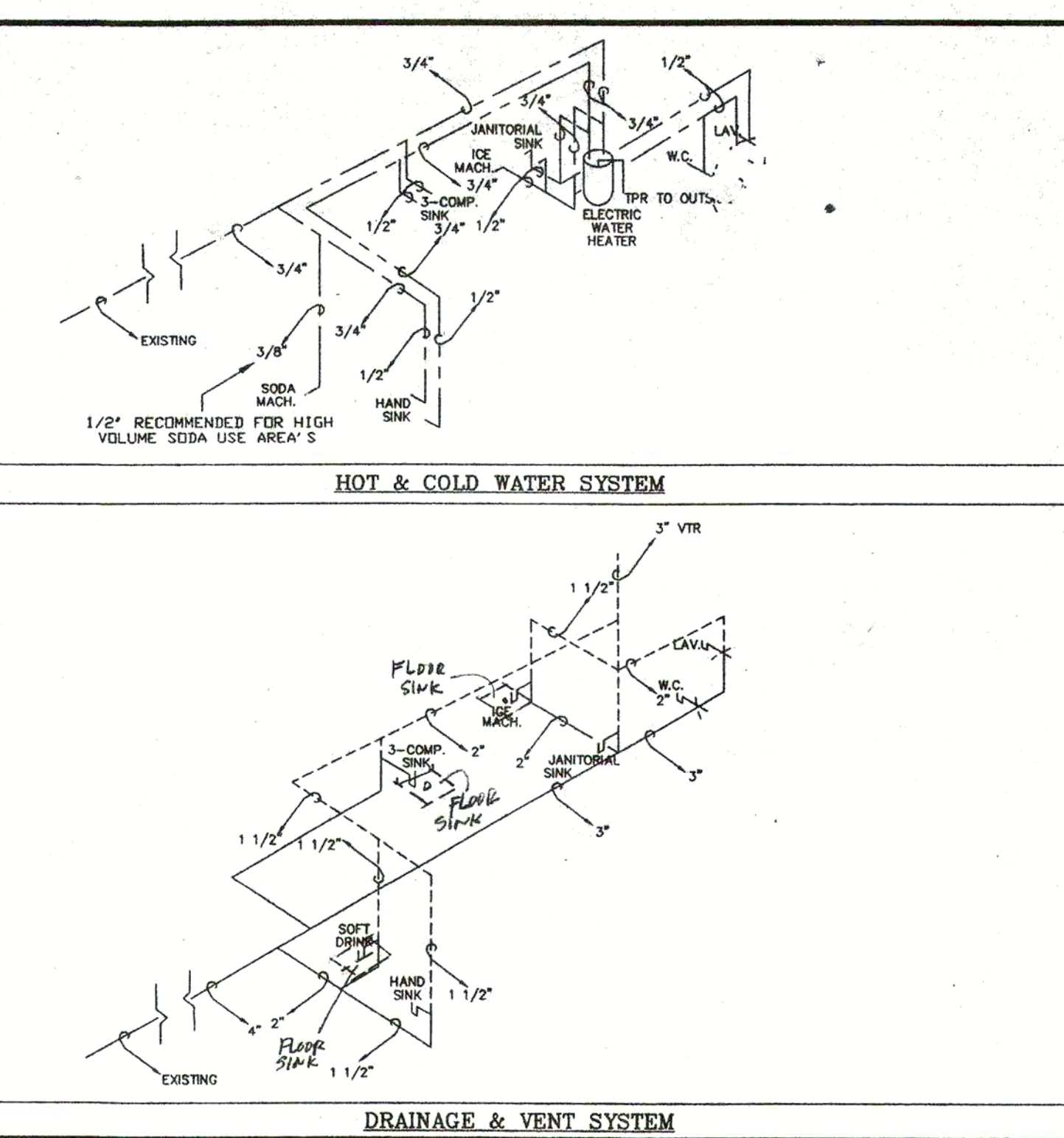
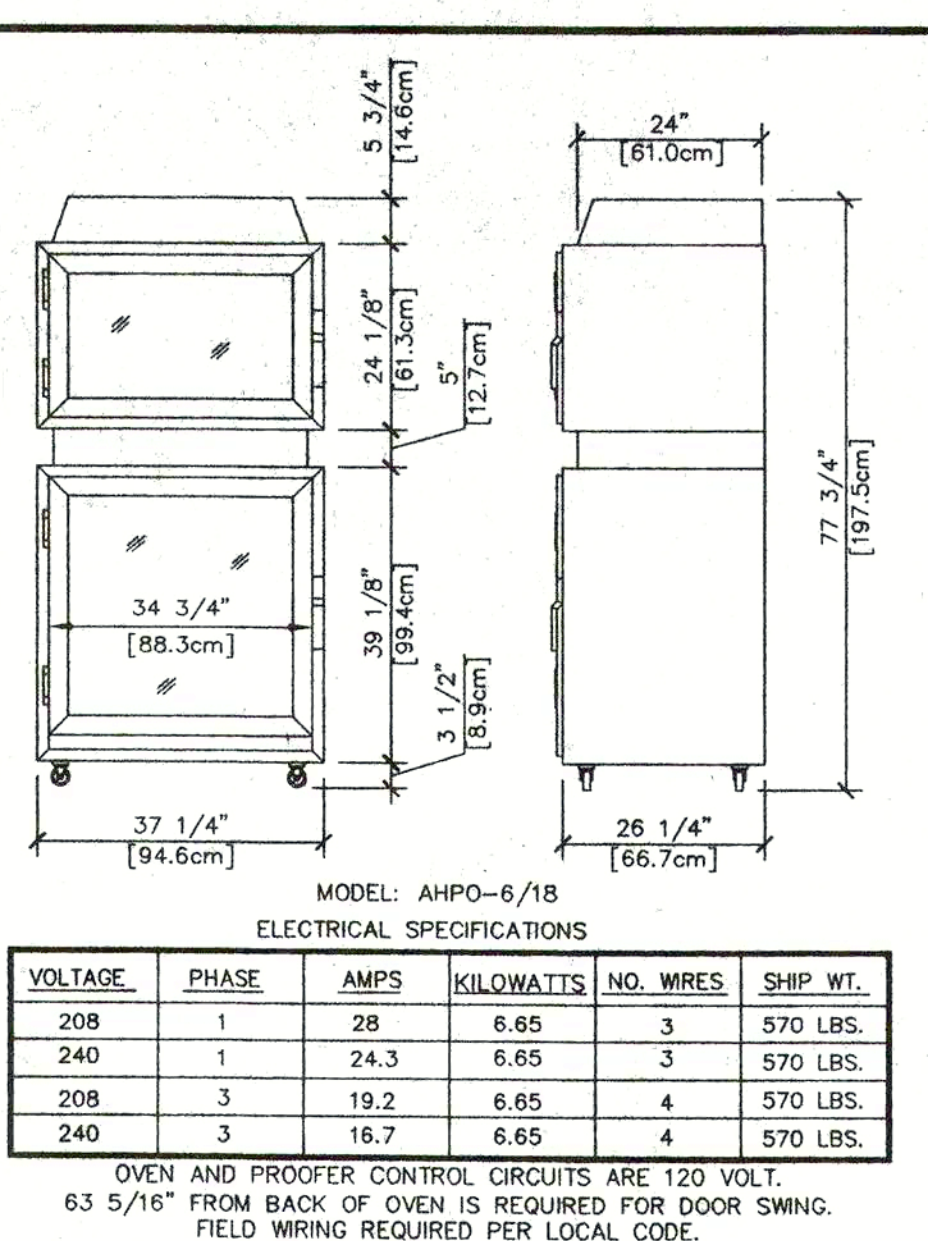
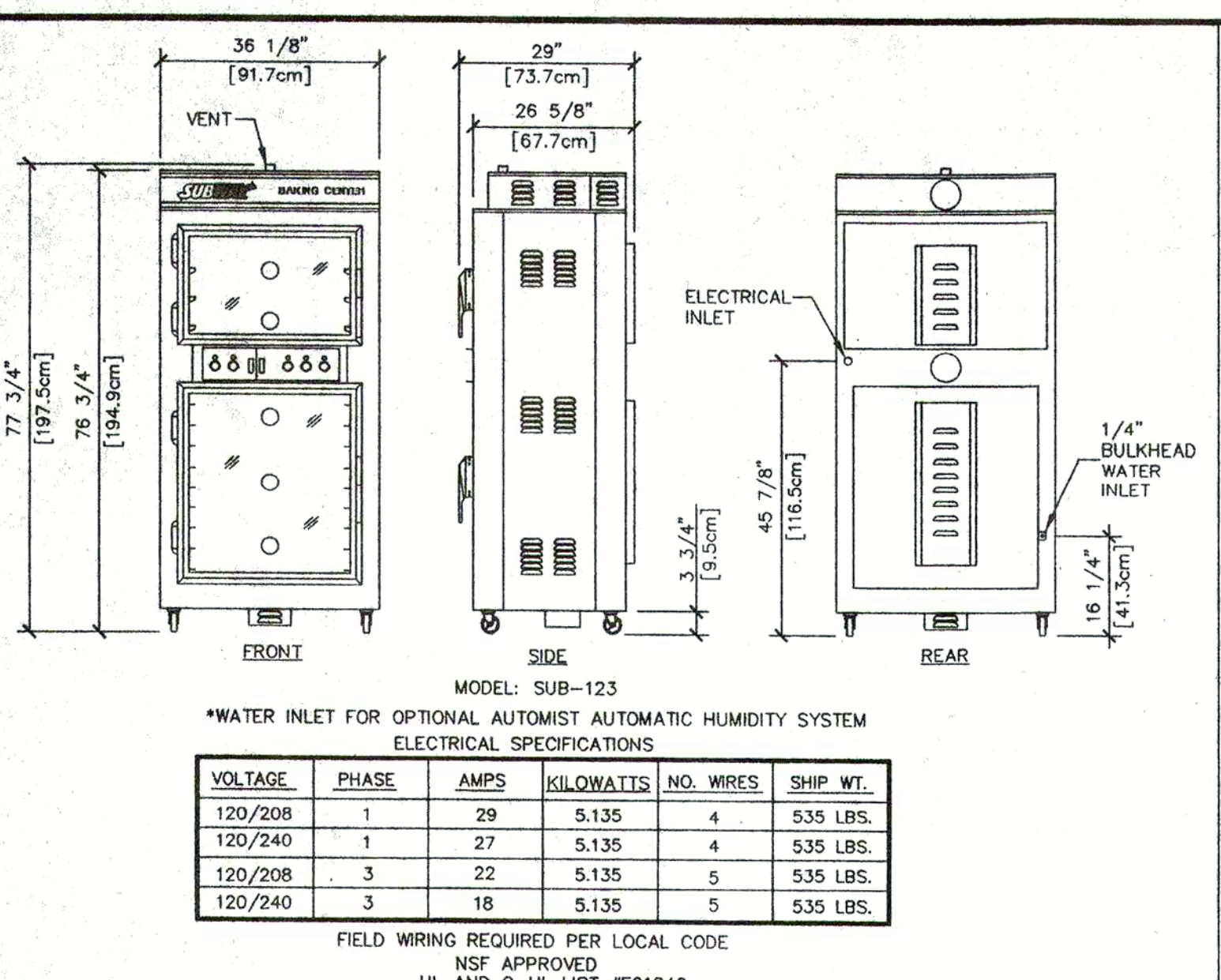
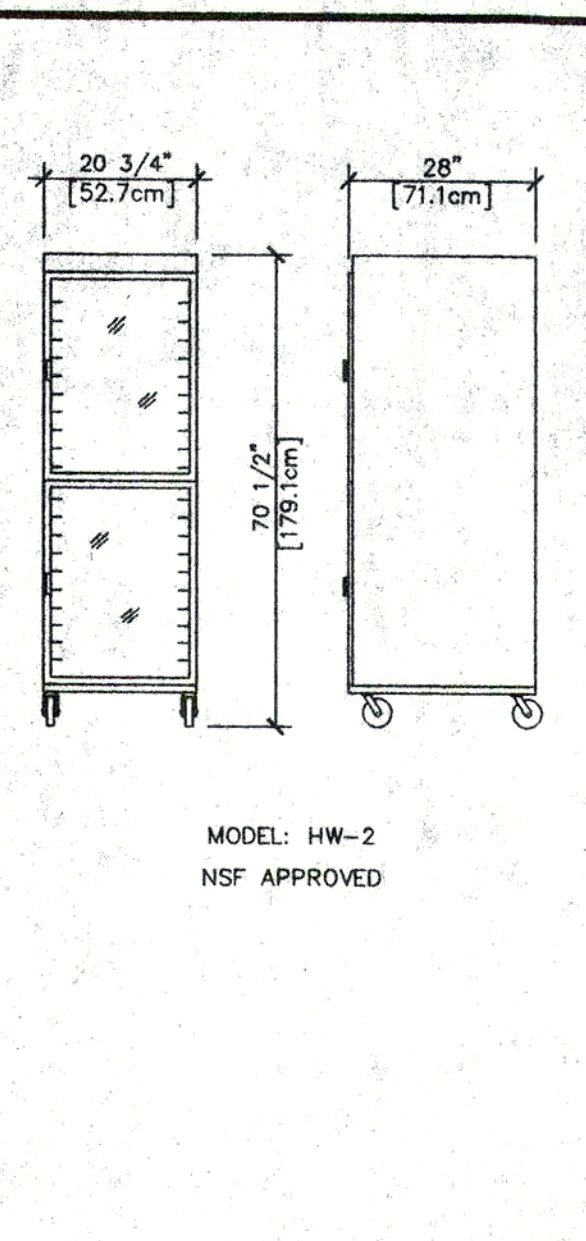
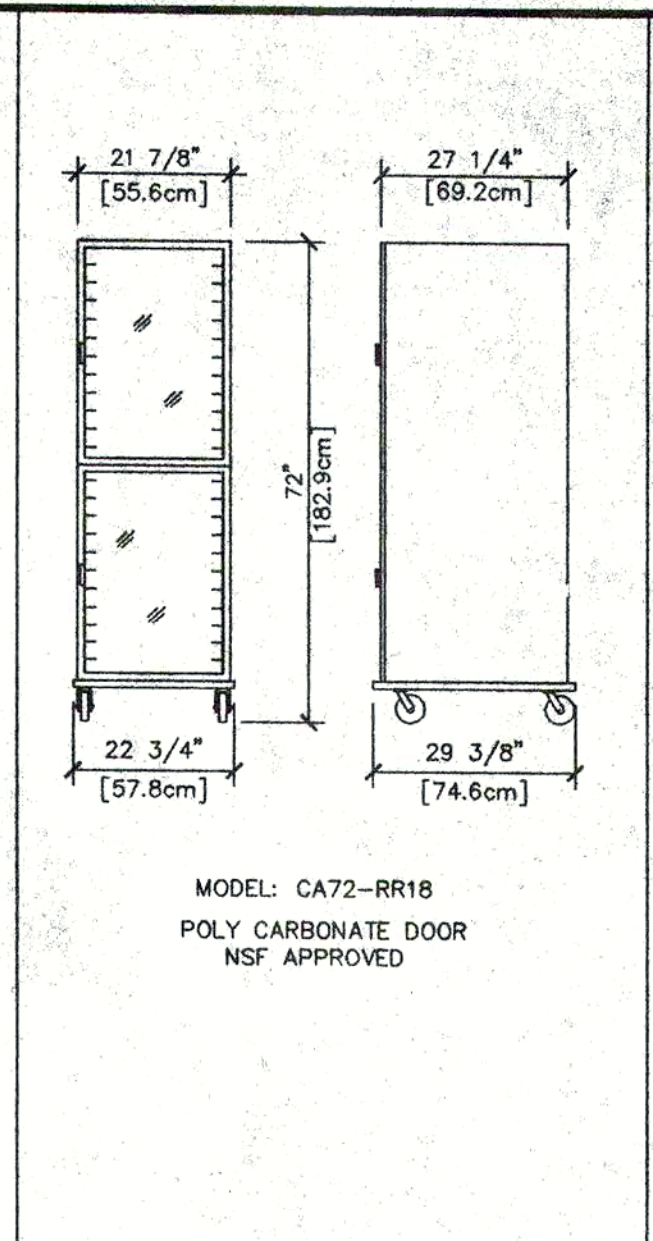
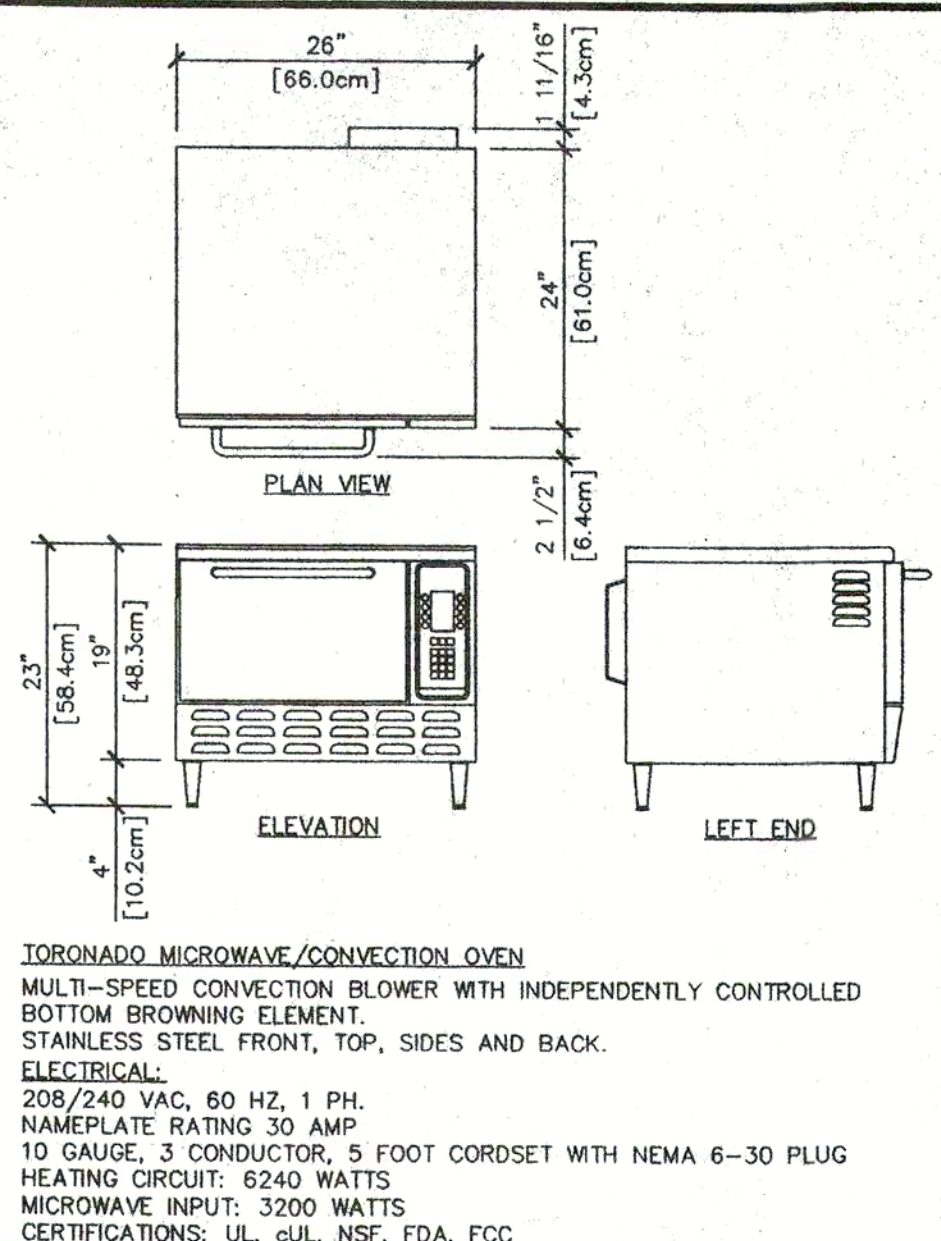
2001 © DOCTOR'S ASSOCIATES INC.

NOTE: THESE DRAWINGS REPRESENT TYPICAL EQUIPMENT PURCHASED THROUGH DOCTOR'S ASSOCIATES INC. AND DOES NOT REPRESENT ANY EQUIPMENT PURCHASED LOCALLY BY THE FRANCHISEE/OWNER. OWNERS OF STORES OUTSIDE THE UNITED STATES AND CANADA MAY NEED ALTERNATE ELECTRICAL REQUIREMENTS. CONTACT THE CONSTRUCTION DEPARTMENT OR THE MANUFACTURER FOR THE MODIFIED ELECTRICAL SPECIFICATIONS.

COOLER INSTALLATION ELEVATION - TUSCANY SHEET A-5

#	REVISIONS	DWN. BY	DATE	AP'VD
1	UPDATED ELEVATION DECOR ELEMENTS	DW	6/28/01	

L.A. CITY TEST APPROVAL # FOR NORLAKE COOLER & FREEZER WALK-INS # LARR 25197



**DUKE RETARDER CABINET**

**NOTE:**  
 THESE DRAWINGS REPRESENT TYPICAL EQUIPMENT PURCHASED THROUGH DOCTOR'S ASSOCIATES INC. AND DOES NOT REPRESENT ANY EQUIPMENT PURCHASED LOCALLY BY THE FRANCHISEE/OWNER. OWNERS OF STORES OUTSIDE THE UNITED STATES AND CANADA MAY NEED ALTERNATE ELECTRICAL REQUIREMENTS. CONTACT THE CONSTRUCTION DEPARTMENT OR THE MANUFACTURER FOR THE MODIFIED ELECTRICAL SPECIFICATIONS.

**DUKE SANDWICH UNIT**

**MANUFACTURER:**  
 ADVANCED DISPLAYS IN PLASTICS, INC.  
 COOKIE DISPLAY CASE ON TOP OF SUBWRAP/NAPKIN RISER  
 MADE OF 1/4" THICK CLEAR ACRYLIC  
 COOKIE DISPLAY CASE HAS 4 REMOVABLE SHELVES

**TIDEL SAFE**

**COOKIE DISPLAY CASE**

**CS 2820 CASH CONTROLLER**  
**BD 1512 QUICK DROP**

**C.S.S. / J. ROSS BOLES SAFES**

**WORLD HEADQUARTERS**  
 325 BIC DRIVE  
 MILFORD, CT 06460  
 (203) 877-4281  
 (800) 888-4848

**TYPICAL EQUIPMENT - TUSCANY SHEET A-6**

#	REVISIONS	DWN. BY	DATE	AP'VD
1	NU-VU OVEN	DF	11/1/02	DF
2	DUKE FRONT COUNTER	DF	3/31/03	DF
3	DUKE FRT. CTR. AND RETARDER CABINET	DF	4/14/03	DF
4	DUKE FRT. CTR. AND SAFES	DF	5/20/03	DF
5	DUKE FRT. CTR. TRI-CHANNEL	DF	6/23/03	DF
6	DUKE BEVERAGE CENTER	DF	8/26/03	DF
7	MENUBOARD WITH LIGHTING	DF	11/20/03	DF
8	DUKE FRT. CTR. AND BACK COUNTERS	DF	12/11/03	DF
9	BEVERAGE CENTER	DF	12/15/03	DF
10	BEVERAGE CENTER	DF	1/27/04	DF
11	FRONT COUNTER / RAPID COOK OVEN	DF	3/25/04	DF
12	DUKE FRONT COUNTER / NEW SAFE	DF	4/28/04	DF
13	CHANGE MICROWAVE SPECS.	DF	11/3/04	DF

