

236 W 30th Street

Between 7th & 8th Avenue

Suite 701 - 2,800 SF

- Office/Conference Rooms and Large Open Area
- 2 Private Restrooms and Wet Pantry
- Operable Windows On All Three Sides
- Excellent Natural Light
- 11' Ceilings + Polished Concrete Floors
- 24/7 Tenant Controlled AC
- 200 amps 3 phase power
- Furnished

BUILDING FEATURES

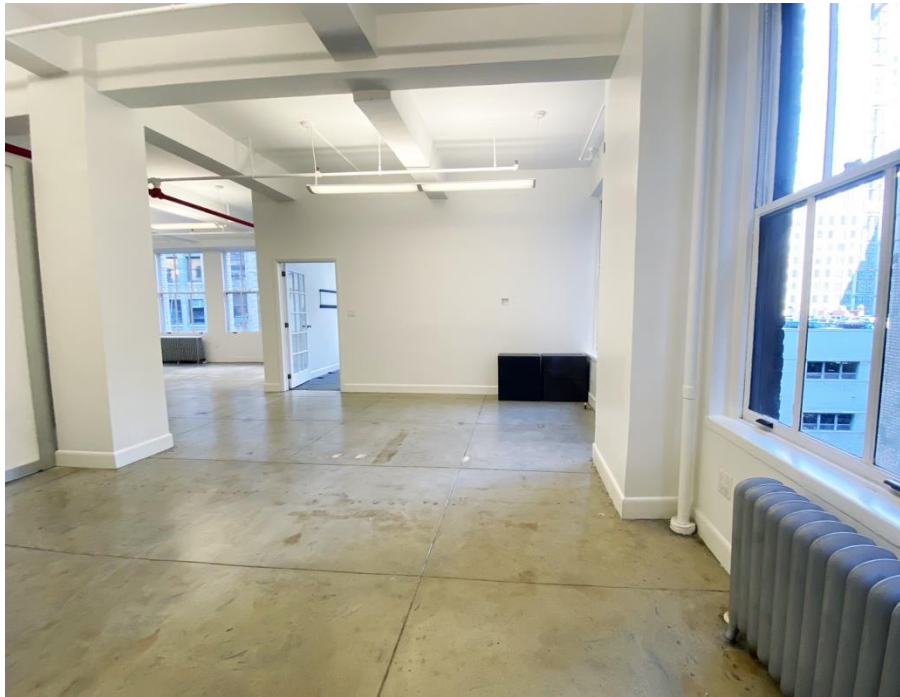
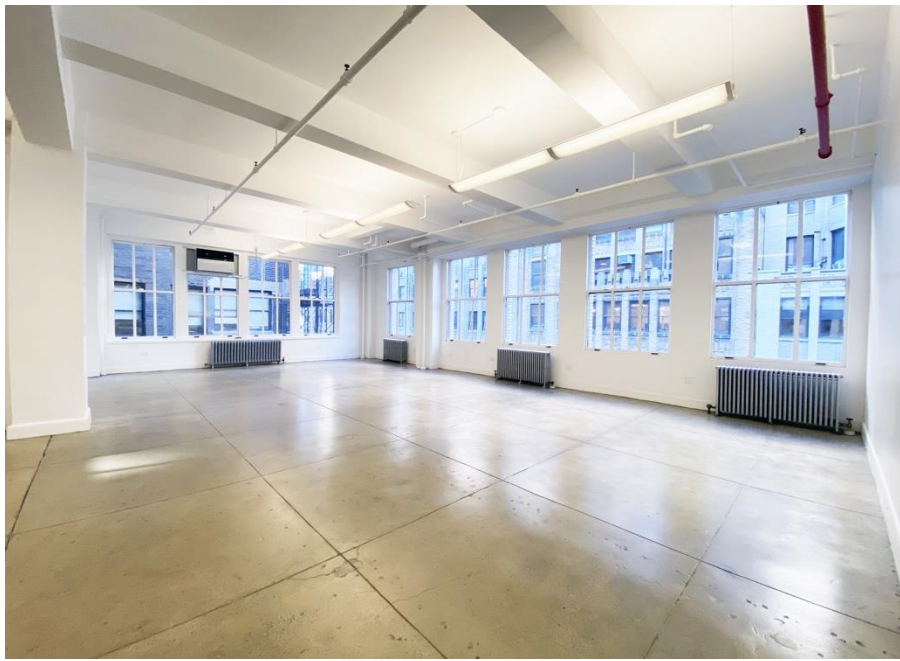
- [New Landscaped Roof Deck with Wi-Fi](#)
- 3 Elevators (Two Passenger and Freight Elevator)
- Elegant Marble Lobby
- 24 / 7 Access
- Advanced Access Control System
- On-site Management and Well Maintained Building
- Dedicated On-site Superintendent and Building Personal
- Heat Included
- Wired with Verizon FIOS, Pilot Fiber, LightPath and Lumen
- USPS, UPS and FedEx Office within a block
- Near Parking and Major Transit Hubs:

Penn Station, Moynihan Station, Herald Square



WALK SCORE ® - TRANSIT SCORE ® - RATED 100





Possible layout with glass rooms



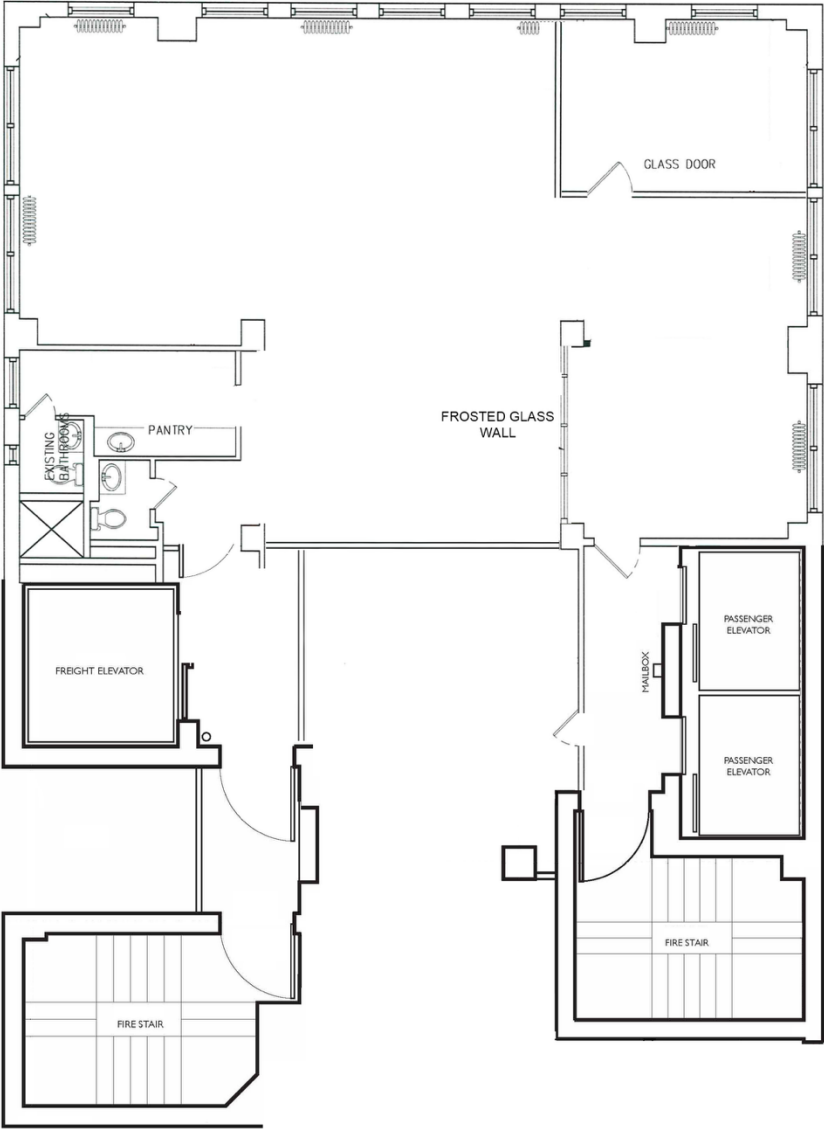
Note: This picture and the following pictures are being offered for layout and design purposes only.



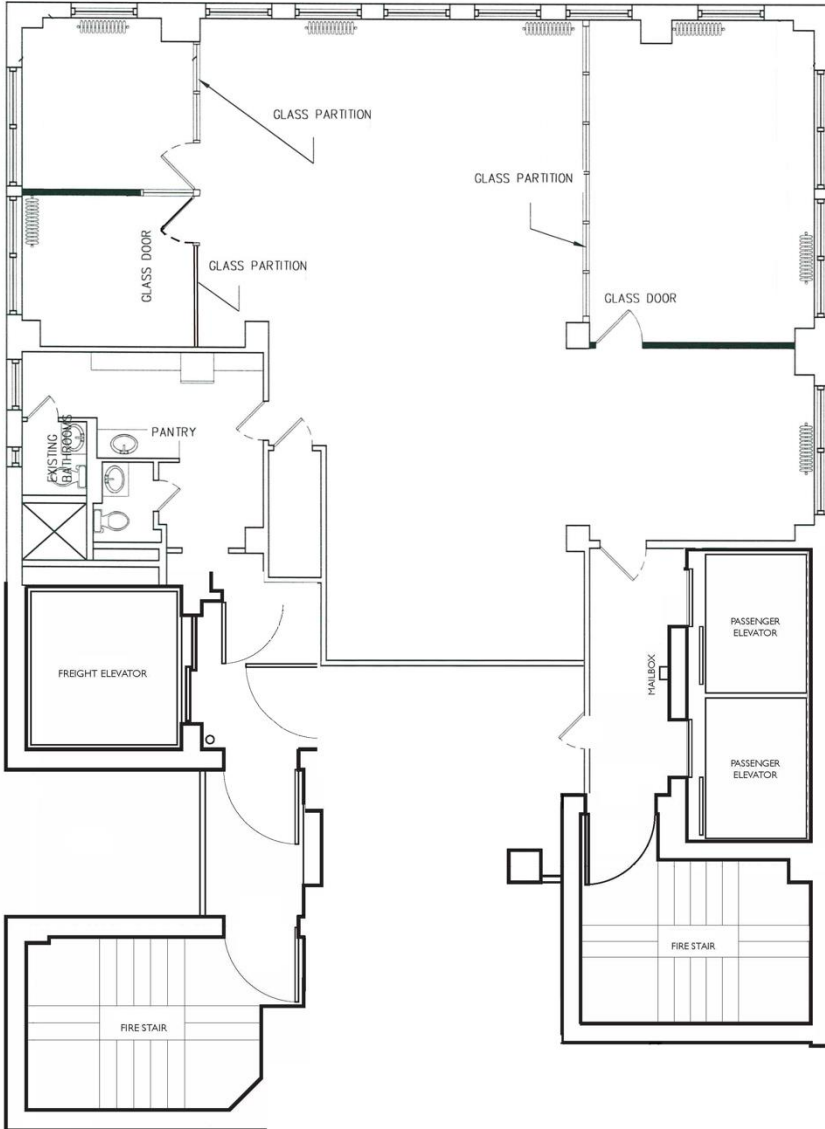


30th Street

Current Layout



Optional Layout



LANDSCAPED ROOFDECK

New Amenity

Sweeping City Views

Wi-Fi



