

# FOR LEASE

## ±6,990 Sq. Ft. Freestanding Building

1908 N. Enterprise Street, Orange, CA 92865



### Property Details

- ±6,990 Sq. Ft. Freestanding Building
- Highly Improved Office
- ±300 Sq. Ft. of Warehouse
- FENCED YARD
- 28 Parking Spaces
- Fire Sprinklers
- Ground Level Loading Door
- Mezzanine File Storage (bonus sq. ft.)
- Emergency Generator (server room)
- Excellent Access to the Orange (57), Santa Ana (5), Costa Mesa (55), Riverside (91) and Garden Grove (22) Freeways

**Hayden H. Socci, SIOR, CCIM**

Senior Vice President | Partner

714.935.2379

hsocci@voitco.com

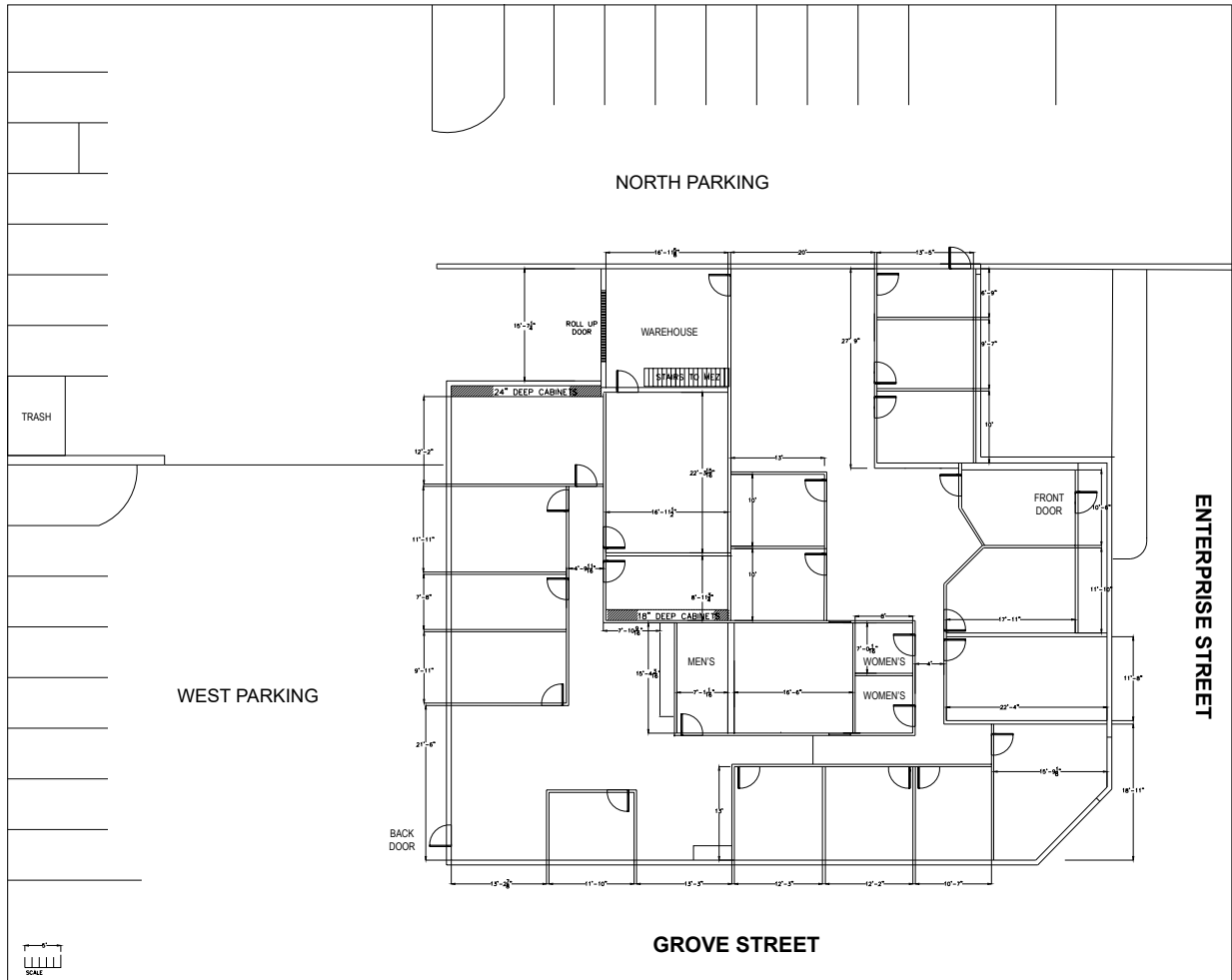
Lic. #01705038

2400 E. Katella Avenue, Suite 750, Anaheim, CA 92806

714.978.7880 • 714.978.9431 Fax • Lic #01991785 | [www.VoitCo.com](http://www.VoitCo.com)

# Voit

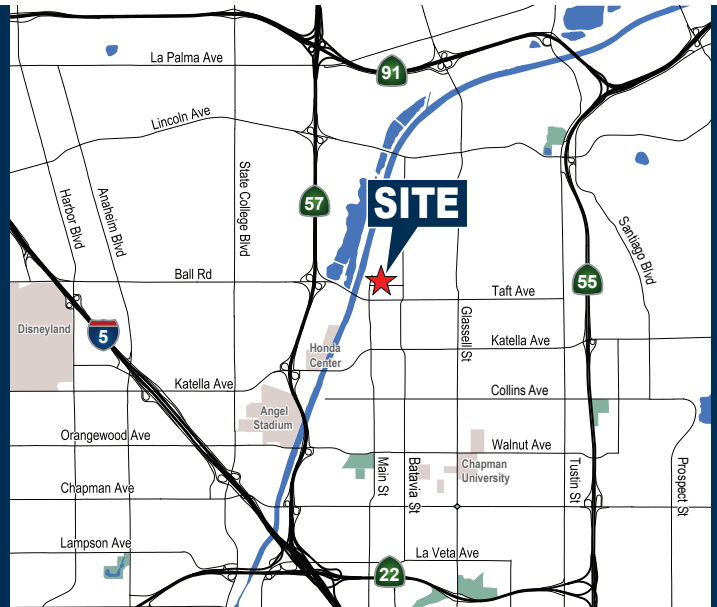
REAL ESTATE SERVICES



\*Please note floor plan may not be to scale

# ±6,990 Sq. Ft. Freestanding Building

1908 N. Enterprise Street  
Orange, CA 92865



**Hayden H. Socci, SIOR, CCIM**  
Senior Vice President | Partner

714.935.2379  
hsocci@voitco.com  
Lic. #01705038

2400 E. Katella Avenue, Suite 750, Anaheim, CA 92806  
714.978.7880 • 714.978.9431 Fax • Lic #01991785 | [www.VoitCo.com](http://www.VoitCo.com)

Licensed as Real Estate Salespersons by the DRE. The information contained herein has been obtained from sources we deem reliable. While we have no reason to doubt its accuracy, we do not guarantee it. ©2026 Voit Real Estate Services, Inc. All Rights Reserved.

**Voit**  
REAL ESTATE SERVICES