



OFFICE SPACE FOR LEASE

361 SOUTHPORT CIRCLE

VIRGINIA BEACH, VA 23452



361 SOUTHPORT CIRCLE

VIRGINIA BEACH, VA 23452

PROPERTY OVERVIEW



OFFERING SUMMARY

Available SF: 1,360 - 7,141 SF

Lease Rate: \$21.00 SF/yr (Net Electric + Janitorial)

Building Size: 16,000 SF

AVAILABLE SPACES **SF**

2nd Floor 1,360 - 7,141 SF
(Subdivisible)

PROPERTY OVERVIEW

Located in the Central Business District of Virginia Beach. Easy access to the Virginia Beach/Norfolk Expressway (I-264), and in close proximity to The Town Center of Virginia Beach.

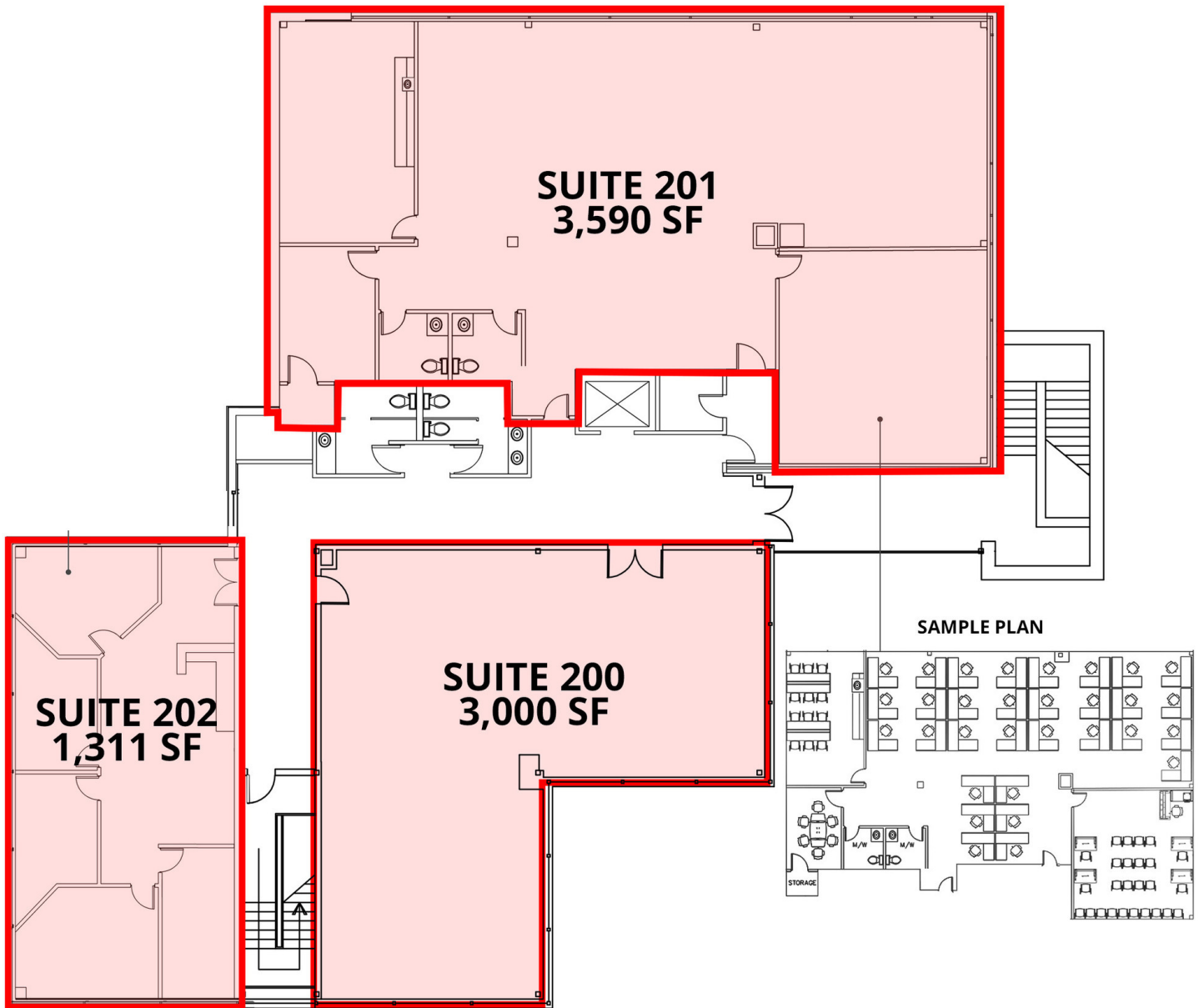
PROPERTY HIGHLIGHTS

- Building Signage available
- Ample on-site, surface parking of approximately 4:1,000 SF plus on street parking
- Restroom and Kitchen in suite
- Ideal for Medical Tenants
- Mag Lock security

361 SOUTHPORT CIRCLE

VIRGINIA BEACH, VA 23452

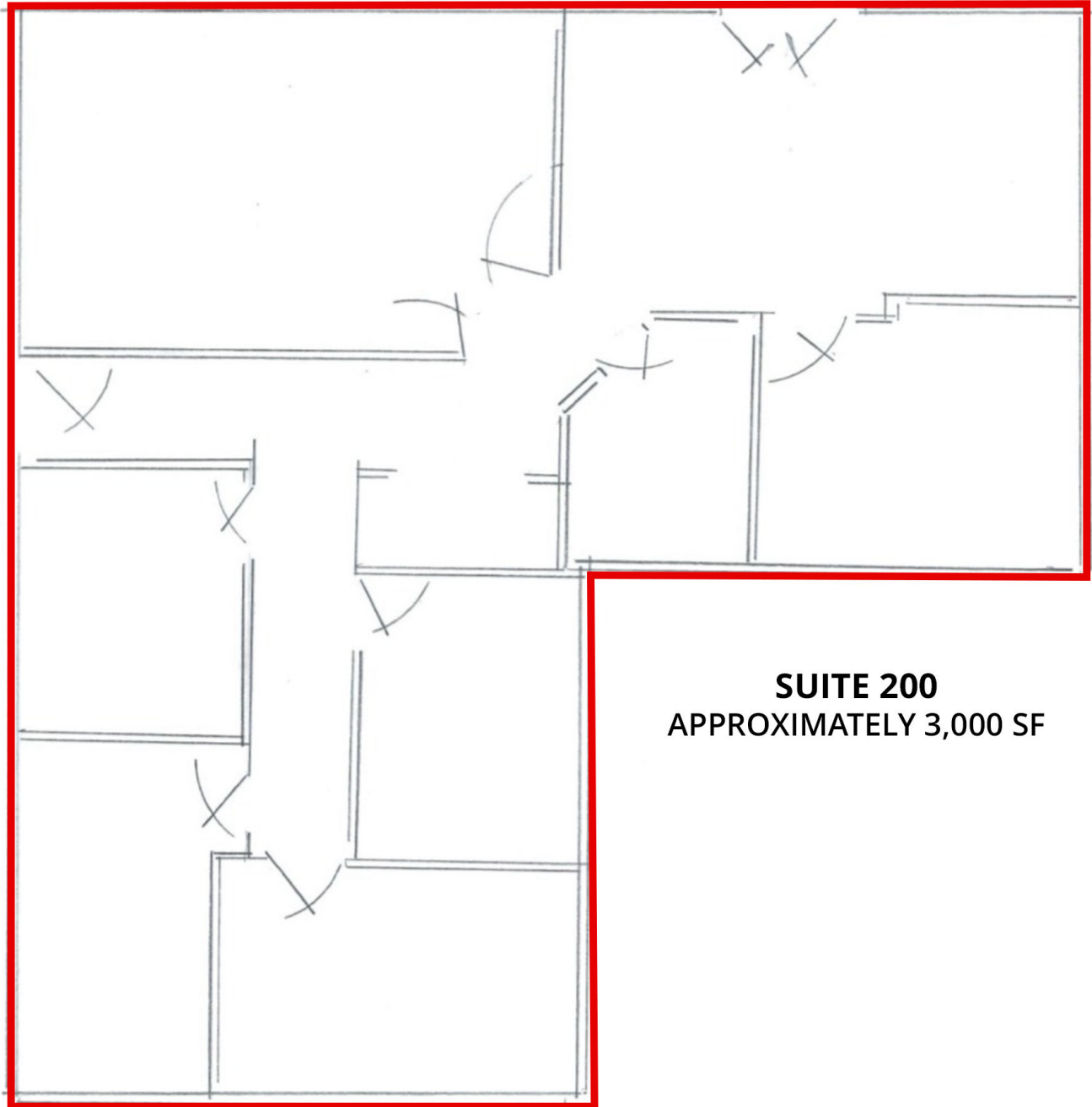
SECOND FLOOR | 1,360 - 7,141 SF



361 SOUTHPORT CIRCLE

VIRGINIA BEACH, VA 23452

SUITE 200 PLAN | 3,000 SF

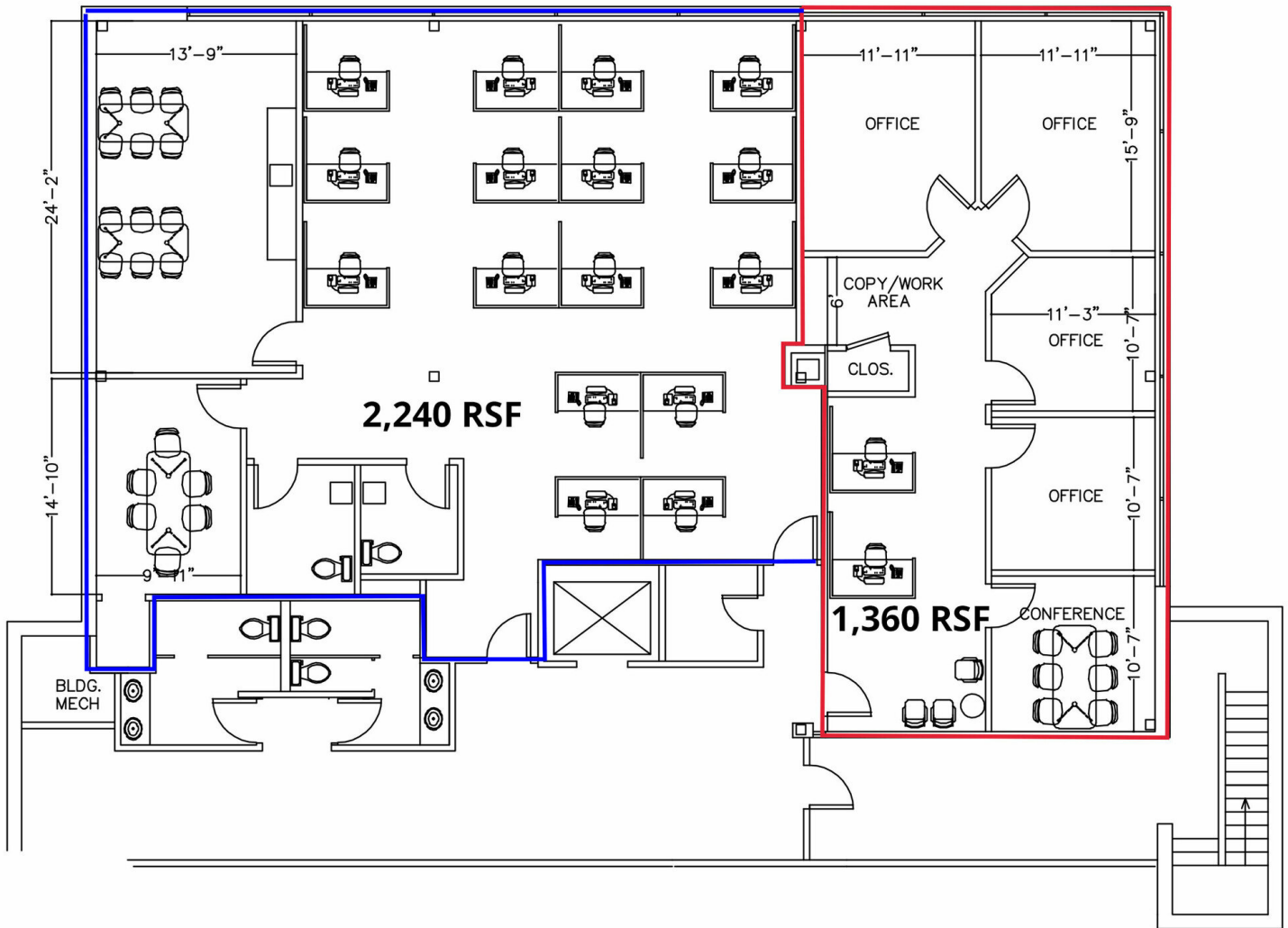


SUITE 200
APPROXIMATELY 3,000 SF

361 SOUTHPORT CIRCLE

VIRGINIA BEACH, VA 23452

SUITE 201 SAMPLE PLAN

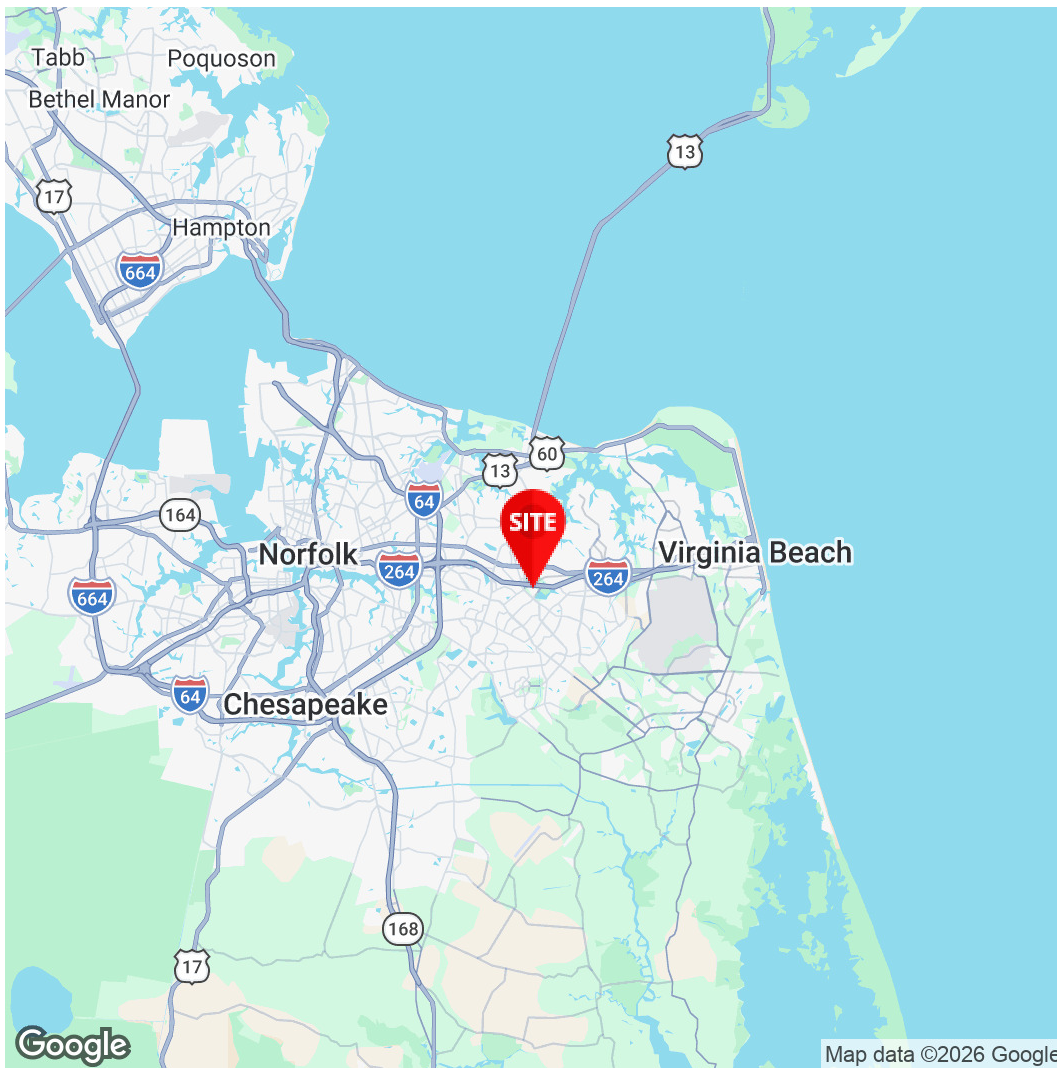


361 SOUTHPORT CIRCLE

VIRGINIA BEACH, VA 23452

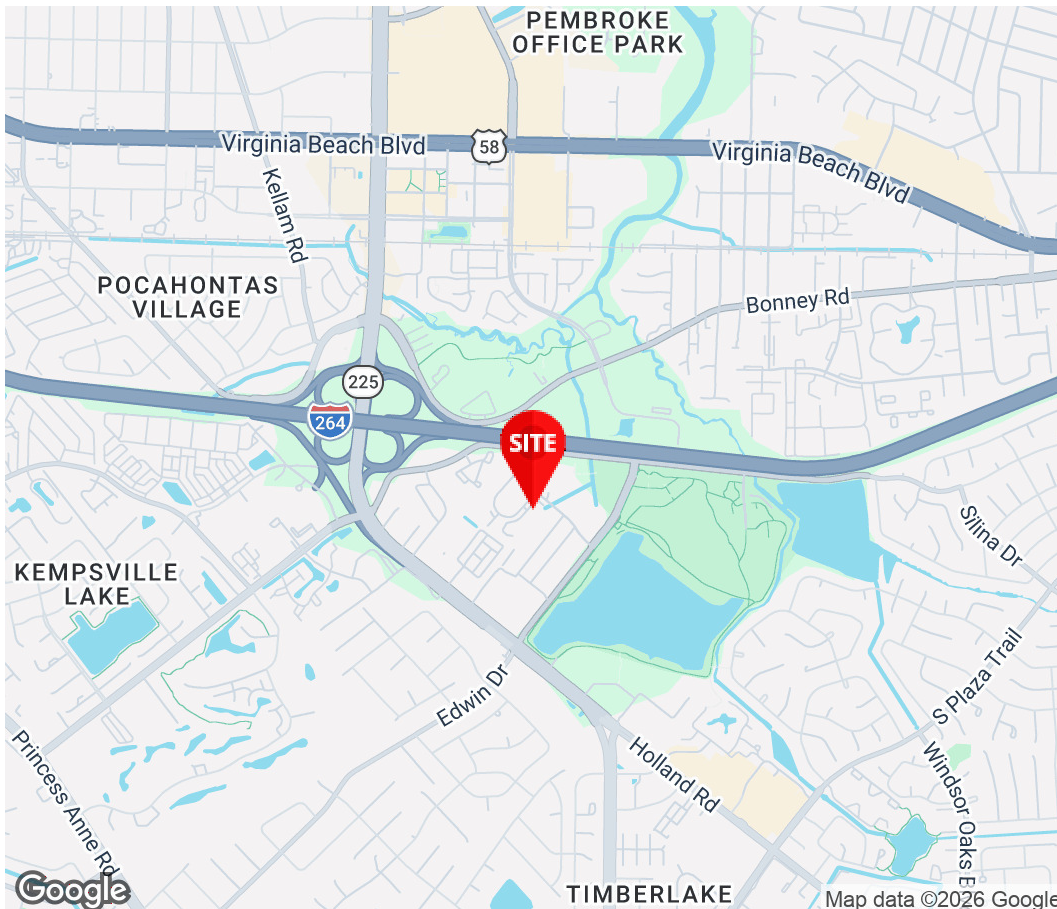
ADDITIONAL PHOTOS





Elizabeth C. Paasch
 AVP, Office Leasing And
 Sales
 757.333.4322
 Epaasch@Divaris.Com

Ashley Beck
 Senior Associate
 757.333.4302
 Ashley.Beck@Divaris.Com



The information contained herein should be considered confidential and remains the sole property of Divaris Real Estate, Inc. at all times. Although every effort has been made to ensure accuracy, no liability will be accepted for any errors or omissions. Disclosure of any information contained herein is prohibited except with the express written permission of Divaris Real Estate, Inc.