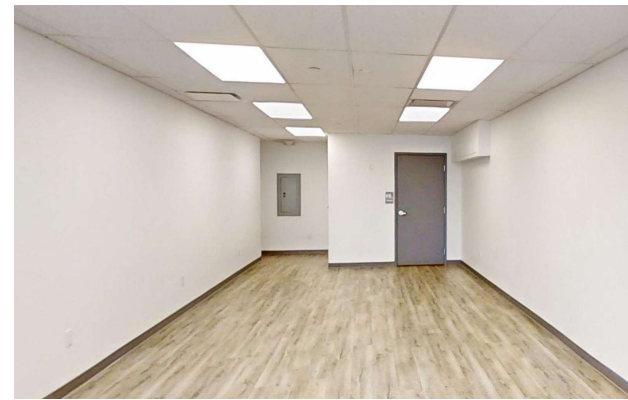
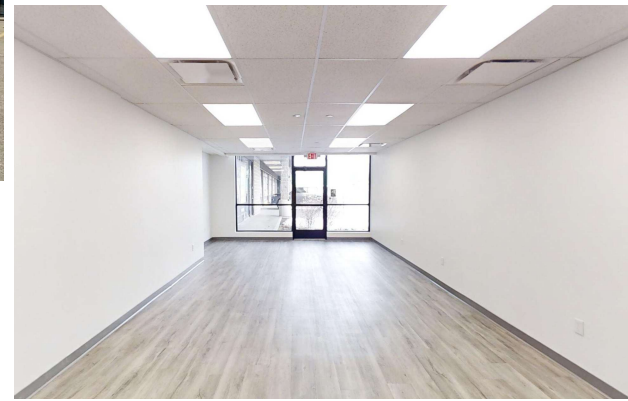


FOR LEASE

# 609± SF MIXED-USE SPACE

Kearsarge Plaza | 5146 Peach Street | Erie, PA 16509



**OFFERED AT:**  
\$22.00 SF/YR  
(NNN)

## PROPERTY HIGHLIGHTS

- 609± SF Mixed-Use Space For Lease
- Open Floor Plan With ADA Restroom
- Floor Plan Available
- Completely Renovated With Synthetic Wood Flooring, Drop Ceiling, Newer Lighting & HVAC
- Excellent Visibility With 26,000 Average Daily Traffic (PennDOT AADT 2023 Count Year)
- At Signalized Intersection Offering Easy Ingress/Egress
- Abundant Parking With 75 Spaces In Private Lot
- Join Domino's Pizza, Associated Clinical Laboratories, Peace, Love & Little Donuts, Fancy Nails, Erie Pack & Ship, Kearsarge Laundry & W. D. Hammerlee Dentistry At Kearsarge Plaza
- Offered At \$22.00/SF/YR + NNN + Utilities
- NNN Estimated At \$5.53/SF/YR (2024)
- Tenant Pays Approximately \$1,397/Month + Utilities
- Additional Configurations Available Up To 6,662± SF
- Tour Online:  
<https://my.matterport.com/show/?m=skvcU4mHo1N>

©2025 SBRE - Sherry Bauer Real Estate. The information above has been obtained from sources believed reliable. While we do not doubt its accuracy, we have not verified it and make no guarantee, warranty or representation about it. It is your responsibility to independently confirm its accuracy and completeness.

## FOR MORE INFORMATION PLEASE CONTACT

**Sherry Bauer**  
Broker

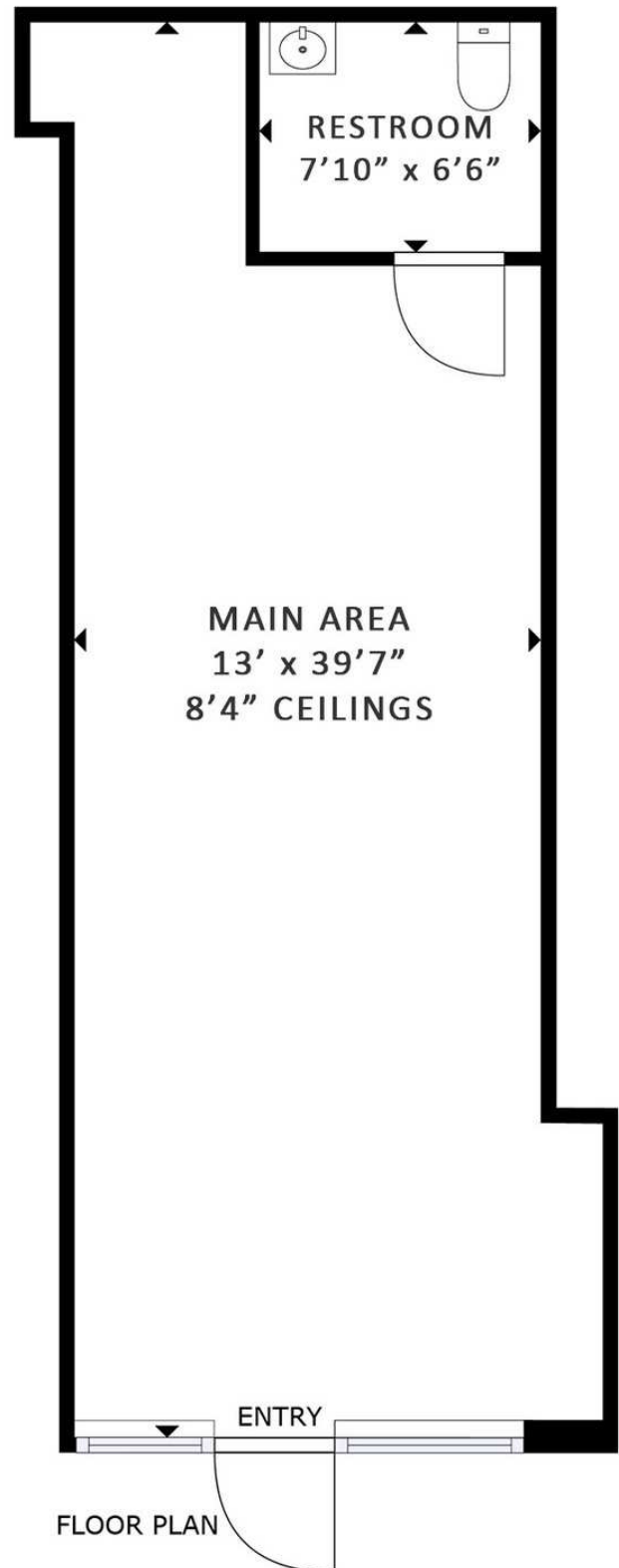
O. 814.453.2000 x101 \ C. 814.460.2000  
sbauer@sherrybauerrealestate.com

# SBRE

609± SF MIXED-USE SPACE

For Lease | Kearsarge Plaza | 5146 Peach Street | Erie, PA 16509

360° VIRTUAL TOUR



609± SF Gross Rentable Area  
534± SF Gross Internal Area

Note: Drawing may not be to scale. All sizes & dimensions are approximate. Measurement accuracy is within 2% of reality.

FOR MORE INFORMATION PLEASE CONTACT

**Sherry Bauer**

Broker

O. 814.453.2000 x101 \ C. 814.460.2000

sbauer@sherrybauerrealestate.com

1315 Peninsula Drive, Suite 2, Erie, PA 16505

P. 814.453.2000

F. 814.453.2001

www.sherrybauerrealestate.com